

# Wholesale Colocation



4200 W 40<sup>th</sup> – Chicago, IL

**Jonathan Larsen**

*Principal, Managing Director & U.S. Executive Committee*

+1 213 471 1069

[jonathan.larsen@avisonyoung.com](mailto:jonathan.larsen@avisonyoung.com)

CA Lic.#01008099

**Chandler Larsen**

*Principal*

+1 213 471 7009

[chandler.larsen@avisonyoung.com](mailto:chandler.larsen@avisonyoung.com)

CA Lic.#01945605

**Zeke Rowan**

*Principal*

+1 213 471 7009

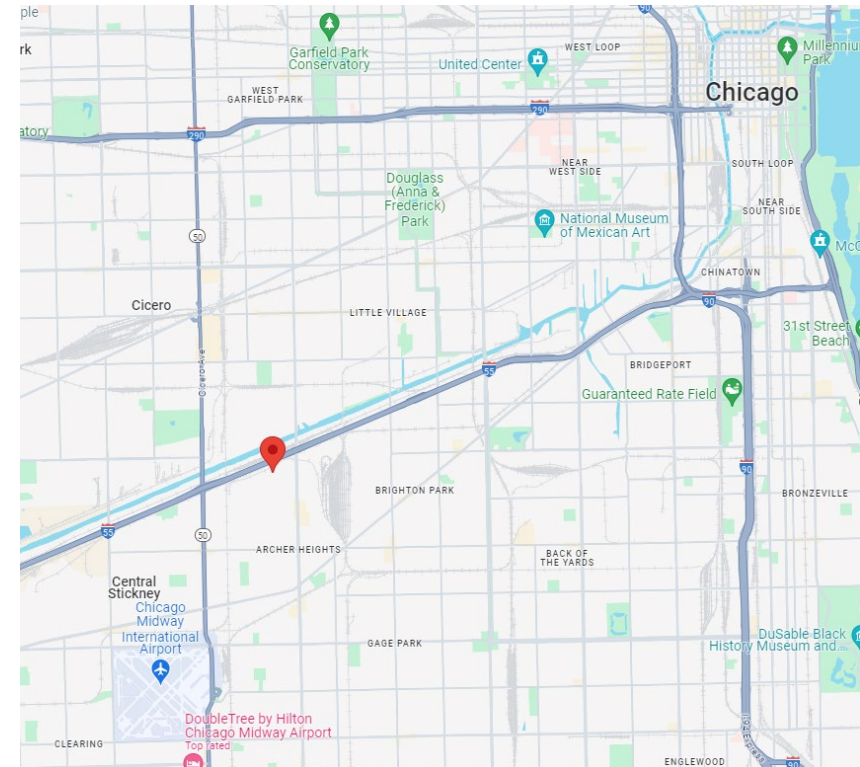
[zeke.rowan@avisonyoung.com](mailto:zeke.rowan@avisonyoung.com)

# General Information

Conveniently located outside Chicago, IL, and MDW Airport, this data center is a 71,561 sq ft secure facility with 7.5 MW of power. Facility sits on 2.6 acres zoned 5-93 (Commercial) allowing for potential expansion. Additional power available from utility provider, Commonwealth Edison Company.

Offering 6.92 MW of protected power and 28,400 sq ft of wholesale colocation space, this data center is ideally situated to serve customers in the Chicago area and throughout the Midwest region.

As a carrier neutral facility, available carriers include Cogent, Verizon, Century Link, and AT&T with the ability to bring in additional carriers and dark fiber providers as required.



# Key Features

## Facilities

- Three 480v 3-phase utility feeds - 3000 amps each
- Utility Providers Nexterra Energy Services and Commonwealth Edison Company
- Total 71,561 sq ft of space, 28,400 sq ft available for wholesale
- Available office space and support services

## Security

- Multiple cameras tied into software with recording and 24/7 monitoring capabilities
- Card reader access control system
- Gated facility - card swipe required for access

## Fire Systems

- Vesda air sampling smoke detection system
- Fire suppression & detection system consists of smoke detectors and life safety devices

# Key Features

## Generator Systems

- Four 1500kW Diesel Generators with four 2,000amp Automatic Transfer Switches
- Each standby generator has individual diesel fuel system, including sub base fuel tanks, separate fuels tanks with day tanks & fuel monitoring systems.

## HVAC

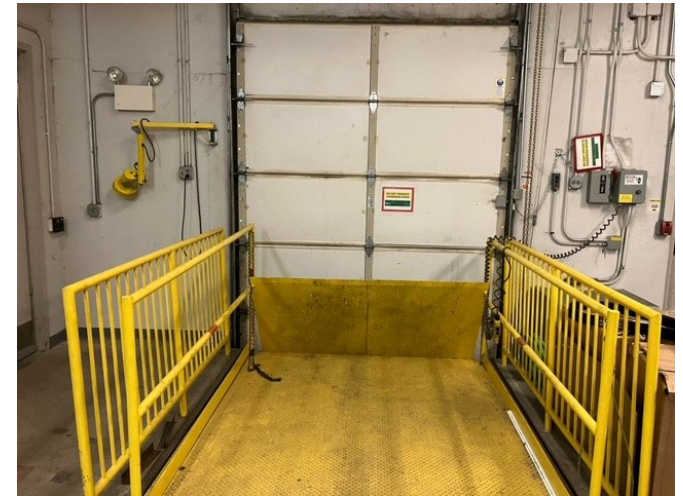
- Three 300 Ton Chillers, two 210 Ton Evaporative Air-Cooled Chillers, three 300-Ton Cooling Towers N+1 Redundancy
- Five Chilled Water Pumps & three Condenser Chilled Water Pumps; all N+1 Redundancy
- Four Fluid Coolers N+1 Redundancy
- Two 150 Ton & two 30 Ton Chilled Water Air-Handling Unites; all N+1 Redundancy
- Six 20 Ton & three 25 Ton DX Computer Room Units, one 18 Ton DX Computer Room Unit; all N+1 Redundancy
- Two 30 Ton Rooftop Units N+1 Redundancy
- 19 25 Ton & two 12.5 Ton Chilled Water Computer Room Units; both N+1 Redundancy



# Photos



# Photos



# Data Center Opportunity

- Flexible terms: Available to Purchase or Wholesale Colocation
- Low capital investment compared to expense of building your own facility
- An institutionally built and owned data center
- Disaster proof - designed to withstand hurricane force winds and other natural disasters
- Professionally maintained: maintenance, inspections and replacements routinely performed
- Speed to market - our data center is ready for you to customize and move into
- Backbone for customer connectivity, or use other carriers
- Available wave services to provide low-latency connectivity to your other facilities