



STONE COTTAGE MEDICAL BUILDING NEW CONSTRUCTION FOR SALE

SUN PEAK 4137 N HWY 224 | PARK CITY, UTAH 84098

OFFERED AT \$3,000,000

MARIAN CROSBY
435 640-1621
marian@mariancrosby.com

JILL SNYDER
435 671-0793
jill@wswcommercial.com

KATIE WILKING CCIM, MRED
435 640-4964
katie@wswcommercial.com

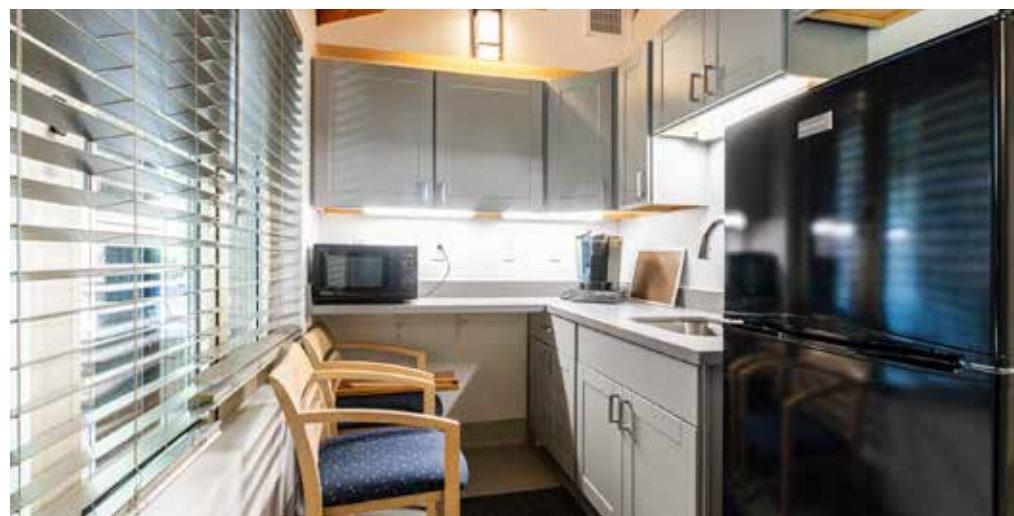
**BERKSHIRE
HATHAWAY** | UTAH
HOMESERVICES | PROPERTIES

COMMERCIAL DIVISION

© 2024 BHH Affiliates, LLC. An independently owned and operated franchisee of BHH Affiliates, LLC. Berkshire Hathaway HomeServices and the Berkshire Hathaway HomeServices symbol are registered service marks of Columbia Insurance Company, a Berkshire Hathaway affiliate. Equal Housing Opportunity. Information not verified or guaranteed. Berkshire Hathaway HomeServices and/or its representatives do not warrant or guarantee this information. Information herein was provided by Owner/Seller. Lessee/Purchaser is responsible to confirm any information considered a factor in a decision to lease or purchase.

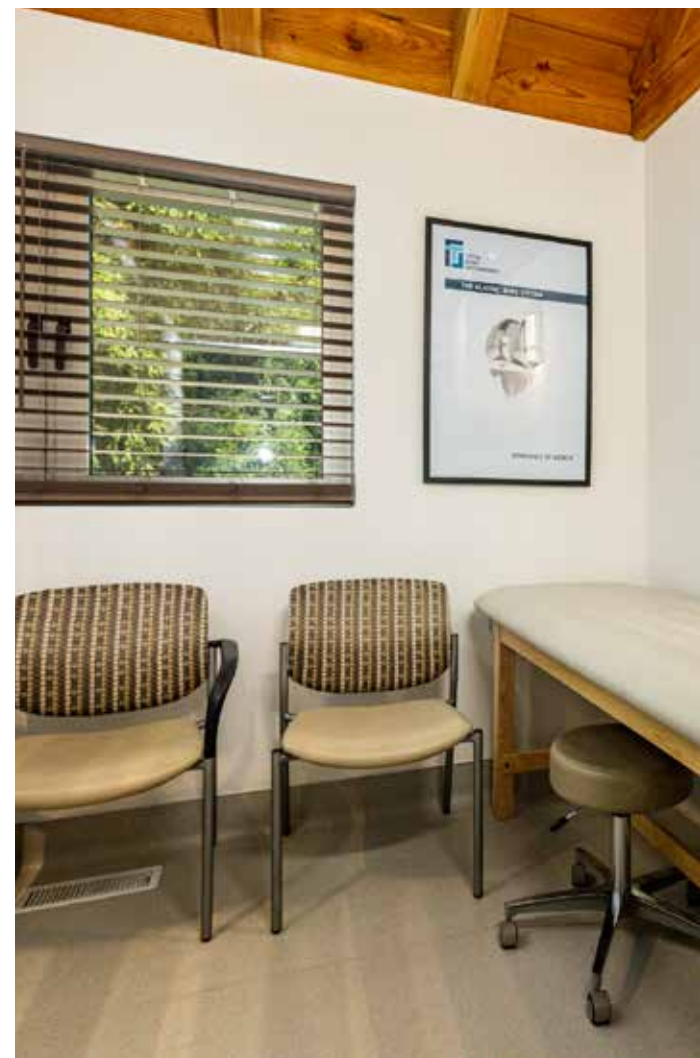
PROPERTY PHOTOS

SUN PEAK 4137 N HWY 224 | PARK CITY, UTAH 84098



PROPERTY PHOTOS

SUN PEAK 4137 N HWY 224 | PARK CITY, UTAH 84098



PROPERTY PHOTOS

SUN PEAK 4137 N HWY 224 | PARK CITY, UTAH 84098



MAIN LEVEL - FLOORPLAN

SUN PEAK 4137 N HWY 224 | PARK CITY, UTAH 84098

1,724 TOTAL BUILDING SQUARE FEET*



*Square Footage is per county records, but not verified or guaranteed. Buyer is advised to engage professional opinion from qualified appraiser or builder to verify square footage.

BASEMENT - FLOORPLAN

SUN PEAK 4137 N HWY 224 | PARK CITY, UTAH 84098

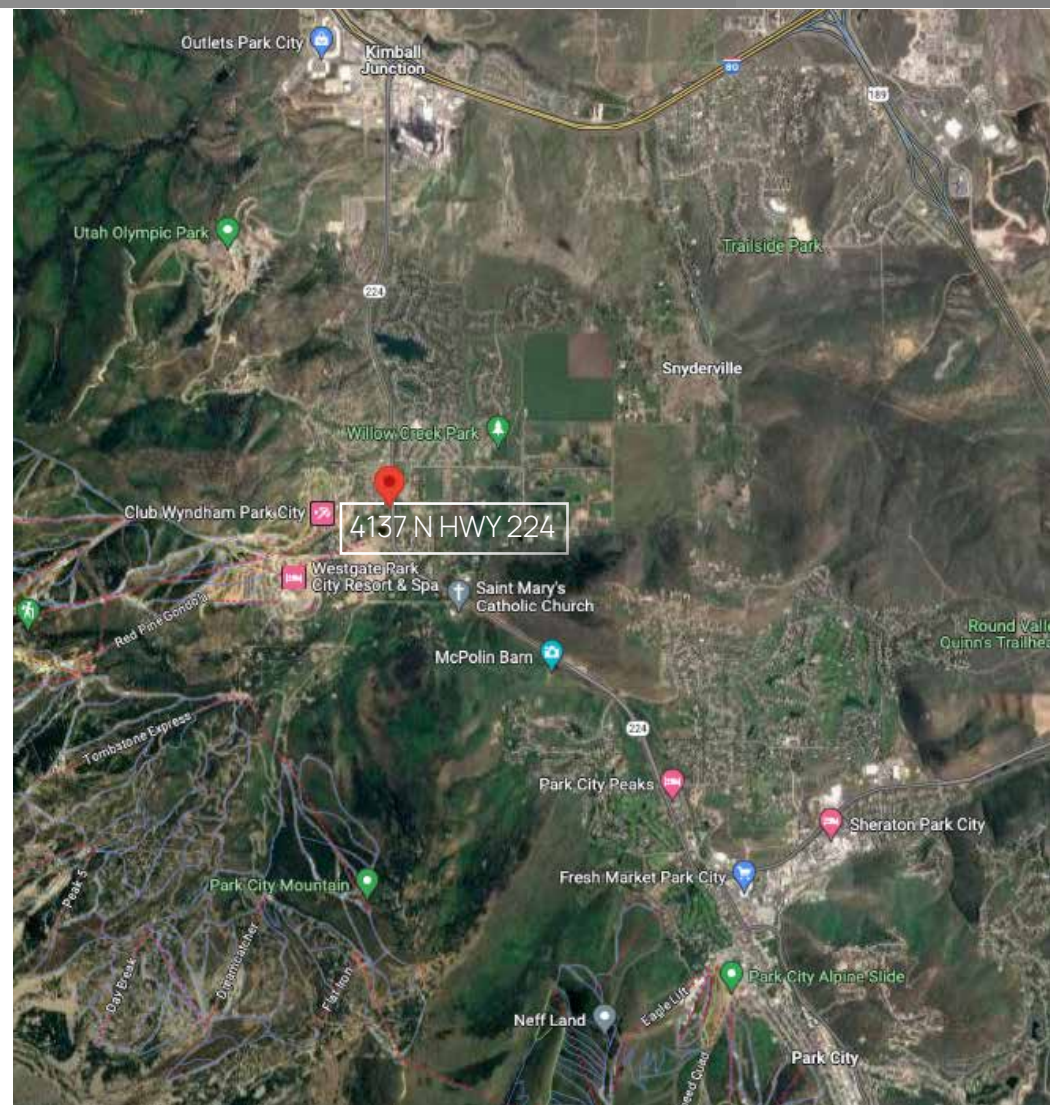
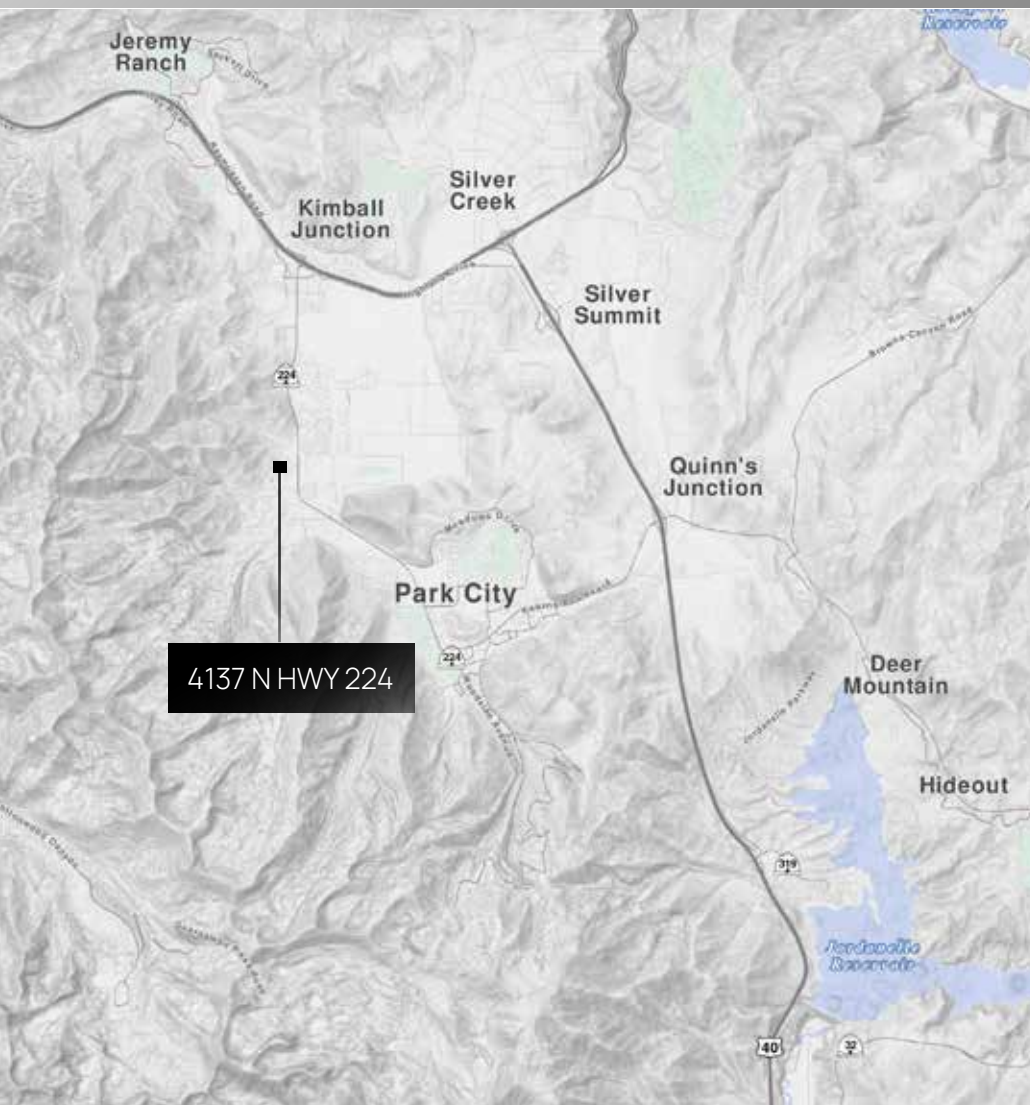
1,724 TOTAL BUILDING SQUARE FEET*



*Square Footage is per county records, but not verified or guaranteed. Buyer is advised to engage professional opinion from qualified appraiser or builder to verify square footage.

LOCATION

SUN PEAK 4137 N HWY 224 | PARK CITY, UTAH 84098





SUN PEAK

4137 N HWY 224

PARK CITY, UTAH 84098

- Free Standing Building on .37-Acre
- Historic Property Renovated in 2023
- 1724 Total Building Square Feet
- Reception; Office; Exam; Procedure Rooms
- Office Furnishings; Examination and Procedure Tables
- Break Room; Kitchenette
- Radiant Heated Patio
- Private Generator
- Direct Access from HWY 224
- Private Parking with 9 Parking Spaces
- Outdoor Event Areas
- Owner/User
- Seller Financing Available

\$3,000,000

CALL FOR MORE INFORMATION

i

BHHSUTAH.COM

MARIAN CROSBY

435 640-1621

marian@mariancrosby.com

JILL SNYDER

435 671-0793

jill@wswcommercial.com

KATIE WILKING CCIM, MRED

435 640-4964

katie@wswcommercial.com

**BERKSHIRE
HATHAWAY**
HOMESERVICES

UTAH
PROPERTIES

COMMERCIAL DIVISION