

FOR SALE | ±81,814 SF INDUSTRIAL COMPLEX

990 Jefferson Road

SUMTER, SOUTH CAROLINA 29153

Property Video



WYLIE COKER
+1 803.468.0132
wcoker@wilsonkibler.com

GEORGE MCCUTCHEN, CCIM, SIOR
+1 803 463 9040
gmccutchen@wilsonkibler.com

JAMES ROGERS, SIOR
+1 803.255.8621
james.rogers@wilsonkibler.com



Contact Information

WYLIE COKER

+1 803 468 0132

wcoker@wilsonkibler.com

GEORGE MCCUTCHEN CCIM, SIOR

+1 803 463 9040

gmccutchen@wilsonkibler.com

JAMES ROGERS, SIOR

+1 803 255 8621

james.rogers@wilsonkibler.com



WILSON KIBLER

1545 Sumter Street

Columbia, SC 29201

+1 803 779 8600

www.wilsonkibler.com

Wilson Kibler makes no guarantees, representations or warranties of any kind, expressed or implied, including warranties of content, accuracy and reliability. Any interested party should do their own research as to the accuracy of the information. Wilson Kibler excludes warranties arising out of this document and excludes all liability for loss and damages arising out of this document.



OFFERING SUMMARY

Wilson Kibler is pleased to present 990 Jefferson Rd, in Sumter, South Carolina. This is an opportunity to acquire a ±81,814 square-foot building well located in the Sumter market. 990 Jefferson Rd. is located near Hwy 378 and Hwy 521 and the property features a favorable combination of access to I-95 and I-20. The distance to I-95 is 18 miles and to I-20 is 18 miles.

South Carolina is recognized as one of the strongest economies in the country, and one of the fastest growing states. In fact, according to Uhaul, it was the #1 in-migration destination in the entire U.S.



\$4,950,000

Sale Price

[Property Video](#)

PROPERTY SUMMARY

ADDRESS	990 Jefferson Rd, Sumter, SC 29153
PARCEL NUMBERS	230-00-01-047
ZONING	HI
SPRINKLER	Yes
MUNICIPALITY	Sumter County
SITE SIZE	±30.91 Acres
BUILDING SIZES	±81,814 Square Feet
YEAR BUILT	1992; 2000 Addition
CONSTRUCTION	6" Concrete Slab
CEILING HEIGHT	Warehouse - 24'-28' Clear Height
DOCK DOORS	Four
DRIVE-IN DOORS	Five
PARKING	±60 Auto Spaces and ample extra truck court (or could be more auto)
POWER	Heavy Power - One 3,000 amp panel - One 2,000 amp panel - Four bus bars
CRANES	Two - 3 tons, 18' under hook



[Property Video](#)

Wilson Kibler makes no guarantees, representations or warranties of any kind, expressed or implied, including warranties of content, accuracy and reliability. Any interested party should do their own research as to the accuracy of the information. Wilson Kibler excludes warranties arising out of this document and excludes all liability for loss and damages arising out of this document.

PROPERTY SUMMARY

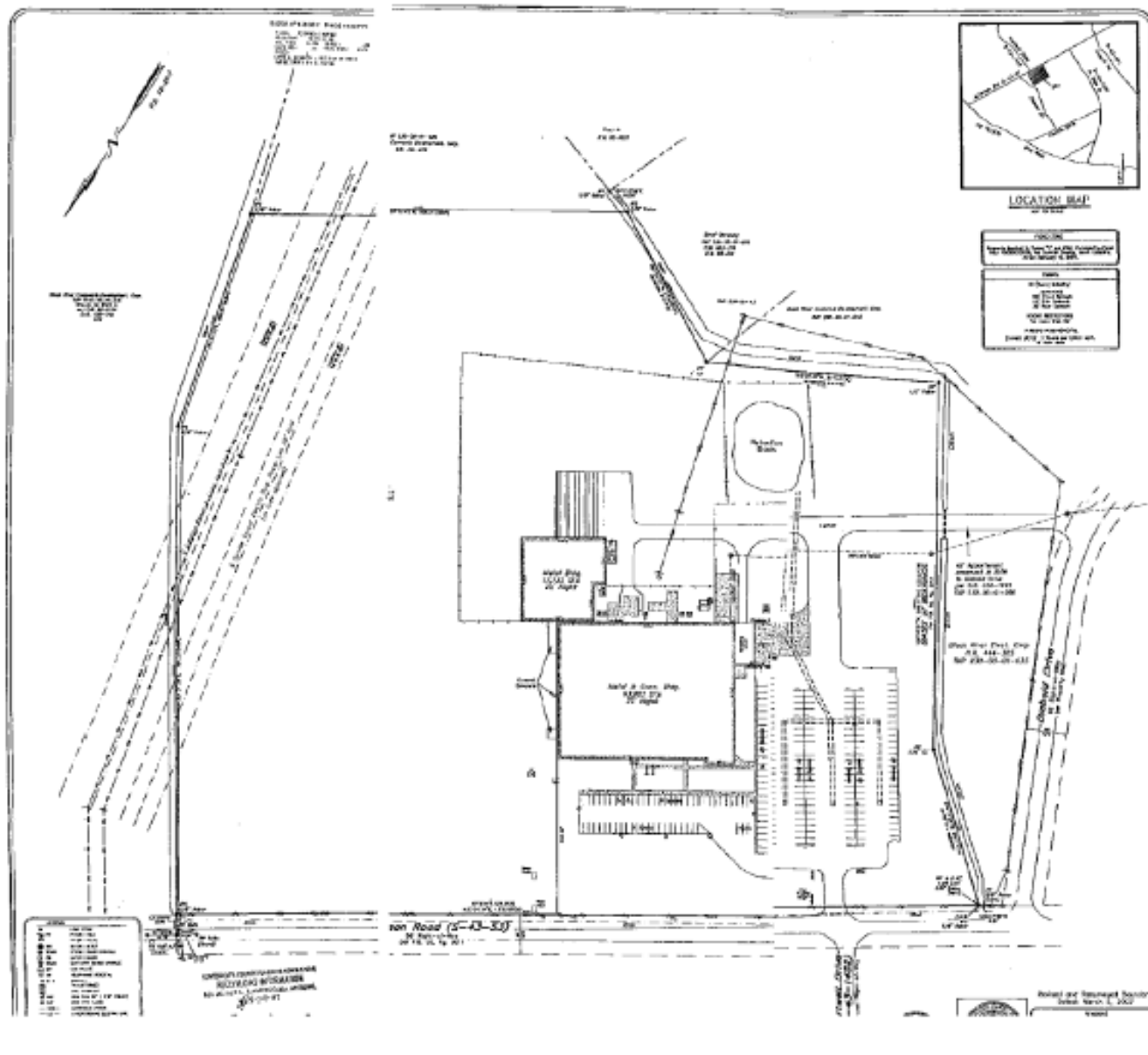
Aerial View | 81,814 SF Building



Wilson Kibler makes no guarantees, representations or warranties of any kind, expressed or implied, including warranties of content, accuracy and reliability. Any interested party should do their own research as to the accuracy of the information. Wilson Kibler excludes warranties arising out of this document and excludes all liability for loss and damages arising out of this document.

PROPERTY SUMMARY

Survey | 81,814 SF Building



Wilson Kibler makes no guarantees, representations or warranties of any kind, expressed or implied, including warranties of content, accuracy and reliability. Any interested party should do their own research as to the accuracy of the information. Wilson Kibler excludes warranties arising out of this document and excludes all liability for loss and damages arising out of this document.