

# FAIRMOUNT

MT. PLEASANT

## *Landing*





# FAIRMOUNT

MT. PLEASANT

## *Landing*



Early - Mid  
2026 Delivery



Newly renovated  
retail spaces



Updated  
landscaping &  
outdoor areas



High daily  
traffic counts



Ample parking



Prime Mt. Pleasant  
location



Surrounded by  
residential growth



Ideal for a variety  
of tenants

1035 - 1039 Johnnie Dodds Boulevard  
Mount Pleasant, SC 29464



**2**

Philip Simmons High School 771 Students

Philip Simmons Elementary School 501 Students

38,000 ADT

Clematis Ferry Rd

Publix

71,800 ADT

Bishop England High School 700 Students

Daniel Island School 1,170 Students

526

Port of Charleston

61,300 ADT

East Cooper Medical Center 130 Beds

Vibra Hospital of Charleston 59 Beds

James B. Edwards Elementary School 763 Students

Lucy Beckham High School 1,673 Students

Publix

74,100 ADT

TRADER JOE'S

Harris Teeter

PATRIOTS PLAZA

WHOLE FOODS

Staples

ALDI

FAIRMOUNT Landing

LOWES

41

Harris Teeter

MOUNT PLEASANT TOWNE CENTRE

beck OLD NAVY chico's

ULTA jenie's JOS A. BANK

bluemercury

WHITE|BLACK

BANANA REPUBLIC HYATT

BARNES & NOBLE TALBOTS

ETHAN ALLEN REGAL CINEMAS

lululemon athletica

VERSONA

ATHLETA VICTORIA'S SECRET

SYCYCLE BAR

Bath & Body Works

Palmetto Moon LUSH

29,800 ADT

Thomas C. Carlo Middle School 1,125 Students

Charles Pinckney Elementary School 700 Students

Laurel Hill Primary School 739 Students

Publix

54,700 ADT

MARKET AT OAKLAND

Walmart KOHL'S

Jennie Moore Elementary School 1,004 Students

Laing Middle School 1,012 Students

17

SHOPPES AT SEASIDE FARMS

Target

Massage Envy

facelagic

Harris Teeter

WANDO CROSSING

Walmart petco

TJ-maxx Office DEPOT

HomeGoods Michaels Marshalls

KIRKLAND'S

DOLLAR TREE

517

19,900 ADT

55,300 ADT

MOUNT PLEASANT REGIONAL-FAISON FIELD AIRPORT

Carolina Park Elementary School 899 Students

Costco

Wando High School 2,596 Students

17

LOWES

1

**HIGH AERIAL**

# HIGH AERIAL





# ZOOM AERIAL











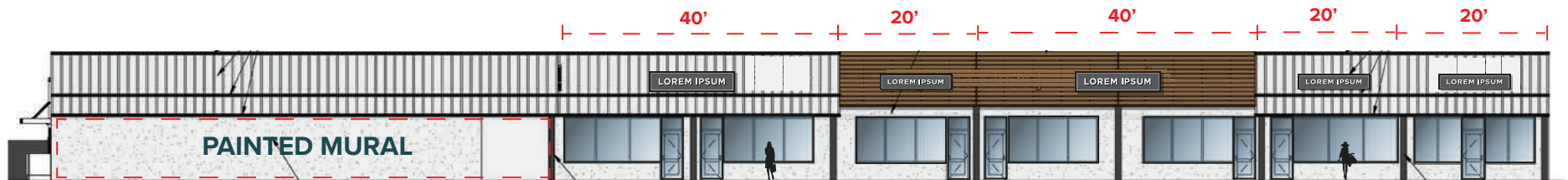
## MONUMENT SIGNAGE



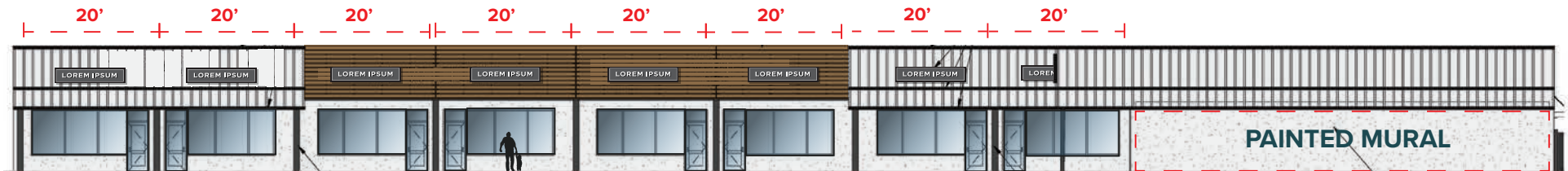
## VEHICULAR DIRECTIONAL SIGNAGE



## EAST BUILDING ELEVATIONS



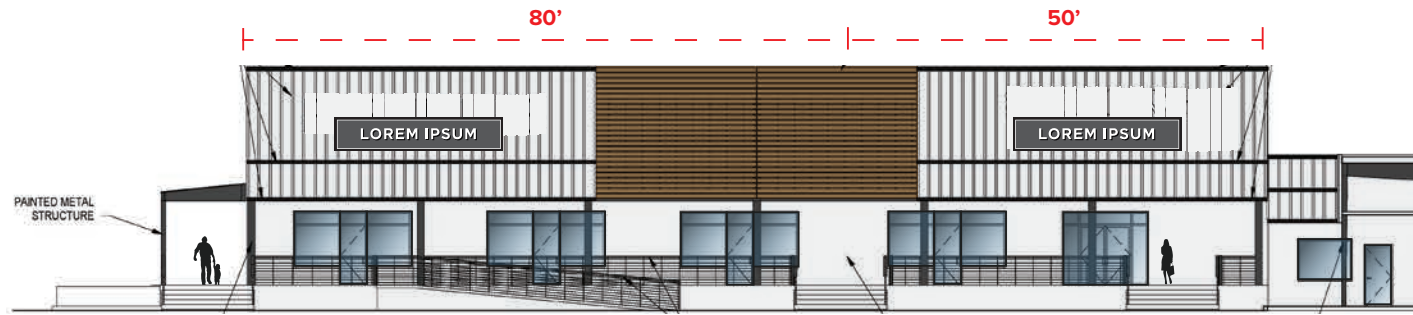
1 East Building - West Elevation  
Scale: 1/16" = 1'-0"



2 East Building - South Elevation  
Scale: 1/16" = 1'-0"



# WEST BUILDING ELEVATIONS



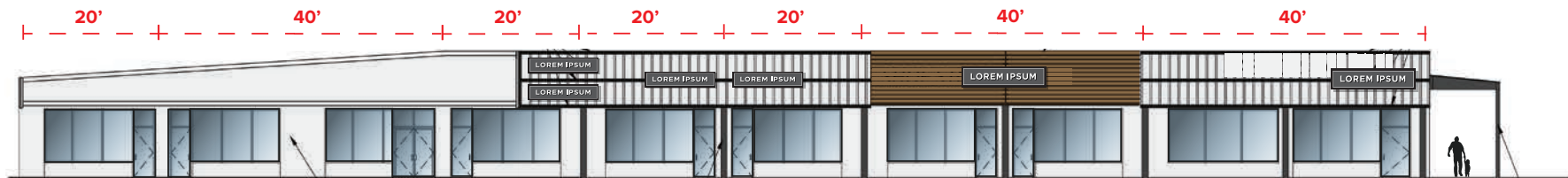
1 West Building - East Elevation  
Scale: 1/16" = 1'-0"



2 West Building - South Elevation  
Scale: 1/16" = 1'-0"



3 West Building - South Elevation  
Scale: 1/16" = 1'-0"



1 West Building - West Elevation  
Scale: 1/16" = 1'-0"













*Mount Pleasant*  
SOUTH CAROLINA

# Key Metrics



Retail in Mount Pleasant, SC, is thriving and diverse, serving both its growing population and steady stream of visitors. The town features a healthy mix of national chains, regional brands, and locally owned boutiques, spread across well-developed shopping centers and walkable districts.



Business in Mount Pleasant is vibrant and growing, fueled by a strong local economy, educated workforce, and strategic location near Charleston. The town supports a wide mix of industries, including healthcare, professional services, construction, retail, hospitality, and real estate development.



The town offers a growing arts and culture scene that reflects its coastal charm and community pride. The town hosts regular events like the Blessing of the Fleet & Seafood Festival, ArtFest, and local farmers markets that often feature live music, handmade crafts, and regional artwork.



Mount Pleasant, SC, is home to a variety of parks that offer scenic beauty, outdoor recreation, and community events. One of the most popular is Memorial Waterfront Park, located beneath the Ravenel Bridge, featuring a pier, playground, war memorial, and panoramic views of Charleston Harbor. It's also a gathering spot for festivals and outdoor concerts.



Highway 17 runs through the town and serves as the main commercial corridor, while the Arthur Ravenel Jr. Bridge provides quick access to downtown Charleston, making commuting easy for many residents. Ample parking and modern infrastructure support the town's rapid growth and daily traffic flow.

Fairmount Landing is located in Mount Pleasant, SC, which is a thriving coastal town just across the Cooper River from downtown Charleston. Known for its scenic beauty, historic charm, and family-friendly atmosphere, Mount Pleasant blends the best of Lowcountry living with modern amenities. The town features picturesque neighborhoods, waterfront parks like Shem Creek, and easy access to nearby beaches such as Sullivan's Island and Isle of Palms. Its historic roots are visible in sites like the Old Village and Patriots Point Naval & Maritime Museum, which includes the USS Yorktown.

Over the past few decades, Mount Pleasant has grown rapidly, becoming one of South Carolina's most desirable places to live. It offers top-rated schools, a variety of shopping and dining options, and a strong local economy supported by healthcare, retail, and professional services. Despite its growth, the town remains committed to preserving its coastal environment and historic character, offering residents a high quality of life just minutes from Charleston's cultural and economic center.



# DEMOGRAPHICS

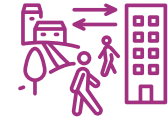
**48k VPD**  
Highway 17



**0.60%**  
Annual Growth Rate



**132,700**  
Employee Population



1 MILE

3 MILES

5 MILES



**Total Population**

9,510

50,809

98,096



**Total Households**

4,272

23,415

44,765



**Daytime Population**

15,035

63,560

132,709



**Median Household  
Income**

\$110,924

\$116,949

\$111,419



**2025 Consumer  
Spending**

\$592,488,962

\$3,326,937,763

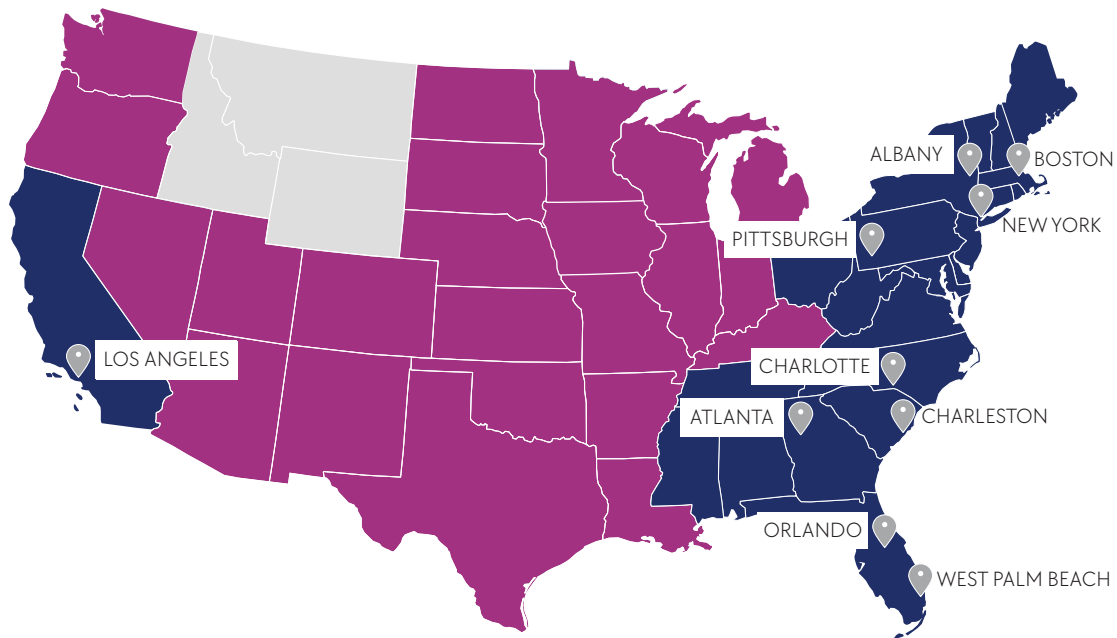
\$6,155,298,937





# Atlantic

RETAIL



## CHARLESTON

320 Wingo Way  
Suite 200  
Mt. Pleasant, SC  
Phone: 843.735.2559



[www.atlanticretail.com](http://www.atlanticretail.com)



[linkedin.com/company/atlantic-retail-properties](https://www.linkedin.com/company/atlantic-retail-properties)



[instagram.com/atlantic\\_retail](https://www.instagram.com/atlantic_retail)

**REALTY**  
**RESOURCES**

**CHAINLINKS**  
RETAIL ADVISORS

## JOE PURZE



843.735.2559



[jpurze@atlanticretail.com](mailto:jpurze@atlanticretail.com)

# CONTACT