



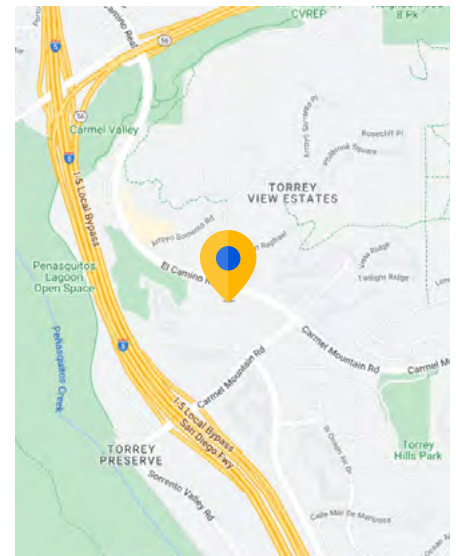
For Lease

# 11236 El Camino Real

## San Diego, CA 92130

### Overview

Premises:	2nd floor
SF:	7,072
Term:	Negotiable
Available:	60 Days
Rental Rate:	\$4.25/FS
Built:	1998
Parking:	3.5/1,000 SF



### Space Specs

- Unique opportunity to lease an entire floor
- High-quality existing office improvements
- Mostly open layout with a main conference room
- Multiple meeting rooms that can be used as offices

### For more information:

**Glenn Friedrich**  
858.922.5503 mobile  
gfriedrich@cresa.com  
DRE#: 00961346

**Tommy Friedrich**  
760.419.3342 mobile  
tfriedrich@cresa.com  
DRE#: 01972321

# 11236 El Camino Real

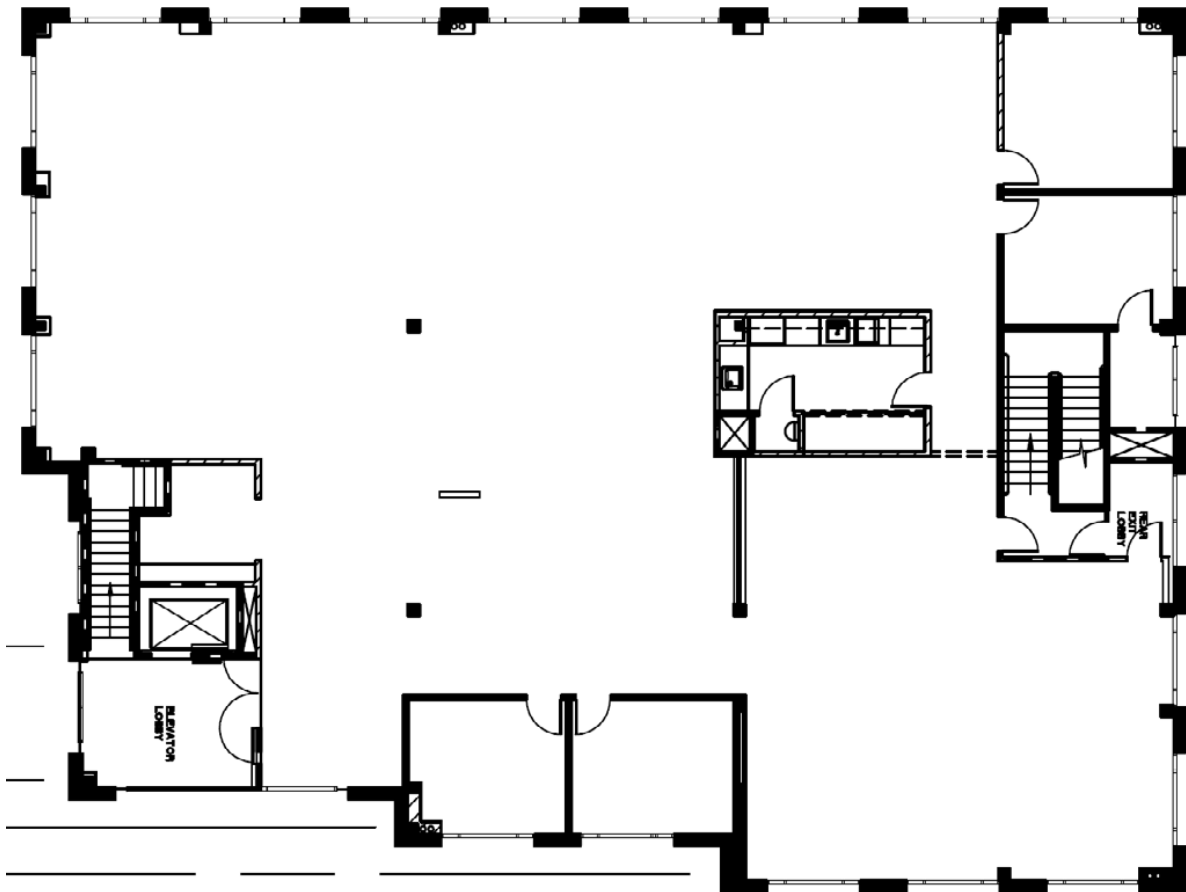
San Diego, CA 92130





# 11236 El Camino Real

San Diego, CA 92130



## For more information:

### Glenn Friedrich

858.922.5503 mobile  
gfriedrich@cresa.com  
DRE#: 00961346

### Tommy Friedrich

760.419.3342 mobile  
tfriedrich@cresa.com  
DRE#: 01972321



Cresa © 2025. All rights reserved. The information contained in this document has been obtained from sources believed reliable. While Cresa does not doubt its accuracy, Cresa has not verified it and makes no guarantee, warranty, or representation about it. It is your responsibility to independently confirm its accuracy and completeness. Any projections, opinions, assumptions or estimates used are for example only and do not represent the current or future performance of the property. The value of this transaction to you depends on tax and other factors which should be evaluated by your tax, financial and legal advisors. You and your advisors should conduct a careful, independent investigation of the property to determine to your satisfaction the suitability of the property for your needs.