

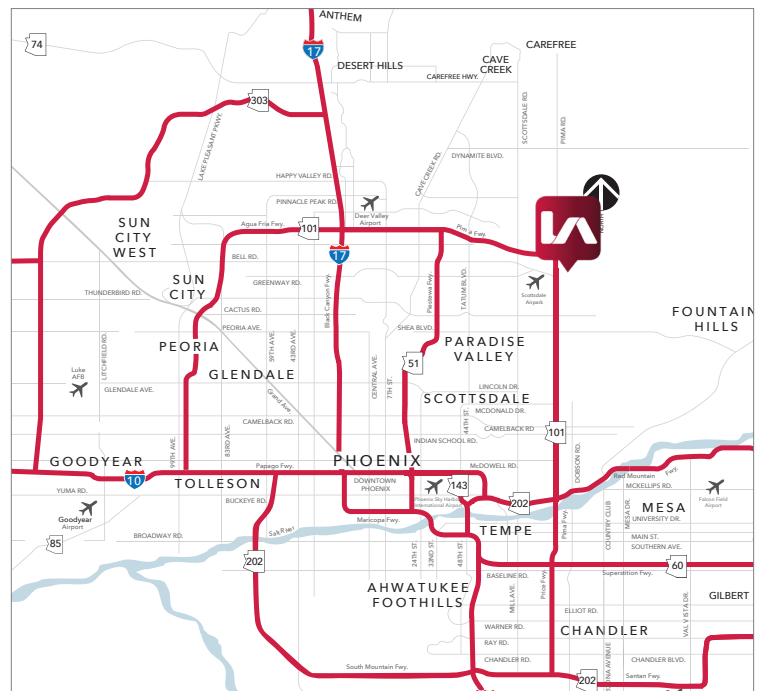
FOR SALE
8970 EAST BAHIA DRIVE
SCOTTSDALE, ARIZONA



FEATURES

- 35,667 SF Building
- Zoning: I-1, PCD
- 2.67 Acres
- 5 Grade Level Doors
- Parking Approximately 2.3:1000
- Freeway Visibility from the 101 Freeway
- 95% HVAC
- Corp Image
- 18' Clear Height Warehouse Spec
- Year Built: 2005
- Built to Suit: LGE Design Build

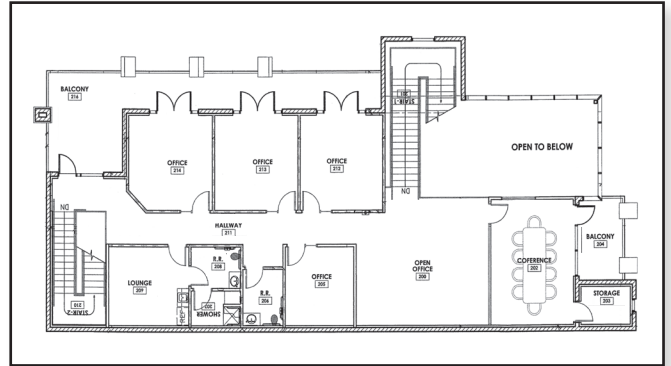
Robert Kling
bkling@leeazona.com
D 602.954.3751



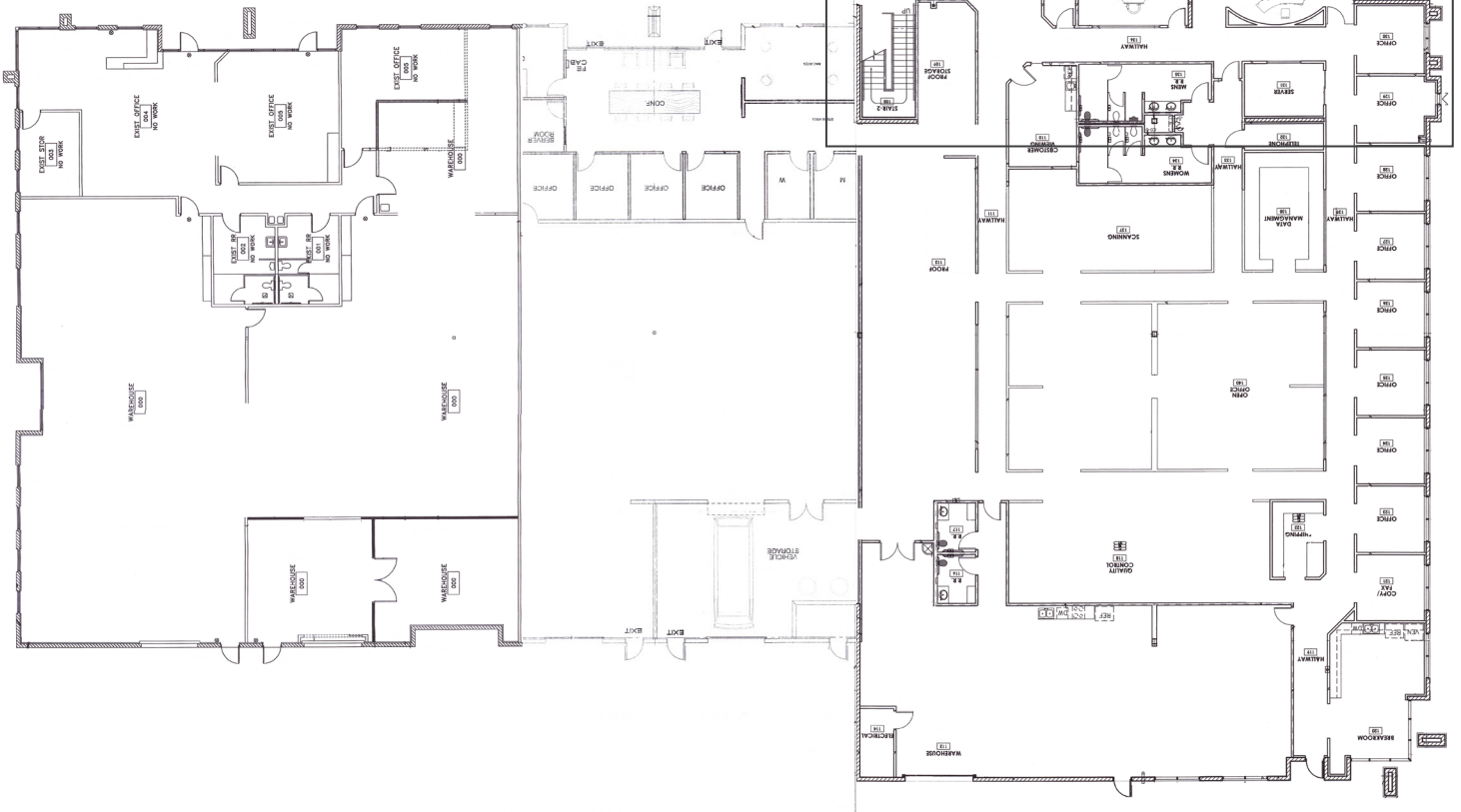
All information furnished regarding property for sale, rental or financing is from sources deemed reliable, but no warranty or representation is made to the accuracy thereof and same is submitted to errors, omissions, change of price, rental or other conditions prior to sale, lease or financing or withdrawal without notice. No liability of any kind is to be imposed on the broker herein.

FOR SALE
8970 EAST BAHIA DRIVE
SCOTTSDALE, ARIZONA

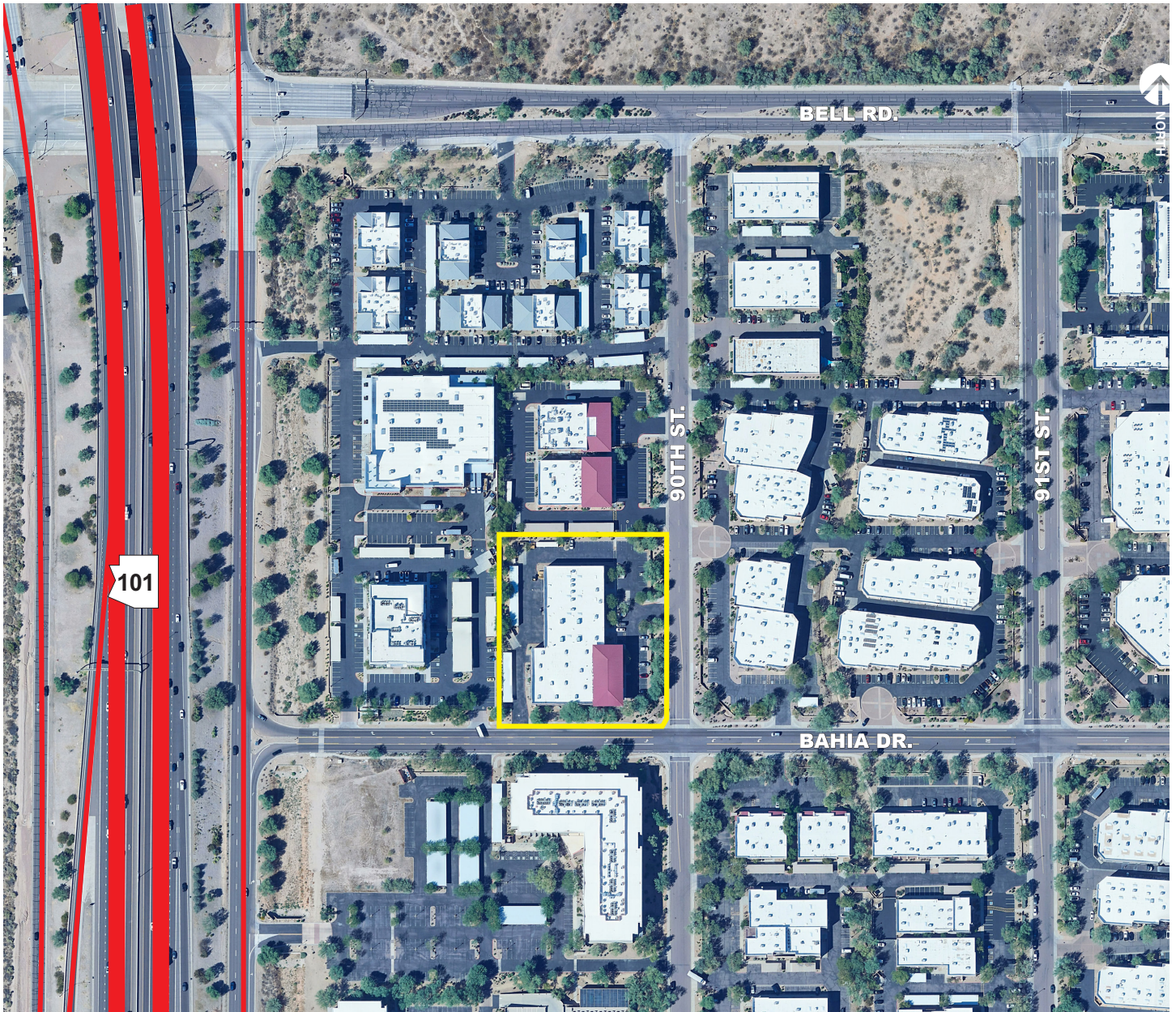
SECOND FLOOR



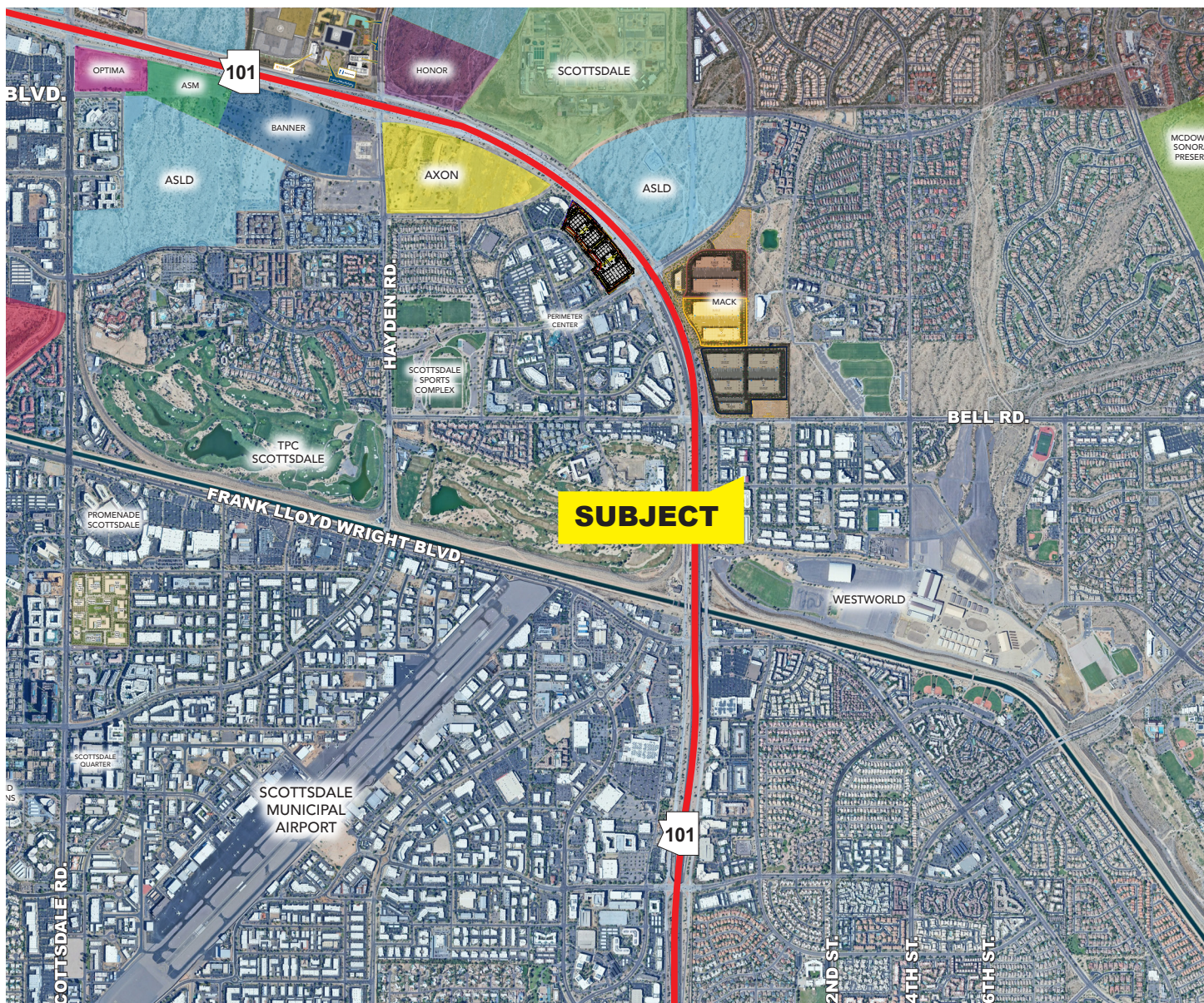
FIRST FLOOR



FOR SALE
8970 EAST BAHIA DRIVE
SCOTTSDALE, ARIZONA



FOR SALE
8970 EAST BAHIA DRIVE
SCOTTSDALE, ARIZONA



DESERT RIDGE	7 Miles	SCOTTSDALE PROMENADE	2.4 Miles	SCOTTSDALE QUARTER	3.2 Miles
	35 Restaurants		15 Restaurants		25 Restaurants

Robert Kling
bkling@leearizona.com
D 602.954.3751

All information furnished regarding property for sale, rental or financing is from sources deemed reliable, but no warranty or representation is made to the accuracy thereof and same is submitted to errors, omissions, change of price, rental or other conditions prior to sale, lease or financing or withdrawal without notice. No liability of any kind is to be imposed on the broker herein.