

287 7TH AVENUE, NEW YORK, NY 10001

FOR LEASE

# 2,000 SF QUICK SERVE RESTAURANT

Between West 26th Street & West 27th Street



**SHLOMI BAGDADI**  
212.433.3355 x101  
sb@tristatecr.com

**AVI SAADIA**  
212.433.3355 x1011  
avi.s@tristatecr.com

**TRI STATE COMMERCIAL®**



## PROPERTY SUMMARY

### LOCATION

Located in the Chelsea neighborhood of Manhattan.

### SPACE DETAILS

- Full Building Branding Opportunity – Second Generation Restaurant/QSR
- Black Iron Duct to the Roof, 3-Inch High-Pressure Gas Line, and 600 Amps of Electrical Capacity
- Perfect Opportunity for Any Fast Casual or Takeout Restaurant to Serve This Thriving Student and Professional Population
- Walk-Ins and Freezers on the Ground Floor
- Full Basement, and Potential for Storage
- Blade Signage is Available for Visibility Up and Down the Avenue

### TRANSPORTATION

**1 2** Trains at 28th Street

**C E** Trains at 23rd Street

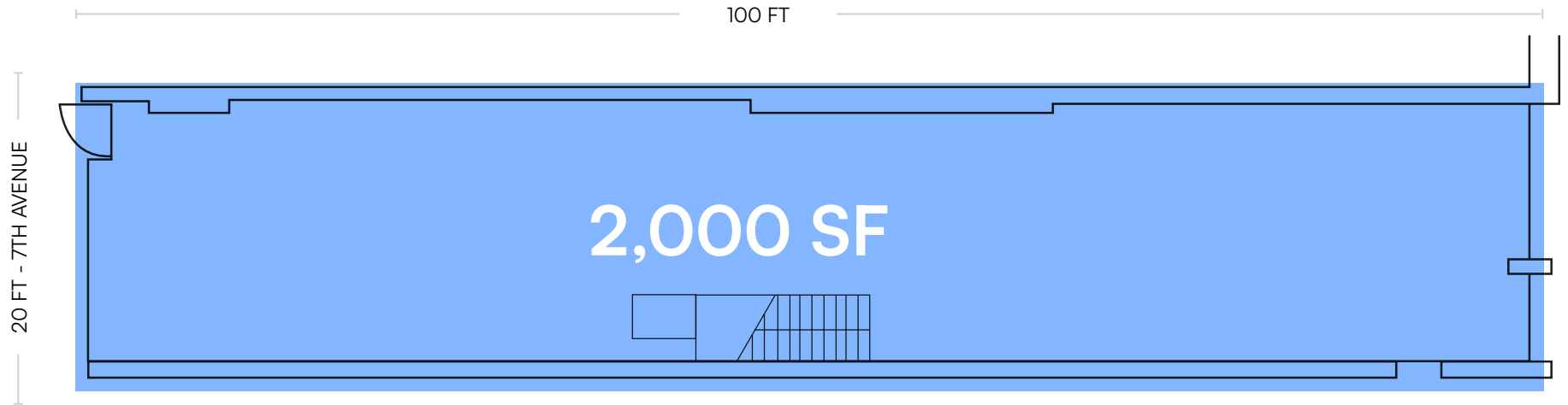
**M7 M20 M55 M23-SBS** Bus Lines

### NEIGHBORS

Chipotle Mexican Grill, Dunkin', Planet Fitness, Playa Bowls, Starbucks, CAVA, Chase Bank, McDonald's, Walgreens Pharmacy, The Museum at FIT, Blink Fitness Chelsea, Sip Coffee, Subway, Just Salad, VIGO, Furnish Green, Synagogue Art and Designs of David Klass, Wanderfuls, Planter Resource, The Wilson, American Lyric Theater, Helen Mills Event Space and Theater, and more!



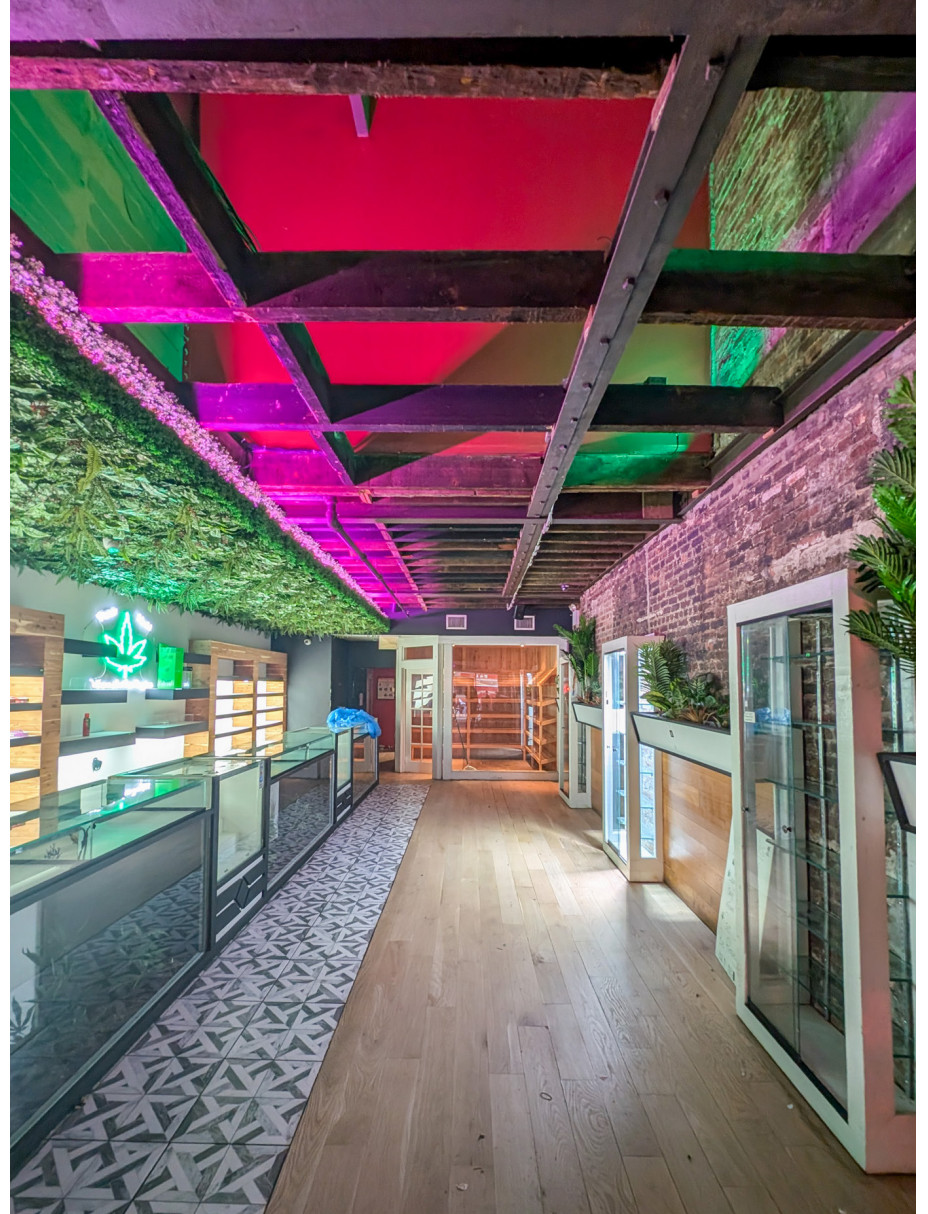
## FLOOR PLANS



All square footages are approximate

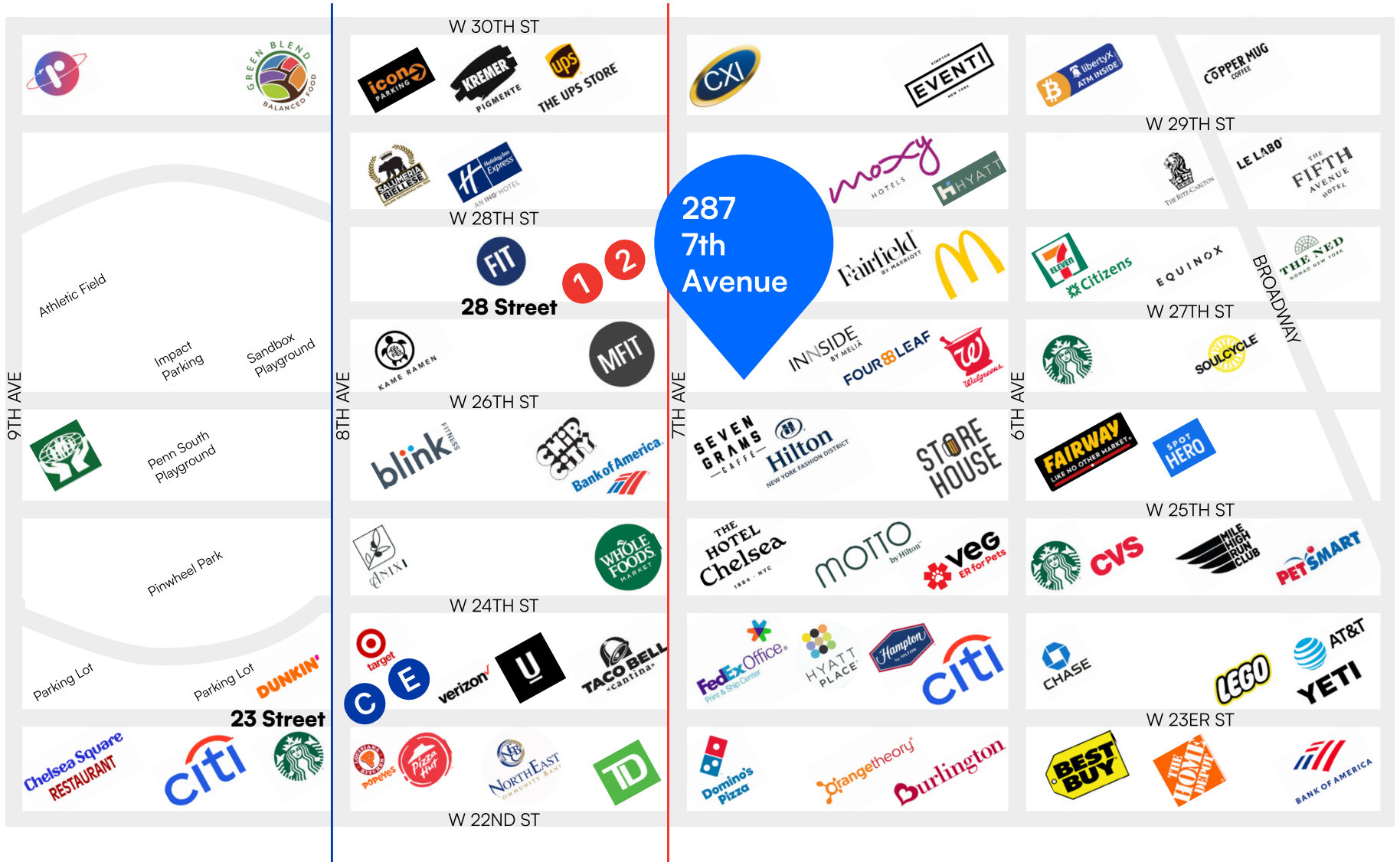


## PROPERTY PHOTOS





# RETAIL MAP



287 7TH AVENUE, NEW YORK, NY 10001

# 2,000 SF QUICK SERVE RESTAURANT

Between West 26th Street & West 27th Street

For Pricing Call: **212.433.3355**

**SHLOMI BAGDADI**  
212.433.3355 x101  
sb@tristatecr.com

**AVI SAADIA**  
212.433.3355 x1011  
avi.s@tristatecr.com

**TSC.**