

**2690 28th Street  
Unit E  
Boulder, CO**

**4,100sf + 209sf  
Outside Patio Area**

## **Retail Space Available!**

- Zoned CB-E – Variety of Uses
- Very Busy Shopping Center
- Monument Signage on 28th Street
- Store Front Signage Available
- Convenient 28th Street Access
- Parking on all sides of the Complex and Street Parking along Bluff Street
- South facing windows



**TEBO**  
PROPERTIES

Contact us for more information:  
[leasing@teboproperties.com](mailto:leasing@teboproperties.com)  
303-447-8326  
[www.TEBOproperties.com](http://www.TEBOproperties.com)

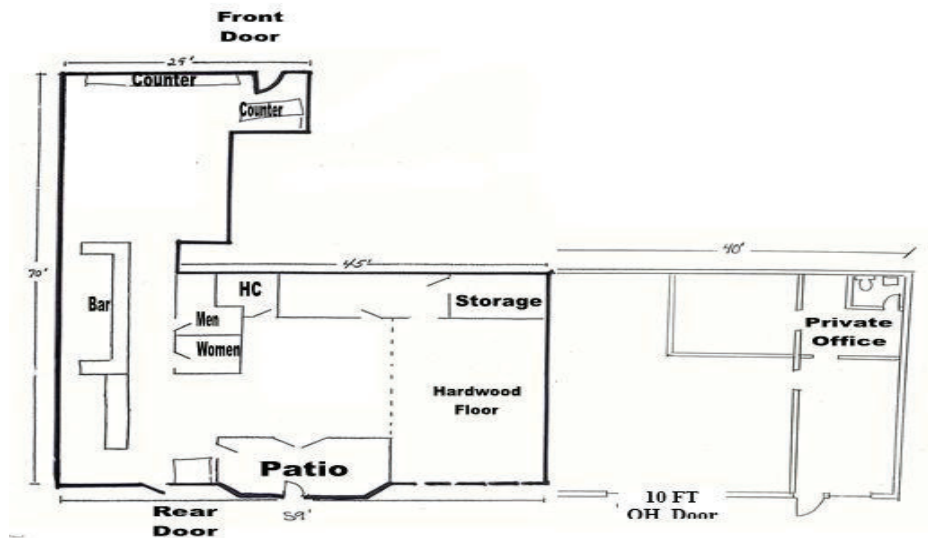


**TEBO**  
PROPERTIES

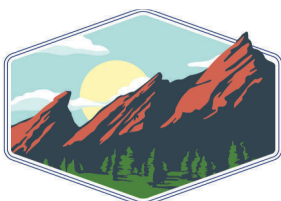
## 2690 28th Street, Unit E, Boulder



Unit	Square Footage	Price
Unit E	4,100sf + 209sf Outside Patio	\$23.00/SF + \$10.49 (NNN)



Unit E - Floor Plan



**TEBO**  
PROPERTIES

Contact us for more information:  
[leasing@teboproperties.com](mailto:leasing@teboproperties.com)  
 303-447-8326  
[www.TEBOproperties.com](http://www.TEBOproperties.com)