

# 11085

# Harmon Road

FOR SUBLEASE

130,000 SF

through 1/31/2029

CLASS A  
INDUSTRIAL WAREHOUSE



**CONTACT:**

**Bob Scully**  
Senior Vice President  
T +1 817 919 4890  
bob.scully@cbre.com

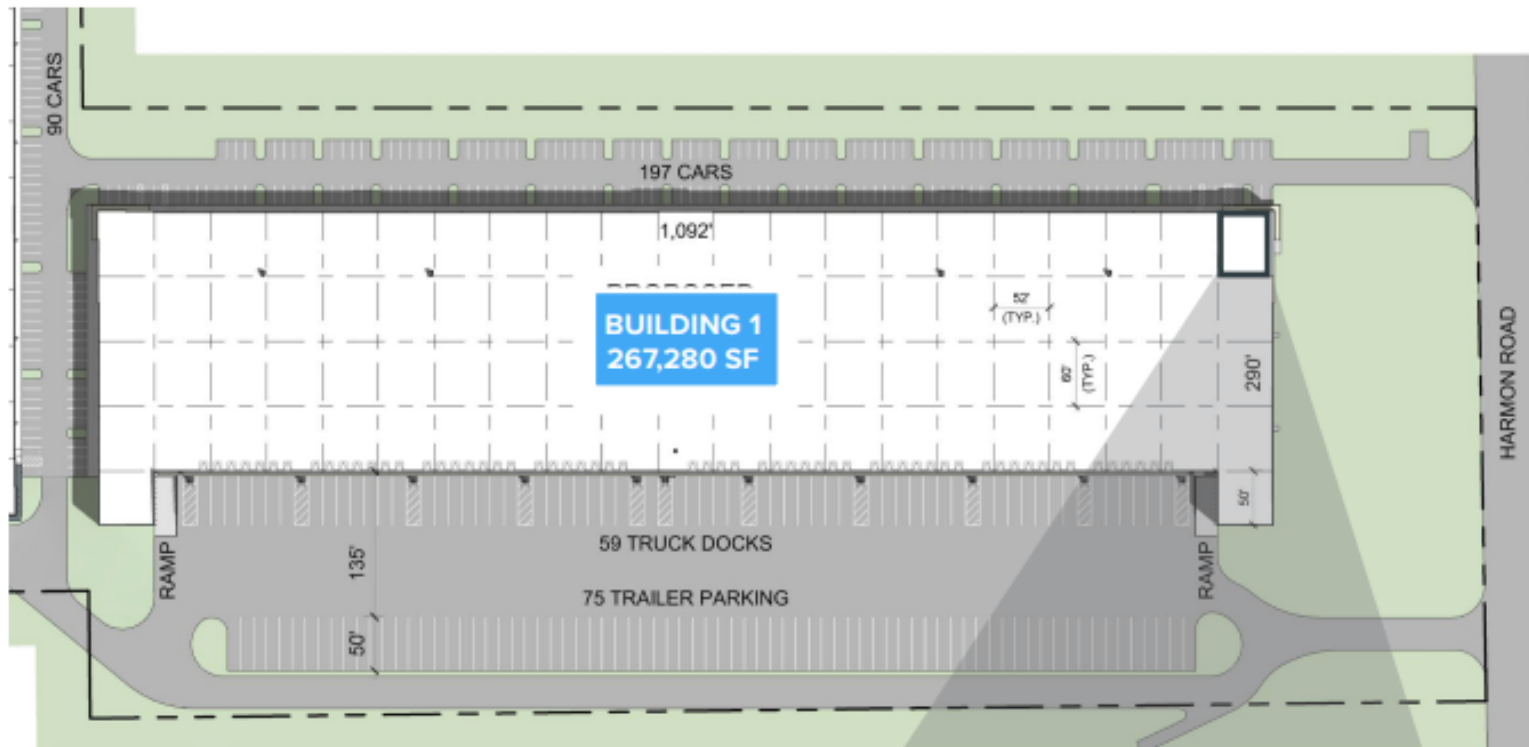
**Brice Wells**  
Senior Vice President  
T +1 817 333 1114  
brice.wells@cbre.com

**CBRE**



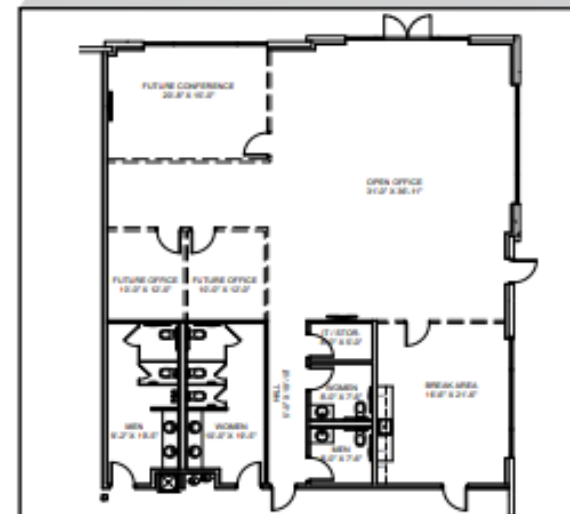
## Property Features

- Class A building
- 267,280 Total SF
- Office SF: 3,134 SF
- Loading: Rear-loaded
- Truck Court: 185'
- Clear Height: 32'
- Levelers: (10) McGuire
- 40,000lb 7'x8' Mechanical
- Trailer Parking: 75 spaces

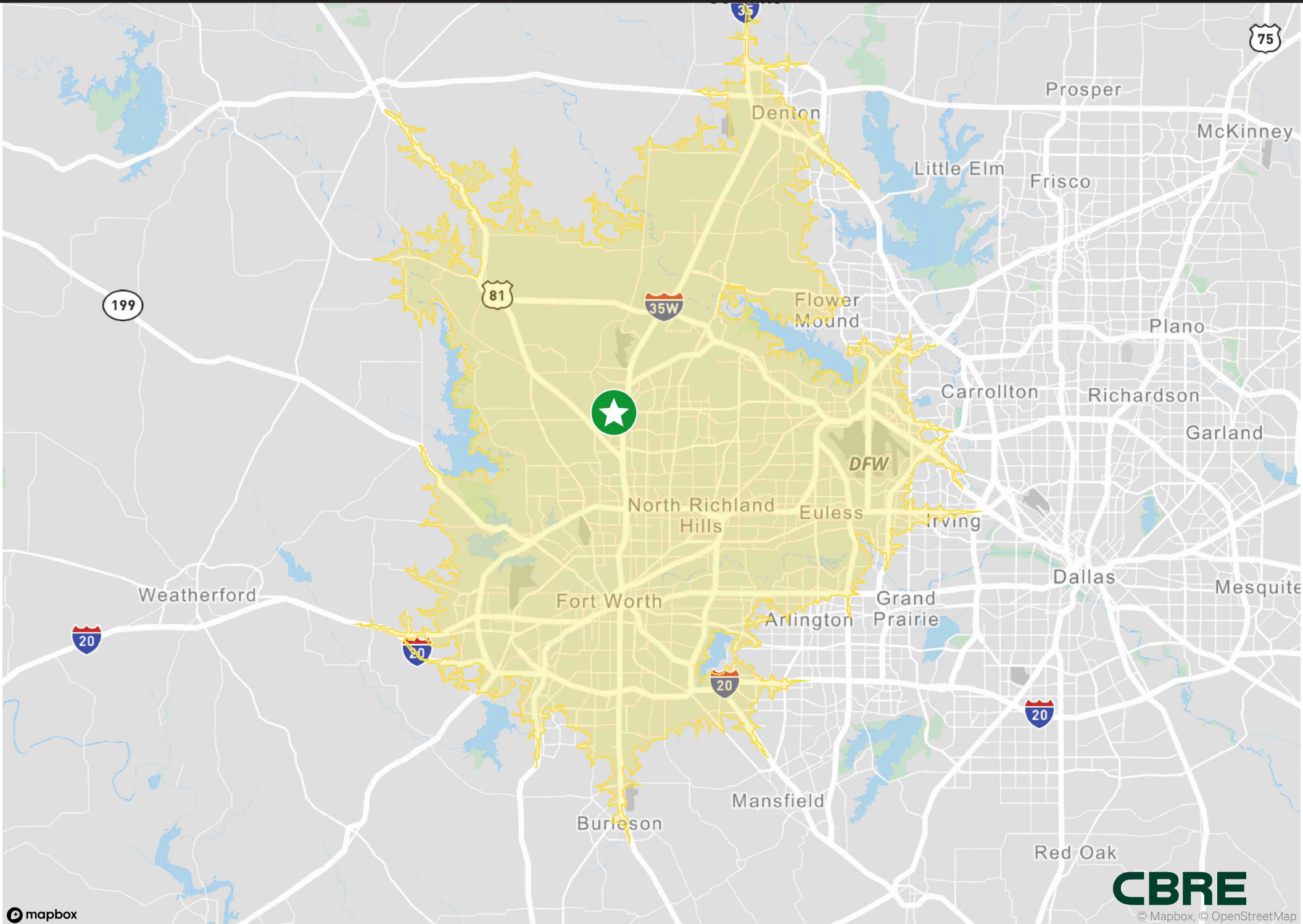


### BUILDING 1

Building Size:	267,280 SF
Spec Office:	3,134 SF
Docks:	59
Levelers:	(10) McGuire 40,000 lb 7'x8' Mechanical
Drive-Ins:	2
Column Spacing	52' x 60'



# 30 Minute Drive Time Map



11085 Harmon Road, Fort Worth TX



**CONTACT:**

**Bob Scully**  
Senior Vice President  
T +1 817 919 4890  
[bob.scully@cbre.com](mailto:bob.scully@cbre.com)

**Brice Wells**  
Senior Vice President  
T +1 817 333 1114  
[brice.wells@cbre.com](mailto:brice.wells@cbre.com)

**CBRE**