

CROSS WESTCHESTER EXECUTIVE PARK

500 Executive Blvd, Elmsford, NY



5,450 RSF | AVAILABLE SUMMER 2026

CONTACT EXCLUSIVE LISTING AGENTS

William Anson
wanson@rmfriedland.com
914.968.8500 ext 329

Kevin Langtry
klangtry@rmfriedland.com
914.968.8500 ext 322

RM FRIEDLAND

COMMERCIAL REAL ESTATE SERVICES

440 Mamaroneck Ave | Harrison, NY 10528 | rmfriedland.com | 914.968.8500

5,450 RSF | AVAILABLE SUMMER 2026

CROSS WESTCHESTER EXECUTIVE PARK

500 Executive Blvd, Elmsford, NY

CURRENT CONFIGURATION:

WAREHOUSE: 5,450 RSF +/-

***All spaces can be reconfigured to meet tenant's requirements**

LOADING:

1 Dock

CEILING HEIGHT:

14' Clear

MISC:

Sprinklers, gas, and separate meters

TRANSPORTATION:

Easy access to NYST—
I-87, Cross Westchester
Expressway—I-287,
Saw Mill River & Sprain
Parkways, Rte 9A and Bus

NEIGHBORHOOD:

Convenient to hotels,
restaurants, local shopping
and services

CONTACT:

William Anson
914.968.8500 ext 329

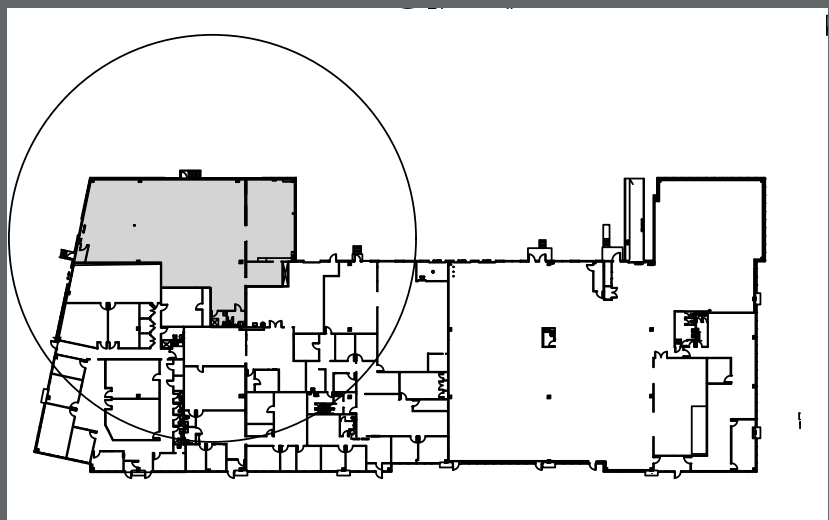
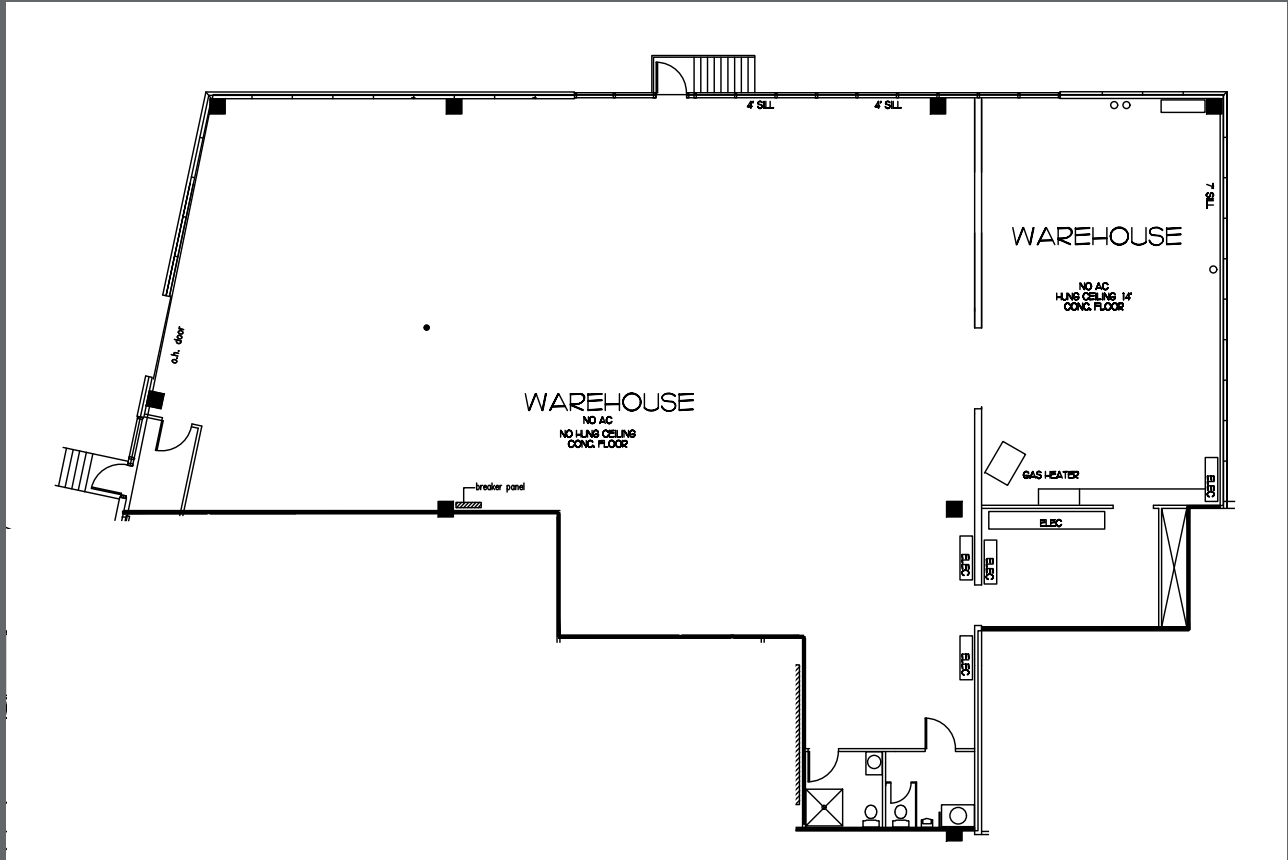
Kevin Langtry
914.968.8500 ext 322



5,450 RSF | AVAILABLE SUMMER 2026

CROSS WESTCHESTER EXECUTIVE PARK

500 Executive Blvd, Elmsford, NY



CONTACT:

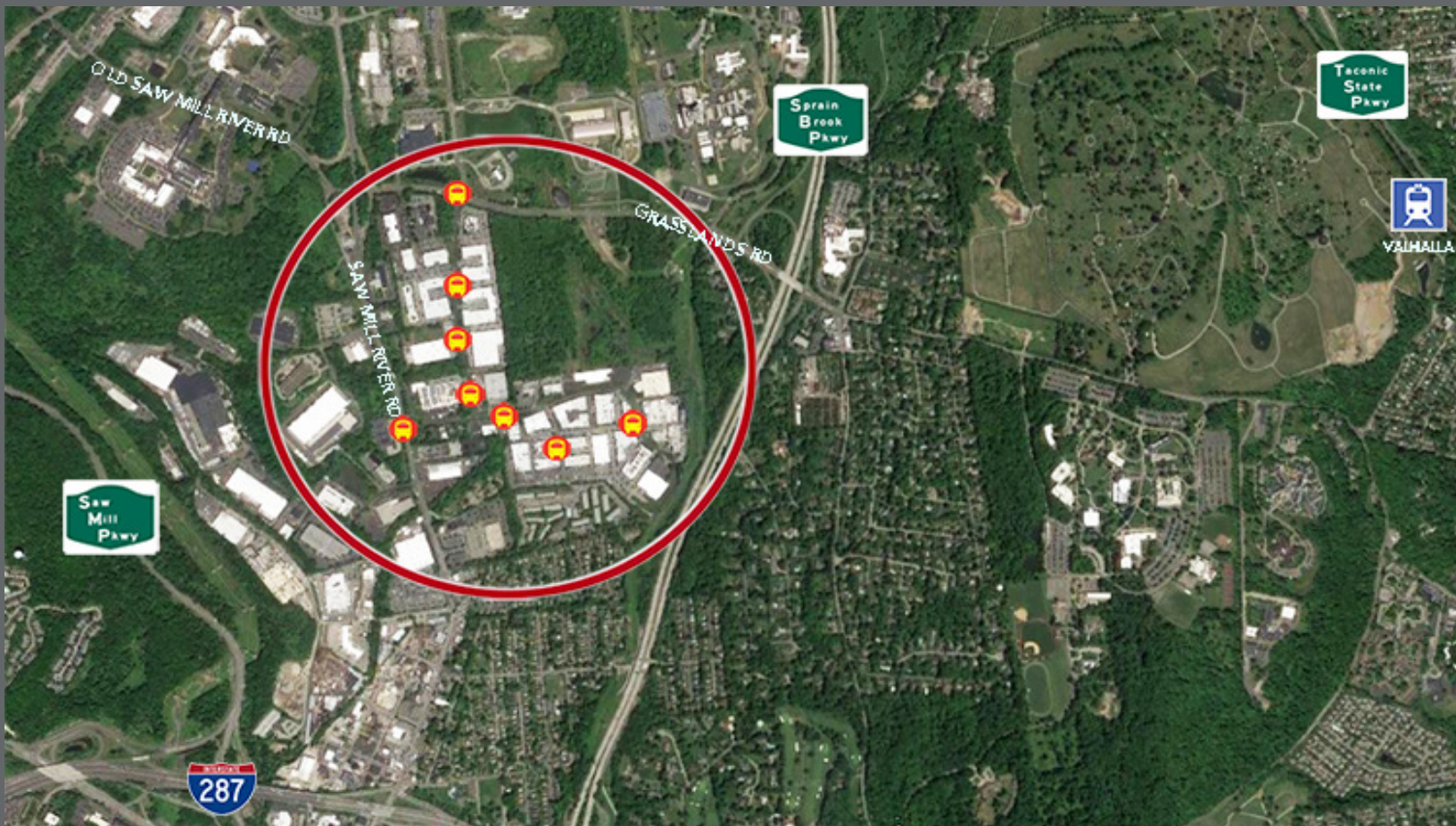
William Anson
914.968.8500 ext 329

Kevin Langtry
914.968.8500 ext 322

5,450 RSF | AVAILABLE SUMMER 2026

CROSS WESTCHESTER EXECUTIVE PARK

500 Executive Blvd, Elmsford, NY



CONTACT EXCLUSIVE LISTING AGENTS

William Anson
wanson@rmfriedland.com
914.968.8500 ext 329

Kevin Langtry
klangtry@rmfriedland.com
914.968.8500 ext 322

RM FRIEDLAND

COMMERCIAL REAL ESTATE SERVICES

440 Mamaroneck Ave | Harrison, NY 10528 | rmfriedland.com | 914.968.8500

All information contained herein is based upon information which we consider reliable, but because it has been supplied by third parties, we cannot represent that it is accurate or complete, and it should not be relied upon as such. The offerings are subject to errors, omissions, changes, including price, or withdrawal without notice. The content is provided without warranties of any kind, either express or implied. RM Friedland, LLC, its agents or employees shall not be held liable to anyone for any errors, omissions or inaccuracies under any circumstances. You and your advisors should conduct a careful, independent examination of the property to determine to your satisfaction the suitability of the property for your needs.