

PRICED REDUCED!



FOR SALE

1929 GATEWAY CIRCLE

GROVE CITY, OH

Michelle Fude SIOR CCIM

Senior Vice President & Partner
+1 614 398 9292
michelle.fude@alliedre.com

Daniel Dunsmoor SIOR

Managing Partner
+1 614 352 3556
dan.dunsmoor@alliedre.com

Ryan McHugh

Vice President
+1 614 940 2978
ryan.mchugh@alliedre.com



Building Highlights

1929 Gateway Circle is a 16,000 SF office building with direct visibility from I-71. The property is located immediately off of the Stringtown Rd exit in Grove City, offering easy access. There are also abundant amenities within close proximity, including many restaurants and retailers. The property is situated on a large parcel with ample parking.

Additional highlights include:



Easy access to and from Stringtown Road



Single-story standalone building in the tight Grove City submarket



86 parking spaces on-site



Large parcel on 2.03 acres



Visibility to 92,000 vehicles per day on I-71

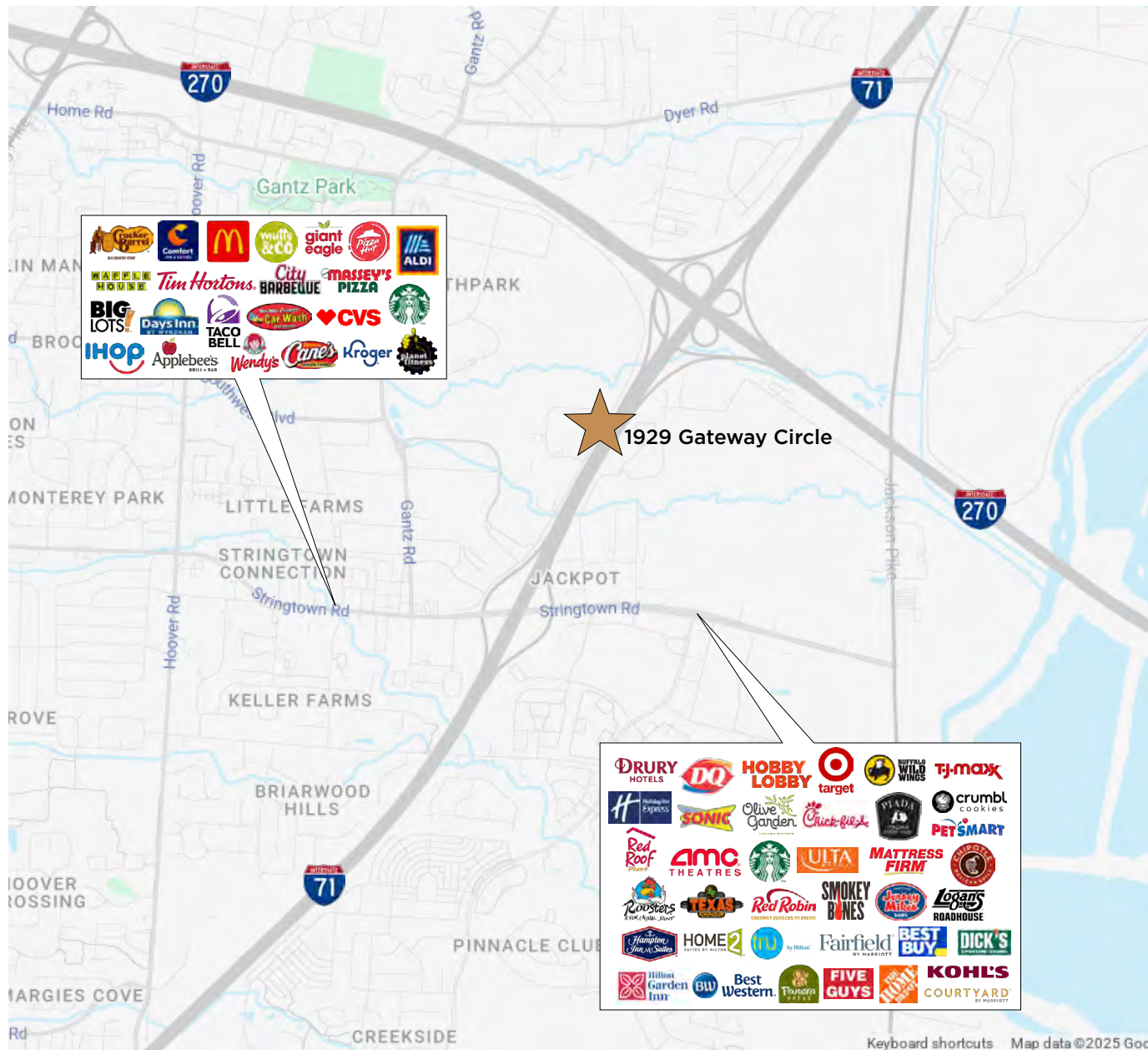


Abundant amenities in close proximity

Sale Price: \$2,750,000



Nearby Amenities



Nearby Amenities

Shopping:

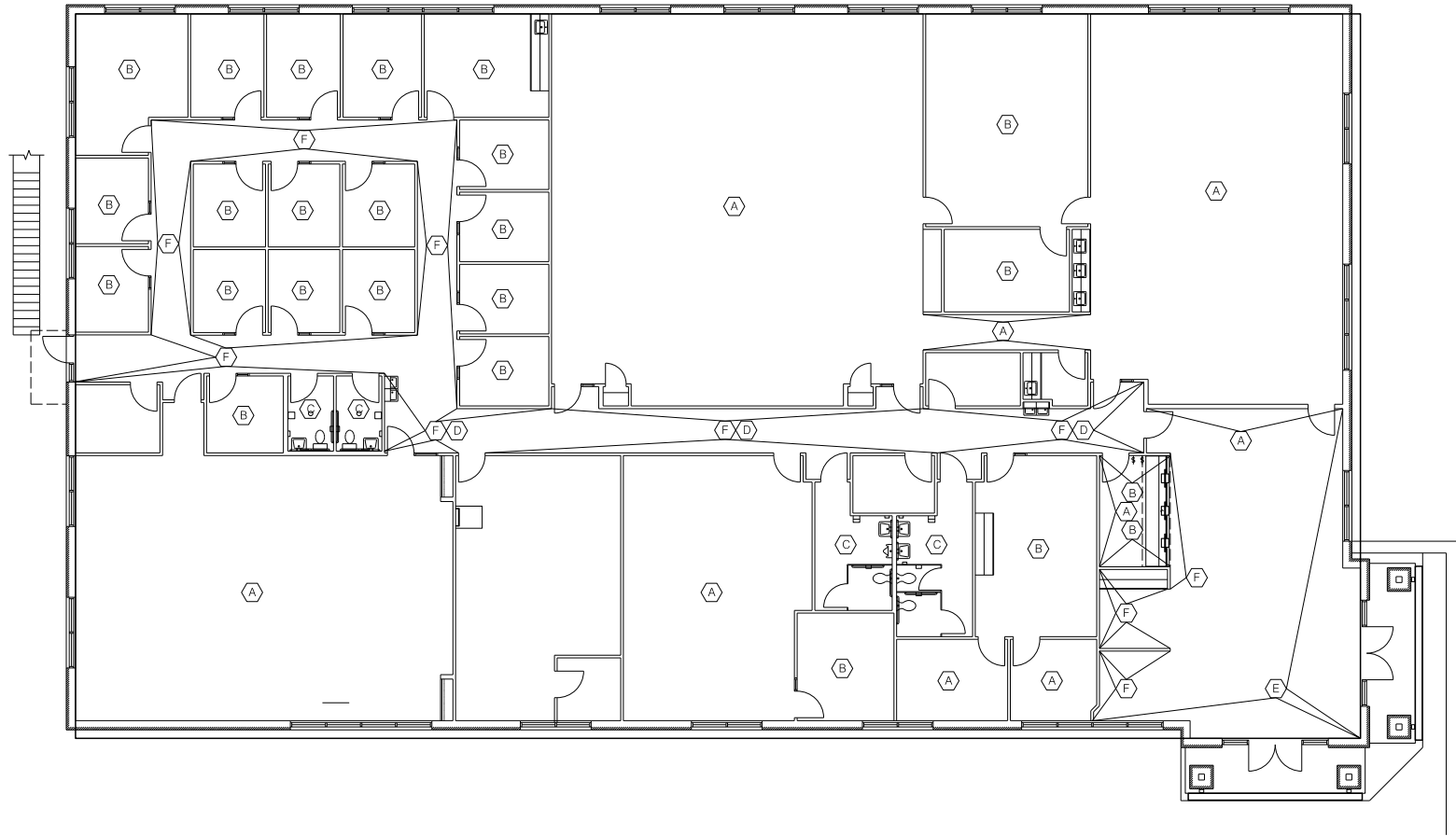
- Target
- Wal-Mart
- Dick's Sporting Goods
- HomeDepot
- Kohl's
- TJ Maxx
- Five Below
- Ulta
- PetSmart
- Giant Eagle
- Best Buy
- Bath & Body Works
- Hobby Lobby

Restaurants:

- Pizza Cottage
- Rooster's
- Texas Roadhouse
- Fiesta Mariachi
- Applebee's
- Longhorn
- Olive Garden
- Starbucks
- Chipotle
- Panera
- Five Guys
- Jersey Mikes
- Raising Cane's
- Red Robin
- Chick-fil-A

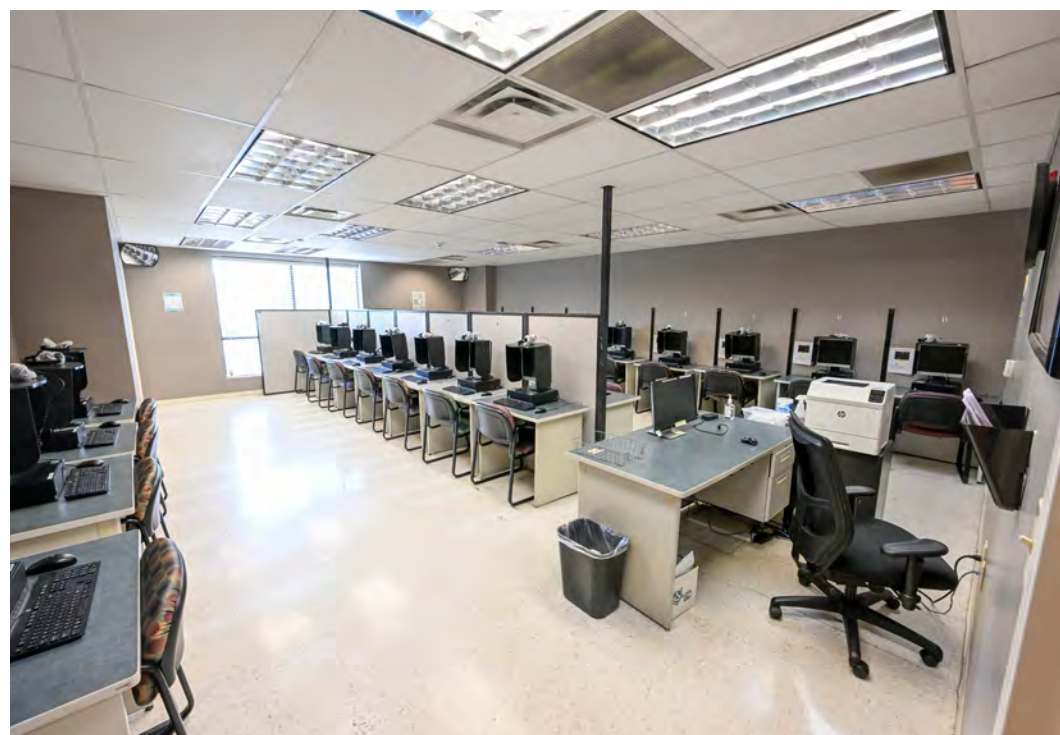
Floor Plan*

First Floor - 11,970 SF



[Click here](#) or scan QR code for a 360-degree property tour.

**Additional 4,030 SF in Lower Level*







Allied Real Estate Advisors

500 S Front St, Suite 980
Columbus, OH 43215
614 380 1660

Ohio State Cosmetology
and Barber Board

Ohio State Cosmetology
and Barber Board

Michelle Fude SIOR CCIM

Senior Vice President & Partner
+1 614 398 9292
michelle.fude@alliedre.com

Daniel Dunsmoor SIOR

Managing Partner
+1 614 352 3556
dan.dunsmoor@alliedre.com

Ryan McHugh

Vice President
+1 614 940 2978
ryan.mchugh@alliedre.com

Copyright © 2025 Allied Real Estate Advisors. This document has been prepared by Allied Real Estate Advisors for advertising and general information only. Allied makes no guarantees, representations or warranties of any kind, expressed or implied, regarding the information including, but not limited to, warranties of content, accuracy and reliability. Any interested party should undertake their own inquiries as to the accuracy of the information. Allied excludes unequivocally all inferred or implied terms, conditions and warranties arising out of this document and excludes all liability for loss and damages arising there from.