



For Sale
or Lease

CONTACT**Tony DiDio**

Senior Vice President
+1 609 820 5900
tony.didio@colliers.com

Colliers

250 Century Parkway, Suite 100
Mount Laurel, NJ 08054
+1 856 234 9300

View online at
colliers.com/p-usa1150578

615 West Delilah Road Pleasantville, New Jersey

25,440 SF flex warehouse located within Atlantic County's Urban Enterprise Zone

- **Building Size** 25,440 SF
- **Lot Size** 1.99 AC
- **Ceiling Height** 20'-24' clear
- **Loading** 1 tailgate dock, 4 drive-in doors
- **Zoning** Urban Enterprise Zone (UEZ)

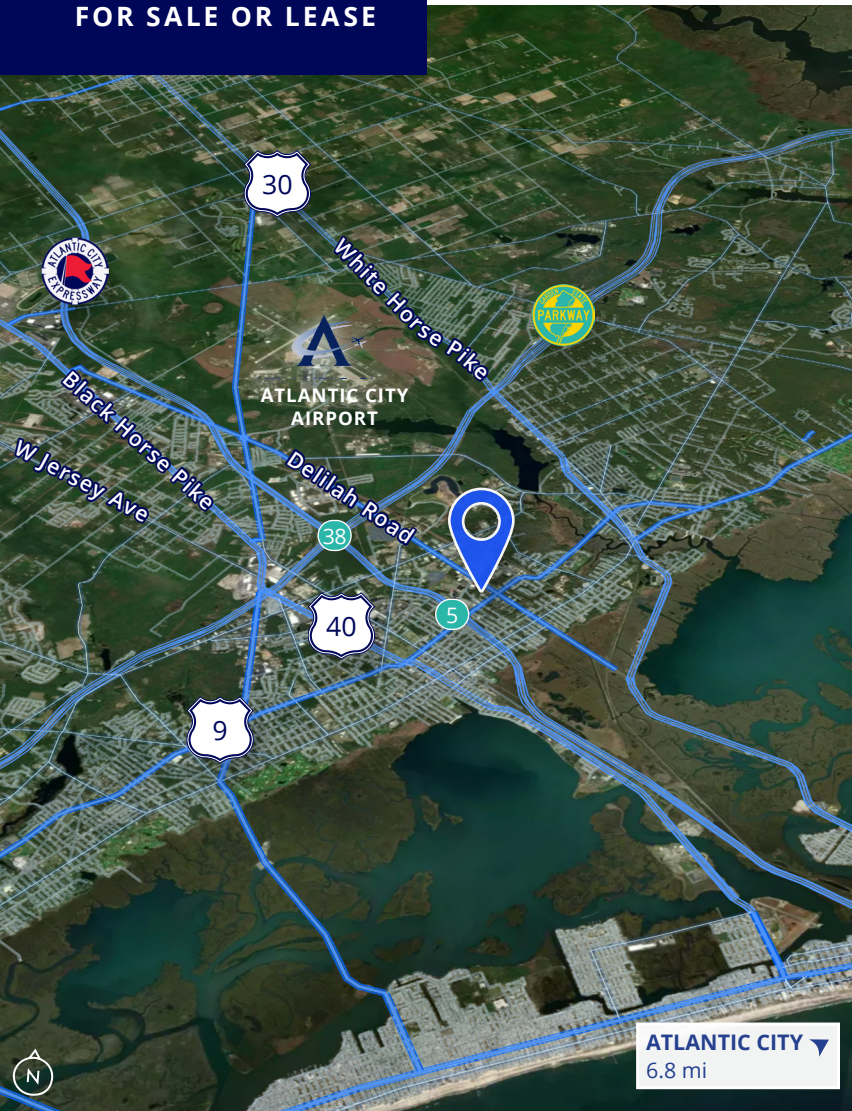
This document/email has been prepared by Colliers for advertising and general information only. Colliers makes no guarantees, representations or warranties of any kind, expressed or implied, regarding the information including, but not limited to, warranties of content, accuracy and reliability. Any interested party should undertake their own inquiries as to the accuracy of the information. Colliers excludes unequivocally all inferred or implied terms, conditions and warranties arising out of this document and excludes all liability for loss and damages arising there from. This publication is the copyrighted property of Colliers and /or its licensor(s). © 2026. All rights reserved. This communication is not intended to cause or induce breach of an existing listing agreement.

FOR SALE OR LEASE

615 West Delilah Road
Pleasantville, New Jersey

Benefit from **direct access to Route 9**, just minutes from ACE, GSP, and U.S. Route 40

| | |
|---------------------------------|------------------|
| U.S. Route 9 | Immediate access |
| Garden State Parkway | 5 minutes |
| U.S. Route 40 | 5 minutes |
| Atlantic City Expressway | 5 minutes |
| Atlantic City Airport | 11 minutes |



CONTACT

Tony DiDio

Senior Vice President
+1 609 820 5900
tony.didio@colliers.com

Colliers

250 Century Parkway, Suite 100
Mount Laurel, NJ 08054
+1 856 234 9300

View online at
colliers.com/p-usa1150578

Location

