

# hue 39

GLENDALE, CALIFORNIA



RETAIL / RESTAURANT / OFFICE / MEDICAL  
SPACE AVAILABLE



±948-3,318 SF AVAILABLE ACROSS FROM DIGNITY  
HEALTH GLENDALE MEMORIAL HOSPITAL



CLICK FOR  
VIRTUAL TOUR

# EXECUTIVE SUMMARY

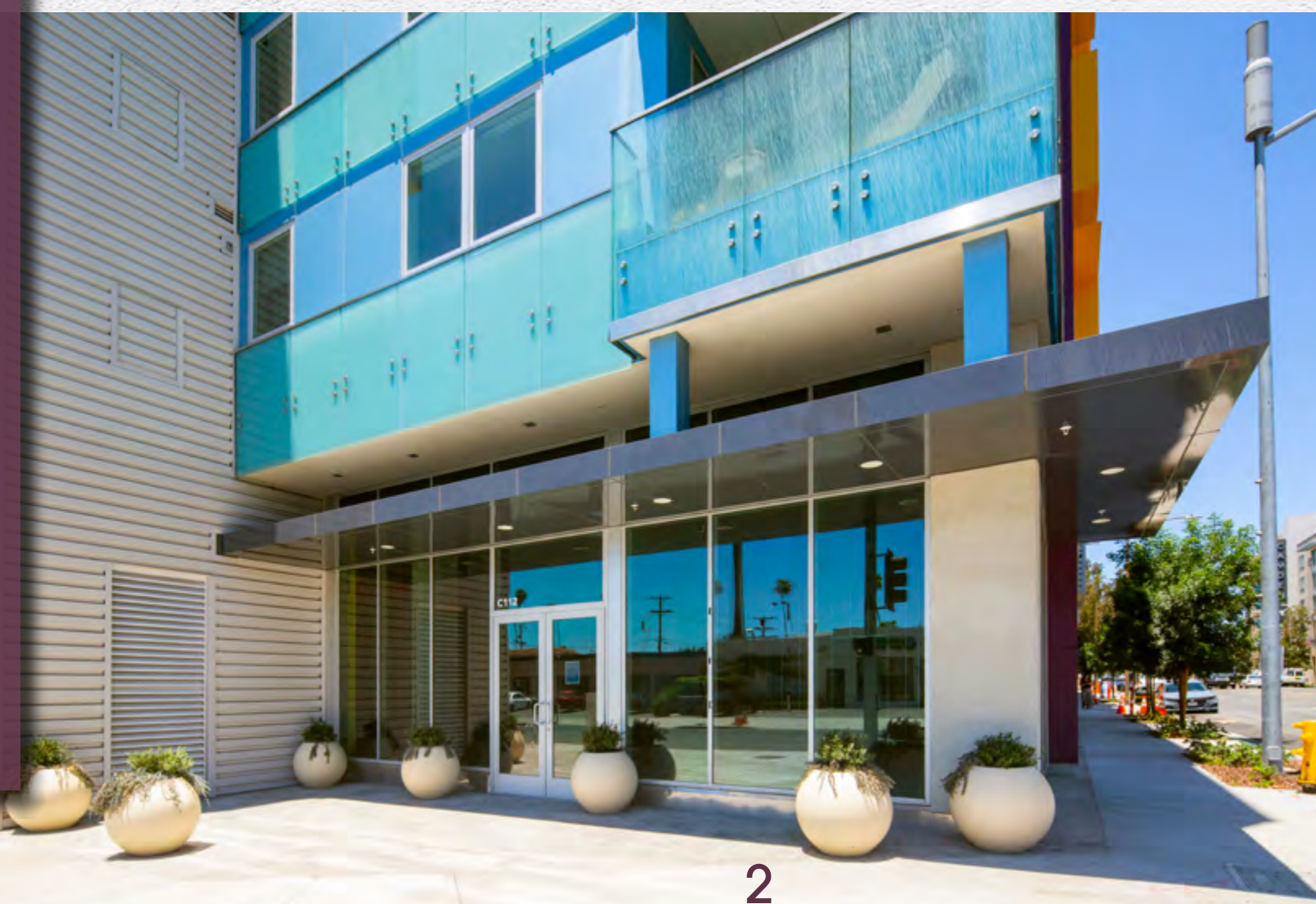
Pegasus is pleased to present an exceptional opportunity to lease prime retail/restaurant space at Hue39, a brand-new mixed-use building in the highly desirable city of Glendale, California. Superbly located squarely between downtown Glendale, Atwater Village and Los Feliz, Hue39 offers ±948-3,318 SF of street-fronting retail space beneath 143 brand-new apartment units. In addition, ample on-grade and subterranean parking is available directly from San Fernando Rd.

Hue39 sits prominently on Glendale's primary N San Fernando Road thoroughfare (±35,000 vehicles per day) and is walking distance from Glendale Memorial Hospital (operated by Dignity Health). One block to the north is Los Feliz Blvd, the primary artery connecting south Glendale to the rest of Los Angeles. Los Feliz Blvd features a significant retail presence anchored by a large Costco and Best Buy-anchored shopping center.

Atwater Village, a few minutes south, has become an exceptionally attractive neighborhood for both residents and tourists in recent years, having sprouted a multitude of trendy and unique destination retail shops and restaurants along its Glendale Blvd stretch.

Hue39 is minutes from CA Highway 2 and Interstate 5, both accessible from San Fernando Rd and Los Feliz Blvd, respectively. Local demographics are strong, with a population of 264,000 and an average household income of \$99,579 within 3 miles.

Take advantage of this rare leasing opportunity in one of Los Angeles' most prime neighborhoods while it lasts!



CENTRALLY LOCATED BETWEEN DOWNTOWN  
GLENDALE, LOS FELIZ, AND ATWATER VILLAGE

GRIFFITH PARK

BURBANK



GRIFFITH APARTMENTS  
220 APARTMENT UNITS

Dollar King

VONS

LOS FELIZ BLVD



CAMDEN GLENDALE  
307 APARTMENT UNITS

S CENTRAL AVE

SAN FERNANDO RD  
±35,000 VPD



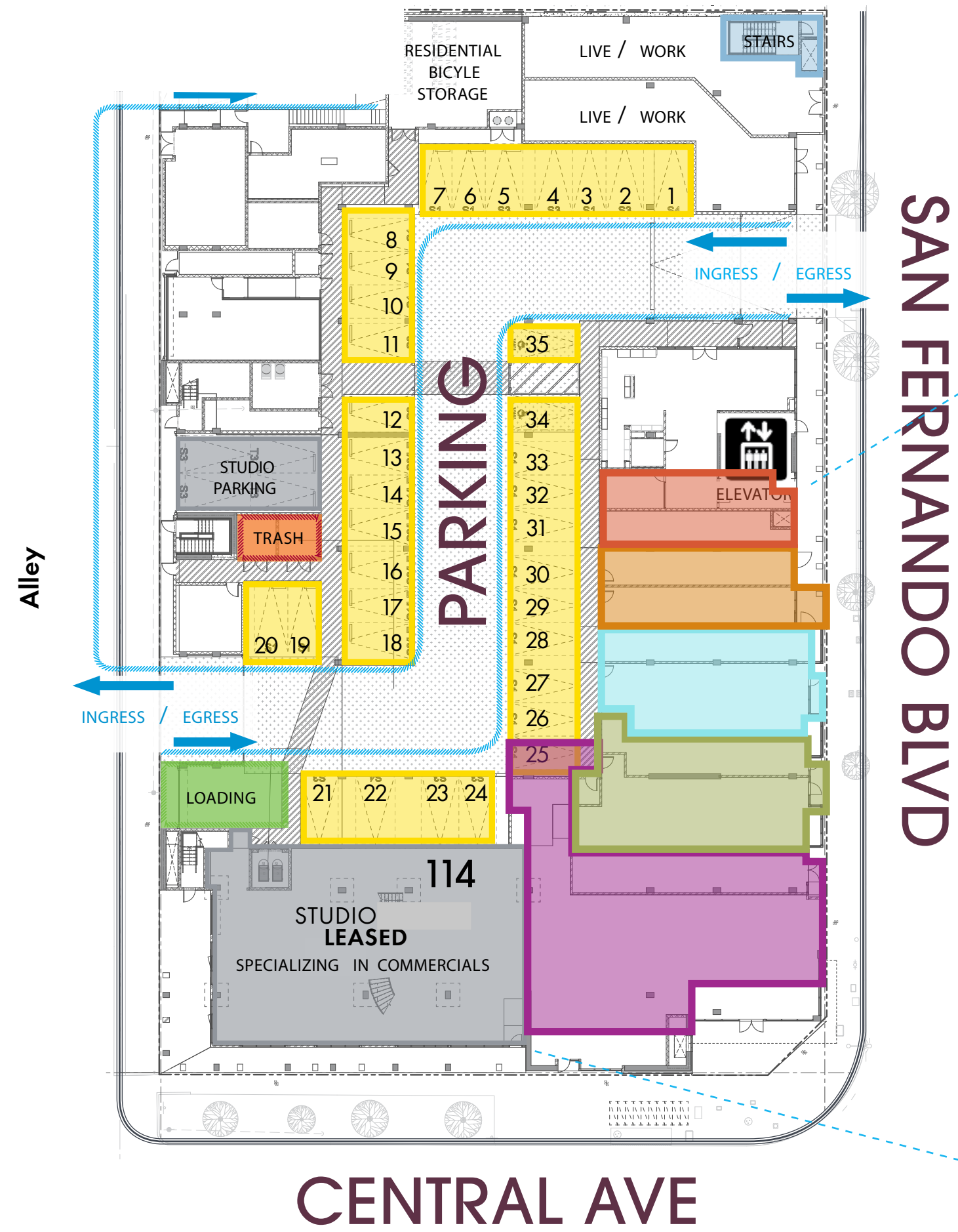


## AVAILABLE SPACES

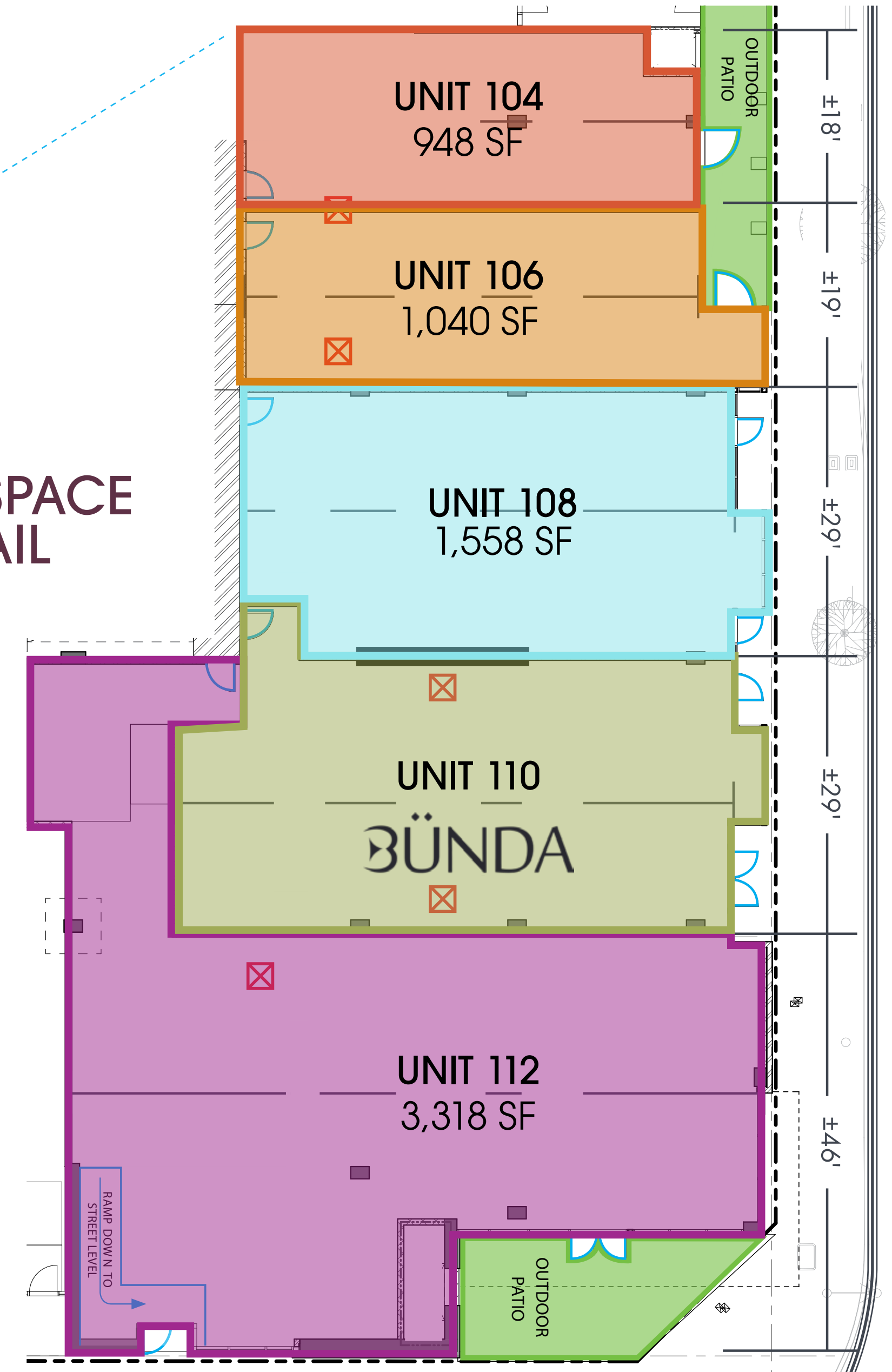
UNIT	SIZE	USE	BUILD OUT	DELIVERY	FRONTAGE	AVAILABILITY	LEASE TERM/RATE
UNIT 112	3,318 SF	RETAIL/RESTAURANT/OFFICE	FULL BUILD OUT	WARM SHELL	110 FT	IMMEDIATE	NEGOTIABLE
UNIT 108	1,558 SF	RETAIL/RESTAURANT/OFFICE	FULL BUILD OUT	WARM SHELL	29 FT	IMMEDIATE	NEGOTIABLE
UNIT 106	1,040 SF	RETAIL/RESTAURANT/OFFICE	FULL BUILD OUT	WARM SHELL	19 FT	IMMEDIATE	NEGOTIABLE
UNIT 104	948 SF	RETAIL/RESTAURANT/OFFICE	FULL BUILD OUT	WARM SHELL	18 FT	IMMEDIATE	NEGOTIABLE

ADJOINING SPACES MAY BE COMBINED - CONTACT BROKER FOR DETAILS

# FIRST FLOOR PLAN



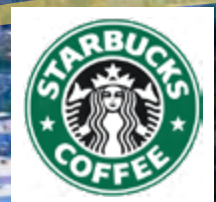
# RETAIL SPACE DETAIL



DOWNTOWN LOS ANGELES



hue 39



SAN FERNANDO RD  
±35,000 VPD



S CENTRAL AVE



# HIGHLIGHTS

- ±948-3,318 SF Brand-new street-fronting retail/ restaurant/office space below 143 apartment units
- Directly visible to ±35,000 VPD on San Fernando Road, a primary Glendale thoroughfare
- Directly across the street from Dignity Health Glendale Memorial Hospital – 1,500+ Employees
- Locality to top LA neighborhoods: minutes from downtown Glendale, Los Feliz, and Atwater Village, approximately 15 minutes from Downtown Los Angeles
- Strong local demographics: 257,055 with average household income of \$104k+ within 3 miles
- Covered on-grade and subterranean parking directly behind the retail space

DIRECTLY ACROSS THE STREET FROM DIGNITY  
HEALTH GLENDALE MEMORIAL HOSPITAL  
1,500+ EMPLOYEES

DOWNTOWN GLENDALE



VONS



GRIFFITH APARTMENTS  
220 APARTMENT UNITS

CAMDEN GLENDALE  
307 APARTMENT UNITS

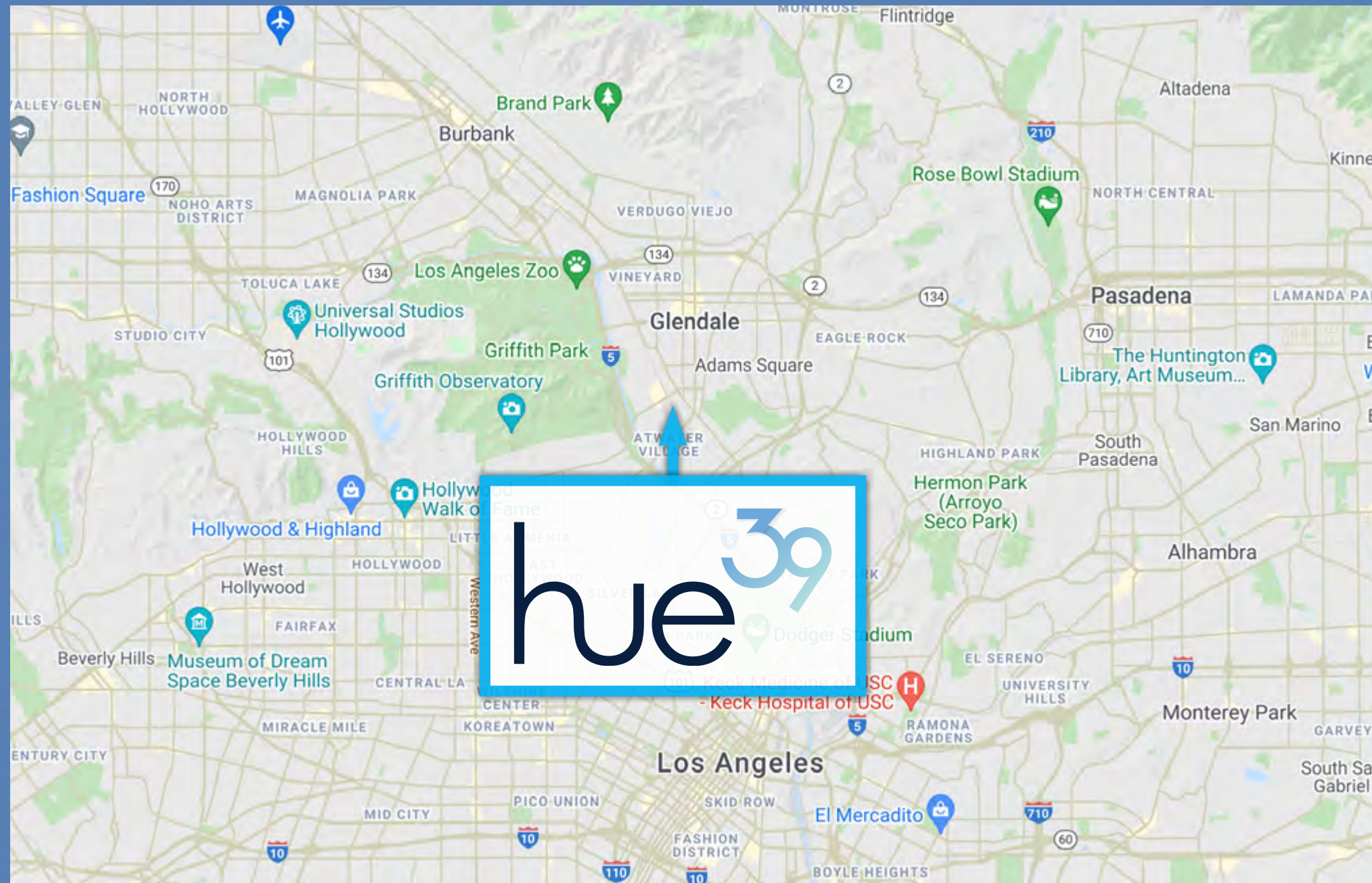


SAN FERNANDO RD ±35,000 VPD

S CENTRAL AVE







## ABOUT GLENDALE, CALIFORNIA

Glendale is a city of 196,500 directly north of downtown Los Angeles. Flanked by Griffith Park to the southwest and the Verdugo mountains to the north, Glendale is one of the best places to live in California, offering its residents an ideal mix of urban and suburban surrounded by natural beauty. Situated near Burbank and Hollywood, it offers a less hectic corner of Los Angeles for both work and play, and within a short commute to major employers such as Disney/ABC, Warner Bros and NBC Universal.

The city offers multiple locales for a variety of lifestyles. The local population centers around young professionals and affluent older families. Downtown Glendale offers a highly walkable selection of bars, restaurants, coffee shops, and parks, and Atwater Village to the south is a diverse and eclectic gateway to the hustle and bustle of Los Angeles.

## DEMOGRAPHICS

POPULATION			HOUSEHOLDS			AVG. HOUSEHOLD INCOME		
1-MILE	2-MILE	3-MILE	1-MILE	2-MILE	3-MILE	1-MILE	2-MILE	3-MILE
35,185	135,566	257,055	12,715	51,461	99,917	\$84,813	\$97,391	\$104,186

## LEASING TEAM

### ANDREW COHEN

EXECUTIVE VICE PRESIDENT - LEASING

424.363.7800  
ACOHEN@PEGASUSAM.COM  
LIC #01996379 (CA)

### EMMET PIERSON

SENIOR ASSOCIATE - LEASING

424.363.7800  
EPIERSON@PEGASUSAM.COM  
LIC #02048600 (CA)



PEGASUS ASSET MANAGEMENT INC.

1901 AVENUE OF THE STARS, SUITE 630  
LOS ANGELES, CA 90067  
PEGASUSAM.COM  
CA DRE LIC #02119442



#### CONFIDENTIALITY & DISCLAIMER STATEMENT

The information contained in this Leasing Package is proprietary and strictly confidential. It is intended to be reviewed only by the party receiving it from Pegasus Investments and should not be made available to any other person or entity without the written consent of Pegasus Investments. This Leasing Package has been prepared to provide summary, unverified information to prospective purchasers, and to establish only a preliminary level of interest in the subject property.

The information contained herein is not a substitute for a thorough due diligence investigation. Pegasus Investments has not made any investigation, and makes no warranty or representation, with respect to the income or expenses for the subject property, the future projected financial performance of the property, the size and square footage of the property and improvements, the presence or absence of contaminating substances, PCB's or asbestos, the compliance with State and Federal regulations, the physical condition of the improvements thereon, or the financial condition of the business prospects of any tenants, or any tenant's plans or intentions to continue its occupancy of the subject property.

The information contained in this Leasing Package has been obtained from sources we believe to be reliable; however, Pegasus Investments has not verified, and will not verify, any of the information contained herein, nor has Pegasus Investments conducted any investigation regarding these matters and makes no warranty or representation whatsoever regarding the accuracy or completeness of the information provided. Some or all of the photographs contained within may have been altered from their original format. All potential buyers must take appropriate measures to verify all of the information set forth herein.