

FOR LEASE



R.W. HOLMES
COMMERCIAL REAL ESTATE

321 Commonwealth Rd
Wayland | MA

Craig Johnston | 508-651-9022 | cjohnston@rwholmes.com

Garry Holmes | 508-651-9020 | gholmes@rwholmes.com

WAYLAND WOODS

321 Commonwealth Rd | Wayland, MA



SPECIFICATIONS

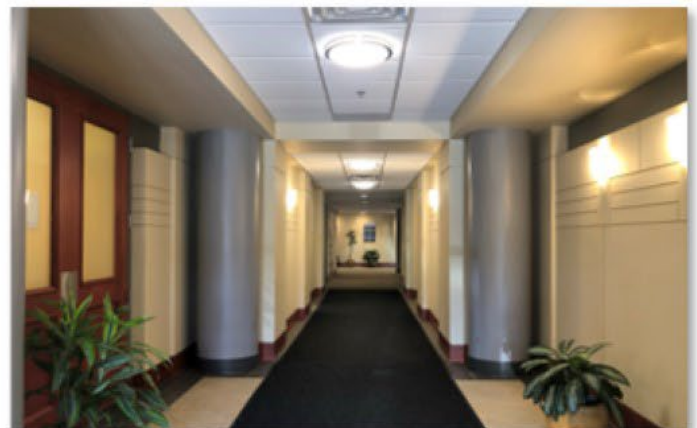
- 1,582 & 5,071 SF available
- Onsite management and daycare
- Walking distance to many amenities
- Minutes to Mass Pike & Route 128/95
- 1st Class Office Building
- Newly Renovated Lobby
- 3.2/1000 Parking
- **RENTAL RATE: \$23.50 SF + t.e.**

Amenities:

Walking distance to numerous restaurants, banks, grocery store, Starbucks, Dunkin' Donuts, and Einstein Bagel.

Notes:

Two miles from the second largest shopping district in Massachusetts, including the Natick Mall and Shoppers World. The property is located approximately 5 miles from Route 128 and 2 miles to the Mass Pike exchange.



For more information please contact:

Craig Johnston 508-651-9022, cjohnston@rwholmes.com

Garry Holmes 508-651-9020, gholmes@rwholmes.com

R.W. HOLMES
COMMERCIAL REAL ESTATE

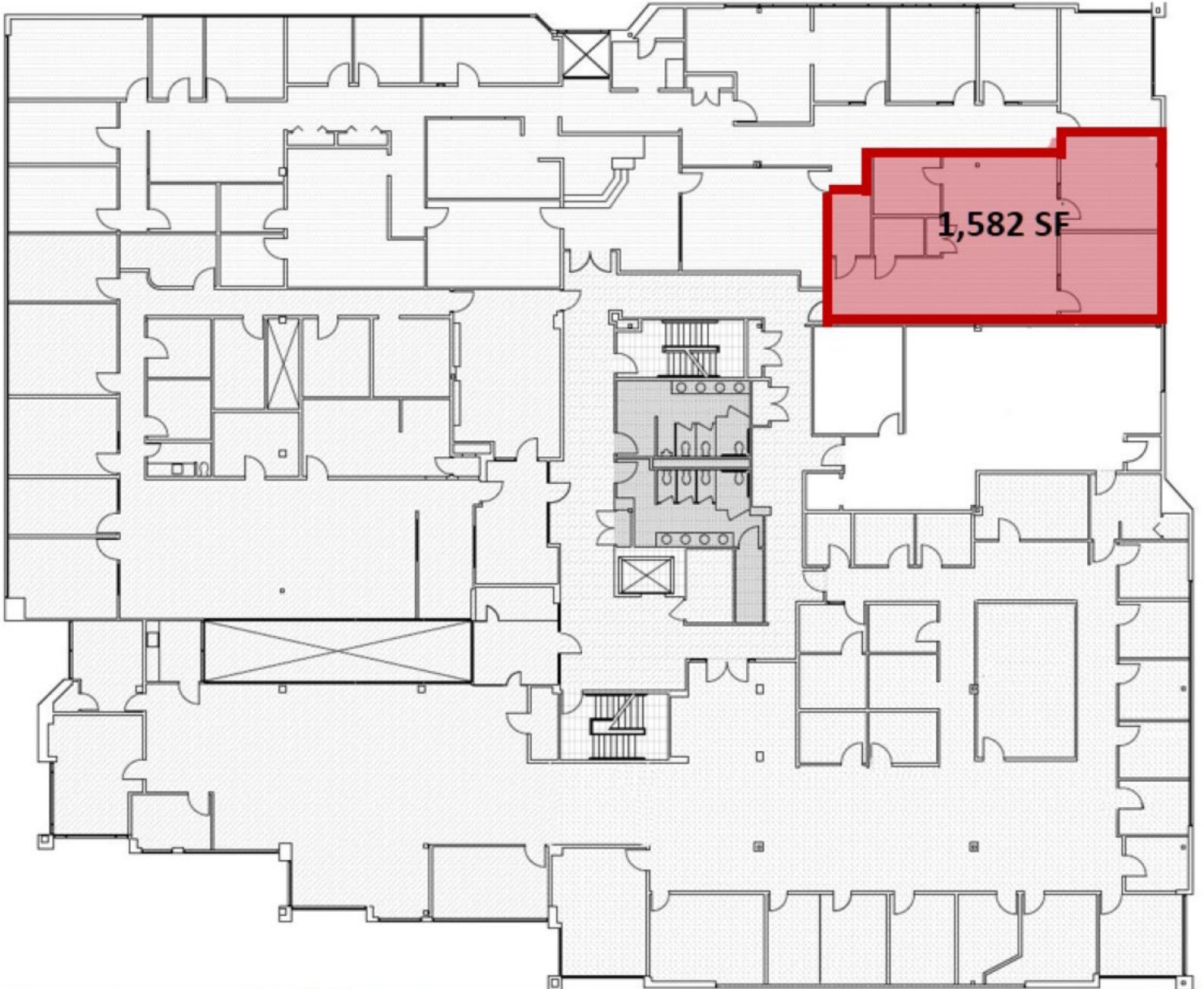
321 Commonwealth Road, Suite 202, Wayland, MA 01778 | Phone (508) 655-5626 www.rwholmes.com

All information furnished regarding property for sale, rental or financing is from sources deemed reliable. No representation is made as to the accuracy thereof and is submitted subject to errors, omissions, change of price, rental or other conditions, prior sale, lease or financing, or withdrawal without notice.

WAYLAND WOODS

321 Commonwealth Rd | Wayland, MA

2nd Floor



For more information please contact:

Craig Johnston 508-651-9022 cjohnston@rwholmes.com

Garry Holmes 508-651-9020 gholmes@rwholmes.com

R.W. HOLMES
COMMERCIAL REAL ESTATE

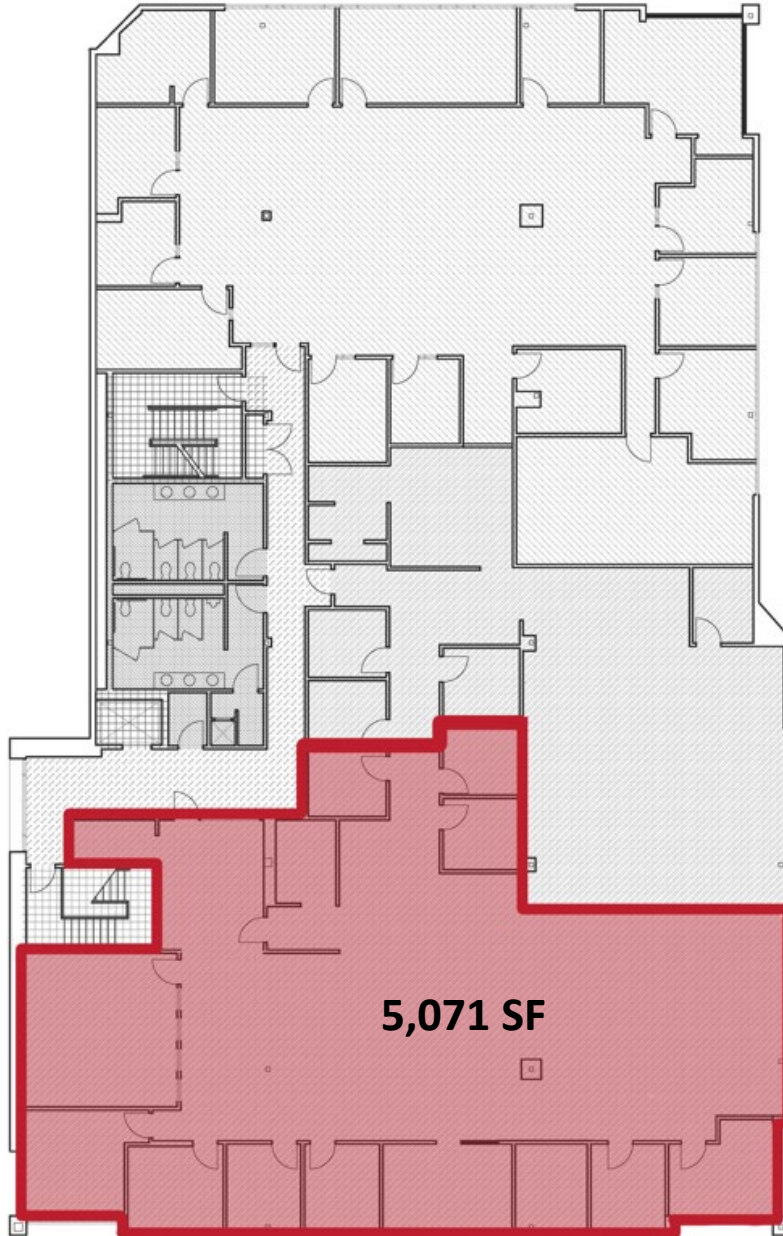
321 Commonwealth Road, Suite 202, Wayland, MA 01778 | Phone (508) 655-5626 www.rwholmes.com

All information furnished regarding property for sale, rental or financing is from sources deemed reliable. No representation is made as to the accuracy thereof and is submitted subject to errors, omissions, change of price, rental or other conditions, prior sale, lease or financing, or withdrawal without notice.

WAYLAND WOODS

321 Commonwealth Rd | Wayland, MA

3rd Floor



For more information please contact:

Craig Johnston 508-651-9022 cjohnston@rwholmes.com

Garry Holmes 508-651-9020 gholmes@rwholmes.com

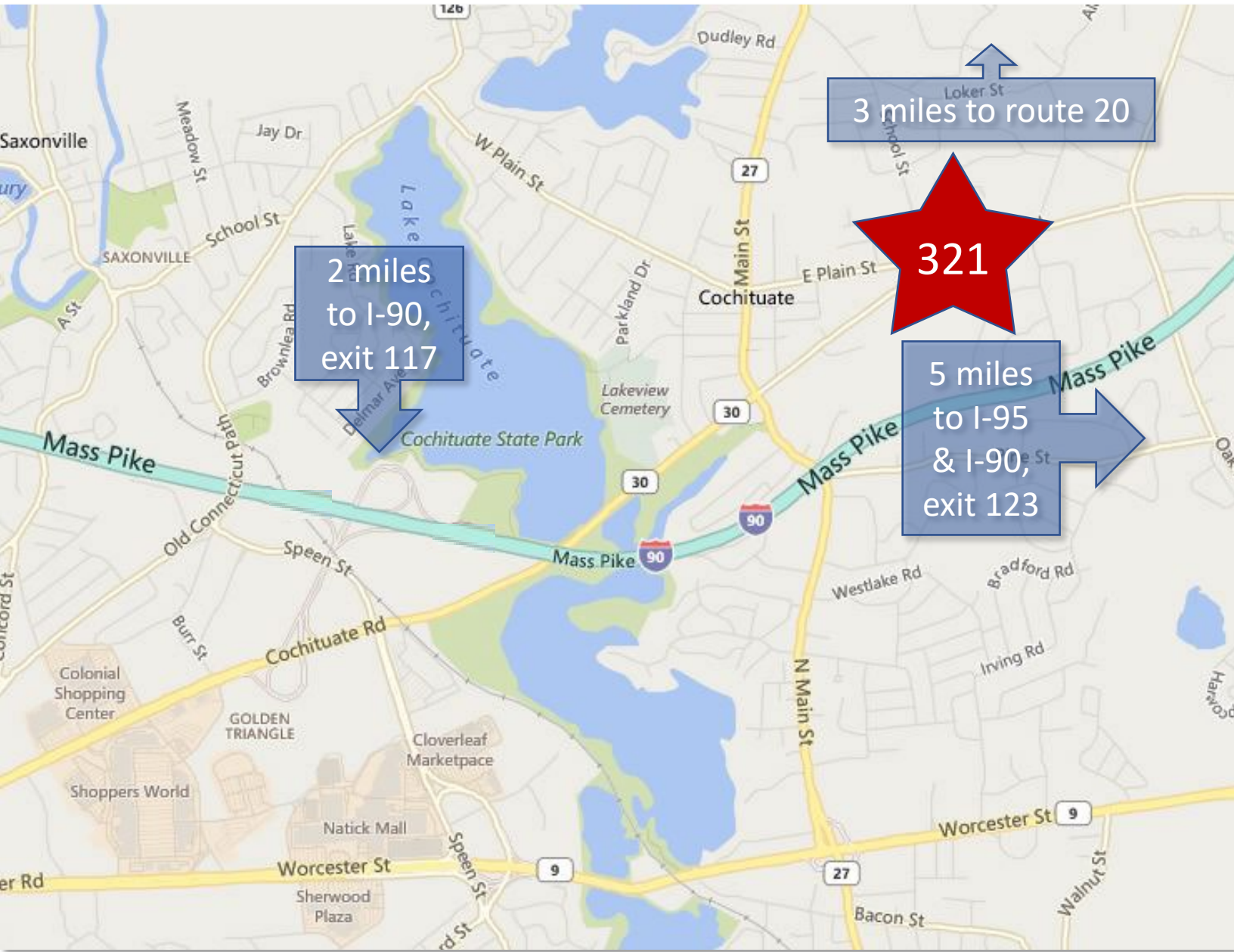
R.W. HOLMES
COMMERCIAL REAL ESTATE

321 Commonwealth Road, Suite 202, Wayland, MA 01778 | Phone (508) 655-5626 www.rwholmes.com

All information furnished regarding property for sale, rental or financing is from sources deemed reliable. No representation is made as to the accuracy thereof and is submitted subject to errors, omissions, change of price, rental or other conditions, prior sale, lease or financing, or withdrawal without notice.

WAYLAND WOODS

321 Commonwealth Rd | Wayland, MA



For more information please contact:

Craig Johnston 508-651-9022, cjohnston@rwholmes.com

Garry Holmes 508-651-9020, gholmes@rwholmes.com

R.W. HOLMES
COMMERCIAL REAL ESTATE

321 Commonwealth Road, Suite 202, Wayland, MA 01778 | Phone (508) 655-5626 www.rwholmes.com

All information furnished regarding property for sale, rental or financing is from sources deemed reliable. No representation is made as to the accuracy thereof and is submitted subject to errors, omissions, change of price, rental or other conditions, prior sale, lease or financing, or withdrawal without notice.