



\$20 psf NNNs

Leasing Opportunity

- 2,500 SF office space available
- Centrally located with direct access to parking
- Modified Gross lease
- 3-5 year term preferred
- Current layout includes seven private offices
- Close proximity to Oglethorpe Mall, several medical offices, Abercorn Street, and the Truman Parkway

For more information, please contact:

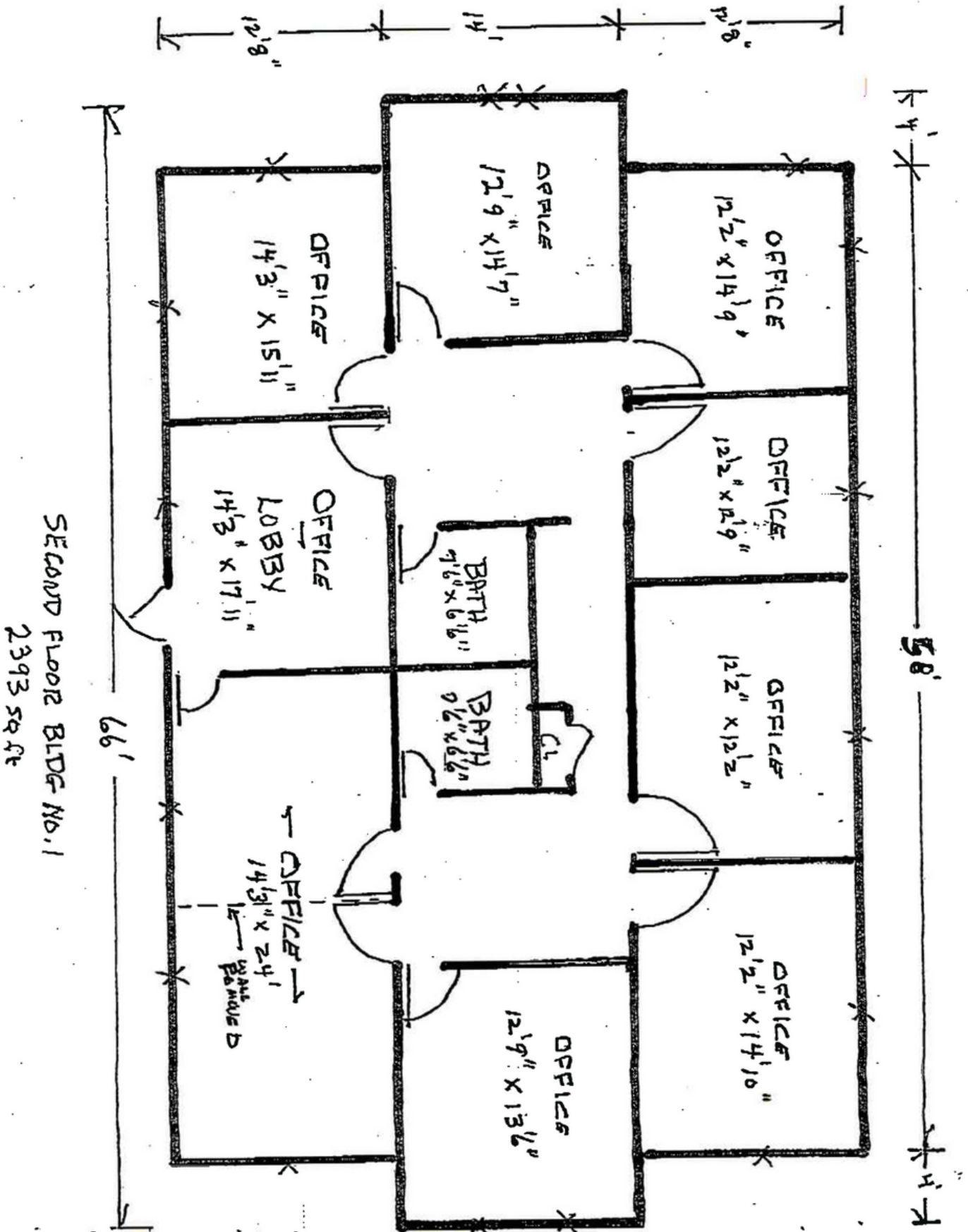


Mandy Henderson

Sales Director
cell: 970-778-5616
mandy@judgerealty.com

FLOOR PLANS

1149 CORNELL STREET







About Judge Commercial


Judge Commercial is the leader in Savannah Commercial Real Estate. We manage and lease over 500 properties in the Savannah area and work with local and national clients across the USA.


COMMERCIAL

RESIDENTIAL

PROPERTY MANAGEMENT

DEVELOPMENT

 345 Abercorn St.,
Savannah, GA 31401

 12-236-1000

 info@judgecommercial.com

 judgecommercial.com