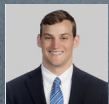


Industrial Space For Sublease

1585

Roadhaven Dr
Stone Mountain, GA 30083

48,000 SF
LED: March 31, 2033



Rhett Delk
rdelk@cresa.com
678.438.0537



Scott Polinski
spolinski@cresa.com
404.748.2633



Billy Hobbs
bhobbs@cresa.com
404.226.6444

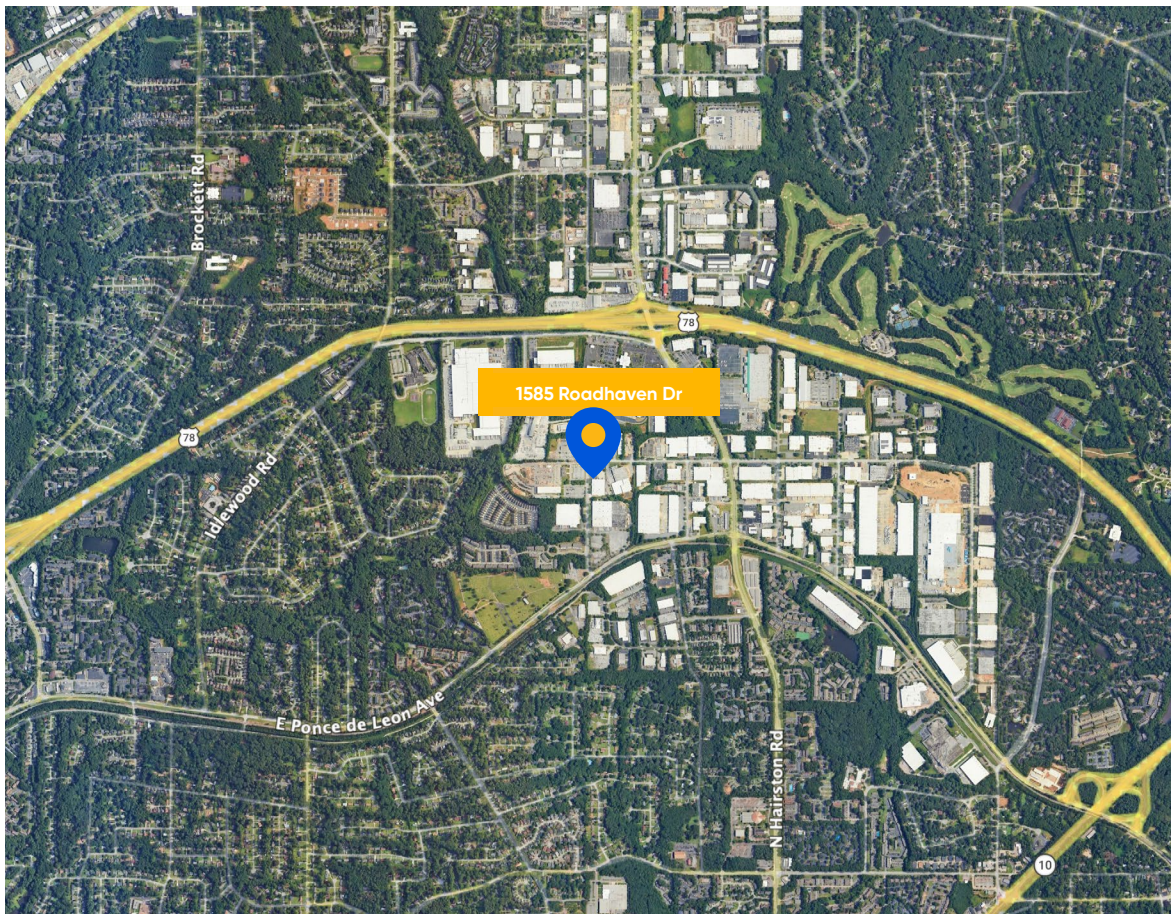
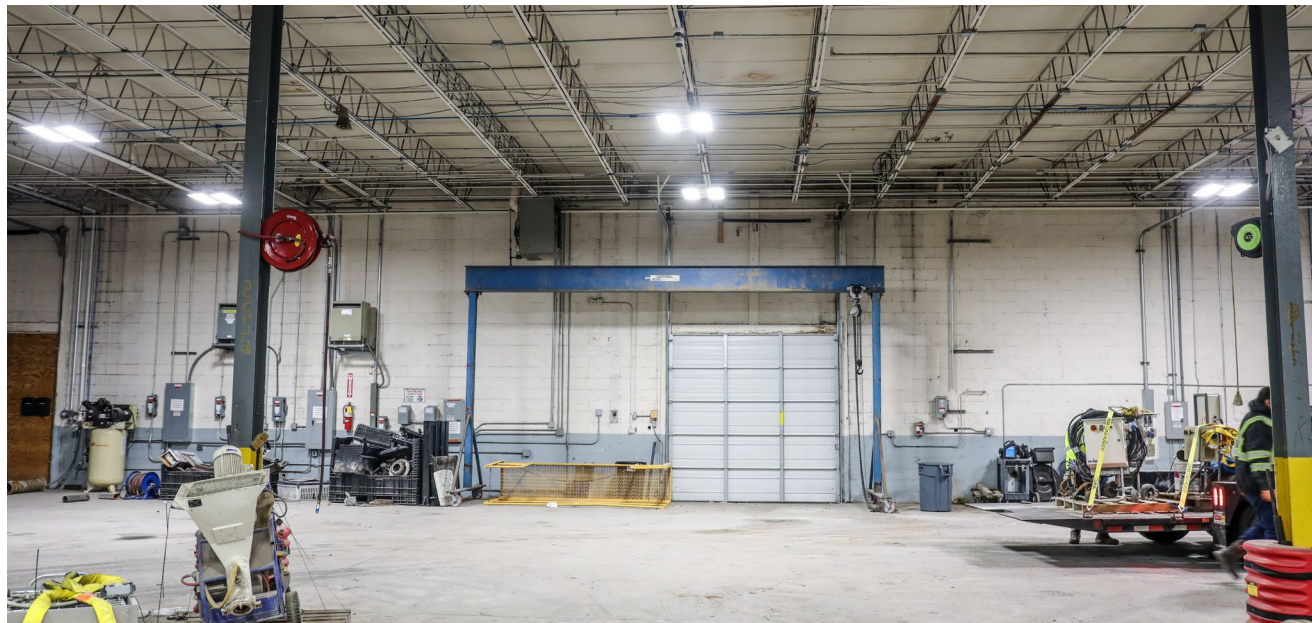
cresa

Property Highlights

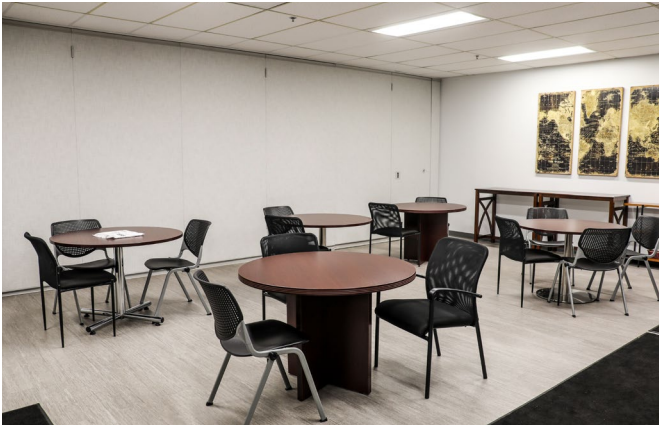
- 48,000 SF Total Building
- ±10,240 SF Office
- ± 3.78 AC Lot
- 18' Clear Height
- 2 Drive In Doors (28'W x 13'H)
- 7 Dock High Doors; 2 Pit Levelers
- Column Spacing: 40' x 25'
- 1.7 Acres for Parking/Truck Court/Outside Storage
- Power: 2,000 amps, 277/480v, 3 phase



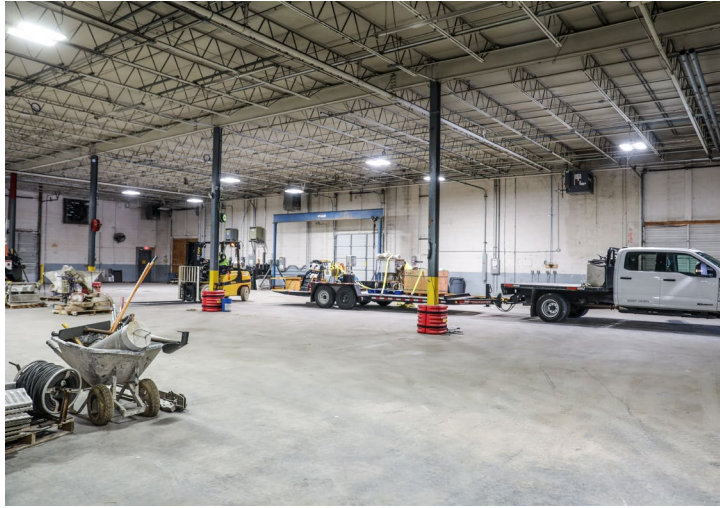
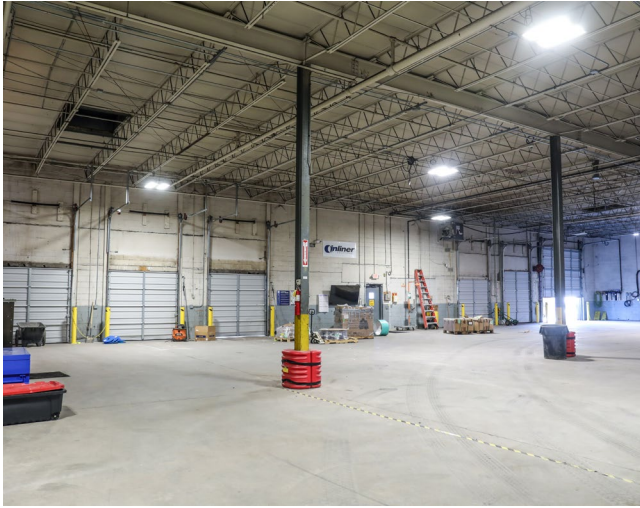
Located in the Stone Mountain industrial corridor, **1585 Roadhaven Drive** offers immediate access to I-285, I-20, and U.S. Highway 78, providing efficient connectivity throughout Metro Atlanta.



A versatile industrial facility in an established DeKalb County submarket, well-suited for distribution, light manufacturing, or service users seeking a strategically positioned location.





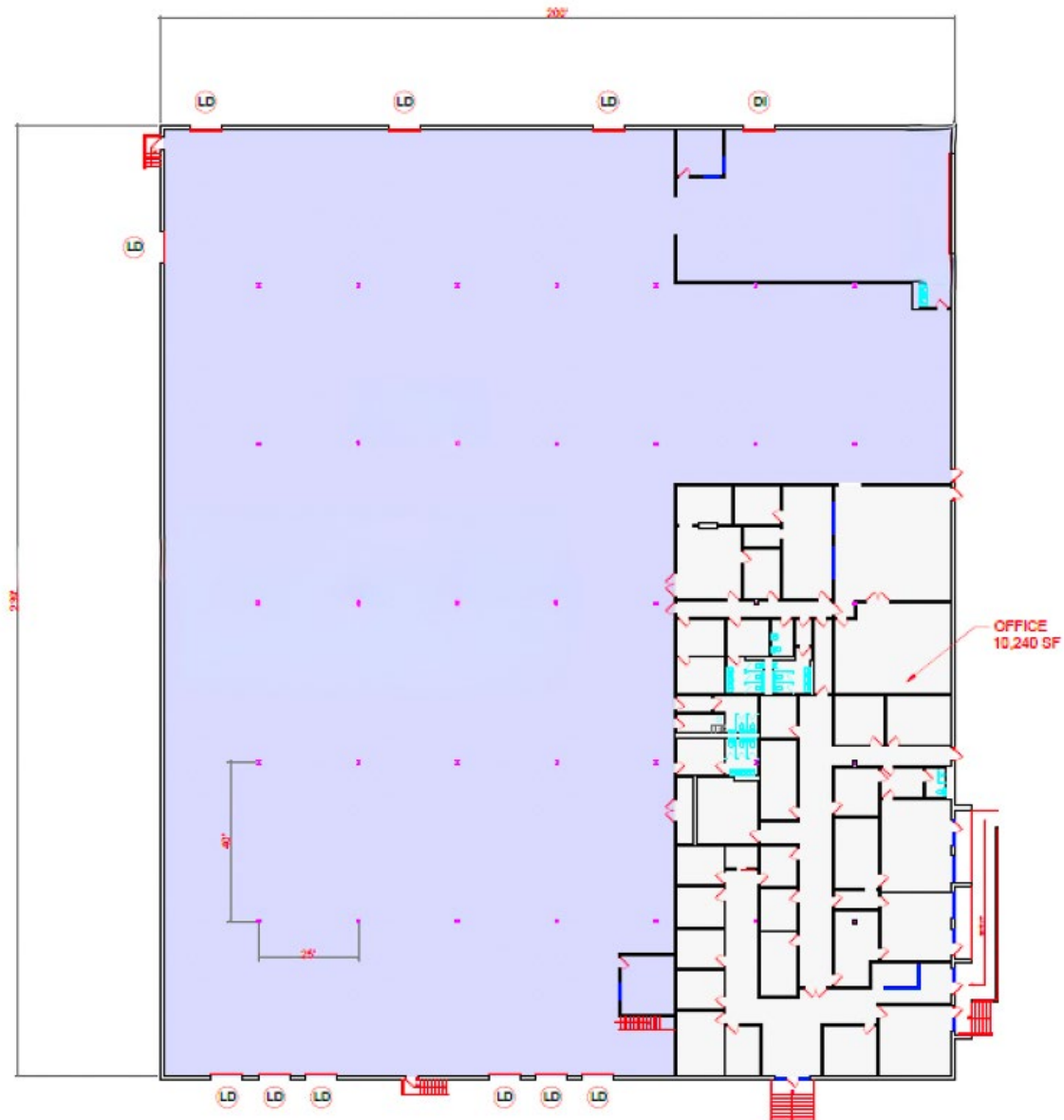


1585 Roadhaven DR

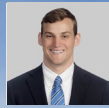
cresa...

± 3.78 AC Lot
± 1.7 AC Paved Area

Floor Plan



For More Information



Rhett Delk
rdelk@cresa.com
678.438.0537



Scott Polinski
spolinski@cresa.com
404.748.2633



Billy Hobbs
bhobbs@cresa.com
404.226.6444

1585

Roadhaven Dr
Stone Mountain, GA 30083

48,000 SF



Cresa © 2019. All rights reserved. The information contained in this document has been obtained from sources believed reliable. While Cresa does not doubt its accuracy, Cresa has not verified it and makes no guarantee, warranty, or representation about it. It is your responsibility to independently confirm its accuracy and completeness. Any projections, opinions, assumptions or estimates used are for example only and do not represent the current or future performance of the property. The value of this transaction to you depends on tax and other factors which should be evaluated by your tax, financial and legal advisors. You and your advisors should conduct a careful, independent investigation of the property to determine to your satisfaction the suitability of the property for your needs.

cresa