

## AVAILABLE SPACES FOR LEASE

**73 SF to 5,900 SF**  
**Retail & Restaurant Space Available**

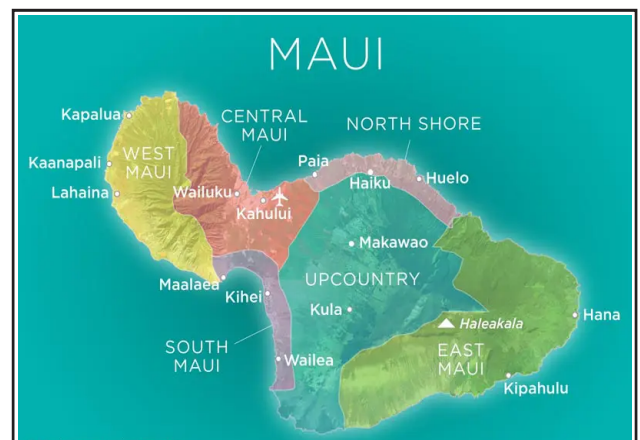


### RENTAL RATES

- Base Rent: \$8.00 - \$9.00/SF per month
- Advertising/Marketing: \$75 per month
- Flexible terms available
- Est CAM (2025): \$3.46 /SF per month

### PROPERTY FEATURES

- The center is comprised of over 50 retail shops & 14 restaurants/bars in the growing town of Kihei
- Tourist shopping destination
- On site storage facility (additional fee)
- On-site security team
- Great South Maui location in Kihei - popular area for locals and tourists



### DEMOGRAPHICS

Maui Island Population (2022 census):	154,100
South Kihei Population	27,921
Maui Households	57,355
Visitor arrival (2022)	2, 910,782

### FOR MORE INFORMATION, CONTACT:

EVAN J. KETTER (B)  
RB - 24112

OFFICE: (808) 879-5000

DIRECT: (808) 666-5398

CELL: (808) 421-9118

E-MAIL: [EKETTER@MWGROUP.COM](mailto:EKETTER@MWGROUP.COM)

*The information contained herein comes from sources deemed to be reliable; however, no representation or warranty is made by MW Commercial Realty, Inc. and said information is subject to change without notice. No subagency offered.*



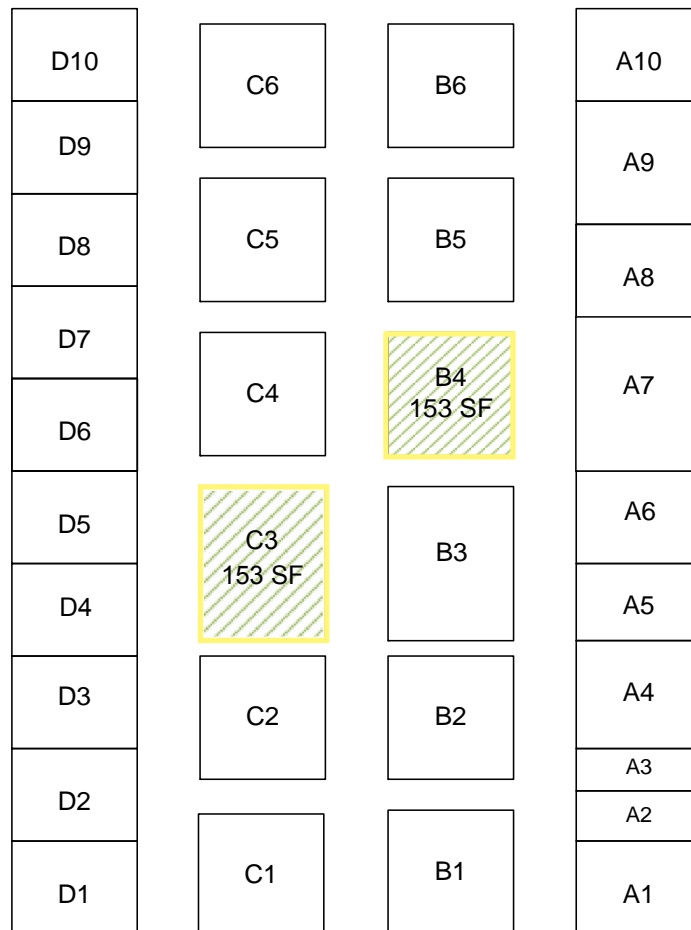
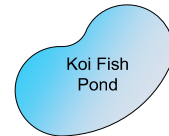
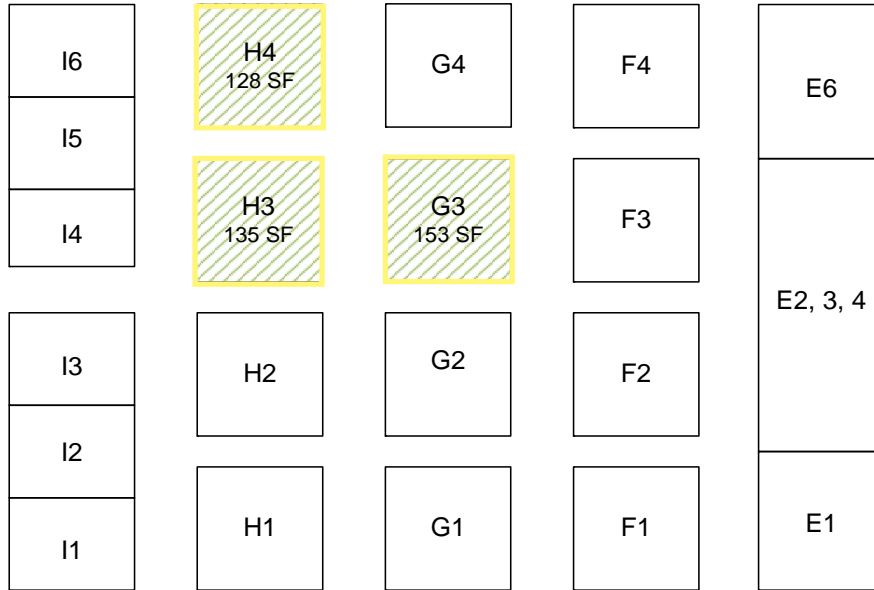
**MW Commercial  
Realty, Inc.**  
Real Estate Brokerage

1280 S. Kihei Road | Ste. 224 | Kihei, HI 96753  
P: (808) 879-5000 | F: (808) 879-3999 | Corp. Lic. # RB-16265  
[www.mwcommercialrealty.com](http://www.mwcommercialrealty.com)

# KIHEI KALAMA VILLAGE

## PAVILION MAP

1941 S. Kihei Rd., Kihei, HI 96753  
 TMK: (2) 3-9-003-007



The information contained herein comes from sources deemed to be reliable; however, no representation or warranty is made by MW Commercial Realty, Inc. and said information is subject to change without notice. No subagency offered.



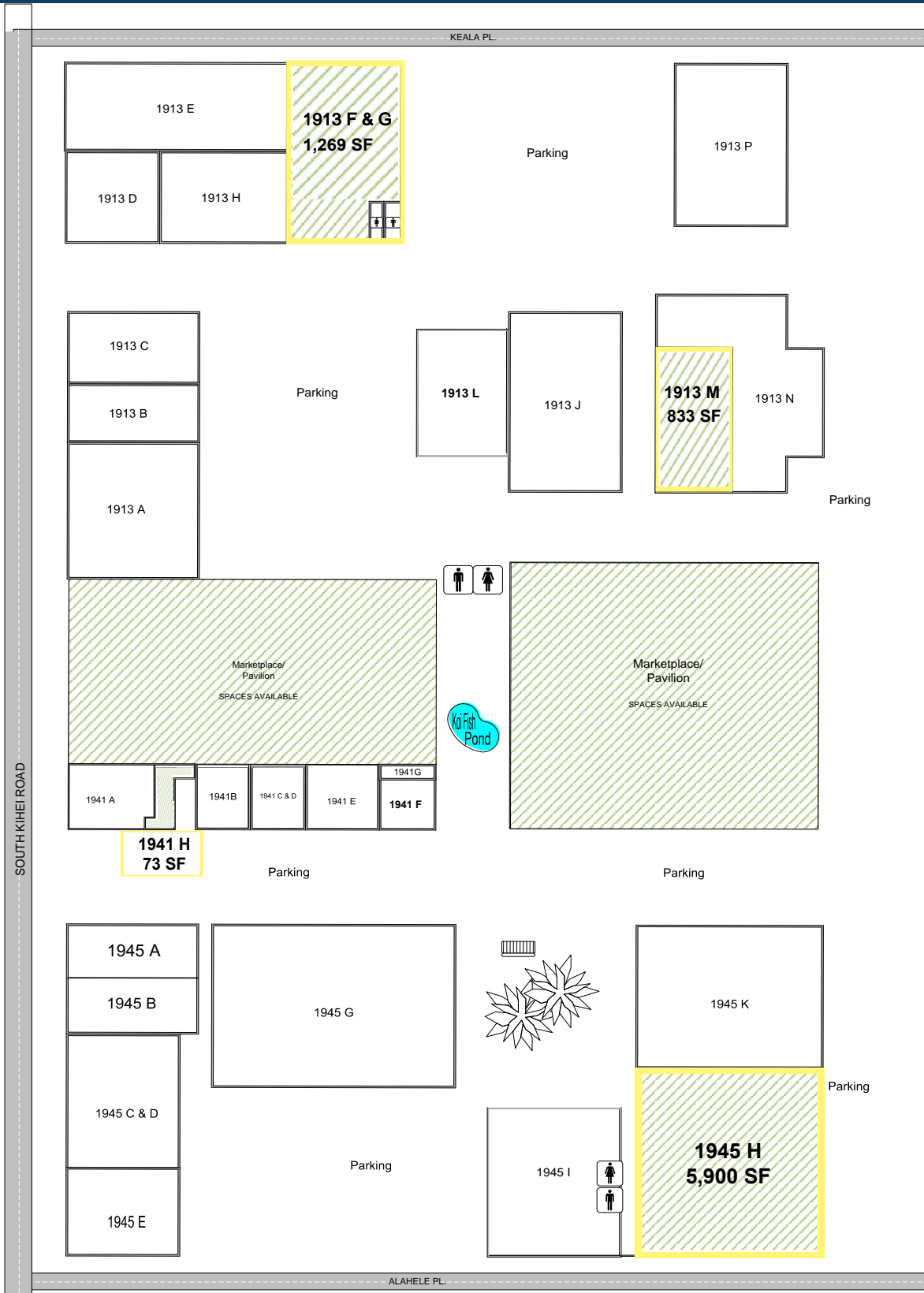
**MW Commercial  
 Realty, Inc.**  
 Real Estate Brokerage

1280 S. Kihei Road | Ste. 224 | Kihei, HI 96753  
 P: (808) 879-5000 | F: (808) 879-3999 | Corp. Lic. # RB-16265  
[www.mwcommercialrealty.com](http://www.mwcommercialrealty.com)

# KIHEI KALAMA VILLAGE

## SITE MAP

1941 S. Kihei Rd., Kihei, HI 96753  
 TMK: (2) 3-9-003-007



The information contained herein comes from sources deemed to be reliable; however, no representation or warranty is made by MW Commercial Realty, Inc. and said information is subject to change without notice. No subagency offered.



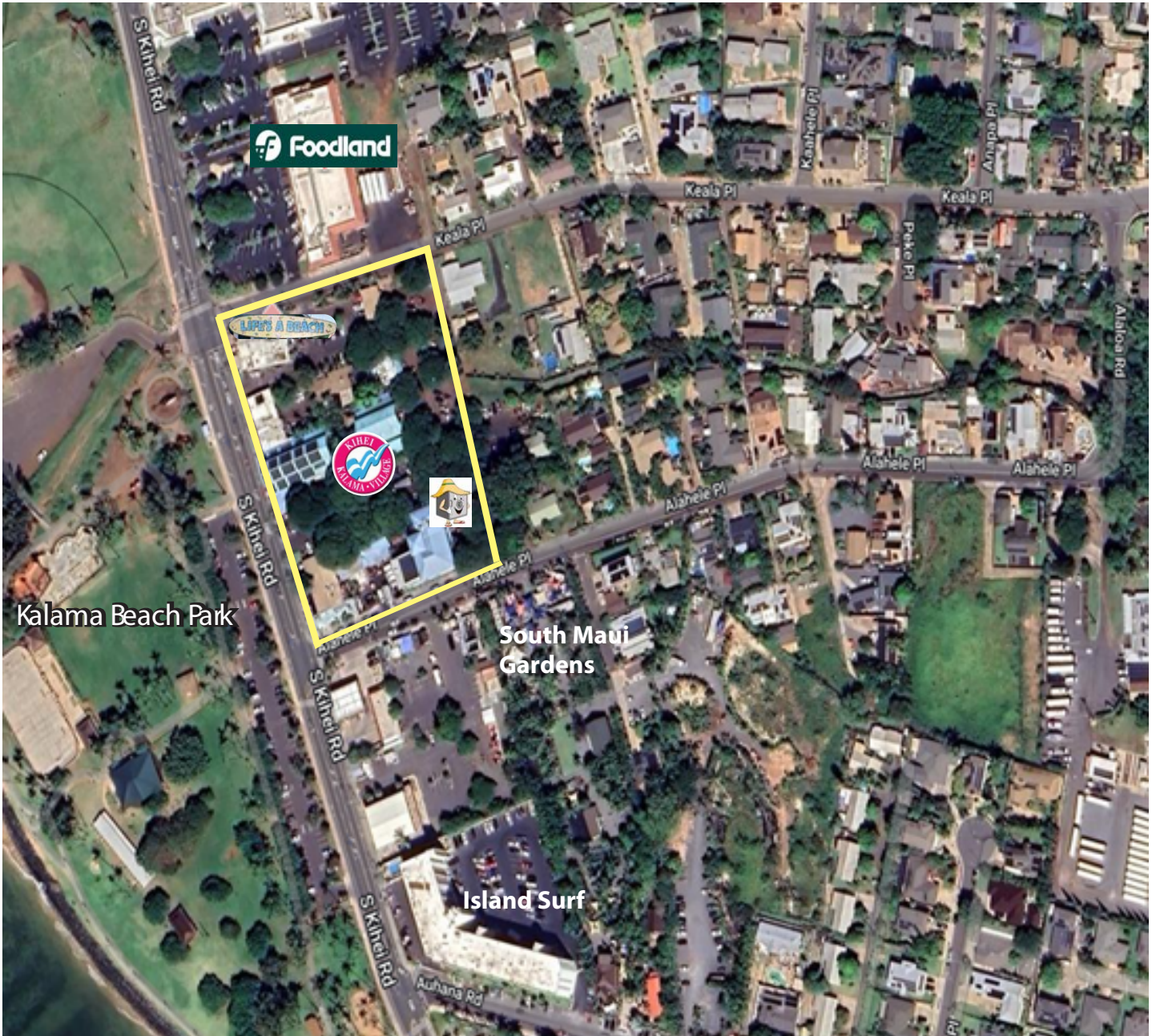
**MW Commercial  
 Realty, Inc.**  
 Real Estate Brokerage

1280 S. Kihei Road | Ste. 224 | Kihei, HI 96753  
 P: (808) 879-5000 | F: (808) 879-3999 | Corp. Lic. # RB-16265  
[www.mwcommercialrealty.com](http://www.mwcommercialrealty.com)



## AREA MAP

**Anchor Tenants include:**  
Kihei Cafe, Life's a Beach, and Three's Bar & Grill,  
CocoNene, and Kai Aloha



*The information contained herein comes from sources deemed to be reliable; however, no representation or warranty is made by MW Commercial Realty, Inc. and said information is subject to change without notice. No subagency offered.*



**MW Commercial  
Realty, Inc.**  
Real Estate Brokerage

1280 S. Kihei Road | Ste. 224 | Kihei, HI 96753  
P: (808) 879-5000 | F: (808) 879-3999 | Corp. Lic. # RB-16265  
[www.mwcommercialrealty.com](http://www.mwcommercialrealty.com)