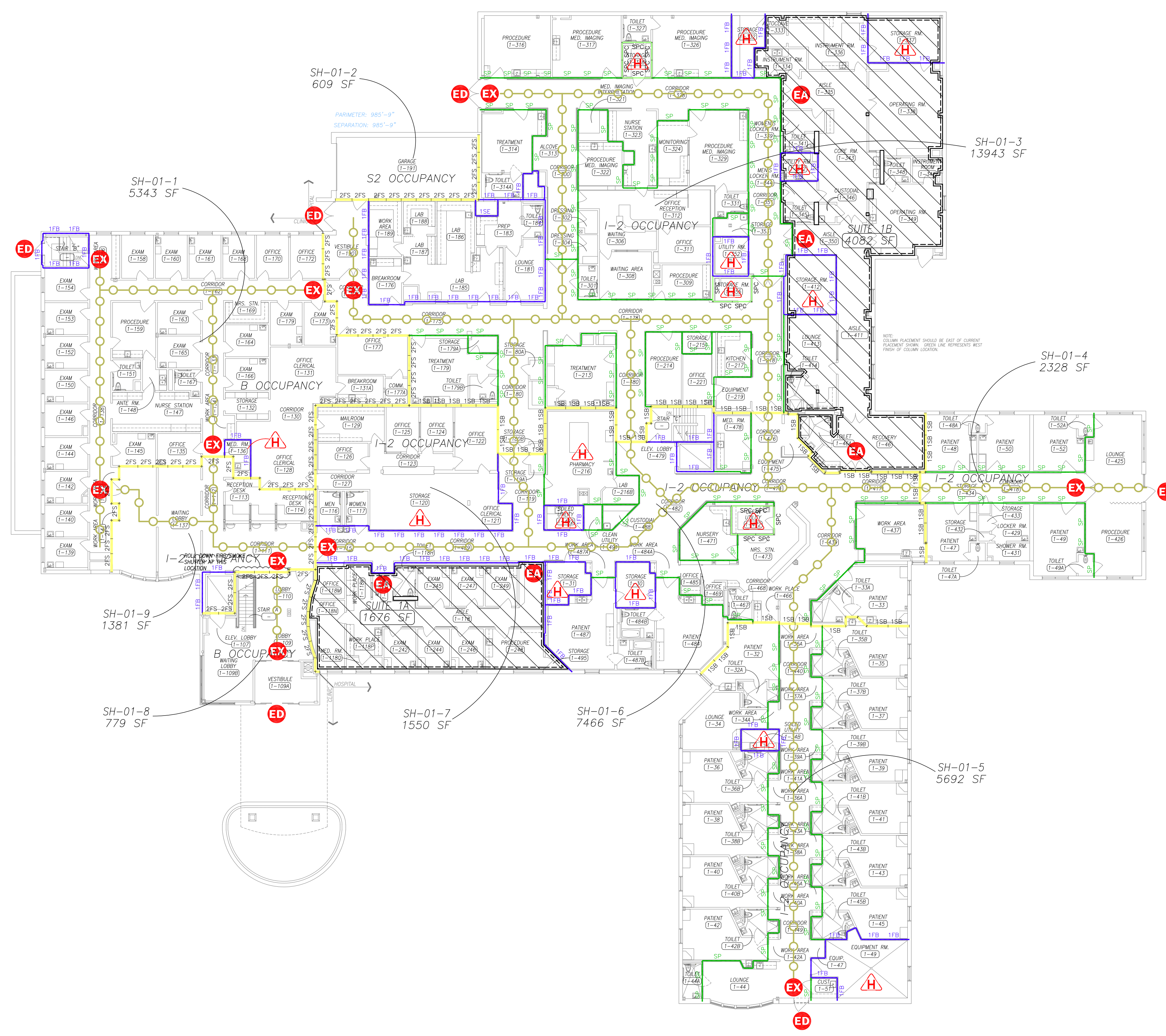


- GENERAL NOTES**
1. PROVIDE FIRESTOPPING AT ALL (EXISTING AND NEW) PENETRATIONS AS REQUIRED TO MAINTAIN FIRE RATINGS AS PER MAYO CLINIC STANDARD SPECIFICATIONS.
 2. SALVAGE ANY BARCODE TAGS FOUND ON DOOR FRAMES BEING REMOVED OR RELOCATED. FORWARD TAGS TO MAYO CLINIC FACILITIES OPERATIONS.
 3. "OUT" INDICATES FURNITURE ITEMS TO BE RETURNED TO OWNER'S STOCK.

THIS IS NOT THE CORRECT FILE FOR USE IN YOUR PROJECT DRAWINGS. COPY THE BLOCK NAMED "LS" LOCATED WITHIN THE DRAWING FILE:
L:\CAD\template\SCHEDULES.dwg
ONTO YOUR LIFE SAFETY PROJECT DRAWING.



**BUILDING CODE, OCCUPANCY AND EGRESS INFORMATION
SPRINGFIELD MEDICAL CENTER – FIRST LEVEL**

PER 2015 MINNESOTA STATE BUILDING CODE (2012 IBC)
PER 2015 MINNESOTA CONSERVATION CODE – EXISTING BUILDINGS (2012 IBC)

STORIES	HEIGHT INFORMATION		AREA CALCULATIONS	
	ALLOWED	ACTUAL	BASIC AREA (1ST LEVEL)	INCREASE FOR FRONTAGE
2	2	2	15,000	39,214 SF
			INCREASE FOR SPRINKLERS	30,000
			SUB-TOTAL	39,214 SF
			INCREASE FOR MULTI-STORY X3 (MAX)	197,500
			TOTAL	84,145 SF

MIXED OCCUPANCY: INSTITUTIONAL 1-2 BUSINESS GROUP MECHANICAL

TYPE OF CONSTRUCTION: II-A, FULLY SPRINKLERED

*NOTE: SUITE AREA SQ FOOTAGES HAVE BEEN ADDED INTO SMOKE COMPARTMENT SQ FOOTAGES TO CALCULATE EXITING REQUIREMENTS

COMPARTMENT ZONE	COMPARTMENT OCCUPANCY (TABLE 1004.1.2)	COMPARTMENT AREA (SQ.FT.)	SQ.FTG.PER OCCUPANT (TABLE 1004.1.2)	OCCUPANT LOAD	EXIT INCHES REQUIRED		INCHES PROVIDED	
					VERTICAL	HORIZONTAL	VERTICAL	HORIZONTAL
SH-01-1	BUSINESS AREA	5,343	100	54	0 x 0.3 = 0.0	54 x 0.2 = 10.8	0	138
SH-01-2	AMBULANCE AREA	609	200	4	0 x 0.3 = 0.0	4 x 0.2 = 0.8	0	148
SUITE 1B	TREATMENT AREA	13,943	240	59	0 x 0.3 = 0.0	59 x 0.2 = 11.8	0	106
SH-01-4	TREATMENT AREA	2,328	240	10	0 x 0.3 = 0.0	10 x 0.2 = 2.0	0	59
SH-01-5	TREATMENT AREA	5,692	240	24	0 x 0.3 = 0.0	24 x 0.2 = 4.8	0	41
SH-01-6	TREATMENT AREA	7,466	240	32	0 x 0.3 = 0.0	32 x 0.2 = 6.4	0	35
SH-01-7	BUSINESS AREA	1,550	100	16	0 x 0.3 = 0.0	16 x 0.2 = 3.2	0	33
SH-01-8	BUSINESS AREA	779	100	8	0 x 0.3 = 0.0	8 x 0.2 = 1.6	0	110
SH-01-9	BUSINESS AREA	1,381	100	14	0 x 0.3 = 0.0	14 x 0.2 = 2.8	0	85
FIRST LEVEL TOTALS				221	0.0	44.2	0	755
						TOTAL EXIT INCHES PROVIDED		755

FIRE RESISTIVE LEGEND

	1 HOUR (FIRE) CEILING ASSEMBLY	60 MINUTE
	2 HOUR (FIRE) CEILING ASSEMBLY	90 MINUTE
	SMOKE TIGHT CEILING ASSEMBLY	N/A
	SP SMOKE PARTITION	NON-RATED
	SPC SMOKE PARTITION	NON-RATED W/CLOSER
	1FB 1 HOUR FIRE BARRIER	45 MINUTE W/CLOSER
	2FB 2 HOUR FIRE BARRIER	90 MINUTE W/CLOSER
	1SE 1 HOUR SHAFT ENCLOSURE	60 MINUTE W/CLOSER
	2SE 2 HOUR SHAFT ENCLOSURE	90 MINUTE W/CLOSER
	1SB 1 HOUR SMOKE BARRIER	20 MINUTE W/CLOSER
	1FS 1 HOUR FIRE/SMOKE BARRIER	45 MINUTE W/CLOSER
	2FS 2 HOUR FIRE/SMOKE BARRIER	90 MINUTE W/CLOSER
	3FW 3 HOUR FIRE WALL	180 MINUTE W/CLOSER
	4FW 4 HOUR FIRE WALL	180 MINUTE W/CLOSER
	1BHM BULKHEAD MEMBRANE TO EXTEND FROM CEILING ASSEMBLY UP TO DECK	N/A
	1BR 1 HOUR RATED BULKHEAD EXTENDING FROM RATED CEILING UP TO DECK	60 MINUTE
	DFR DOORS OR SHUTTERS FIRE AND/OR SMOKE RATED (FS) WITH EMERGENCY EGRESS	PER WALL RATING
	OS OCCUPANCY SEPARATION	MATCH WALL RATING OPENING PROTECTION

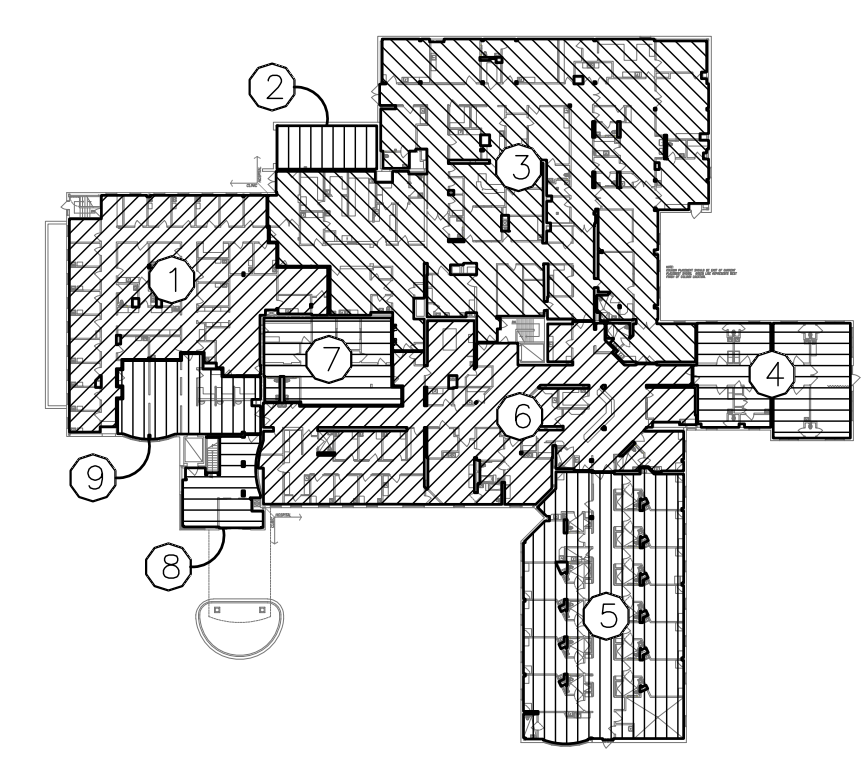
MEANS OF EGRESS

	EXIT ACCESS		EXIT ACCESS CORRIDOR
	EXIT		EXIT PASSAGEWAY
	EXIT DISCHARGE		
	HORIZONTAL EXIT		

ADDITIONAL SYMBOLS

	HAZARDOUS AREA
	SUITE SQUARE FOOTAGE
	SUITE BOUNDARY

Life Safety
Springfield Medical Center
First Floor
Mayo Clinic Health System
Springfield Minnesota



SMOKE COMPARTMENTS

REVISION

REVISION	DATE
	DEC 17
	1/16" = 1'-0"
	XXX
	XXXXX