

Southport Plaza

6205 SE 14th Street
Des Moines, IA 50320
www.cbre.com/desmoines

Southport Plaza is an established multi-tenant retail property located at the busy intersection of SE 14th Street and Army Post in the heart of South Des Moines.

Available Space

- + Suite 6205 – 5,250 SF

Lease Rate

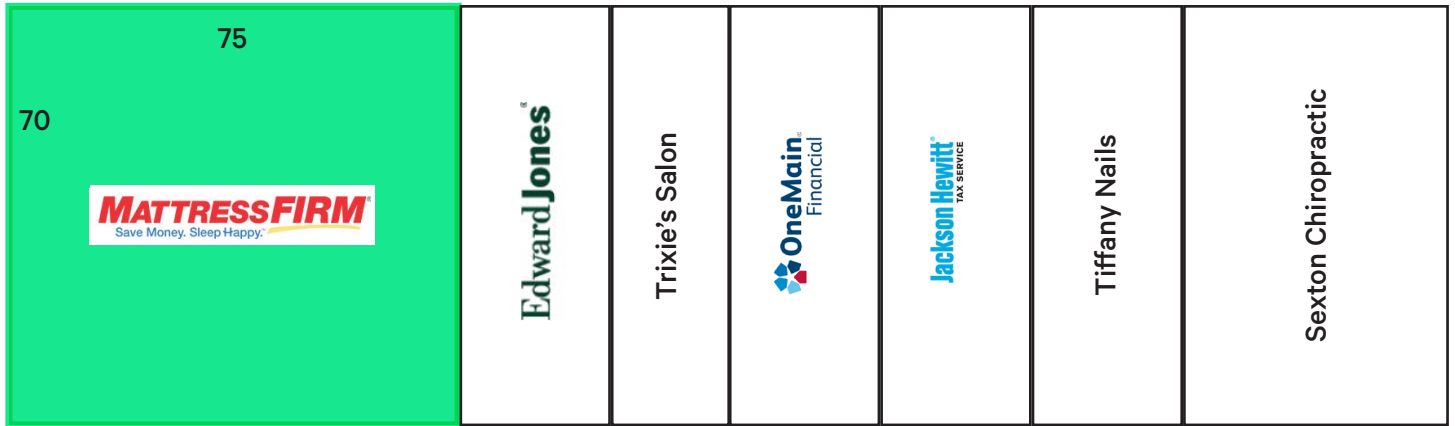
- + Please Contact Broker for Pricing

Property Highlights

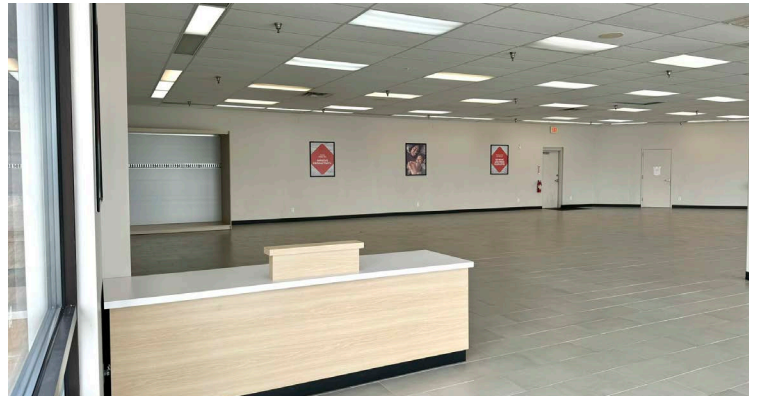
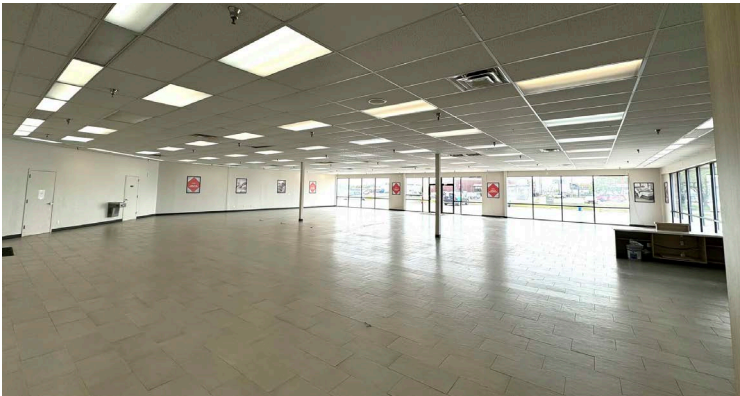
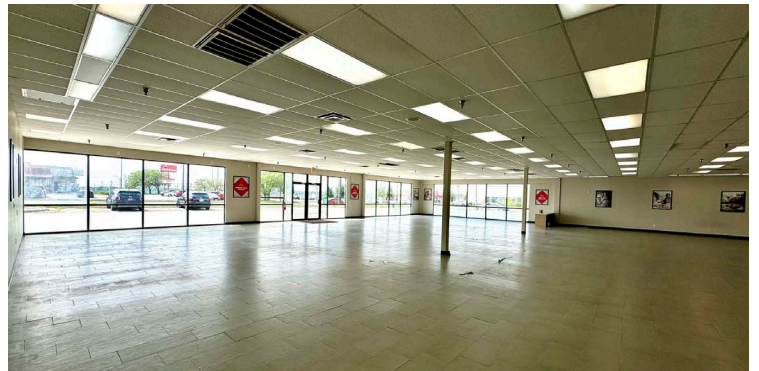
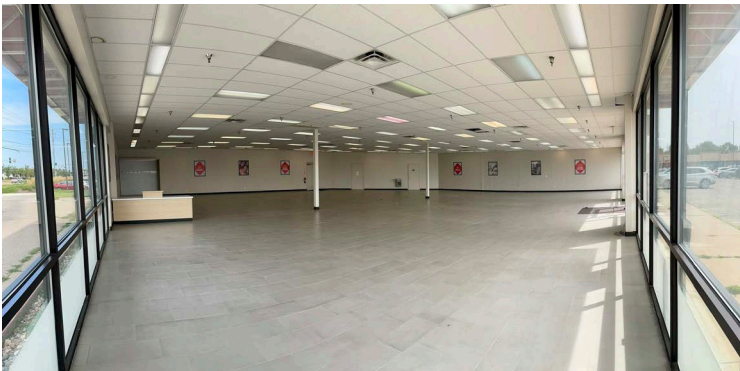
- + Popular 100% leased retail center
- + Located on NE side of SE 14th and Army Post Rd intersection



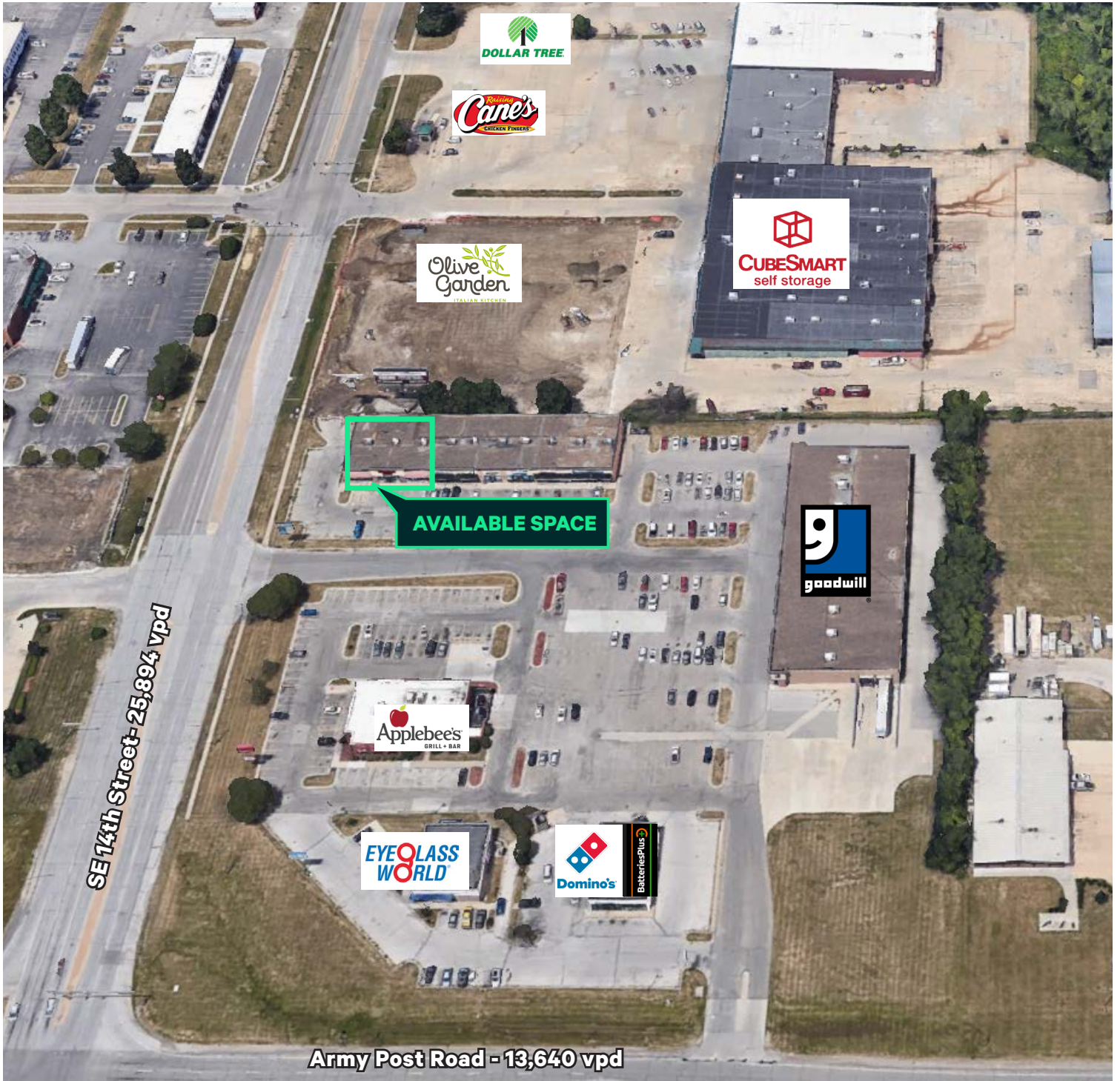
Site Map



Suite Photos



Aerial Photo



Southport Plaza

6205 SE 14th Street | Des Moines, IA 50320

For Lease

Location



Demographics

2024 Demographics	1 Mile	3 Miles	5 Miles
Population	8,305	58,783	98,217
Daytime Population	7,531	41,279	143,582
Employees	3,592	13,457	111,865
Average Household Income	\$65,550	\$88,712	\$89,319

Contact Us

Shana Patrick

Senior Associate

+1 515 777 0941

shana.patrick@cbre.com

Licensed in the State of Iowa

© 2024 CBRE, Inc. All rights reserved. This information has been obtained from sources believed reliable, but has not been verified for accuracy or completeness. You should conduct a careful, independent investigation of the property and verify all information. Any reliance on this information is solely at your own risk. CBRE and the CBRE logo are service marks of CBRE, Inc. All other marks displayed on this document are the property of their respective owners, and the use of such logos does not imply any affiliation with or endorsement of CBRE. Photos herein are the property of their respective owners. Use of these images without the express written consent of the owner is prohibited.

www.cbre.com/desmoines

