



18-20, 22 and 24 Irvine Turner Boulevard

Portfolio of 3 Properties for Sale



Gilbert Gray

KP Edgestone Realty LLC

76 Main St, Suite 1, Matawan, NJ 07747

ggray@kpedgestone.com

(732) 307-3200



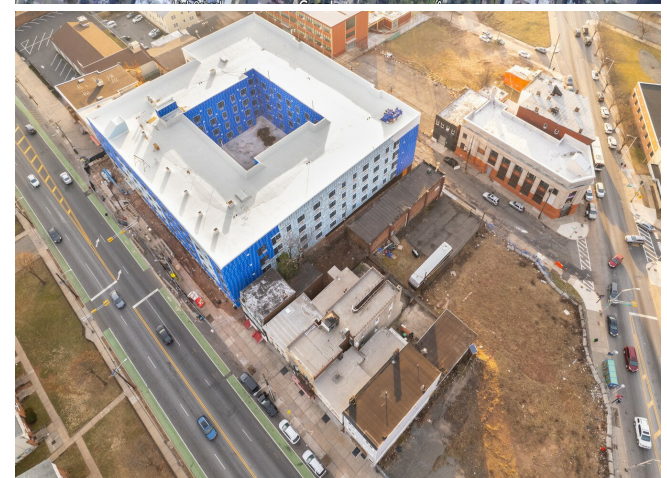
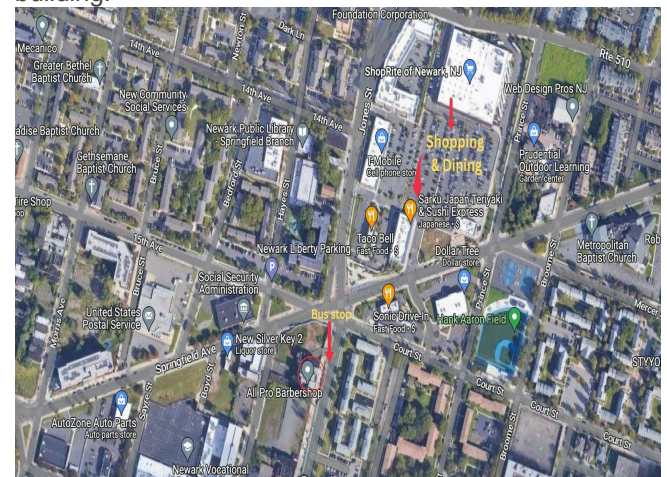
18-20, 22 and 24 Irvine Turner Boulevard

\$2,149,700

Investor's Delight! Do not miss your chance to own this mixed use property, spacious storefront and two residential units above. Close to public transportation and business district. Norfolk to Jones to Irvine Turner Opportunity...

Investor's Delight! Do not miss your chance to own this mixed use property, spacious storefront and two residential units above. Close to public transportation and business district. Norfolk to Jones to Irvine Turner Opportunity...

- Close to public transportation and business district.
- 85,132 Households within 2 miles for 2023.
- 2023 Population 237,741 within 2 miles. Projected 2028 Population within 2 miles to be 258,829.
- Neighborhood has great possibilities.
- New Residential Units to open on an Adjoining building.



Price:	\$2,149,700
Price / SF:	\$196.46 / SF
Cap Rate:	10.47%
Sale Type:	Investment
Status:	Active
Number of Properties:	3
Total Building Size:	10,942 SF



18-20, 22 and 24 Irvine Turner Boulevard

Property Name/Address, City, State	Property Type	Size	Year Built	Individual Price
 18 - 20 Irvine Turner Blvd, Newark, NJ	Retail	2,500		
 22 Irvine Turner Blvd, Newark, NJ	Retail	5,503		
 24 Irvine Turner Blvd, Newark, NJ	Retail	2,939		