

FOR SALE

3704 RUFFIN ROAD - BUILDING B | SAN DIEGO, CA 92123 (Highland Skypark)

Asking Price: \$2,900,000

Price Reduced from ~~\$3,168,000~~



**SELLER AGREES TO PAY THE BUYER'S HOA DUES
FOR A PERIOD OF ONE (1) YEAR AT CLOSING.**

***DO NOT DISTURB TENANTS**

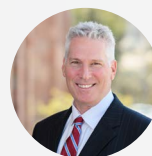
PROPERTY HIGHLIGHTS

- Approx. 4,775 SF building
- Condo Property - Shared Lot
Approx. 204,678 SF (4.7 AC)
- APN #421-350-01-02
- Year Built: 2007
- Zoning: IL-2-1
- Parking Ratio: 7.33/1,000 SF
- 35 Surface Parking Spaces
- **ASKING PRICE: \$2,900,000**



Questions? Ready to schedule a tour? Contact me!

All information furnished regarding property for sale, rental or financing is from sources deemed reliable, but no warranty or representation is made to the accuracy thereof and same is submitted to errors, omissions, change of price, rental or other conditions prior to sale, lease or financing or withdrawal without notice. No liability of any kind is to be imposed on the broker herein.

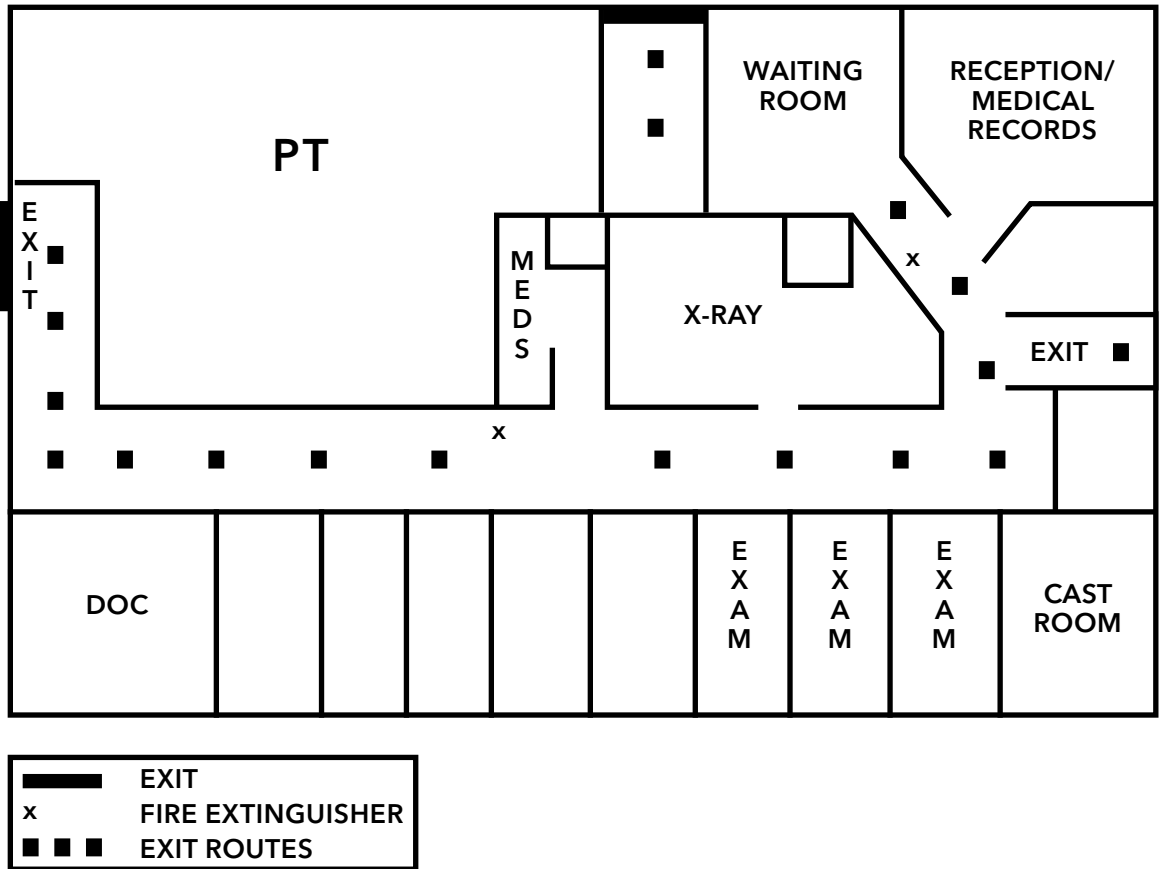


Michael Golden
(760) 448-2447
mgolden@lee-associates.com
CalBRE #01359892

FOR SALE

3704 RUFFIN ROAD - BUILDING B | SAN DIEGO, CA 92123 (Highland Skypark)

FLOOR PLAN



FOR SALE

3704 RUFFIN ROAD - BUILDING B | SAN DIEGO, CA 92123 (Highland Skypark)



DEMOGRAPHICS



POPULATION

1 Mile: 16,763
3 Mile: 114,419
5 Mile: 396,490



AVG. HOUSEHOLD INCOME

1 Mile: \$122,812
3 Mile: \$142,693
5 Mile: \$132,782



TOTAL EMPLOYEES

1 Mile: 22,132
3 Mile: 114,435
5 Mile: 211,569

Questions? Ready to schedule a tour? **Contact me!**

All information furnished regarding property for sale, rental or financing is from sources deemed reliable, but no warranty or representation is made to the accuracy thereof and same is submitted to errors, omissions, change of price, rental or other conditions prior to sale, lease or financing or withdrawal without notice. No liability of any kind is to be imposed on the broker herein.



Michael Golden
(760) 448-2447
mgolden@lee-associates.com
CalBRE #01359892