

565 NORTHSIDE DR SW

ABRAMS FIXTURES

HISTORY REIMAGINED



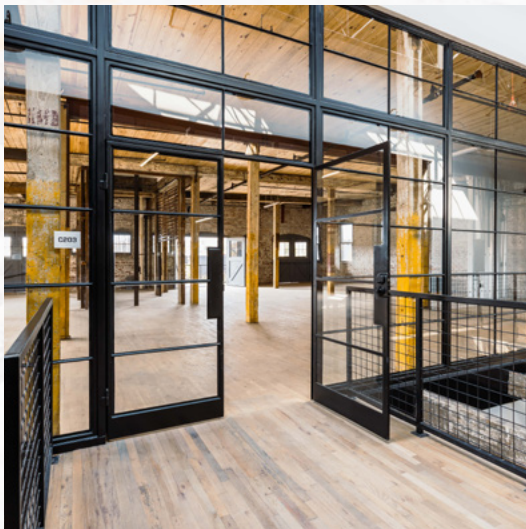
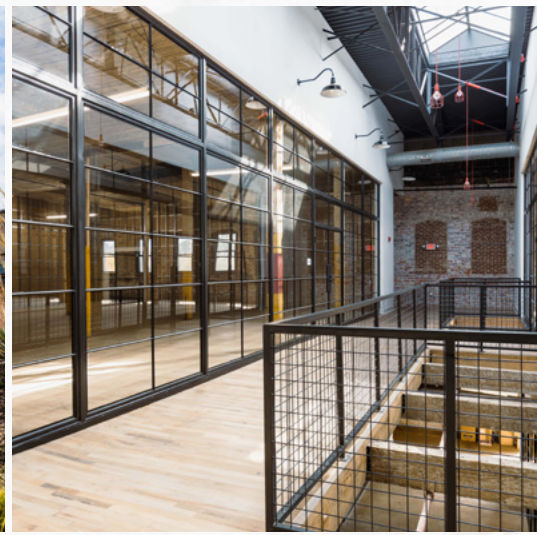
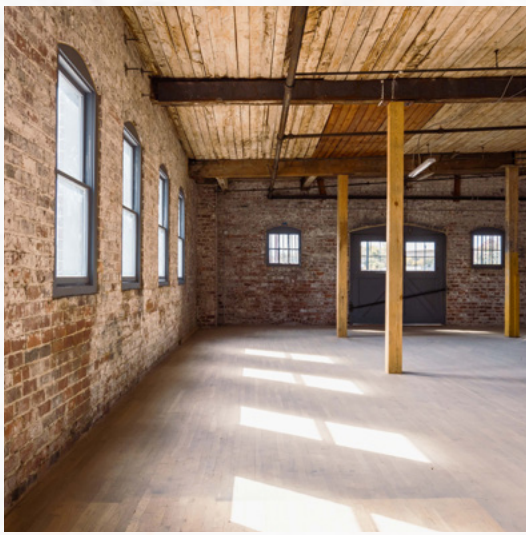
ABRAMS FIXTURES

565 NORTHSIDE DR SW

INTRODUCTION

Originally built as a manufacturing plant for threshing machines now re-imagined by Braden Fellman, Abrams Fixtures is a mixed-use development offering 33 residential lofts, over 8,000 square feet of restaurant and 50,000 square feet of loft space for commercial and retail use. The adaptive rehabilitation features unique industrial details like original brick, exposed timber, vintage graffiti and large factory windows. With historic charm and modern Atlanta energy, Abrams Fixtures is poised to become a centerpiece of the rapidly evolving West End Beltline district.

[READ MORE >](#)



PROPERTY HIGHLIGHTS

A collection of three historic buildings, carefully and creatively preserved



14' Ceilings



Plenty of parking on site (1/1000 sf)



13,700 square feet of customizable loft office space available



Residences and dining on property



2 move-in ready office lofts available that seat 8-12 team members



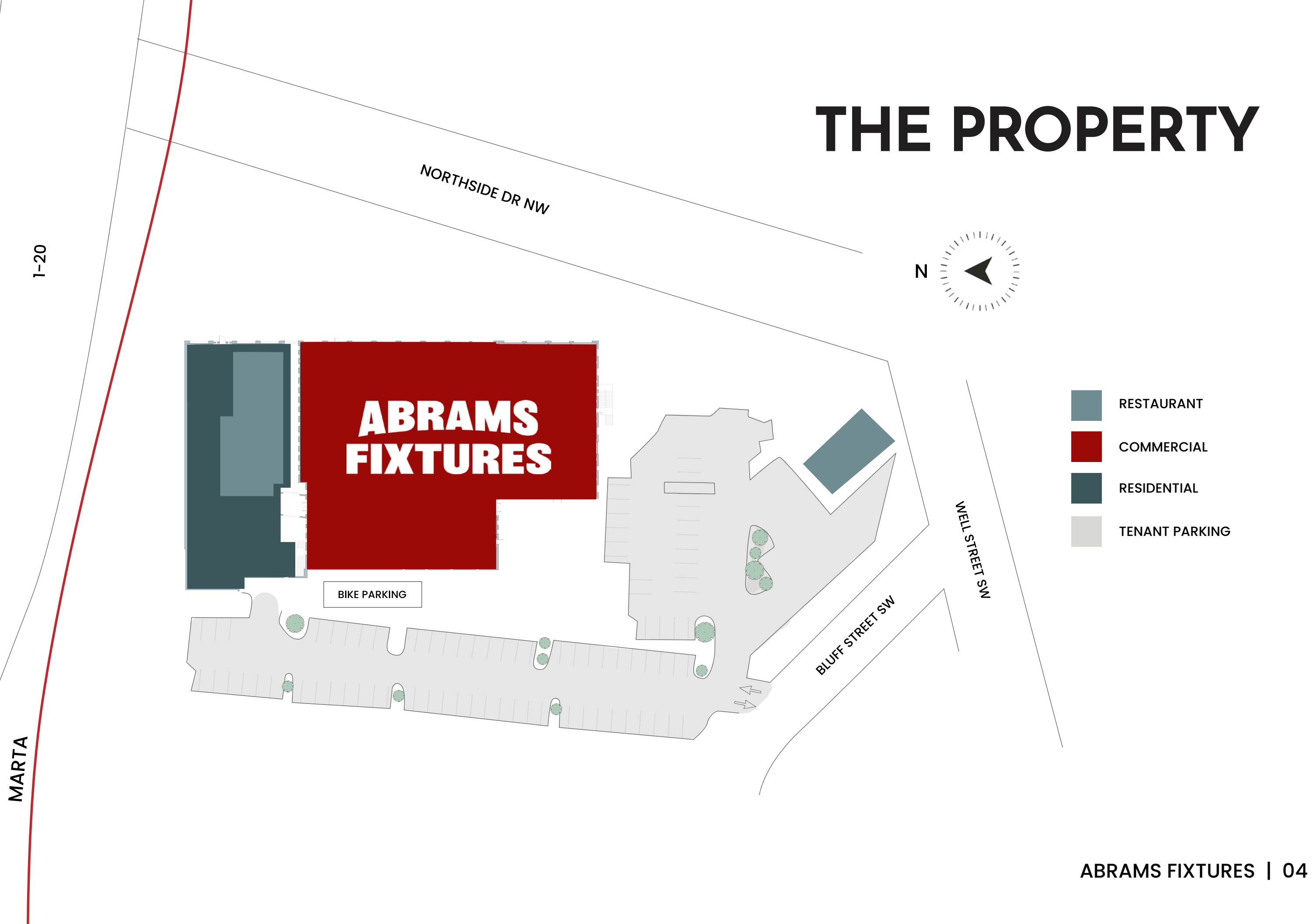
24/7 security including APD-synced camera surveillance



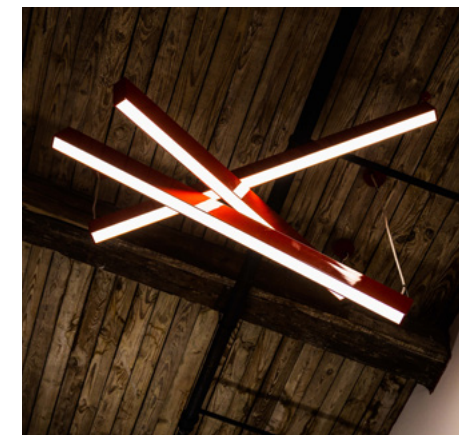
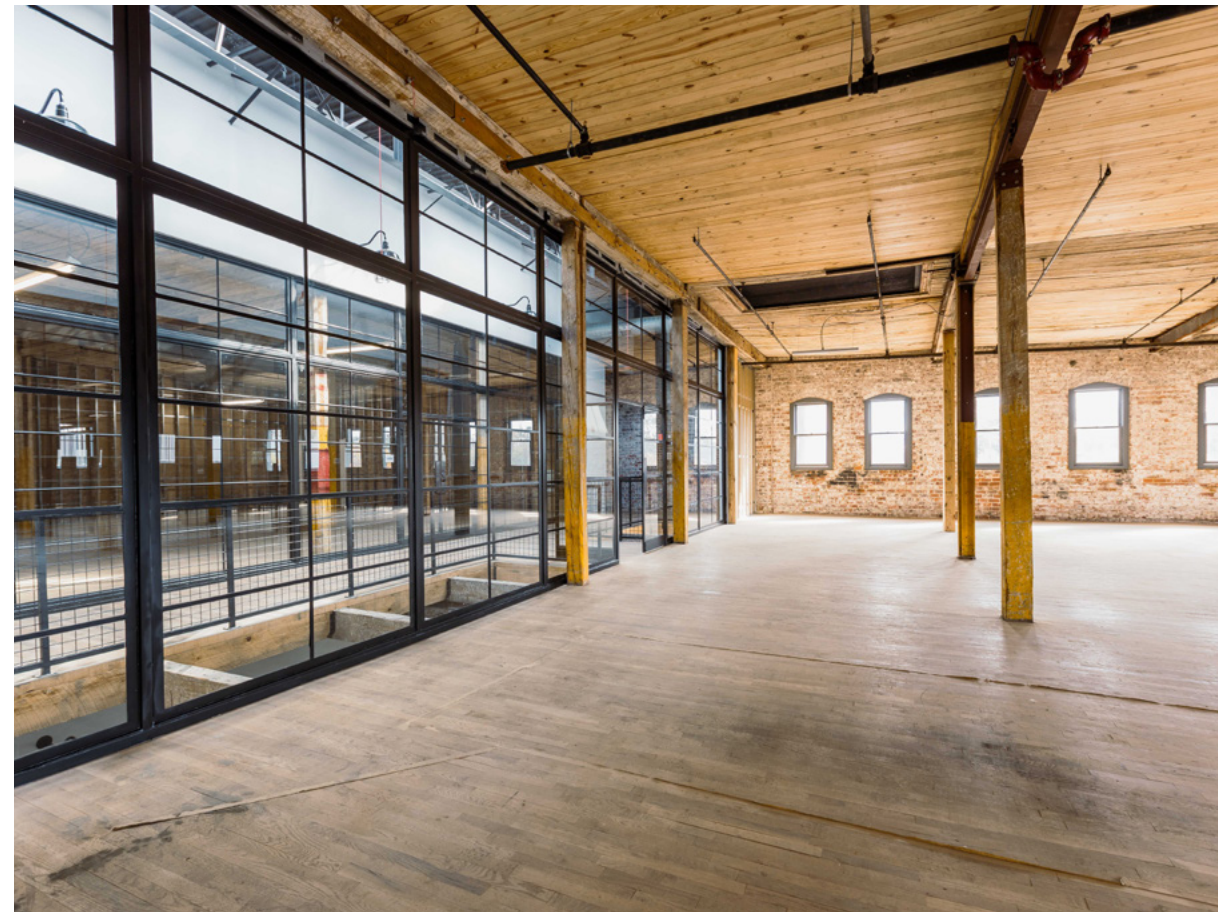
Close to:

- I-20, Downtown
- The BeltLine Westside Trail
- The MET
- Atlanta University Center
- MARTA West End station
- and more

THE PROPERTY



THE SPACE



1 FLOOR

COMMERCIAL

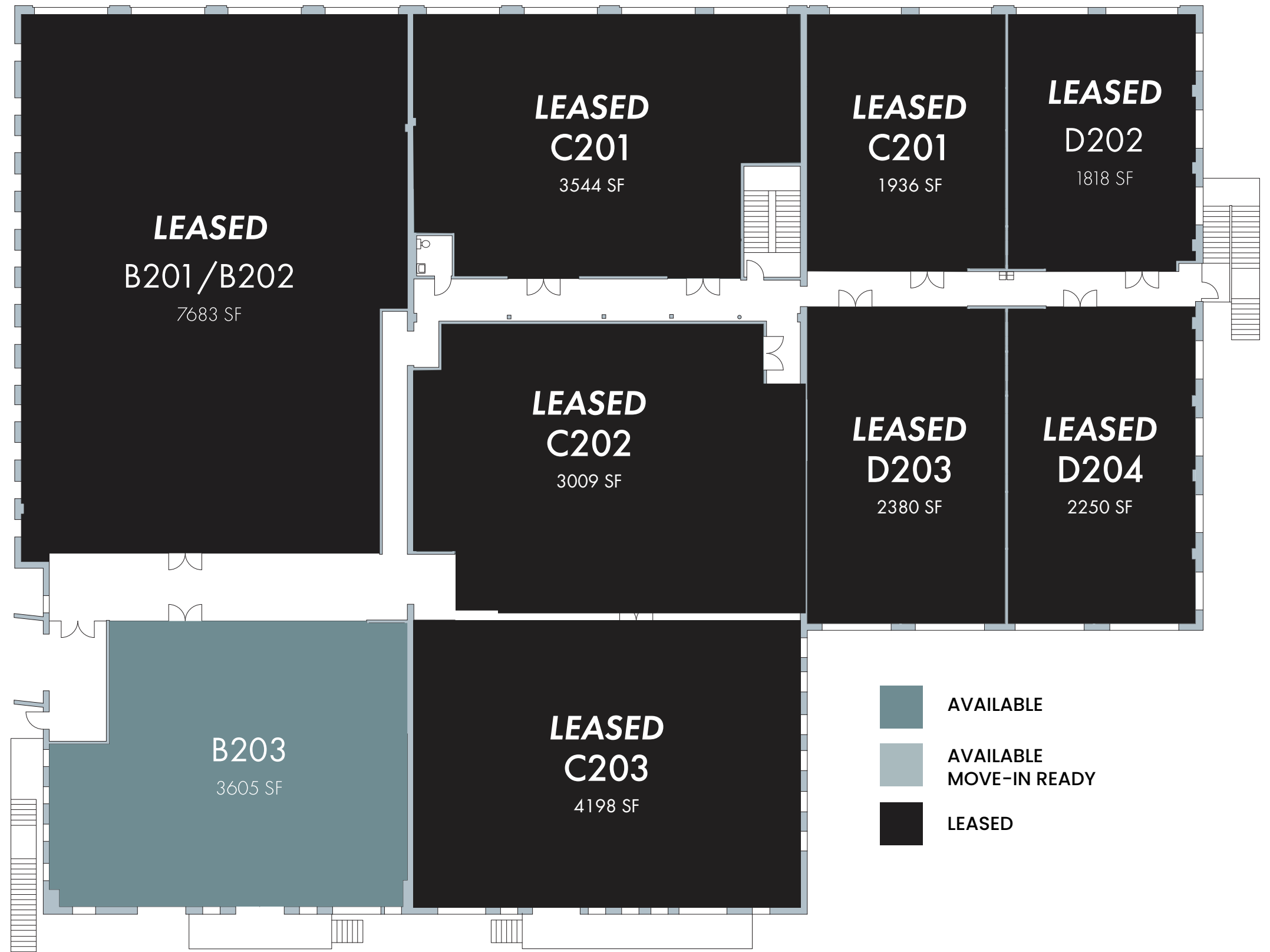


2

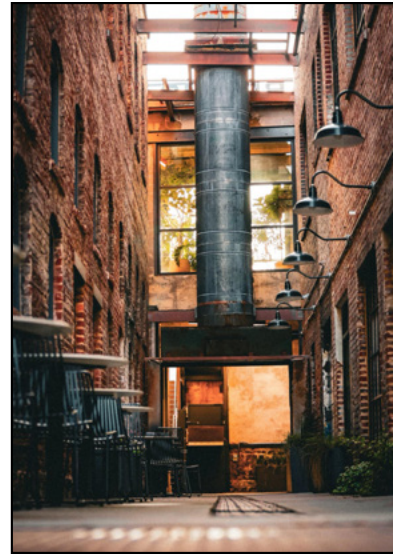
FLOOR

LEASED
D203
2380 SF

COMMERCIAL



RESTAURANTS



BUILDING TIMELINE

Residential | 1920

Office Lofts | 1926–1948

1960 OUTBUILDING

HISTORY TIMELINE

OPENED

1926

AFX was spec built for “industrial type uses” popping up in Atlanta in the early 1900s. The initial building, a four-story brick ‘slow burn’, was constructed in 1920 by Mackle Construction Company for the J.I. Case Company to manufacture threshing machines for farmers to efficiently harvest their fields.

BUILDING FIRE

1955

When the original structure opened in 1926 the developer, Massell Real Estate Co., made a big promotional splash. At the time, it was high tech ... meaning it had heat and sprinklers. The “slow burn” construction style was rare in the South and highly desirable since fires were a major concern at the time (there was, unfortunately, a fire in 1955).

GATE CITY TABLE

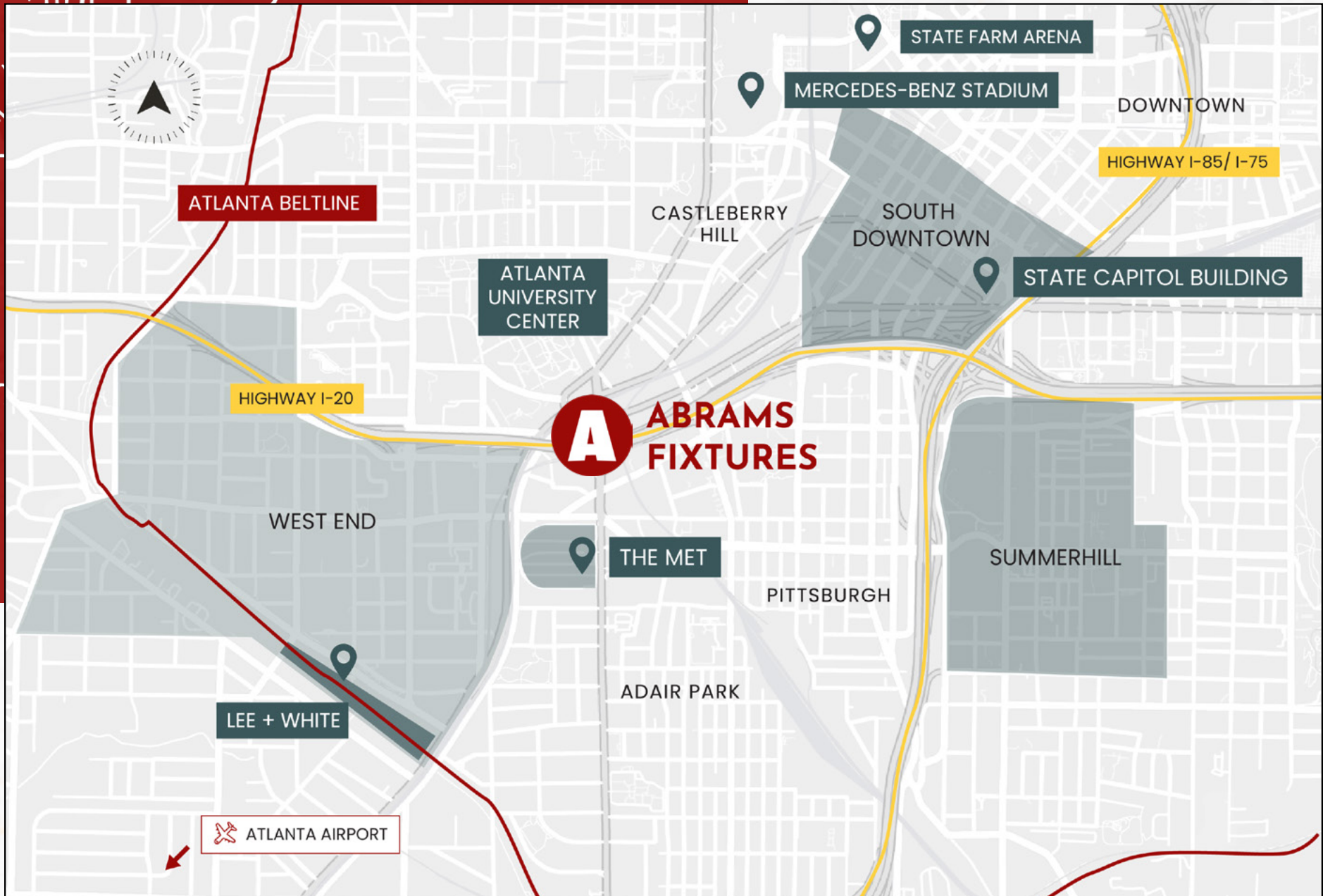
1955

In 1946, the Gate City Table Company constructed a two-story concrete-block addition on the south end of the two-story brick warehouse (one of Atlanta’s lesser known nicknames is The Gate City).

ABRAMS FIXTURES MOVES IN

1972

The other additions were constructed in 1948 and 1960, when Abrams Fixtures moved their retail display and fixture manufacturing operation into the building. They connected the structures in 1972, and stayed there through 1988. Some of their notable clients were Home Depot, Goody’s, Kroger, Publix.



LOCATION

Thanks to the arrival of the Atlanta BeltLine Westside trail and a collective effort to revitalize Downtown, there's quite a lot going on in this easy-to-access area of town. Expect even more exciting additions to the neighborhood to pop up in the near future.

WEST END IS THE BEST END FOR F+B

- MET ATLANTA**
 SAMMY'S
 RYOKOU
 WINE CLUB
 RODNEY SCOTT'S

- HOT DOG PETE'S
 HOW CRISPY
 JUNIOR'S PIZZA
 LITTLE BEAR
 LITTLE TART
 MAEPOLE
 PUBLIX
 WOOD'S CHAPEL BBQ

- SOUTH DOWNTOWN**
 PINS MECHANICAL
 PIZZA CLEMETINE
 ROOFTOP DINER & LOUNGE
 SPILLER PARK COFFEE
 THIRTEENTH FLOOR
 TYDETATE KITCHEN

- WEST END / LEE + WHITE**
 ASW DISTILLERY
 BEST END BREWING
 BOXCAR
 CULTURED SOUTH
 DOUX SOUTH
 GOLDA
 HONEYSUCKLE GELATO
 HOPCITY
 MONDAY NIGHT

- SUMMERHILL**
 D BOCA N BOCA
 HALFWAY CROOKS BEER
 HERO DOUGHNUTS

ACCESSIBILITY



MERCEDES BENZ STADIUM

3 minutes 



I-20

5 minutes 



ATLANTA BELTLINE

6 minutes 



MARTA

4 minutes (Walk) 



AIRPORT

15 minutes 



STATE CAPITAL

5 minutes 



**DOWNTOWN
ATLANTA**

**INTERSTATE
I-20**

MARTA

ABRAMS FIXTURES
565 Northside Dr SW



CONTACT

Steve DeVinney

steve.devinney@streamrealty.com

404.962.8646

Malik Leaphart

malik.leaphart@streamrealty.com

404.962.8654

**ABRAMS
FIXTURES**

565 NORTHSIDE DR SW

Owned, Restored &
Managed by:

**BRADEN
FELLMAN**

Be Unique. Be Original. Be Intown.

Leasing by:

STREAM