



946 N Cherry St | Tulare, CA

Property For Lease

1005 N Demaree Street
Visalia, California 93291
O | 559.754.3020
F | 559.429.4016
www.mdgre.com

GRAHAM | **& ASSOCIATES**

to learn more, visit: www.mdgre.com

Matt Graham
Lic# 01804235
www.mdgre.com

946 N Cherry St | Tulare, CA

GRAHAM | & ASSOCIATES

Property For Lease

PROPERTY DETAILS

Address 946 N Cherry St | Tulare, CA

Square Feet Available 1,880 +/- Sq. Ft.

Zoning PA

Lease Rate \$1.55 Per Sq. Ft.

Lease Type Modified Gross

Additional Comments:

Professional office space available for lease on Cherry Street. The well located building sits directly across from Adventist Hospital and sits amongst numerous medical offices. The office suite contains a reception area, private offices, open bullpen area, break room and restrooms. Parking is on-site. Conveniently located near 99 Freeway on/off ramps. Please call for further details.



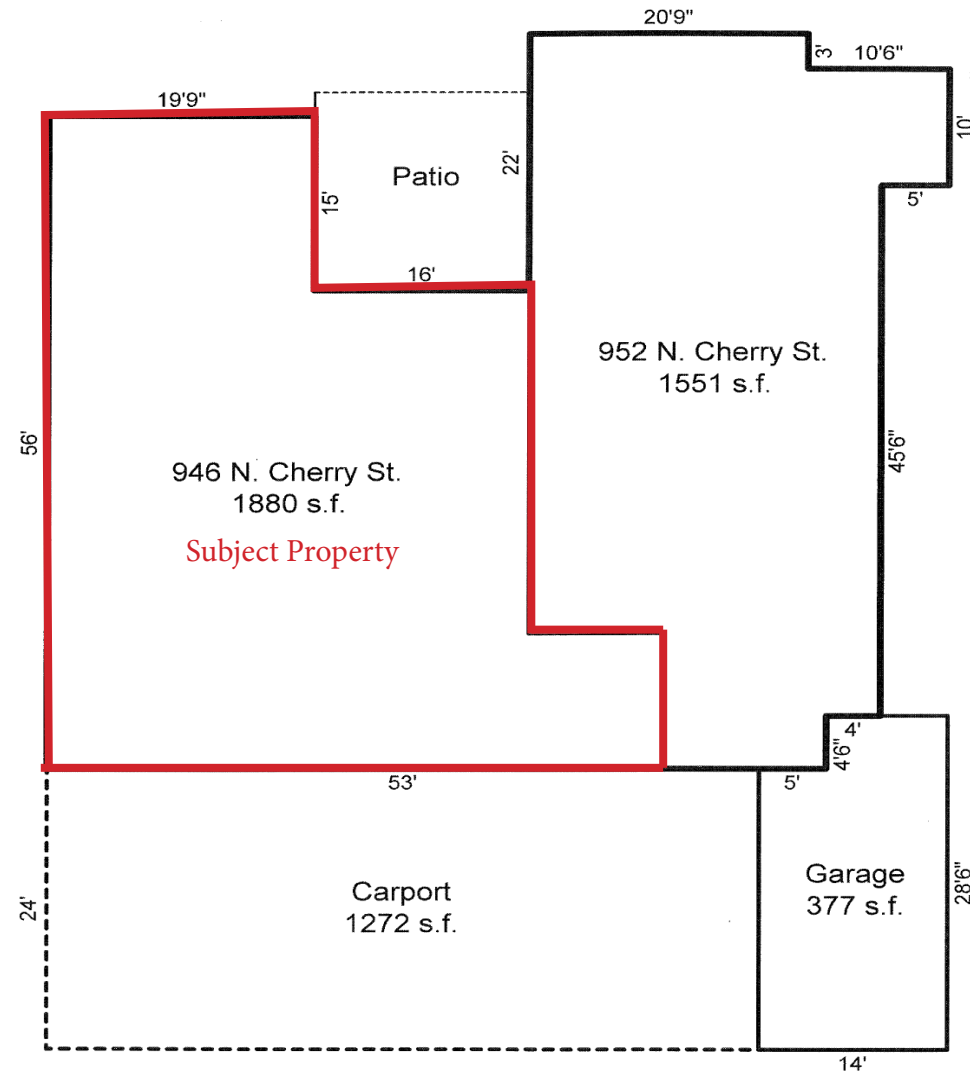
Contact Broker:
Matt Graham
Lic# 01804235

to learn more, visit: www.mdgre.com

1005 N Demaree Street
Visalia, California 93291
O | 559.754.3020

PLEASE NOTE: ALL INFORMATION AND REPRESENTATION MADE HEREIN, WHILE NOT GUARANTEED, HAVE BEEN SECURED FROM SOURCES WE BELIEVE TO BE RELIABLE, HOWEVER, THEY ARE NOT WARRANTED BY MATT GRAHAM & ASSOCIATES AND ARE SUBJECT TO CHANGE WITHOUT NOTICE.

FLOOR PLAN

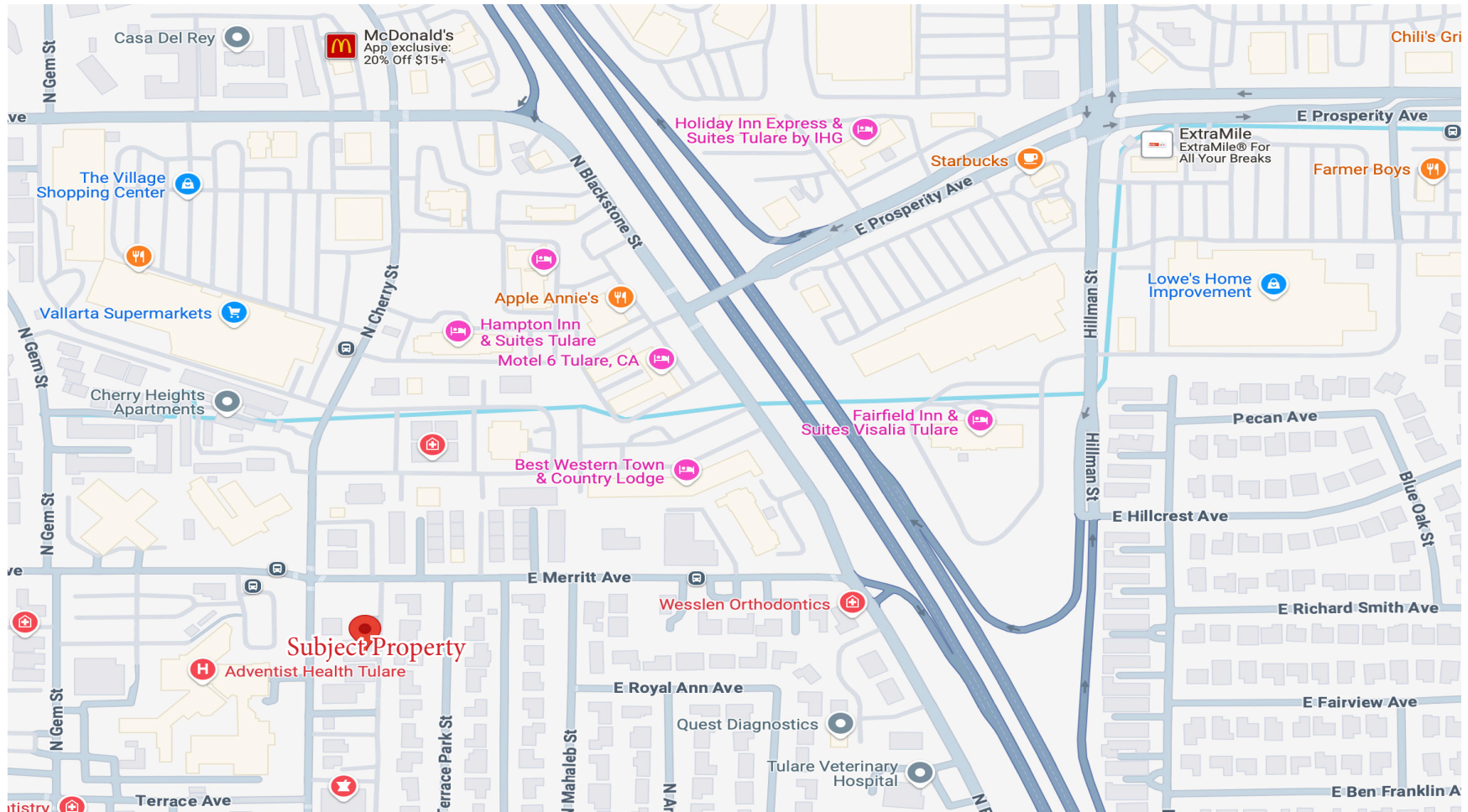


946 N Cherry St | Tulare, CA

GRAHAM & ASSOCIATES

Property For Lease

LOCATION MAP



PLEASE NOTE: ALL INFORMATION AND REPRESENTATION MADE HEREIN, WHILE NOT GUARANTEED, HAVE BEEN SECURED FROM SOURCES WE BELIEVE TO BE RELIABLE, HOWEVER, THEY ARE NOT WARRANTED BY MATT GRAHAM & ASSOCIATES AND ARE SUBJECT TO CHANGE WITHOUT NOTICE.

946 N Cherry St | Tulare, CA

GRAHAM & ASSOCIATES

Property For Lease

PROPERTY LAYOUT



PLEASE NOTE: ALL INFORMATION AND REPRESENTATION MADE HEREIN, WHILE NOT GUARANTEED, HAVE BEEN SECURED FROM SOURCES WE BELIEVE TO BE RELIABLE, HOWEVER, THEY ARE NOT WARRANTED BY MATT GRAHAM & ASSOCIATES AND ARE SUBJECT TO CHANGE WITHOUT NOTICE.