

FOR LEASE
1,825 ± SF OFFICE
GENERAL/MEDICAL SPACE

240 W. Passaic St.
Maywood, New Jersey



Property Features

- Total Building Size: 18,240 ± SF
- Suite 12: 1,825 ± SF
- Reception area and office, Kitchenette and Five (5) offices
- Two (2) Floors, with Elevator
- Lot Size: 1.07 Acres
- Ample Parking Available on lot
- Building Fully Air Conditioned
- 1.6 Miles from HUMC
- Excellent highway convenience, one-half block from Rt 17
- Curbside NJ Transit Bus mass transit on same block

INQUIRE FOR LEASE RATE






**Available for
General or
Medical Space**

For more information

Michael A. Brown
Vice President

201 488 5800 x134 • mbrown@naihanson.com

NAI James E. Hanson
COMMERCIAL REAL ESTATE SERVICES. WORLDWIDE

FOLLOW US!      | NJ Offices: Teterboro | Parsippany | naihanson.com | Member of NAI Global with 300 Offices Worldwide

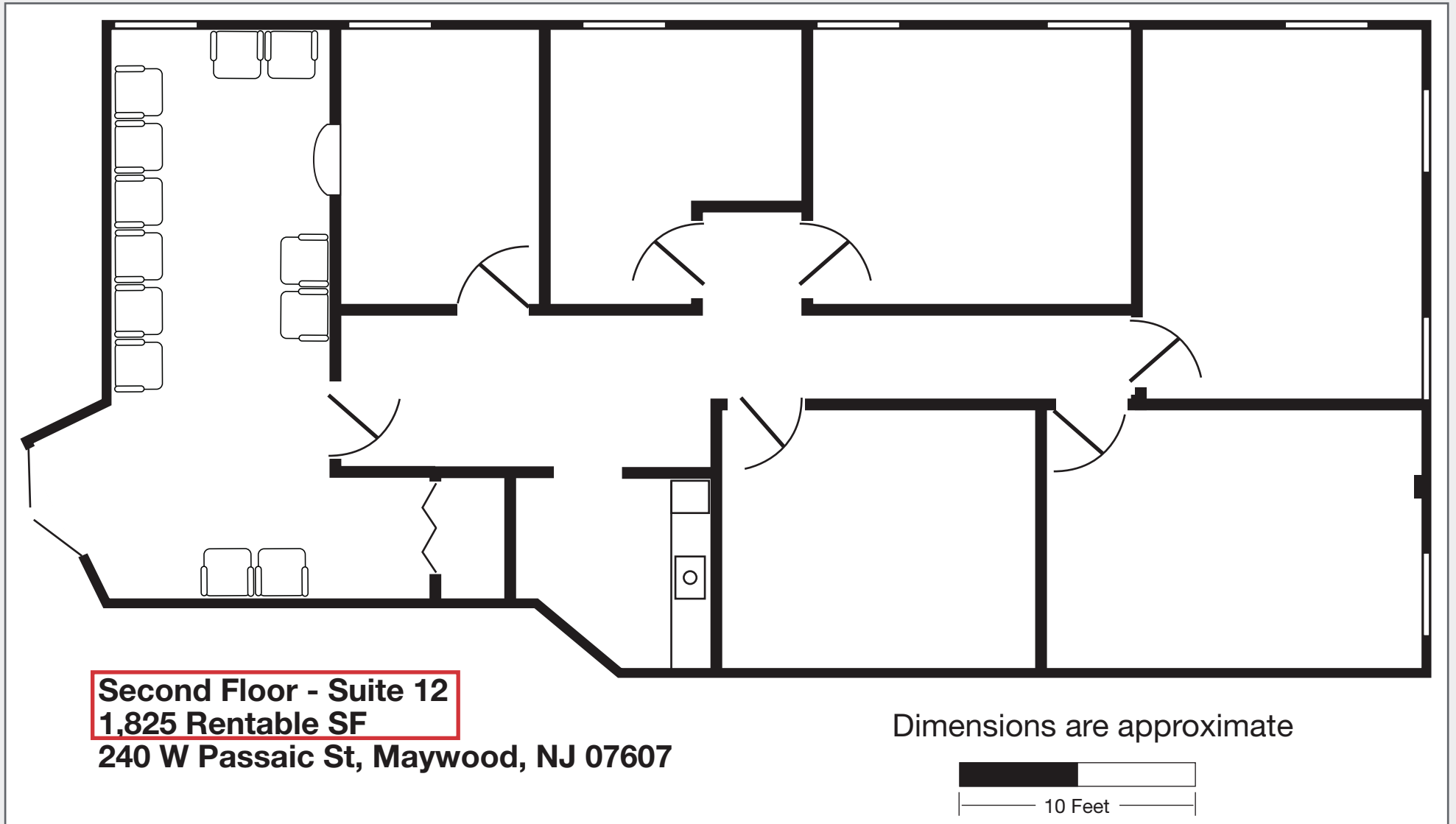
SERVICES OFFERED

Brokerage • Property Management • Corporate Services • Financing • Logistics • Government Services • Healthcare • Tenant Representation • Cold Storage • Investment Services

The information contained herein has been obtained from sources considered to be reliable, but no guarantee of its accuracy is made by NAI James E. Hanson

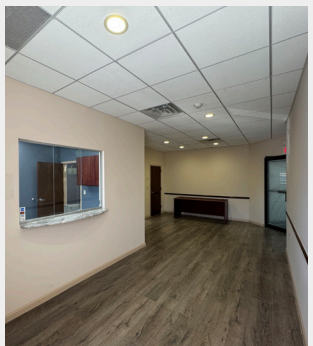
PROPERTY FLOOR PLAN

240 W. Passaic St.
Maywood, New Jersey



PROPERTY PHOTOS

240 W. Passaic St.
Maywood, New Jersey



AERIAL & HIGHWAY MAP

240 W. Passaic St. Maywood, New Jersey

