

# HEATHERLY BUILDING

128 Auburn Court  
Westlake Village, CA 91362

**NAI Capital**  
COMMERCIAL REAL ESTATE SERVICES, WORLDWIDE

HEATHERLY BUILDING  
FEY CHIROPRACTIC  
128 AUBURN COURT

## FOR LEASE

Small Office Suites Available

**Evelyn Hamilton**

818.742.1646

[ehamilton@naicapital.com](mailto:ehamilton@naicapital.com)

CA DRE #01925029

No warranty, express or implied, is made as to the accuracy of the information contained herein. This information is submitted subject to errors, omissions, change of price, rental or other conditions, withdrawal without notice, and is subject to any special listing conditions imposed by our principals. Cooperating brokers, buyers, tenants and other parties who receive this document should not rely on it, but should use it as a starting point of analysis, and should independently confirm the accuracy of the information contained herein through a due diligence review of the books, records, files and documents that constitute reliable sources of the information described herein. Logos are for identification purposes only and may be trademarks of their respective companies. NAI Capital Commercial, Inc. CAL DRE Lic. #02130474

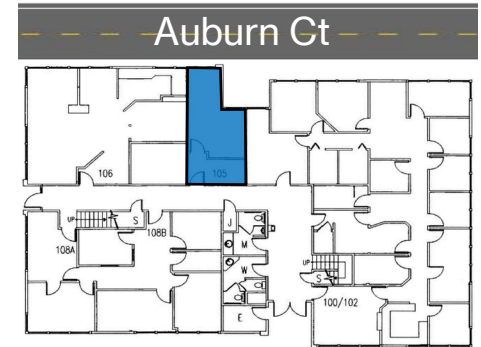
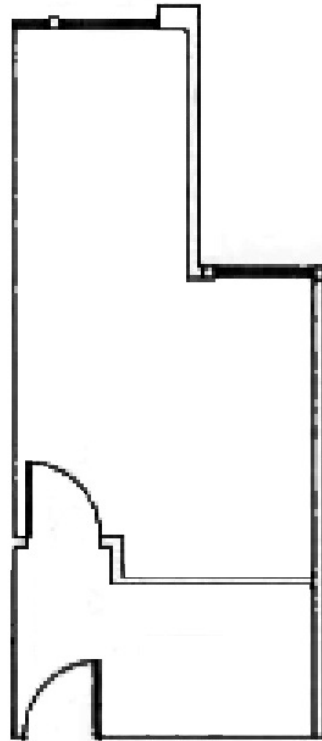


## PROPERTY FEATURES

- ❑ Prime Westlake location near retail and restaurants
- ❑ Ideal for small office tenants
- ❑ High-speed fiber-optic internet available
- ❑ Abundant parking available
- ❑ Convenient access to Ventura (101) Freeway

## AVAILABILITY

FLOOR	SUITE	SIZE	RATE	AVAILABILITY
1	105	385 RSF	\$2.00/SF, MG	VACANT
2	202	752 RSF	\$1.95/SF, MG	VACANT



**SUITE FEATURES**

- New LED lights
- New paint of your choosing
- Separately metered

\*Not to Scale

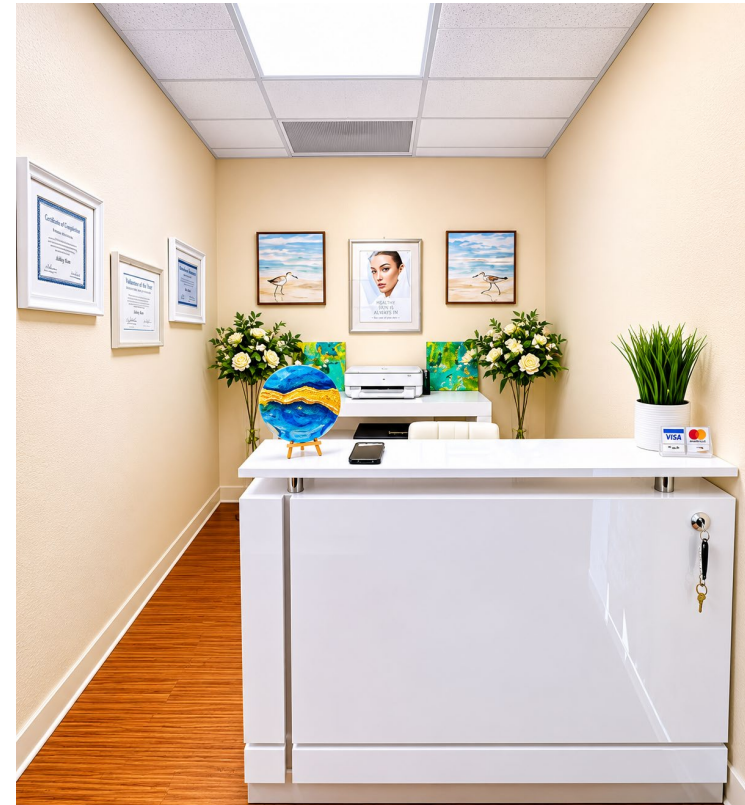
FLOOR	SUITE	SIZE	RATE	AVAILABILITY
1	105	385 RSF	\$2.00/SF, MG	VACANT

**Evelyn Hamilton**  
 818.742.1646  
 ehamilton@naicapital.com  
 CA DRE #01925029

No warranty, express or implied, is made as to the accuracy of the information contained herein. This information is submitted subject to errors, omissions, change of price, rental or other conditions, withdrawal without notice, and is subject to any special listing conditions imposed by our principals. Cooperating brokers, buyers, tenants and other parties who receive this document should not rely on it, but should use it as a starting point of analysis, and should independently confirm the accuracy of the information contained herein through a due diligence review of the books, records, files and documents that constitute reliable sources of the information described herein. Logos are for identification purposes only and may be trademarks of their respective companies. NAI Capital Commercial, Inc. CAL DRE Lic. #02130474

# HEATHERLY BUILDING

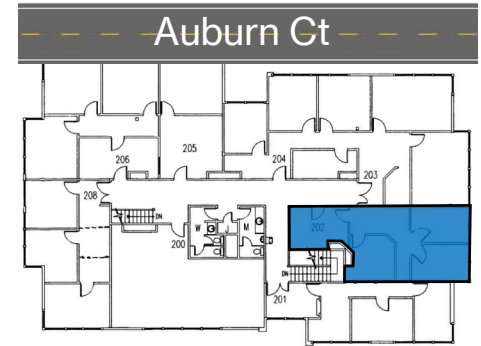
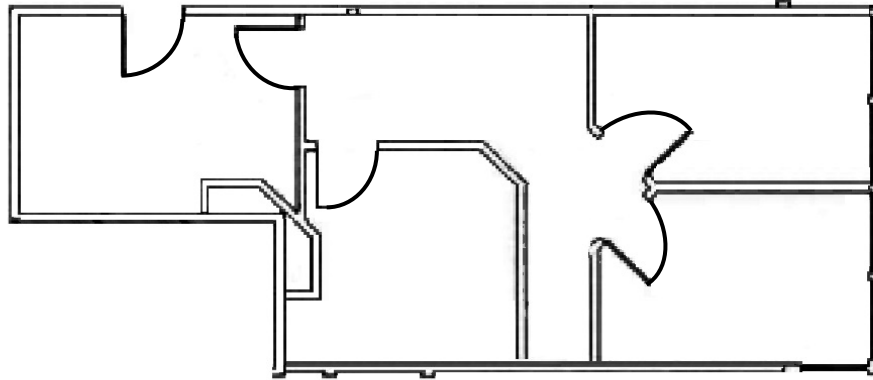
128 Auburn Ct, Westlake Village, CA 91362



FLOOR	SUITE	SIZE	RATE	AVAILABILITY
1	105	385 RSF	\$2.00/SF, MG	VACANT

**Evelyn Hamilton**  
 818.742.1646  
 ehamilton@naicapital.com  
 CA DRE #01925029

No warranty, express or implied, is made as to the accuracy of the information contained herein. This information is submitted subject to errors, omissions, change of price, rental or other conditions, withdrawal without notice, and is subject to any special listing conditions imposed by our principals. Cooperating brokers, buyers, tenants and other parties who receive this document should not rely on it, but should use it as a starting point of analysis, and should independently confirm the accuracy of the information contained herein through a due diligence review of the books, records, files and documents that constitute reliable sources of the information described herein. Logos are for identification purposes only and may be trademarks of their respective companies. NAI Capital Commercial, Inc. CAL DRE Lic. #02130474



**SUITE FEATURES**

- New LED lights
- New paint of your choosing
- Separately metered

\*Not to Scale

FLOOR	SUITE	SIZE	RATE	AVAILABILITY
2	202	752 RSF	\$1.95/SF, MG	VACANT

**Evelyn Hamilton**  
 818.742.1646  
 ehamilton@naicapital.com  
 CA DRE #01925029

No warranty, express or implied, is made as to the accuracy of the information contained herein. This information is submitted subject to errors, omissions, change of price, rental or other conditions, withdrawal without notice, and is subject to any special listing conditions imposed by our principals. Cooperating brokers, buyers, tenants and other parties who receive this document should not rely on it, but should use it as a starting point of analysis, and should independently confirm the accuracy of the information contained herein through a due diligence review of the books, records, files and documents that constitute reliable sources of the information described herein. Logos are for identification purposes only and may be trademarks of their respective companies. NAI Capital Commercial, Inc. CAL DRE Lic. #02130474

# HEATHERLY BUILDING

128 Auburn Ct, Westlake Village, CA 91362



**Evelyn Hamilton**  
818.742.1646  
ehamilton@naicapital.com  
CA DRE #01925029

No warranty, express or implied, is made as to the accuracy of the information contained herein. This information is submitted subject to errors, omissions, change of price, rental or other conditions, withdrawal without notice, and is subject to any special listing conditions imposed by our principals. Cooperating brokers, buyers, tenants and other parties who receive this document should not rely on it, but should use it as a starting point of analysis, and should independently confirm the accuracy of the information contained herein through a due diligence review of the books, records, files and documents that constitute reliable sources of the information described herein. Logos are for identification purposes only and may be trademarks of their respective companies. NAI Capital Commercial, Inc. CAL DRE Lic. #02130474

# HEATHERLY BUILDING

128 Auburn Court  
Westlake Village, CA 91362

**NAI**Capital  
COMMERCIAL REAL ESTATE SERVICES, WORLDWIDE

**FOR LEASE**

Small Office Suites Available

**Evelyn Hamilton**

818.742.1646

[ehamilton@naicapital.com](mailto:ehamilton@naicapital.com)

CA DRE #01925029

No warranty, express or implied, is made as to the accuracy of the information contained herein. This information is submitted subject to errors, omissions, change of price, rental or other conditions, withdrawal without notice, and is subject to any special listing conditions imposed by our principals. Cooperating brokers, buyers, tenants and other parties who receive this document should not rely on it, but should use it as a starting point of analysis, and should independently confirm the accuracy of the information contained herein through a due diligence review of the books, records, files and documents that constitute reliable sources of the information described herein. Logos are for identification purposes only and may be trademarks of their respective companies. NAI Capital Commercial, Inc. CAL DRE Lic. #02130474