

# 3280

CORPORATE VIEW

FOR SALE OR LEASE | 59,828 SF



INDUSTRIAL | MANUFACTURING



# PROPERTY OVERVIEW

IDEALLY LOCATED NEAR MANY PROMINENT TECH AND MANUFACTURING COMPANIES, ALONG WITH A MYRIAD OF RETAIL AND RESTUARANT AMENITIES, 3280 CORPORATE VIEW PROVIDES EASY ACCESS TO INTERSTATE 5 AND MCCLELLAN-PALOMAR AIRPORT.

PROPERTY ADDRESS

**3280 CORPORATE VIEW, VISTA CA, 92081**

RENTABLE BUILDING AREA

**±59,828 SF**

2ND FLOOR OFFICE SPACE

**±5,426 SF**

CLEAR HEIGHT

**24'**

PARKING

**1.77/1,000  
(106 SPACES)**

DOCK-LEVEL LOADING

**3**

GRADE-LEVEL LOADING

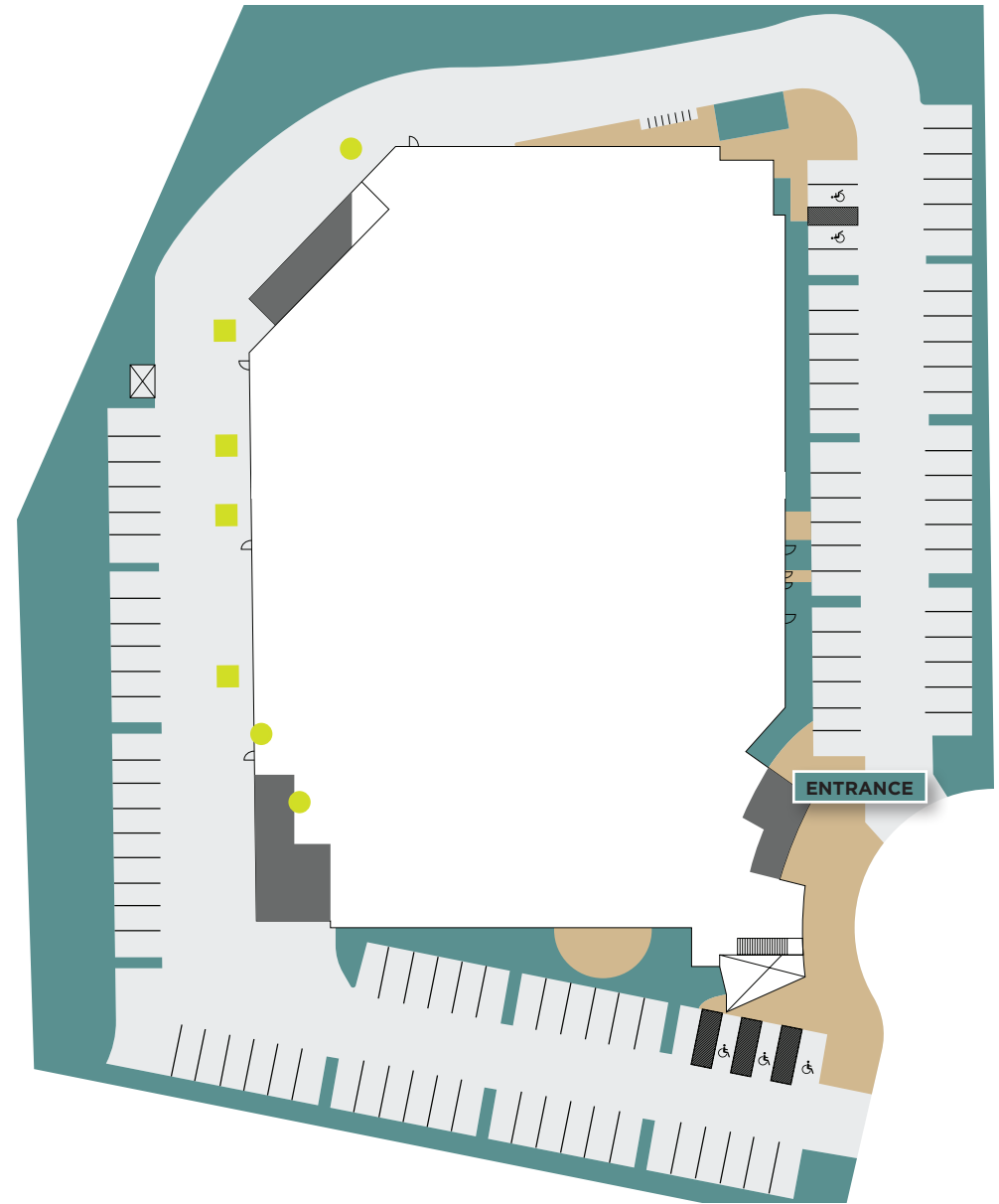
**4**

POWER

**2,000A 277/480V**

SPRINKLERS

**YES**

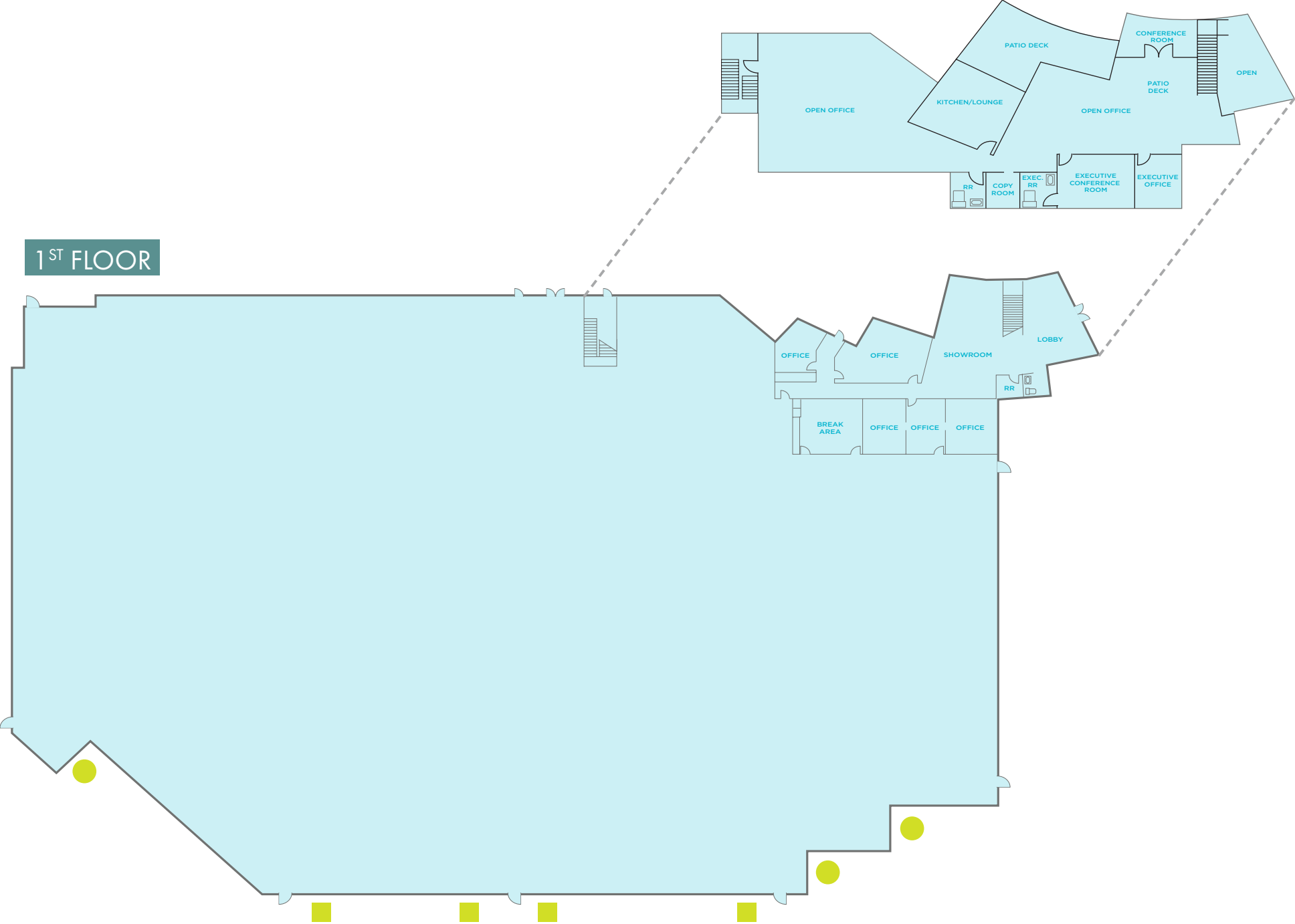


▲ DOCK-HIGH DOOR ○ GRADE-LEVEL DOOR

# FLOOR PLANS

## 2<sup>ND</sup> FLOOR

## 1<sup>ST</sup> FLOOR



# EXTERIOR IMAGES



# EXTERIOR IMAGES



# AREA AMENITIES



Carlsbad Outlets  
Costco Shopping Center  
Grand Pacific Palisades Resort  
Legoland California Resort  
The Crossings at Carlsbad  
Residence Inn by Marriott  
McClellan-Palomar Airport  
Homewood Suites Hampton Inn  
Lowe's Shopping Center  
Staples Shopping Center

Holiday Inn  
Bressi Ranch Village Center  
Hyatt Place  
Park Hyatt Aviara Resort  
La Costa Resort & Spa  
Home Depot Shopping Center  
The Flower Fields  
Ponto Beach  
Tamarack Beach  
South Carlsbad State Beach

Batiquitos Lagoon  
Carlsbad Village  
Target  
Walmart  
Palomar College  
California State San Marcos  
Tri City Medical  
Palomar Medical  
Restaurant Row  
North City

# DRIVE TIMES



**7 MINUTES/  
2.5 MILES**  
HWY 78



**8 MINUTES/  
3.5 MILES**  
PALOMAR AIRPORT



**14 MINUTES/  
6.3 MILES**  
I-5



**14 MINUTES/  
7.5 MILES**  
I-15



**16 MINUTES/  
6.9 MILES**  
BEACH TERRACE



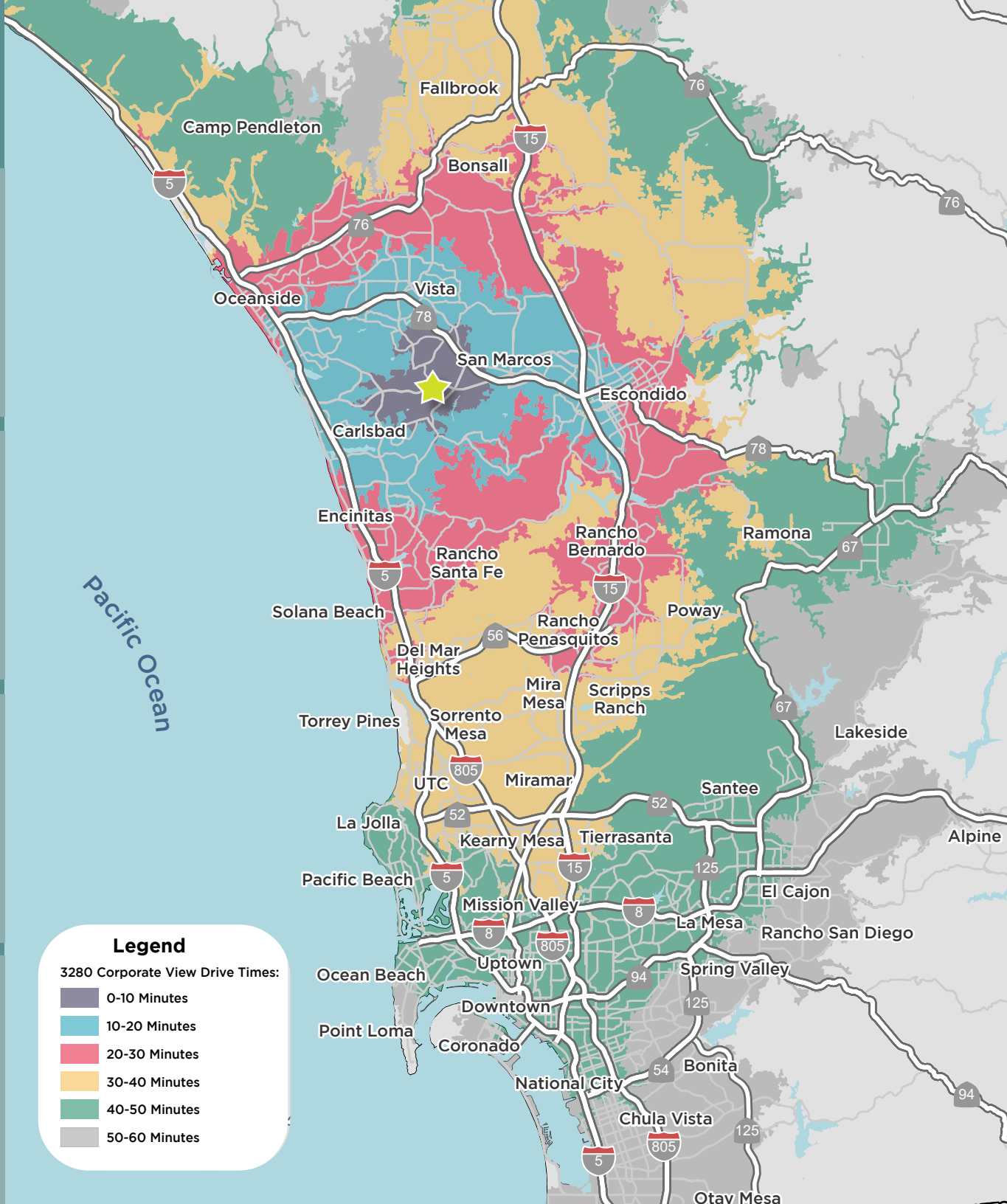
**45 MINUTES/  
37.5 MILES**  
DOWNTOWN



**53 MINUTES/  
41 MILES**  
US/MEXICO BORDER



**1 HOUR/  
63 MILES**  
ORANGE COUNTY



**Legend**  
3280 Corporate View Drive Times:

- 0-10 Minutes
- 10-20 Minutes
- 20-30 Minutes
- 30-40 Minutes
- 40-50 Minutes
- 50-60 Minutes

3280

**ARIC STARCK**

Executive Vice Chairman

+1 760 431 4211

[aric.starck@cushwake.com](mailto:aric.starck@cushwake.com)

LIC #01325461

**DREW DODDS**

Senior Associate

+1 760 431 3863

[drew.dodds@cushwake.com](mailto:drew.dodds@cushwake.com)

LIC #02021095

