

AIR PARK DRIVE

GATEWAY DRIVE

PO (12)

PO

(16)

GB

GB

143,298 sf

PB

1,077,372 sf

MR-10

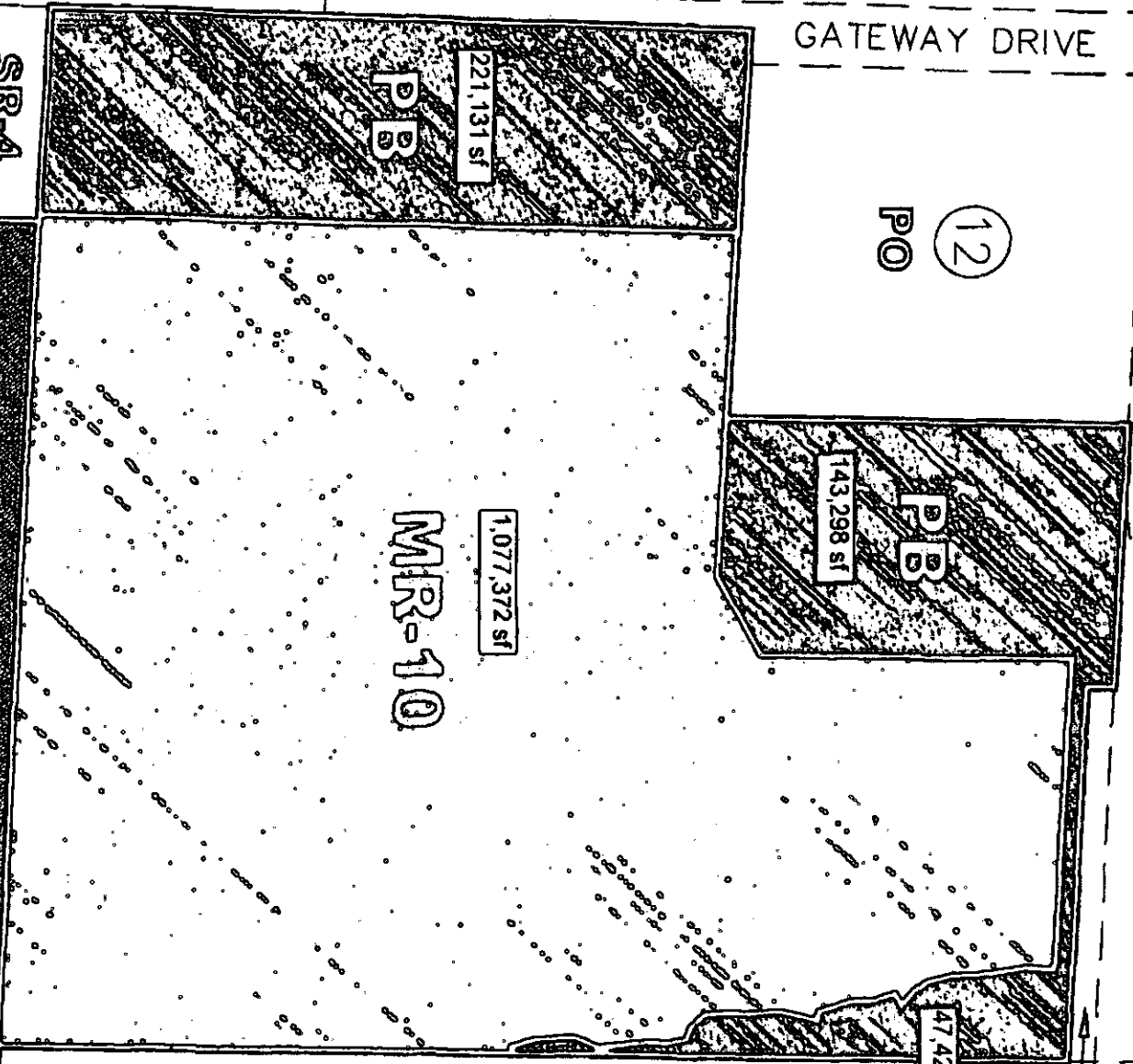
RH

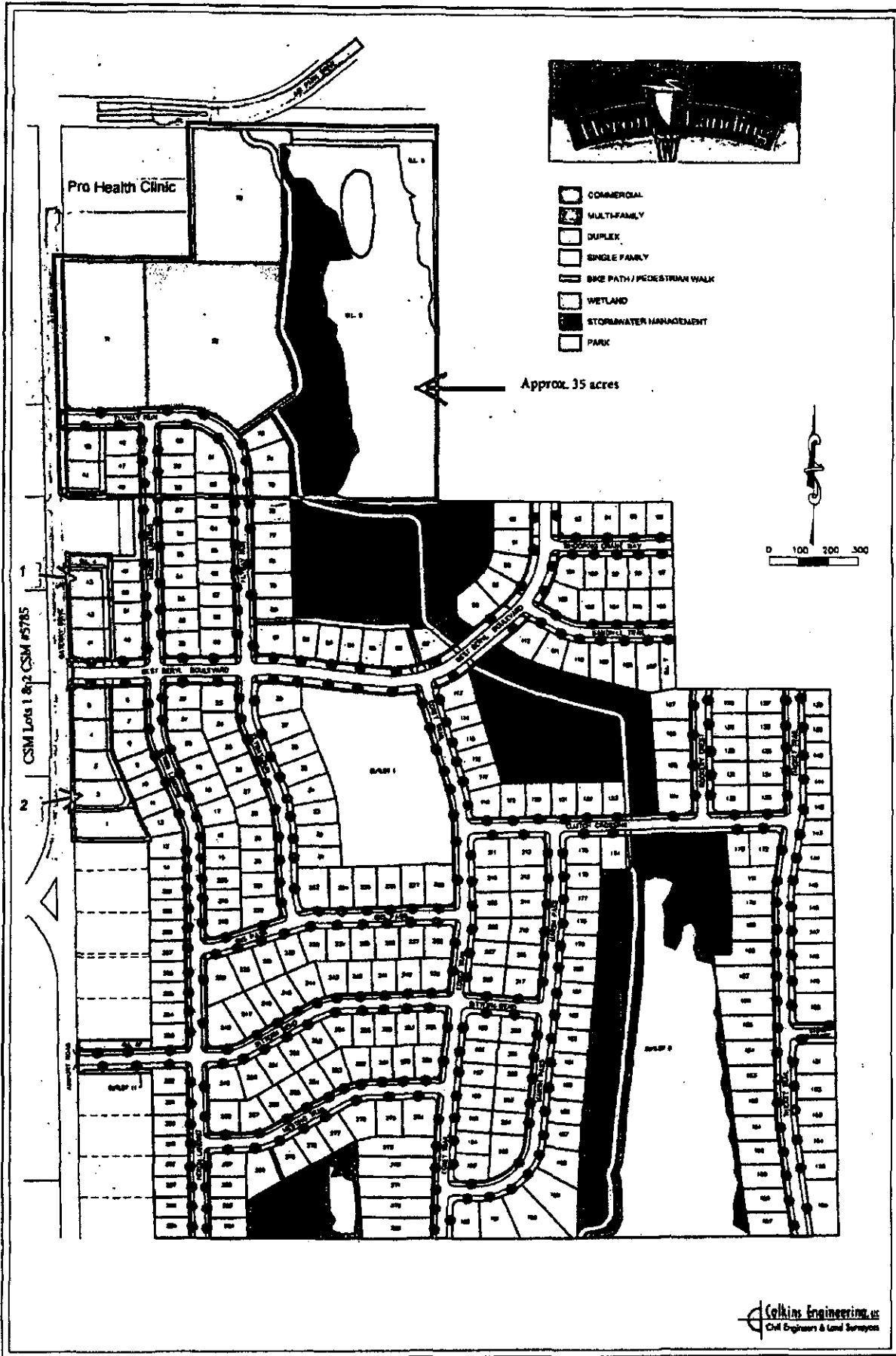
221,131 sf

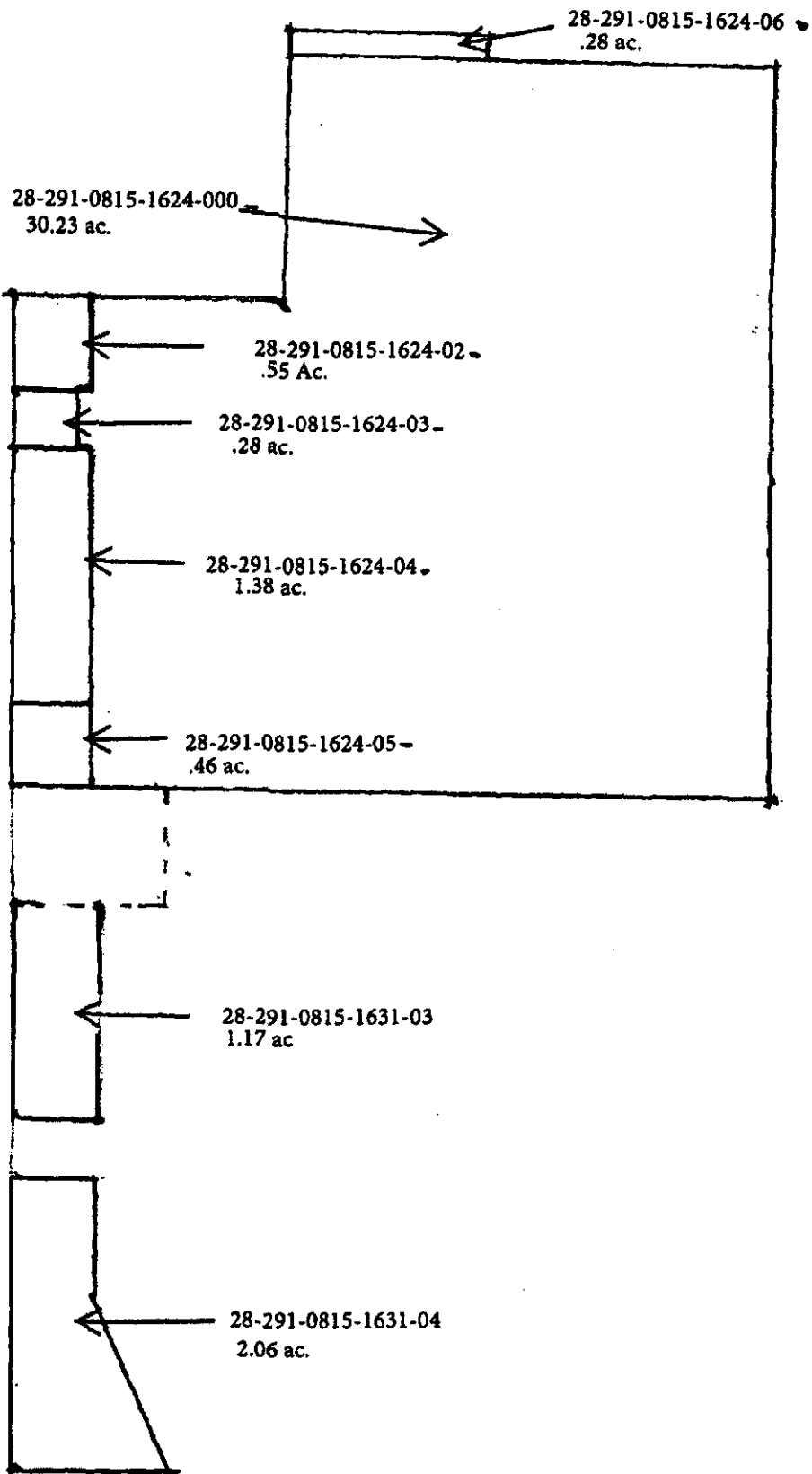
PB

SR-4

47,420 sf







28-291-0815-1624-06
.28 ac.

28-291-0815-1624-000
30.23 ac.

28-291-0815-1624-02
.55 ac.

28-291-0815-1624-03
.28 ac.

28-291-0815-1624-04
1.38 ac.

28-291-0815-1624-05
.46 ac.

300

28-291-0815-1631-03
1.17 ac.

400

28-291-0815-1631-04
2.06 ac.