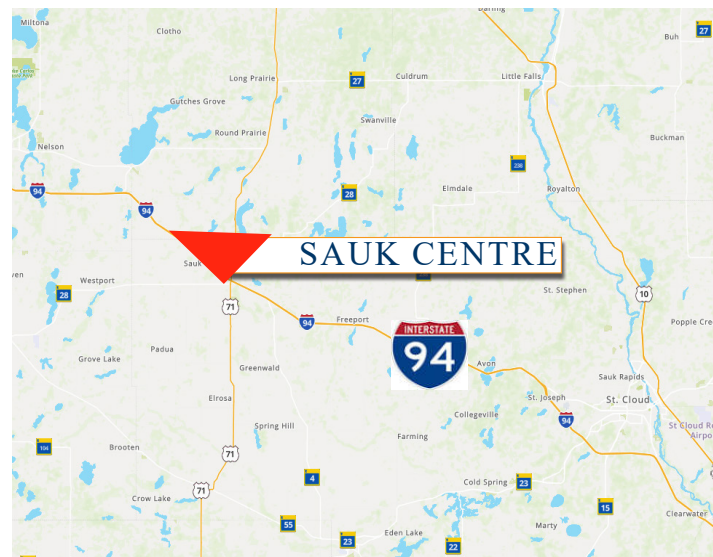




## **PROPERTY INFORMATION**

- \* Sales Price ~~\$159,000.00~~  
Reduced to **\$129,000.00**
- \* Lot is 1.15 Acres
- \* Stearns County
- \* PID 94.58045.0003 2024 Taxes \$2,713.85
- \* Zoned: C2
- \* Businesses in Area Include:  
Holiday Stationstore, O'Reilly Auto Parts, Coborn's,  
Central MN Credit Union, Westside Liquor, AmericInn,  
Stearns County Fairgrounds, McDonald's, Boyer Motors,  
Dairy Queen Grill & Chill, Dollar Tree and more.



**Contact:**  
**WAYNE ELAM**  
**(763) 229-4982**  
**WElam@crs-mn.com**



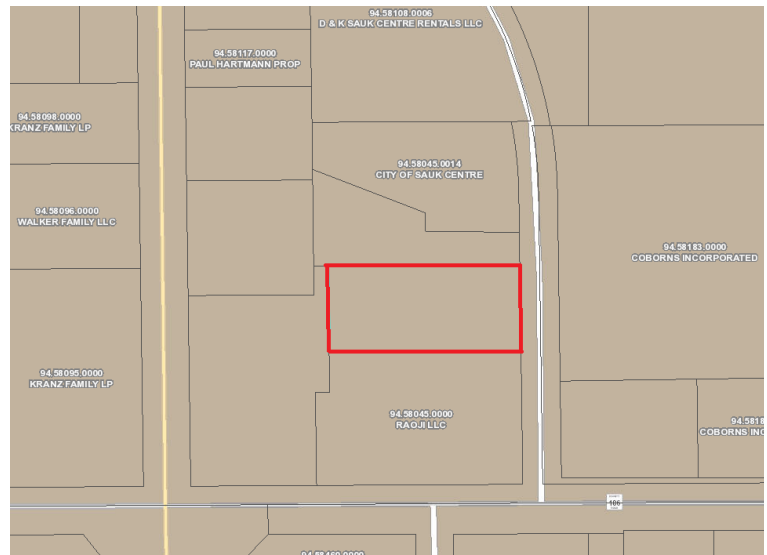
COMMERCIAL REALTY SOLUTIONS

# For Sale Commercial Land Parcel 1142 Fairlane Drive, Sauk Centre 56378



## LOCATION INFORMATION

- \* Located 1 Block East of Hwy 71
- \* Easy Access to US Hwy 10 and US Hwy 23
- \* North Side of I-94
- \* Conveniently Located Near Many Services



## TRAFFIC COUNTS - 2023

- \* Main Street/Hwy 71 - 9,900 VPD
- \* 12th Street - 7,800 VPD

**Contact:**  
**WAYNE ELAM**  
**(763) 229-4982**  
**WElam@crs-mn.com**

3 Highway 55 West, Buffalo, MN 55313-4320 | 763-682-2400 | info@crs-mn.com

**For Sale**  
**Commercial Land Parcel**  
**1142 Fairlane Drive, Sauk Centre 56378**



**Contact:**  
**WAYNE ELAM**  
**(763) 229-4982**  
**WElam@crs-mn.com**

3 Highway 55 West, Buffalo, MN 55313-4320 | 763-682-2400 | info@crs-mn.com