



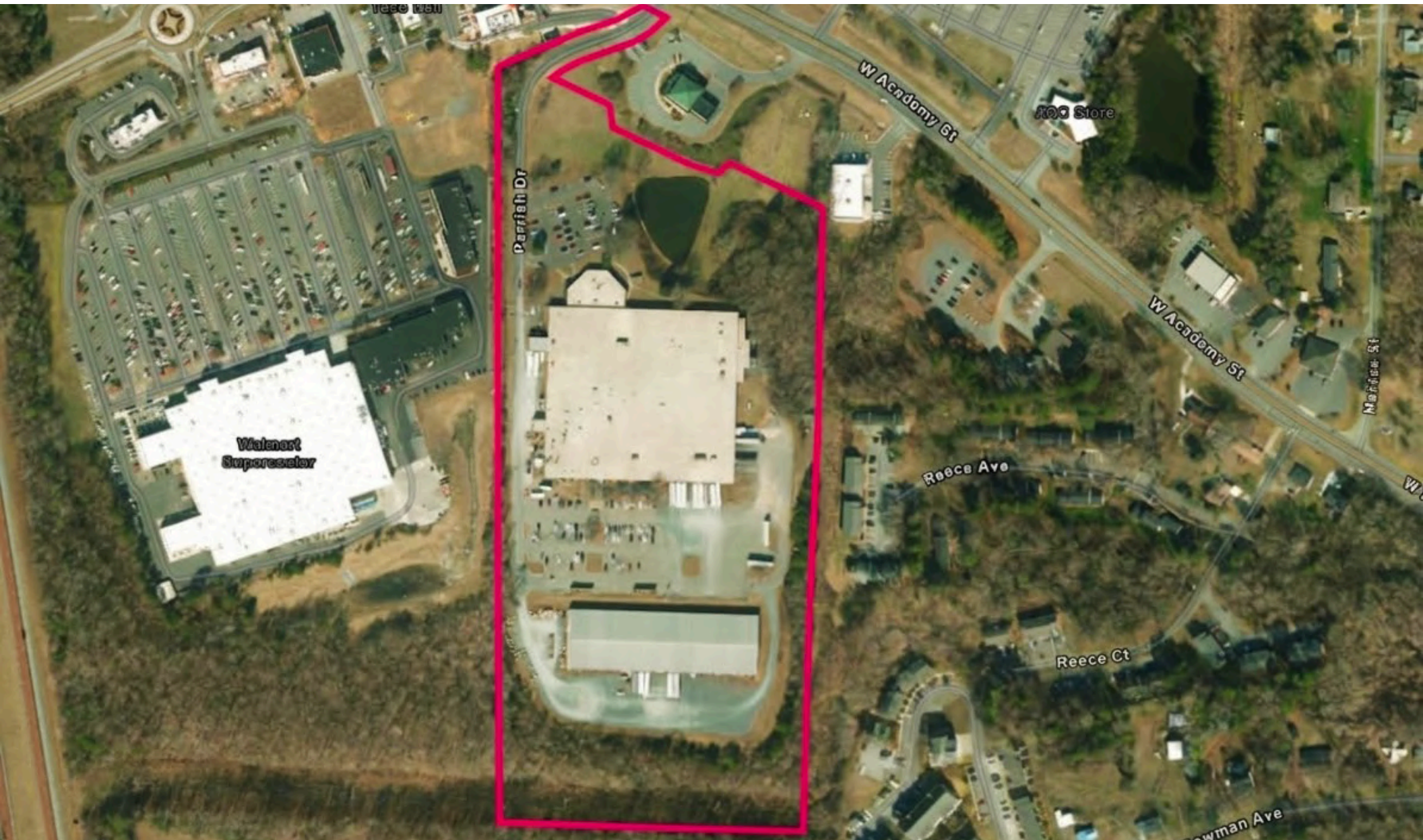
Available For Lease

**1 Parrish Dr,
Randleman, NC 27317**



Property Summary

1 Parrish Dr, Randleman, NC 27317 offers 200,000 SF of industrial warehouse/manufacturing space on a 7-acre site. The property consists of two buildings, including a 150,000 SF front building and a 50,000 SF rear building, providing flexibility for single or multi-user occupancy. Featuring 30 dock-high doors and a 16' clear height, the facility is well-suited for distribution or manufacturing operations. Classified as a Class B industrial asset, the property offers strong functionality in a growing North Carolina industrial market.



PROPERTY SPECS

Address: 1 Parrish Dr, Randleman NC

Type: Industrial Warehouse/Manufacturing

Total SF: 200,000 (150,000 For the Front Building, and 50,000 in the Back)

Acreage: 7

Dock Doors: 30

Clear Height: 16'

Building Class: B





Prime Industrial Location - Randleman, NC

1 Parrish Drive is strategically positioned within the Piedmont Triad's growing industrial corridor, offering strong connectivity to central North Carolina's key transportation networks. The property benefits from immediate proximity to US-311 and quick access to I-73/I-74 and I-85, enabling efficient regional distribution throughout High Point, Greensboro, and Asheboro, as well as direct routes to Charlotte and Raleigh. Located within a market known for manufacturing, distribution, and logistics activity, the site is well-suited for warehousing, light manufacturing, service operations, and regional distribution users. Its proximity to Piedmont Triad International Airport, established industrial parks, and surrounding residential communities supports strong workforce accessibility and operational efficiency within one of the Southeast's most active industrial regions.

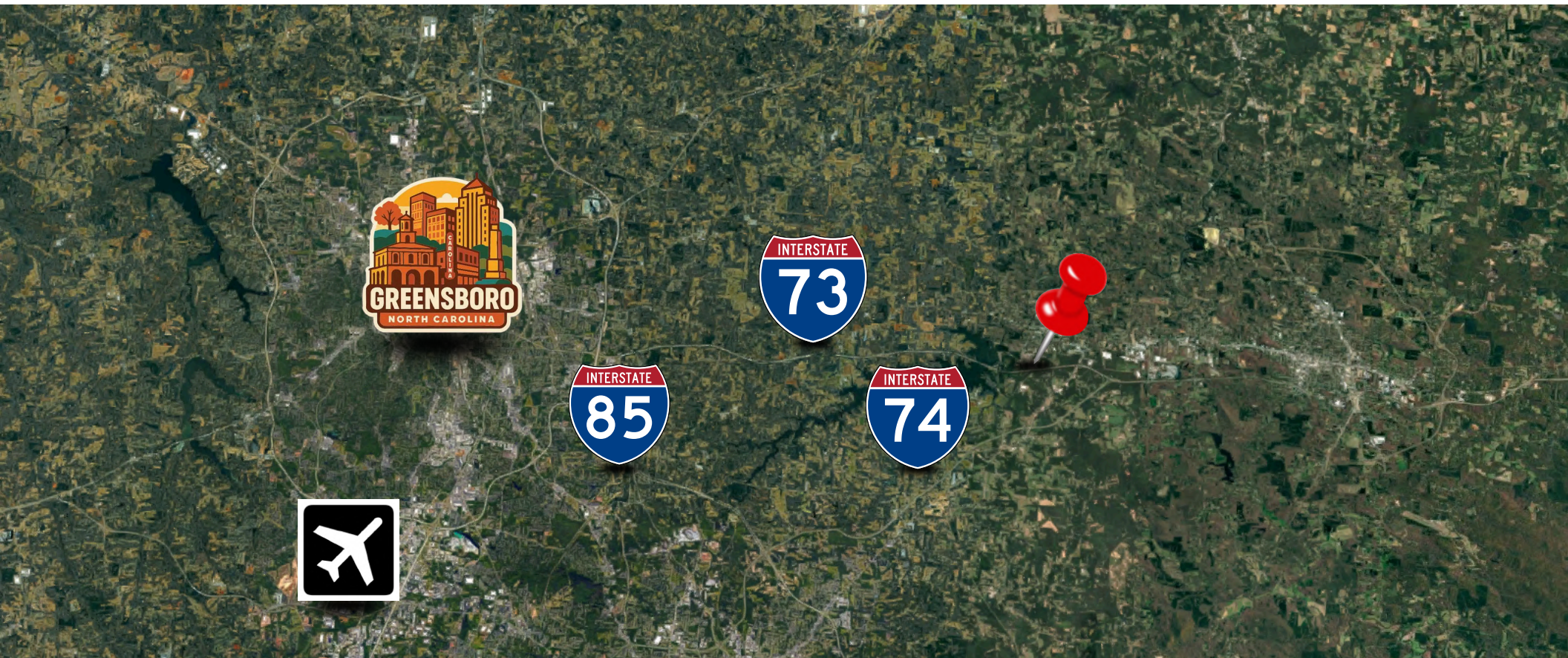
Distances

I-73: 1.3 miles

I-85: 2.0 miles

US-311: 4.0 miles

Greensboro, NC: 18 miles





Joe Cummings



Acquisitions Officer



315-980-9912



Jcummings@IronHornEnterprises.com

Available For Lease

**1 Parrish Dr,
Randleman, NC 27317**

