

For Lease

TANASBOURNE PROFESSIONAL CENTER II

17885 NW EVERGREEN PKY
BEAVERTON, OR 97006





Second story corner suite offered with competitive tenant improvement package, ample parking, exterior and monument signage options.

SF AVAILABLE	1,442 SF
BUILDING SIZE	20,000 SF
PARKING	4.2/1,000 parking ratio
SIGNAGE	Available
YEAR BUILT	2013
CO TENANTS	Kaiser Permanente Clearview MRI Biermann Orthodontics Athenix Body Sculpting

1,442 SF
AVAILABLE

\$24.00
LEASE RATE / SF NNN



CONVENIENT
LOCATION
NEAR MAJOR
THOROUGHFARES



WEST FACING
CORNER SUITE



15+ MINUTES
TO DOWNTOWN
PORTLAND

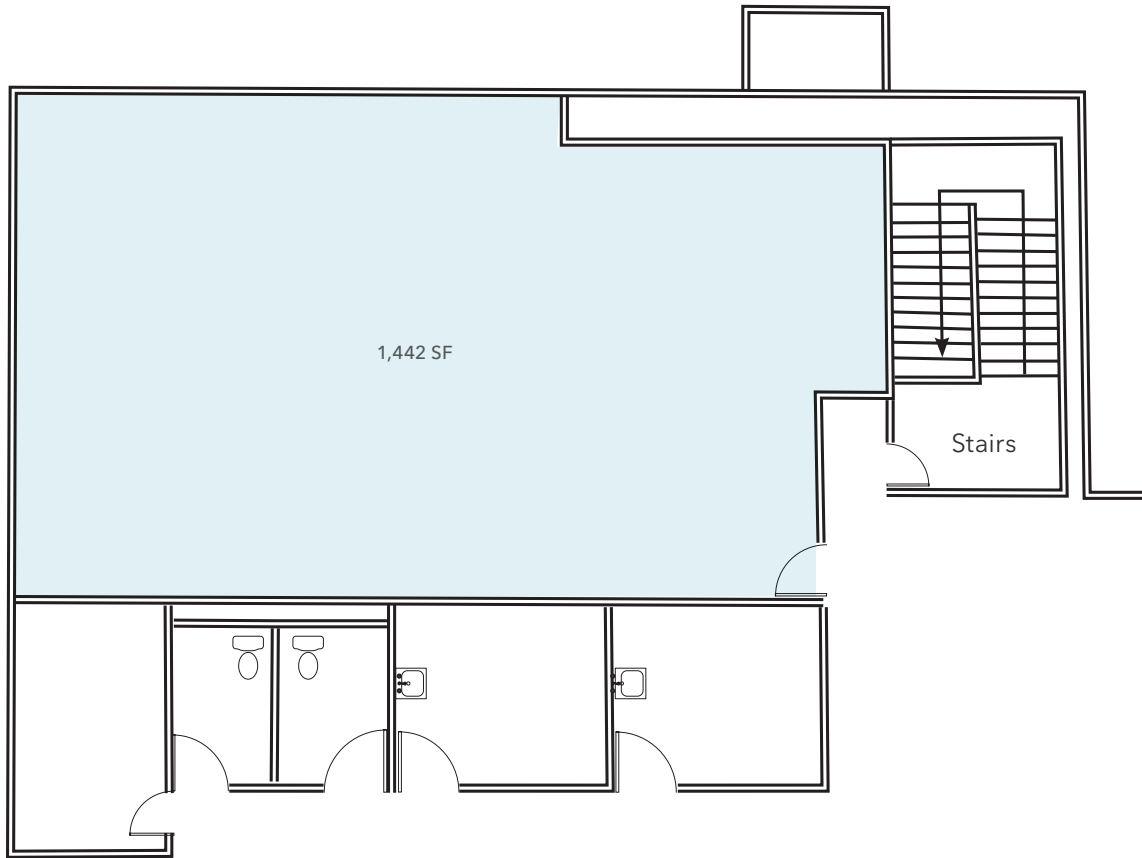


ABUNDANT
PARKING
AVAILABLE



*The suite is in “white boxed”
condition, ready for tenant-
specific build-out*

FLOOR PLAN



*Not to scale



Minimal columns for maximum flexibility in space design and planning and a low window sill allow an abundance of natural light to enter deep into the space

HIGHLY- ACCESSIBLE LOCATION

Located in an existing medical community adjacent to Tanasbourne Shopping Center.

Close proximity to Highways 26 and 217, Providence, Kaiser and Legacy.

Sunset Corridor Suburban Location.

Only 13 miles from downtown Portland and within five minutes from the Hillsboro Airport.

1 MIN

TANASBOURNE CENTER

15+ MIN

PORTLAND CBD



17885 NW EVERGREEN PKY



Exclusively leased by

RYAN O'LEARY
503.221.2294
ryan.oleary@kidder.com

REBECCA LIDDELL, CCIM
503.221.2279
rebecca.liddell@kidder.com

KIDDER.COM

This information supplied herein is from sources we deem reliable. It is provided without any representation, warranty, or guarantee, expressed or implied as to its accuracy. Prospective Buyer or Tenant should conduct an independent investigation and verification of all matters deemed to be material, including, but not limited to, statements of income and expenses. Consult your attorney, accountant, or other professional advisor.

