

THE PROFESSIONAL OFFICES AT
BARCLAY PARK
NOW LEASING



ELEVATE YOUR WORKDAY &
IMPRESS YOUR CLIENTS AT
535 NORTH CHURCH STREET, WEST CHESTER, PA

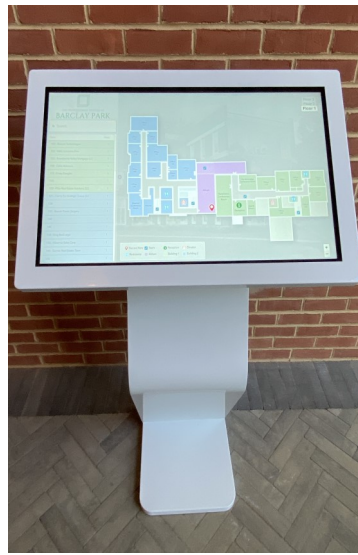


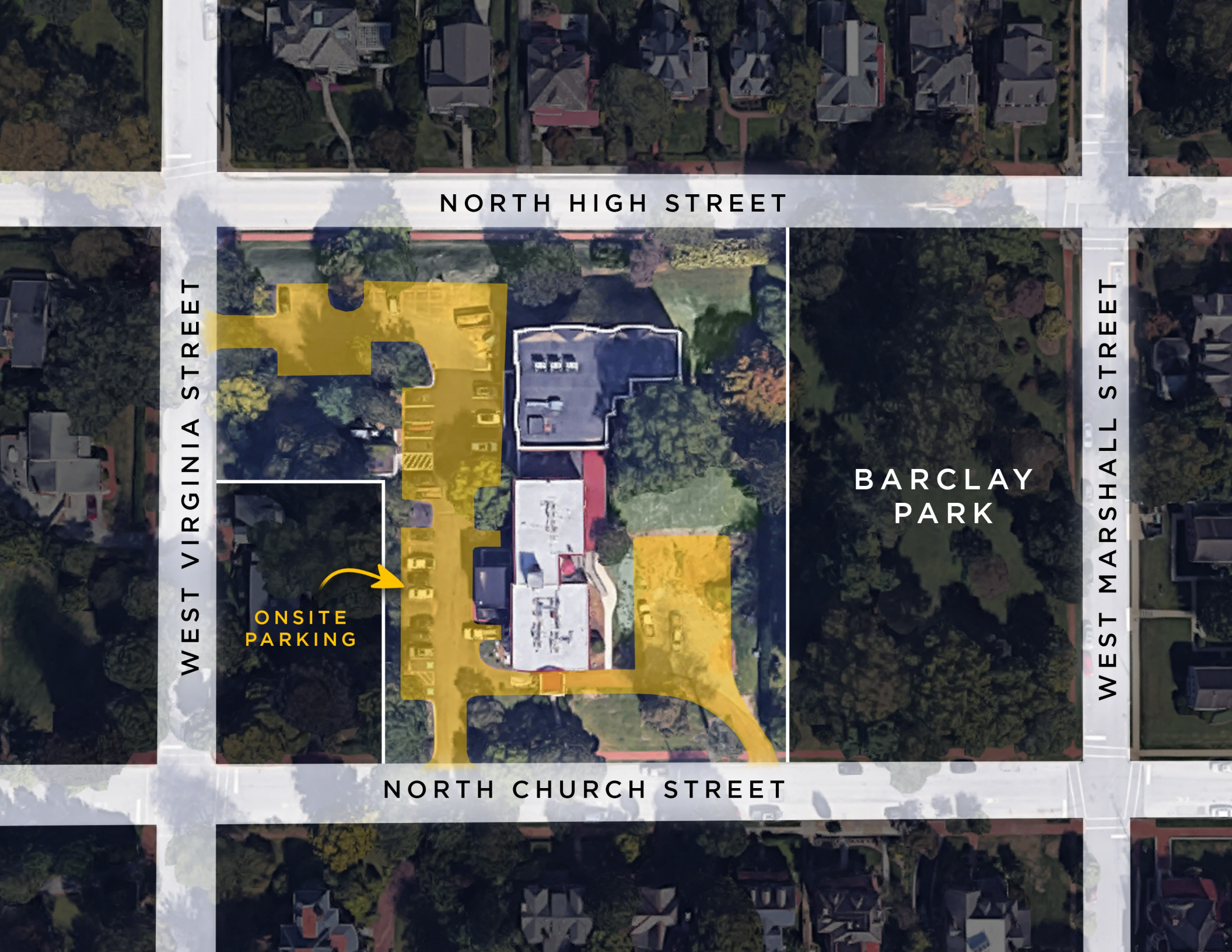
THE PROFESSIONAL OFFICES AT
BARCLAY PARK

- High End Finishes with Historical Accents
- Abundant Natural Light
- Individually temperature controlled offices
- Fully ADA Compliant
- Secured Entry with 24/7 Access
- Interactive Directory
- Elevator Serviced
- Secured Mailroom with Vending, ATM, and Shredding Services
- Kitchen and multiple conference rooms available for Tenant use
- Ample Parking in Onsite Parking Lots
- One Block from West Chester Country Club - Tennis and Golf
- Walking distance to Downtown West Chester - Restaurants and Retail
- All inclusive Lease Rates: Includes Utilities, CAM, and Parking

RICH WITH CHARACTER

WITH A WEALTH OF AMENITIES





NORTH HIGH STREET

WEST VIRGINIA STREET

ONSITE
PARKING

BARCLAY
PARK

WEST MARSHALL STREET

NORTH CHURCH STREET

ROUTE 202

MARKET STREET
GAY STREET

 Penn Medicine
Chester County
Hospital

MARSHALL
SQUARE
PARK



ROUTE 100 HIGH STREET


THE PROFESSIONAL OFFICES AT
BARCLAY PARK



DOWNTOWN WEST CHESTER

THE
SOCIAL
SOUTHERN SCRATCH KITCHEN & BAR



IRON HILL
BREWERY & RESTAURANT



EST. 1983
CARLINO'S
MAKERS & PURVEYORS OF ARTISAN FOOD

the
couch tomato

MERCATO
ristorante and bar
born in italy, served in west chester.



West Chester

p e n n s y l v a n i a

Chester, PA has a thriving business community. The town is conveniently located just 25 miles west of Philadelphia. West Chester is home to a variety of industries, including healthcare, finance, education, and technology. The town is also known for its historic downtown area, which features charming boutiques, local restaurants, and cultural attractions, creating a vibrant and engaging work environment.

In addition to its strong economy, West Chester is also known for its quality of life. The town boasts excellent public schools, beautiful parks, and a lively arts and entertainment scene. With its small-town feel and big-city amenities, West Chester offers a great work-life balance, allowing professionals to pursue their career goals while still enjoying a high quality of life. The town's friendly community and supportive business environment also make it an excellent place for networking and building professional connections.



@westchesterviews



JAKE JEWELL

(484) 887-8202 - EXT 105

JJEWELL@PILLARREALESTATEADVISORS.COM

ANDREW TURNER

(484) 887-8202 - EXT 102

ATURNER@PILLARREALESTATEADVISORS.COM

ERIC KUHN

(484) 887-8202 - EXT 101

EKUHN@PILLARREALESTATEADVISORS.COM

ANDREW CARLINO

(484) 887-8202 - EXT 103

ACARLINO@PILLARREALESTATEADVISORS.COM

"The information contained in this document has been obtained from sources believed reliable. While Pillar Real Estate Advisors, LLC does not doubt its accuracy, Pillar Real Estate Advisors, LLC. has not verified it and makes no guarantee, warranty or representation about it. It is your responsibility to independently confirm its accuracy and completeness. Any projections, opinions, assumptions or estimates used are for example only and do not represent the current or future performance of the property. The value of this transaction to you depends on several factors which should be evaluated by your tax, financial and legal advisors to determine to your satisfaction the suitability of the property for your needs. Photos are the property of their respective owners and use of these images without the express written consent of the owner is prohibited."