

14801B OXNARD STREET

VAN NUYS, CA 91411



Listing Brokers

Eric Seidenglanz

Vice President
d: 818.815.2426
eseidenglanz@naicapital.com
Cal DRE Lic #01975684

Chris Jackson

CEO
d: 818.933.2368
cjackson@naicapital.com
Cal DRE Lic #01255538

Todd Lorber

Executive Vice President
d: 818.933.2376
tlorber@naicapital.com
Cal DRE Lic #01014637

NAI Capital - Encino

15821 Ventura Blvd., Suite 320
Los Angeles, CA 91436
818.905.2400
www.naicapital.com

NAI Capital
COMMERCIAL REAL ESTATE SERVICES, WORLDWIDE



Property Highlights

Available for lease is a turnkey production studio. Prior occupants have used the facility for video production, live performance staging, virtual production, livestreaming, and podcasting. This facility offers entertainers the ability to operate nearly seamlessly upon moving in. The facility offers premium amenities such as; street level access, dressing room, Green and White Cyc walls, and a fully kitchen.

Located within minutes of the Sherman Oaks Galleria, I405, U.S. Route 101, and other amenities, this facility offers clients exceptional access to comfort and convenience.

Surrounded by other stages, recording studios, and creative uses, this facility offers occupants, a cohesive and synergistic environment.



PRODUCTION SPACE SIZE:

6,400 SF



PRICING:

\$11,200 MG



PARKING:

Twelve (12) Spaces



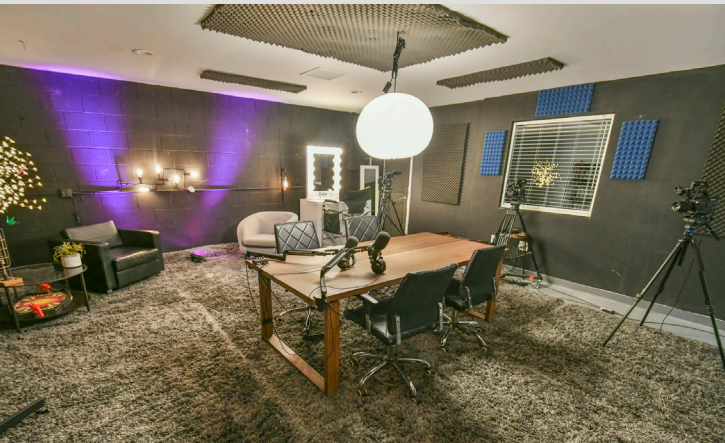
TURNKEY PRODUCTION FACILITY



PREMIUM AMENITIES:

- Turnkey Facility
- Wheelchair Accessible
- Green and White Cyc Walls
- Full Kitchen

Property Photos



14801B OXNARD STREET

VAN NUYS, CA 91411



Listing Brokers

Eric Seidenglanz

Vice President
d: 818.815.2426
eseidenglanz@naicapital.com
Cal DRE Lic #01975684

Chris Jackson

CEO
d: 818.933.2368
cjackson@naicapital.com
Cal DRE Lic #01255538

Todd Lorber

Executive Vice President
d: 818.933.2376
tlorber@naicapital.com
Cal DRE Lic #01014637

NAI Capital - Encino

15821 Ventura Blvd., Suite 320
Los Angeles, CA 91436
818.905.2400
www.naicapital.com

No warranty, express or implied, is made as to the accuracy of the information contained herein. This information is submitted subject to errors, omissions, change of price, rental or other conditions, withdrawal without notice, and is subject to any special listing conditions imposed by our principals. Cooperating brokers, buyers, tenants and other parties who receive this document should not rely on it, but should use it as a starting point of analysis, and should independently confirm the accuracy of the information contained herein through a due diligence review of the books, records, files and documents that constitute reliable sources of the information described herein. Logos are for identification purposes only and may be trademarks of their respective companies. NAI Capital, Inc. Cal DRE Lic. #02130474.