

309 S. MAIN STREET  
ROYAL OAK, MICHIGAN

OFFICE FOR LEASE  
2,500 Square Feet Available



**SIGNATURE  
ASSOCIATES**  
KNOW SIGNATURE | KNOW RESULTS

**PRIME ROYAL OAK LOCATION**



## PROPERTY FEATURES

- 2,500 square feet available
- Move in ready office space in prime Royal Oak location
- Kitchenette with coffee bar
- Signage available
- Creative loft feel with wood floors, open ceilings and windows which open onto Main Street
- Lease Rate: \$18.95/sq. ft. Gross + Electric



For more information, please contact:

**DAN MORROW**  
(248) 799 3144  
dmorrow@signatureassociates.com

**JEFFREY TREPECK**  
(248) 359 0626  
jtrepeck@signatureassociates.com

**SIGNATURE ASSOCIATES**  
One Towne Square, Suite 1200  
Southfield, MI 48076  
www.signatureassociates.com

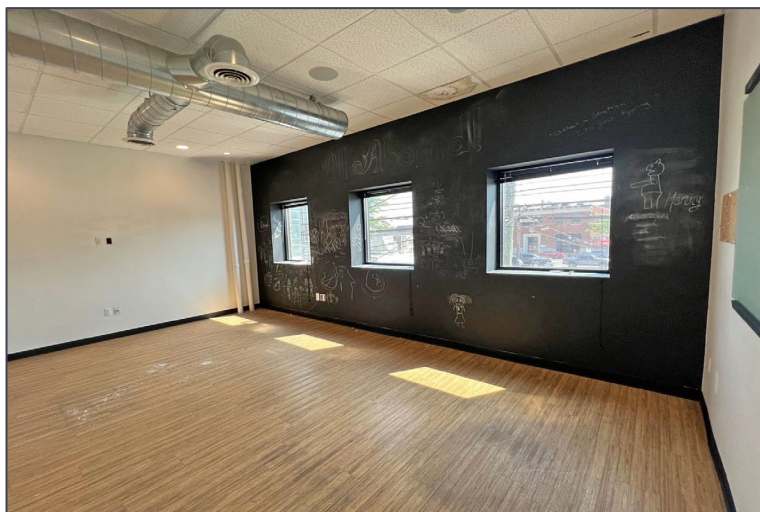


# 309 S. Main Street – Royal Oak, Michigan

## Office For Lease

2,500  
Square Feet  
AVAILABLE

### Interior Photos



For more information, please contact:

**DAN MORROW**  
(248) 799 3144  
dmorrow@signatureassociates.com

**JEFFREY TREPECK**  
(248) 359 0626  
jtrepeck@signatureassociates.com

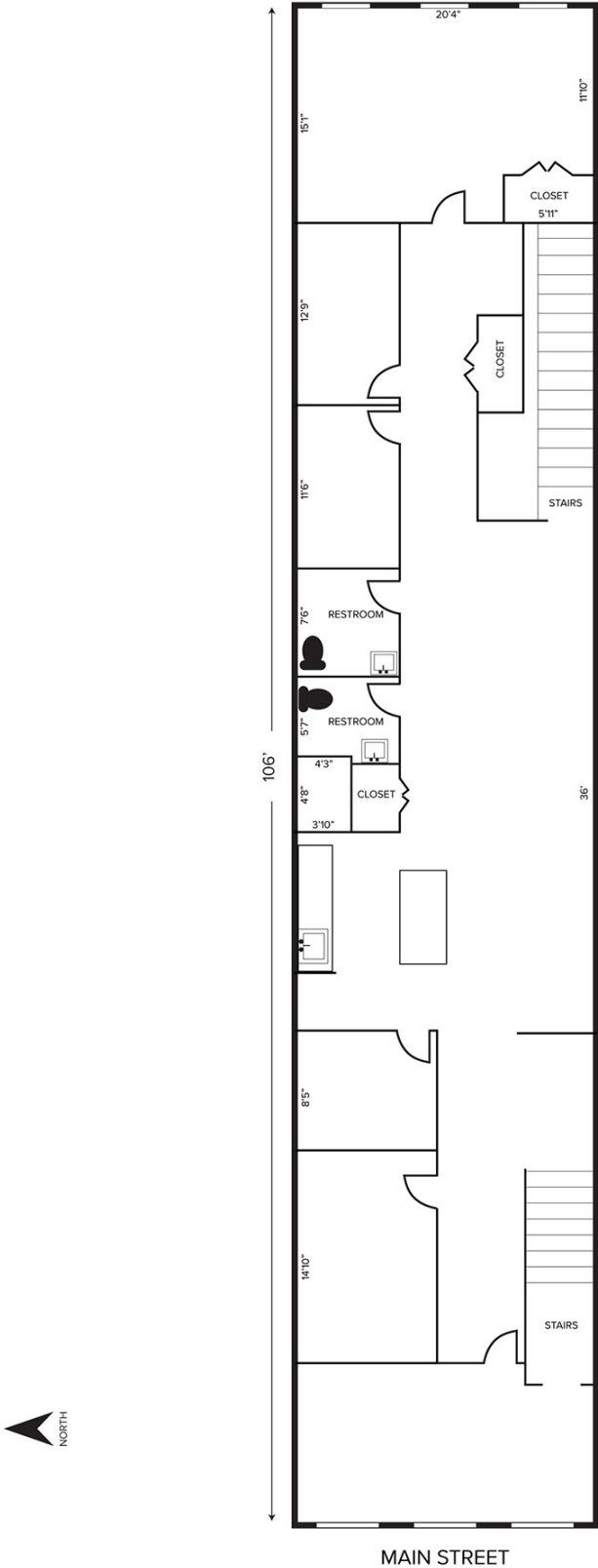
**SIGNATURE ASSOCIATES**  
One Towne Square, Suite 1200  
Southfield, MI 48076  
www.signatureassociates.com

Information is subject to verification and no liability for errors or omissions is assumed. Price is subject to change and listing withdrawal.

309 S. Main Street – Royal Oak, Michigan  
Office For Lease

2,500  
Square Feet  
AVAILABLE

Floor Plan



For more information, please contact:

**DAN MORROW**  
(248) 799 3144  
dmorrow@signatureassociates.com

**JEFFREY TREPECK**  
(248) 359 0626  
jtrepeck@signatureassociates.com

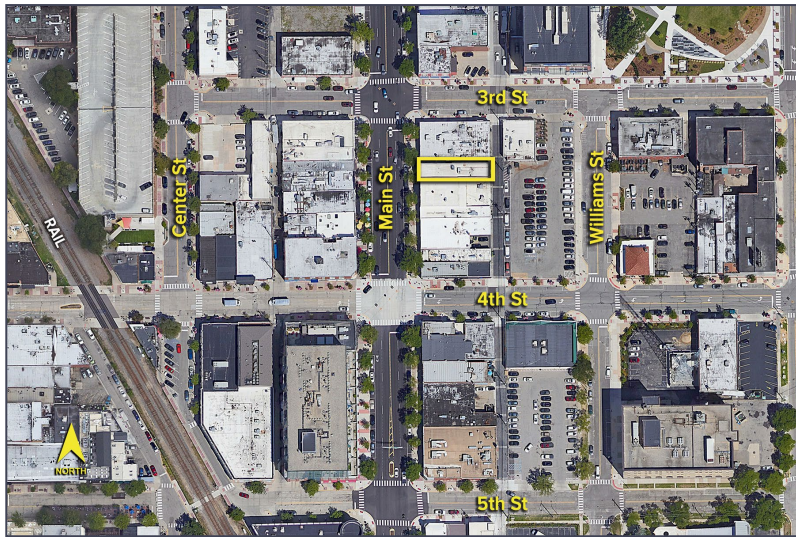
**SIGNATURE ASSOCIATES**  
One Towne Square, Suite 1200  
Southfield, MI 48076  
www.signatureassociates.com



# 309 S. Main Street – Royal Oak, Michigan

## Office For Lease

2,500  
Square Feet  
AVAILABLE

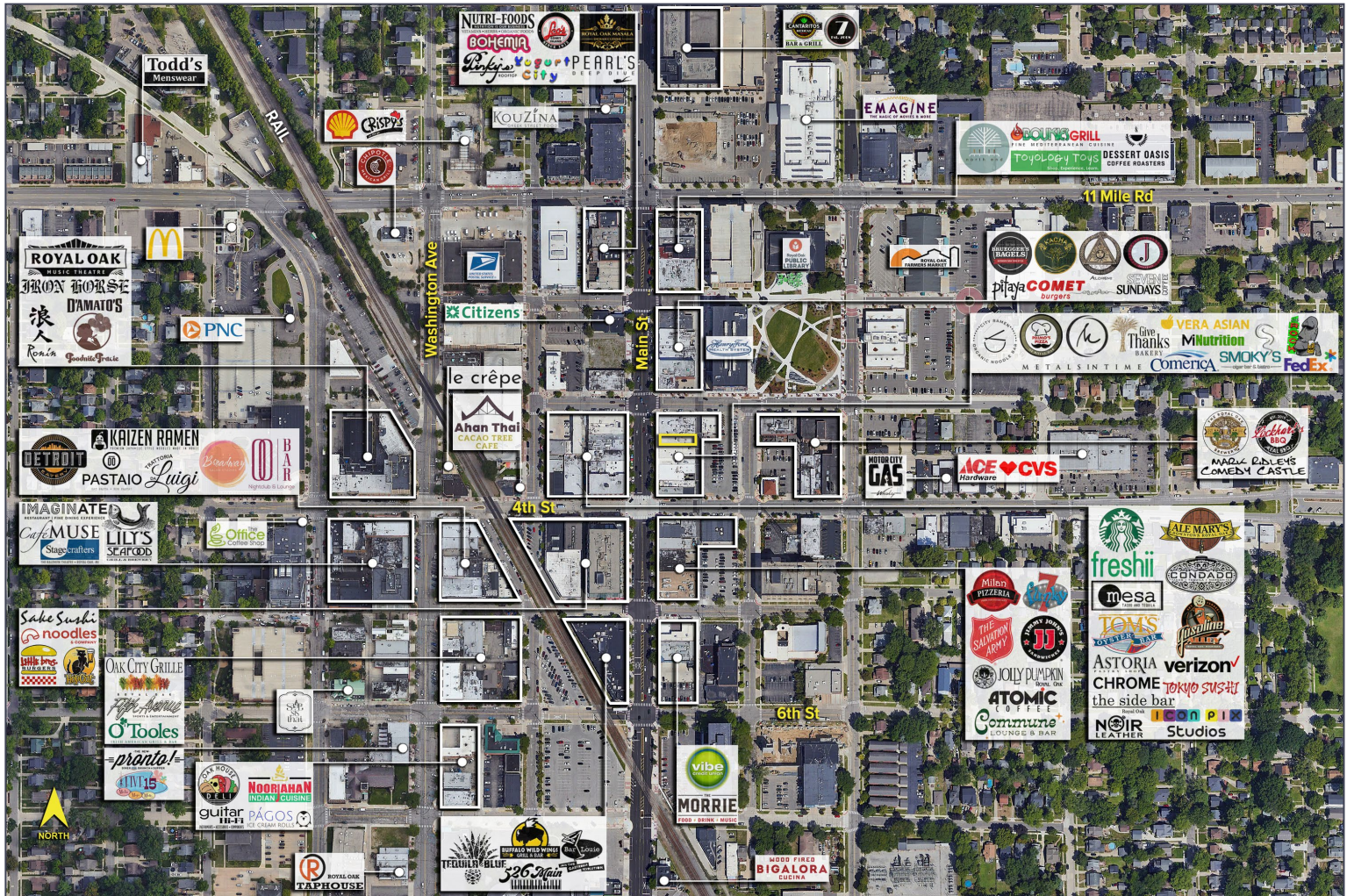


### DEMOGRAPHICS

	POPULATION	MED. HH INCOME
1 MILE	17,476	\$108,916
3 MILE	145,379	\$92,846
5 MILE	361,393	\$78,731

### TRAFFIC COUNTS (TWO-WAY)

18,449	S. Main St. N. of 4th St.
14,278	S. Main St. S. of 4th St.
4,424	4th St. E. of S. Main St.
3,997	4th St. W. of S. Main St.



For more information, please contact:

**DAN MORROW**  
(248) 799 3144  
dmorrow@signatureassociates.com

**JEFFREY TREPECK**  
(248) 359 0626  
jtrepeck@signatureassociates.com

**SIGNATURE ASSOCIATES**  
One Towne Square, Suite 1200  
Southfield, MI 48076  
www.signatureassociates.com