



1214 N Mead

1214 N Mead, Wichita, KS 67214



Kara Sandoval

Mirada Management Group, LC
423 N Saint Francis Ave, Wichita, KS 67202
MmgMgmt@gmail.com
(512) 766-1810

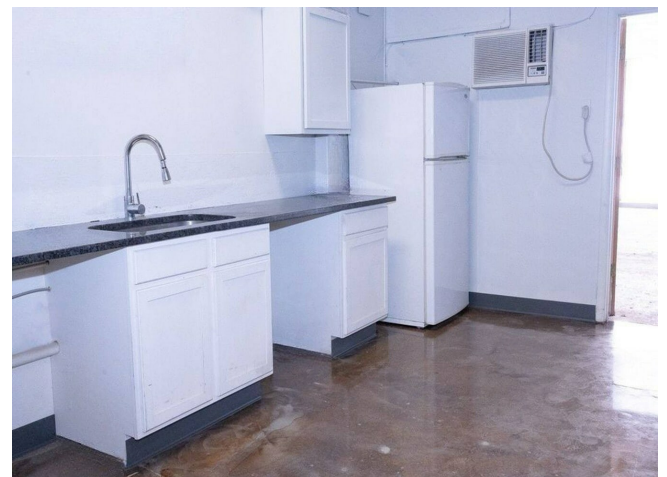
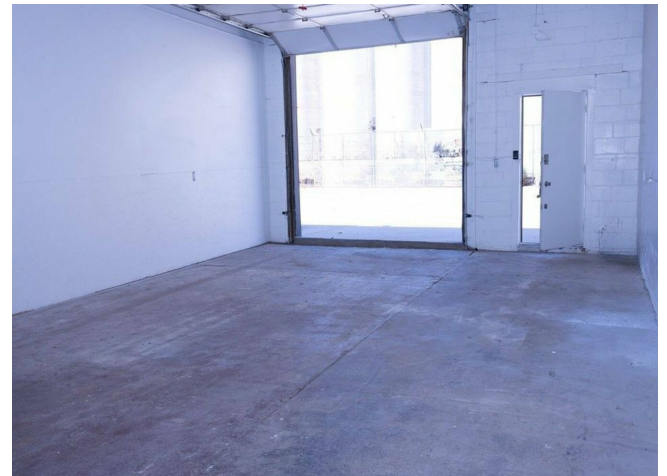


1214 N Mead

\$12.12 - \$18.60 /SF/YR

1214 N Mead is a centrally located flex industrial property offering a combination of warehouse/shop space with an on-site office build-out. The property features secure access, convenient on-site parking, and a flexible layout ideal for small businesses, trades, or light industrial users seeking functional, affordable workspace in Wichita....

- Centrally located in Wichita
- Flexible industrial
- Office
- Secure property with controlled access
- Functional warehouse / shop layout
- Local business friendly location



Rental Rate:	\$12.12 - \$18.60 /SF/YR
--------------	--------------------------

Property Type:	Industrial
----------------	------------

Rentable Building Area:	13,983 SF
-------------------------	-----------

Year Built:	1958
-------------	------

Rental Rate Mo:	\$1.21 /SF/MO
-----------------	---------------

1st Floor Ste 1214

Space Available	1,200 SF
Rental Rate	\$14.52 /SF/YR
Date Available	Now
Service Type	Modified Gross
Office Size	418 SF
Space Type	Relet
Space Use	Industrial
Lease Term	1 - 3 Years

1200 SF Conditioned Commercial Space for Rent! AVAILABLE MARCH 1ST 2026 Features: Size: 1200 SF Security Deposit: Power: Three-phase power available Doors: 10x10 ft insulated overhead door HVAC: Heat and cooled Private bathroom Good lighting condition Lease Term: 1-year commitment, yearly renewal Individually sub-metered gas, water, and electric for inexpensive and more accurate utility costs Access to 14,000 sq. ft., gated, lit, video monitored, and paved storage lot Equipped with video monitoring and security lights for peace of mind This space is perfect for entrepreneurs and businesses looking for a professional environment to thrive in. Ideal for warehousing, manufacturing, plumbing, HVAC, electricians, carpentry, welding, CNC, and more! Don't miss out on this opportunity! Contact us for more details and to schedule a viewing: 316.312.5350 mmgmt@gmail.com

1

1st Floor Ste 1223 N Moseley

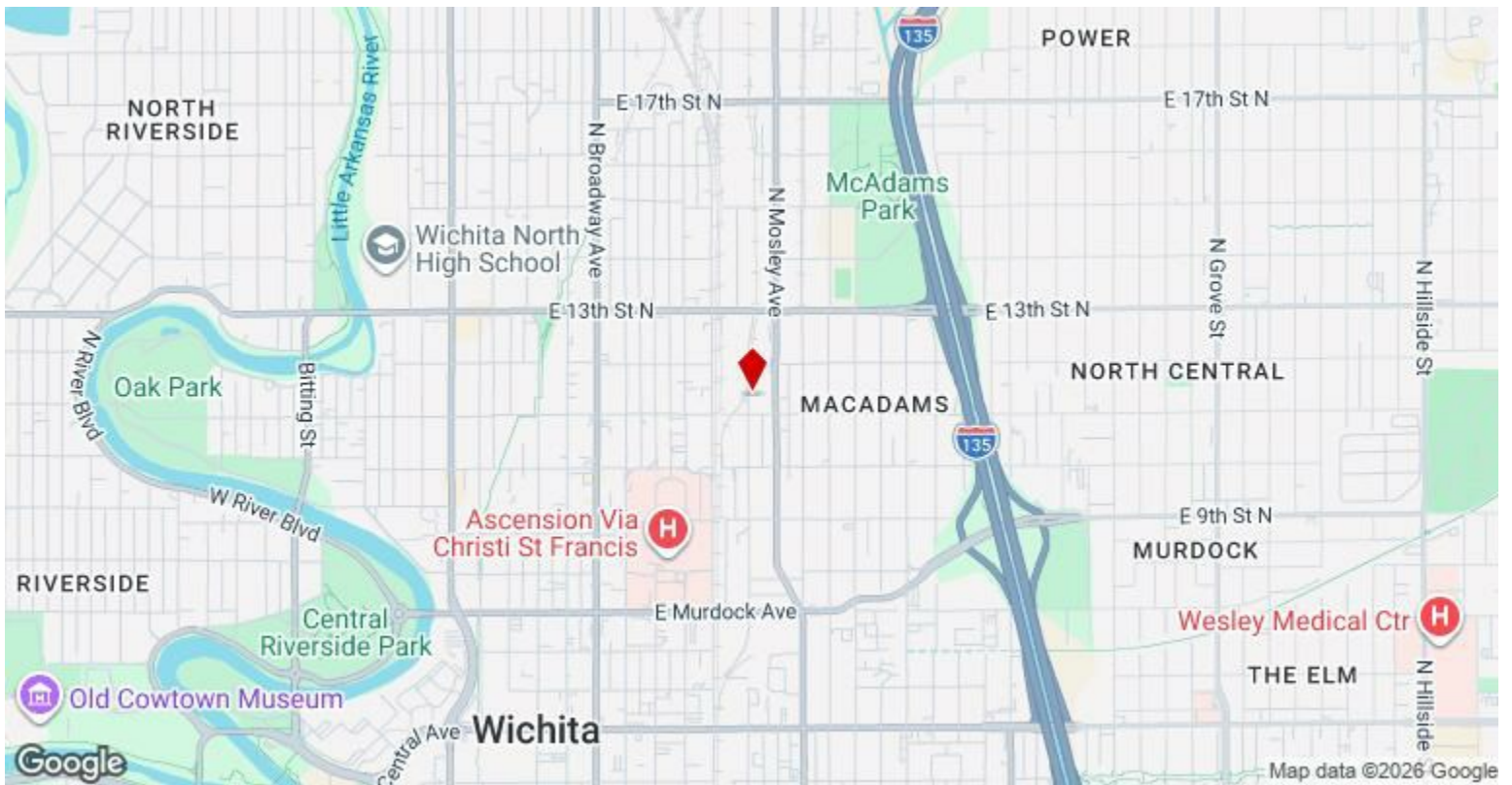
Space Available	2,900 SF
Rental Rate	\$18.60 /SF/YR
Date Available	Now
Service Type	Full Service
Space Type	Relet
Space Use	Industrial
Lease Term	1 Years

2

1st Floor Ste F

Space Available	900 SF
Rental Rate	\$12.12 /SF/YR
Date Available	Now
Service Type	Modified Gross
Space Type	Relet
Space Use	Industrial
Lease Term	1 - 3 Years

3



1214 N Mead, Wichita, KS 67214

1214 N Mead is a centrally located flex industrial property offering a combination of warehouse/shop space with an on-site office build-out. The property features secure access, convenient on-site parking, and a flexible layout ideal for small businesses, trades, or light industrial users seeking functional, affordable workspace in Wichita.

Property Photos



1214 Shop Area



1214 Garage Door

Property Photos

