

950 RESERVE DRIVE, SUITE 160
ROSEVILLE, CALIFORNIA
FOR LEASE & SALE



NEWMARK

JACK BLACKMON

t 916-569-2372

jack.blackmon@nmrk.com

CA RE License #01999561

JODIE ROBINSON

t 916-569-2318

jodie.robinson@nmrk.com

CA RE License #02214357

950

RESERVE DRIVE SUITE 160

ROSEVILLE, CALIFORNIA

HIGHLIGHTS

- Sale price: \$2,235,759 (\$406/SF) **REDUCED PRICE: \$1,955,800 (\$350/SF)**
- Lease price: \$1.95/SF modified gross with option to purchase
- APN# 015-490-054
- ±0.06 Acres
- Suite 160 - ±5,588 RSF
- HOA fees TBD
- Monument Signage Available
- Class A Improvements
- Fiber in-place
- Close proximity to retail and entertainment such as Mikuni, Dave & Busters, DSW, Roseville Galleria and more
- Easy access to Highway 65 and Interstate 80
- Office park recently refreshed with LED exterior lighting, fresh slurry seal and exterior paint



950

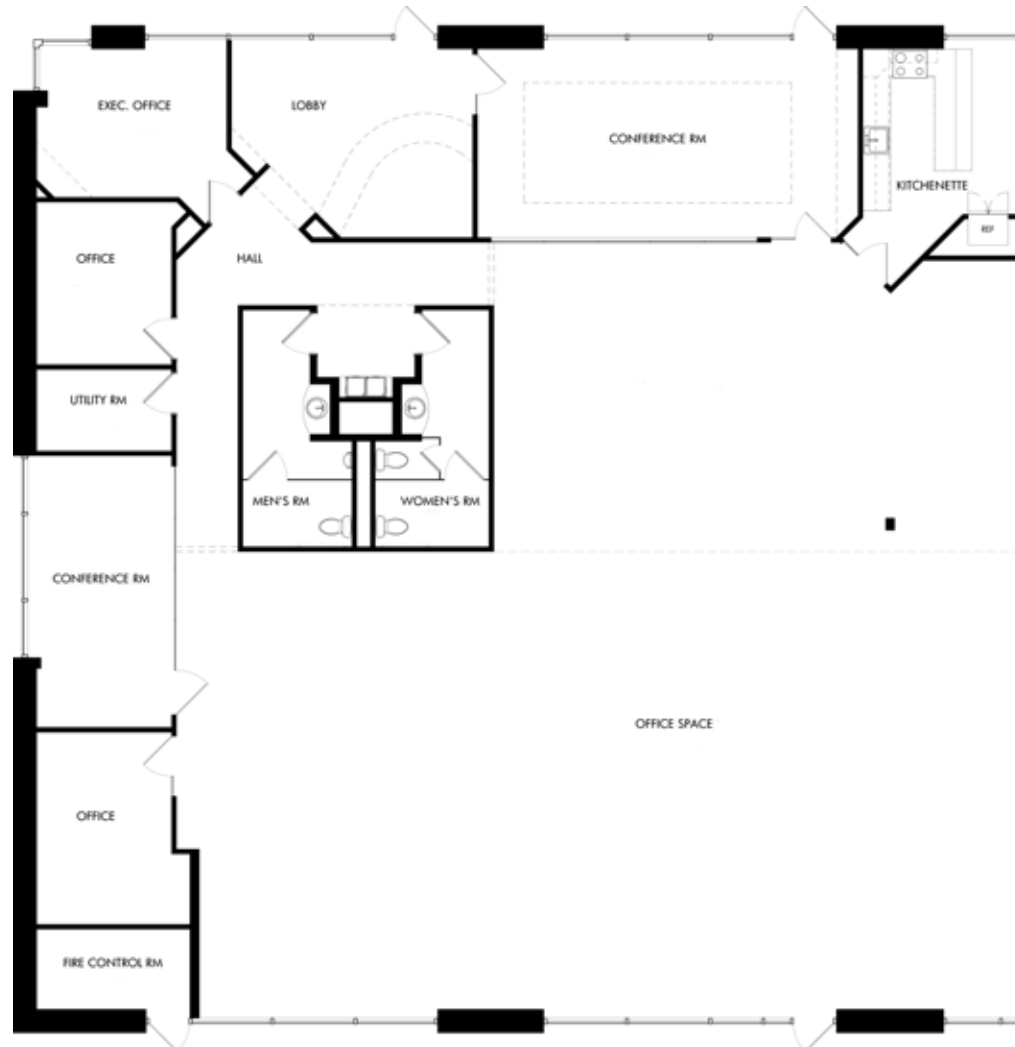
RESERVE DRIVE SUITE 160

ROSEVILLE, CALIFORNIA

FLOOR PLAN

Suite 160: $\pm 5,588$ RSF

PARCEL AERIAL



NEARBY AMENITIES



PHOTO GALLERY



950 RESERVE DRIVE, SUITE 160

ROSEVILLE, CALIFORNIA

FOR LEASE & SALE



The distributor of this communication is performing acts for which a real estate license is required. The information contained herein has been obtained from sources deemed reliable but has not been verified and no guarantee, warranty or representation, either express or implied, is made with respect to such information. Terms of sale or lease and availability are subject to change or withdrawal without notice. NMRK-NWMKTG OFFICES MP-1549..10/2025

NEWMARK

JACK BLACKMON

t 916-569-2372

jack.blackmon@nmrk.com

CA RE License #01999561

JODIE ROBINSON

t 916-569-2318

jodie.robinson@nmrk.com

CA RE License #02214357