

275 US 30, SCHERERVILLE, IN 46375



For more information, please contact:

BRETT MCDERMOTT

Co-Founder/Senior Vice President

219.864.0200

bmcdermott@latitudeco.com

MYLES RAPCHAK

Principal/Vice President

219.864.0200

mrapchak@latitudeco.com

JOHN O'MALLEY

Associate Broker

219.864.0200

jomalley@latitudeco.com



LATITUDE
COMMERCIAL
REAL ESTATE SERVICES

LATITUDECO.COM

SCHERERVILLE COMMONS

275 US 30, Schererville, IN 46375



EXECUTIVE SUMMARY



OFFERING SUMMARY

Available SF: 1,979 - 4,451 SF

Lease Rate: Negotiable

Lot Size: 1.51 Acres

Year Built: 2024

Building Size: 8776 SF

PROPERTY HIGHLIGHTS

- New retail center located in Schererville, IN
- Join Dunkin in their newest location
- Recently signed lease with Jersey Mike's and The Joint Chiropractic
- Construction now complete
- Space ranges from 1,979 SF and up
- Endcap space available



BRETT MCDERMOTT

Co-Founder/Senior Vice President
219.864.0200
bmcdermott@latitudeco.com

MYLES RAPCHAK

Principal/Vice President
219.864.0200
mrapchak@latitudeco.com

JOHN O'MALLEY

Associate Broker
219.864.0200
jomalley@latitudeco.com

SCHERERVILLE COMMONS

275 US 30, Schererville, IN 46375



PROPERTY DESCRIPTION



PROPERTY DESCRIPTION

Now leasing Schererville Commons located on US 30 in Schererville, IN. Join Dunkin (now open) and Jersey Mikes (under construction) in their newest locations along with The Joint Chiropractic. The subject property is located on the south side of US 30 just east of Austin Avenue next to Dairy Queen. The property sits in front of a 130 unit Senior Living Community. Great opportunity to locate in one of the strongest retail trade areas in Northwest, IN. Spaces ranges from 1,500 SF and up with both inline and endcap space available.

LOCATION DESCRIPTION

The subject property is located on highly traveled US 30 in Schererville, IN

Schererville is a town in St. John Township, Lake County, Indiana. It is part of the Chicago MSA. Long before Indiana became a state, long before the founding of Schererville, people called this place the "Crossroads." Many residents of Schererville commute to work in downtown Chicago due to the city's proximity. Schererville is home to one of Northwest Indiana's premiere retail trade areas.

BRETT MCDERMOTT

Co-Founder/Senior Vice President
219.864.0200
bmcdermott@latitudeco.com

MYLES RAPCHAK

Principal/Vice President
219.864.0200
mrapchak@latitudeco.com

JOHN O'MALLEY

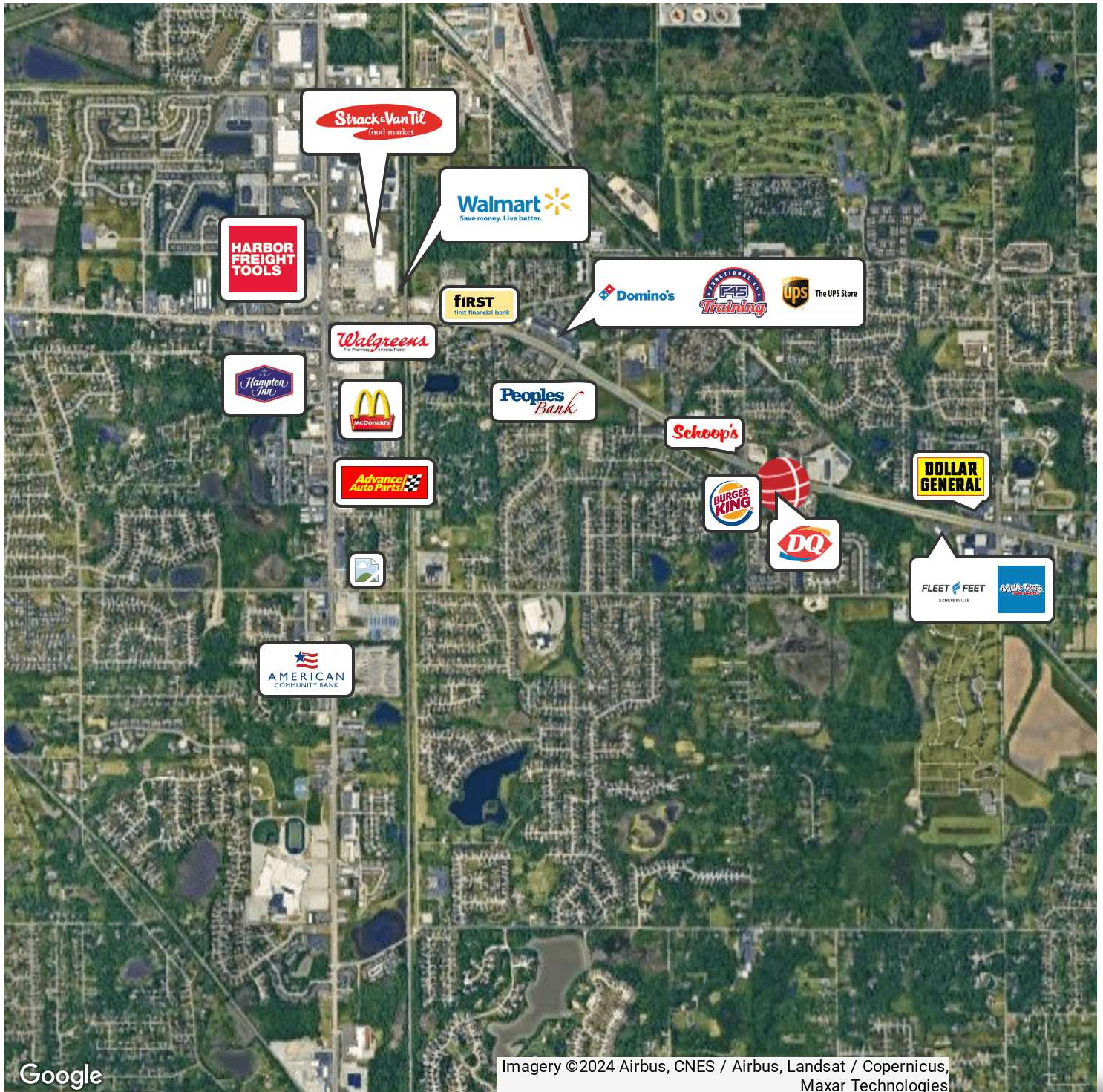
Associate Broker
219.864.0200
jomalley@latitudeco.com

SCHERERVILLE COMMONS

275 US 30, Schererville, IN 46375



RETAILER MAP



Google

Imagery ©2024 Airbus, CNES / Airbus, Landsat / Copernicus, Maxar Technologies

BRETT MCDERMOTT

Co-Founder/Senior Vice President
219.864.0200
bmcdermott@latitudeco.com

MYLES RAPCHAK

Principal/Vice President
219.864.0200
mrachak@latitudeco.com

JOHN O'MALLEY

Associate Broker
219.864.0200
jomalley@latitudeco.com

• 4 •

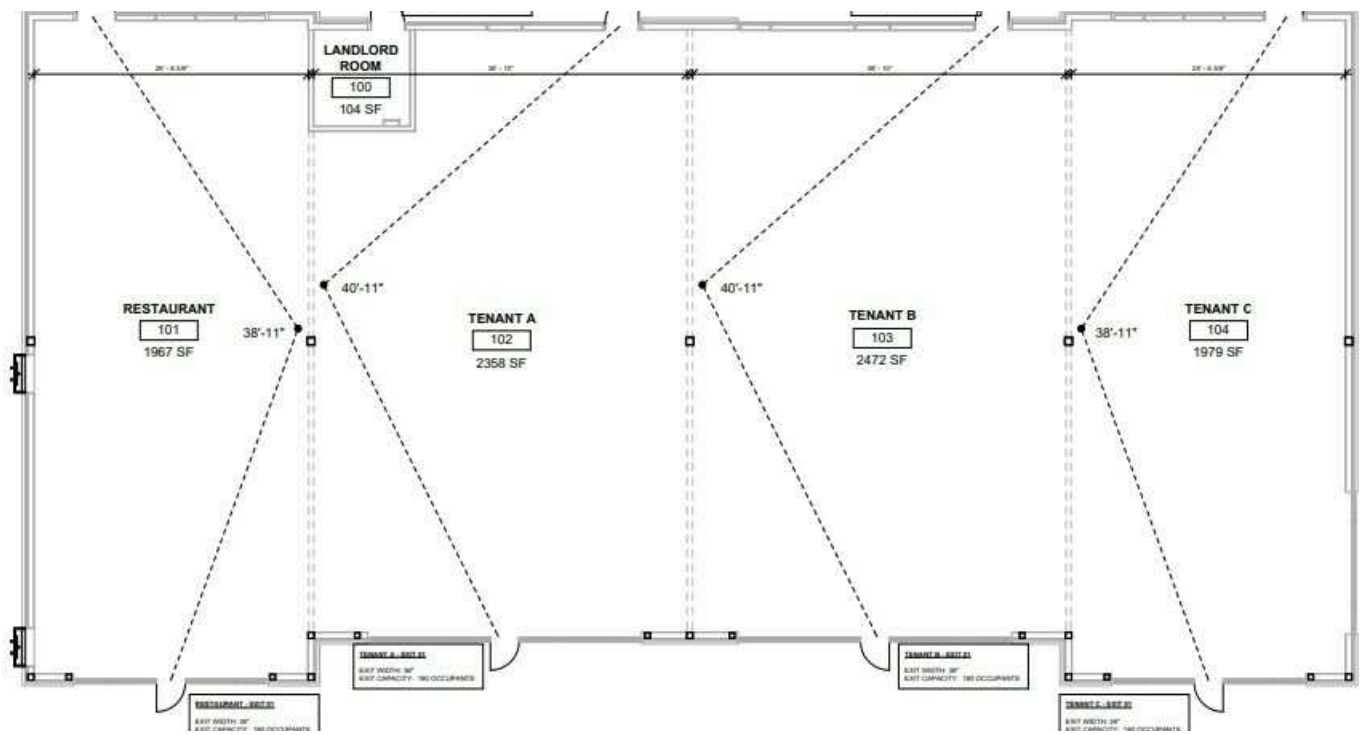
LATITUDECO.COM

SCHERERVILLE COMMONS

275 US 30, Schererville, IN 46375



LEASE SPACES



LEASE INFORMATION

Lease Type:	NNN	Lease Term:	Negotiable
Total Space:	1,979 - 4,451 SF	Lease Rate:	Negotiable

AVAILABLE SPACES

SUITE	TENANT	SIZE (SF)	LEASE TYPE	LEASE RATE	DESCRIPTION
275 US 30 Tenant C (Endcap)	Available	1,979 - 4,451 SF	NNN	Negotiable	-
275 US 30 Tenant B (Inline)	Available	2,472 - 4,451 SF	NNN	Negotiable	-

BRETT MCDERMOTT
Co-Founder/Senior Vice President
219.864.0200
bmcdermott@latitudeco.com

MYLES RAPCHAK
Principal/Vice President
219.864.0200
mrapchak@latitudeco.com

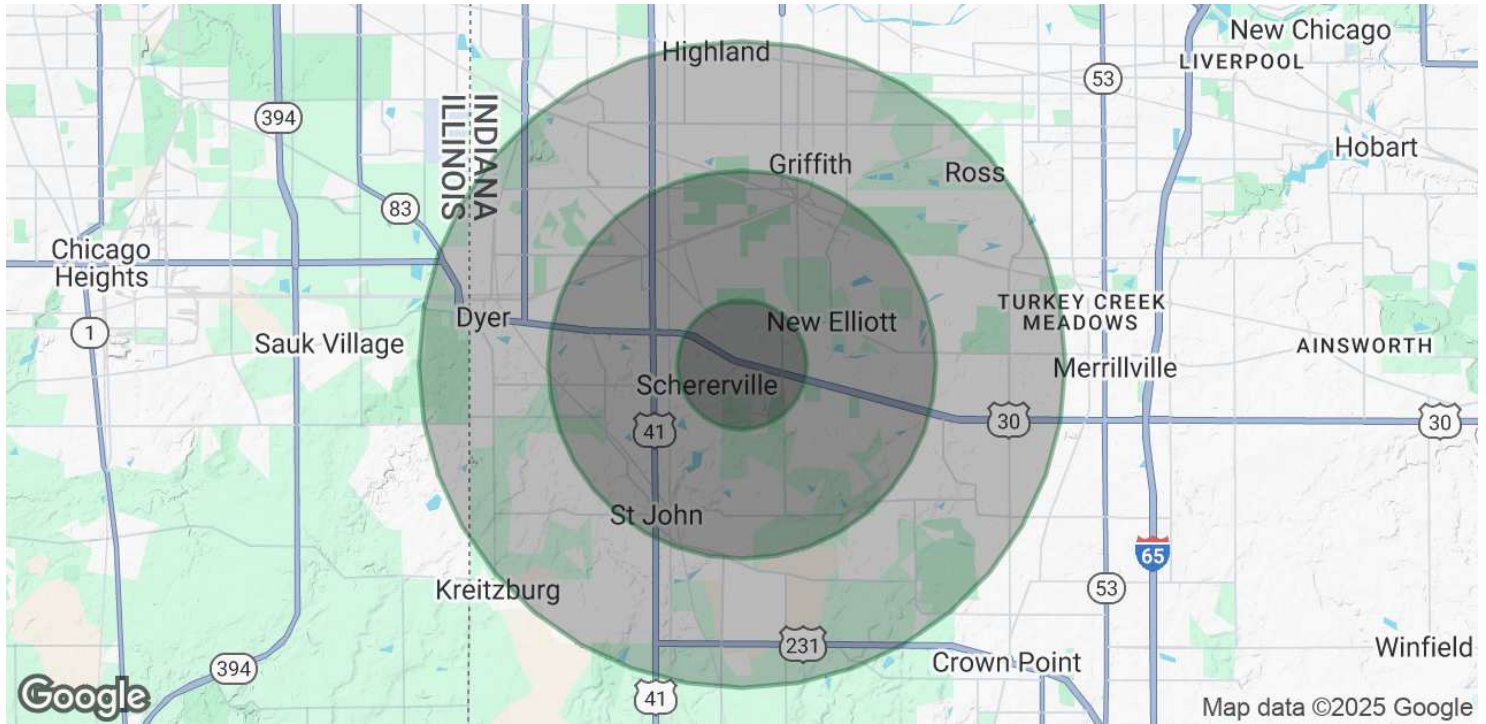
JOHN O'MALLEY
Associate Broker
219.864.0200
jomalley@latitudeco.com

SCHERERVILLE COMMONS

275 US 30, Schererville, IN 46375



DEMOGRAPHICS MAP & REPORT



POPULATION

	1 MILE	3 MILES	5 MILES
Total Population	6,832	47,929	134,637
Average Age	45	43	43
Average Age (Male)	44	42	41
Average Age (Female)	47	44	44

HOUSEHOLDS & INCOME

	1 MILE	3 MILES	5 MILES
Total Households	2,862	19,046	53,880
# of Persons per HH	2.4	2.5	2.5
Average HH Income	\$115,020	\$120,961	\$112,182
Average House Value	\$312,171	\$353,554	\$320,013

* Demographic data derived from 2020 ACS - US Census

BRETT MCDERMOTT

Co-Founder/Senior Vice President
219.864.0200
bmcdermott@latitudeco.com

MYLES RAPCHAK

Principal/Vice President
219.864.0200
mrapchak@latitudeco.com

JOHN O'MALLEY

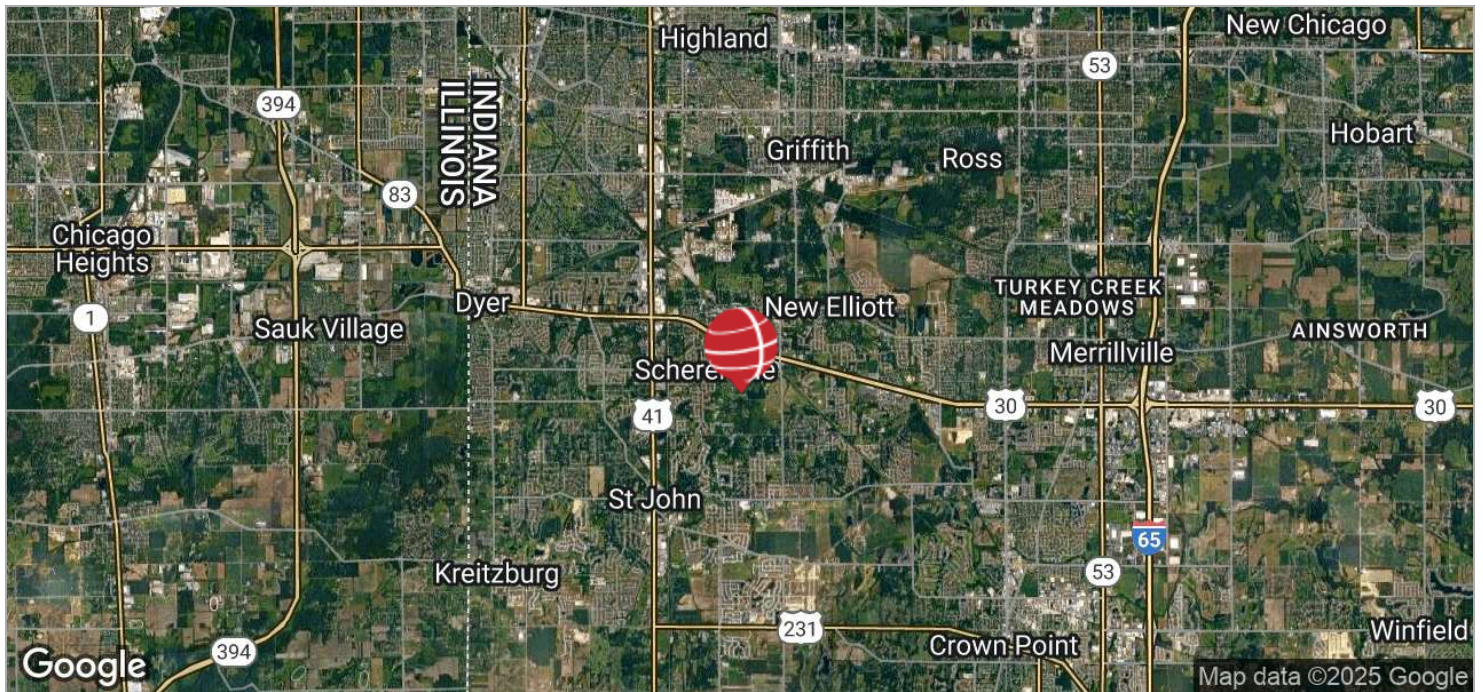
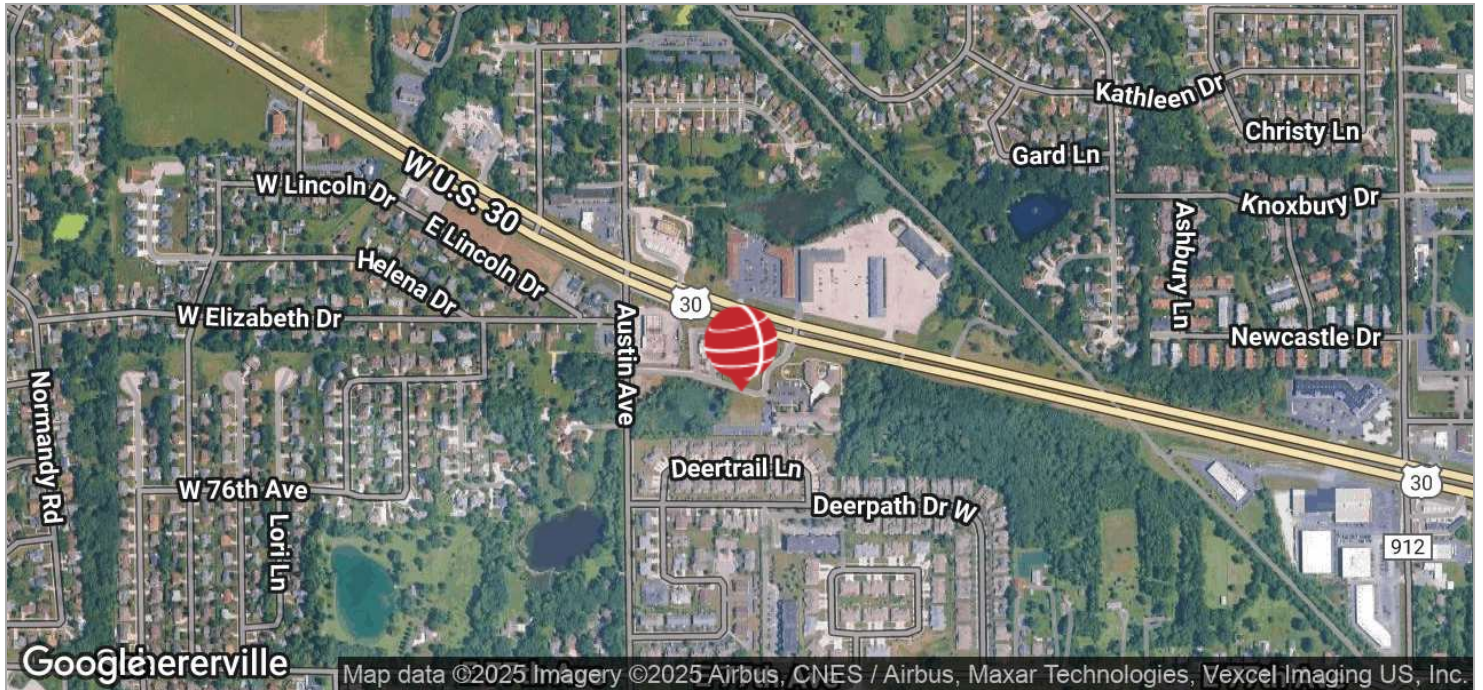
Associate Broker
219.864.0200
jomalley@latitudeco.com

SCHERERVILLE COMMONS

275 US 30, Schererville, IN 46375



LOCATION MAPS



BRETT MCDERMOTT

Co-Founder/Senior Vice President
219.864.0200
bmcdermott@latitudeco.com

MYLES RAPCHAK

Principal/Vice President
219.864.0200
mrachak@latitudeco.com

JOHN O'MALLEY

Associate Broker
219.864.0200
jomalley@latitudeco.com