

# 176 Broadway

FINANCIAL DISTRICT  
NEW YORK, NY



# Space Details

## Location

### Space A\*

Ground Floor	3,128 SF
Lower Level	3,000 SF

### Space B\*

Ground Floor	500 SF
Basement	500 SF
Mezzanine	800 SF

### Space C

Ground Floor	3,651 SF
Lower Level	4,100 SF
Mezzanine	5,400 SF

*\*Spaces can be combined*

## Frontage

Space A	27 FT on Broadway
Space B	13 FT on Broadway
Space C	28 FT on Broadway

## Possession

Immediate

## Site Status

Space A	Formerly William Barthman Jewelers
Space B	Currently vacant
Space C	Formerly Capital One Bank

## Neighbors

Century 21, Urban Outfitters, Gap, Starbucks, Citibank and TD Bank

## Comments

One block to the Fulton Transit Center with an annual ridership of 27,719,115 with access to the

**2 3 4 5 A C J Z R W** PATH trains

Can be combined with the corner space at 174 Broadway

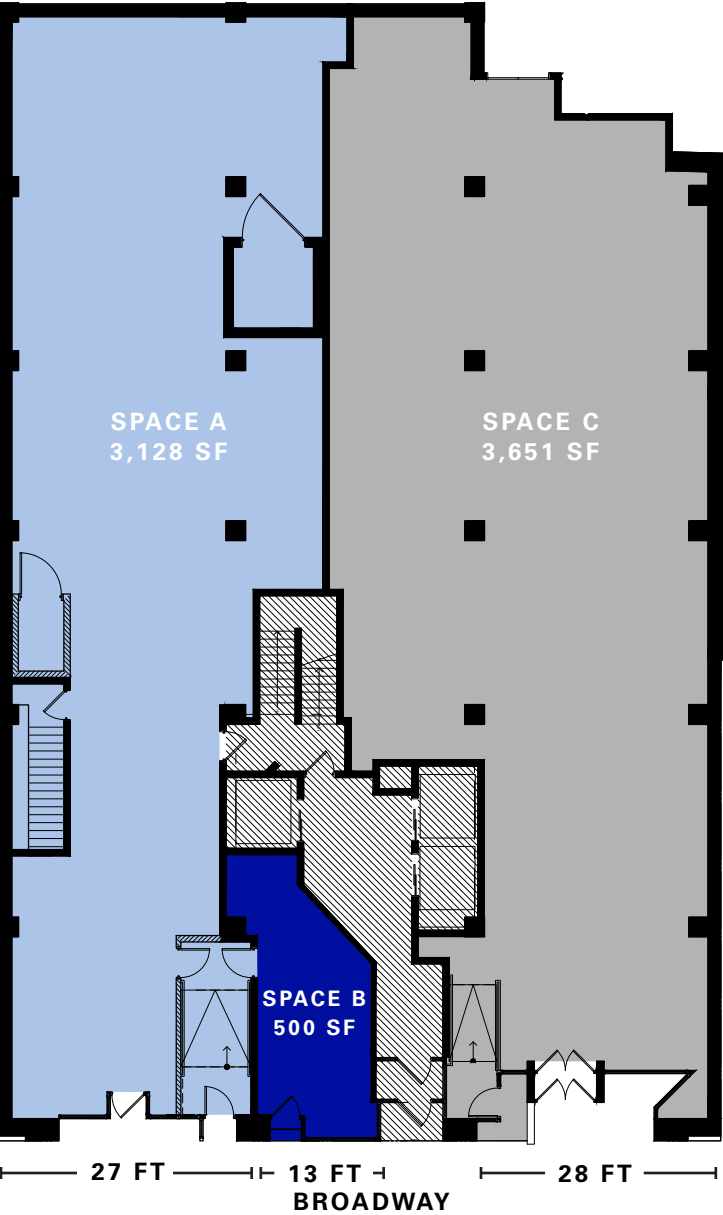
## Spaces A and B



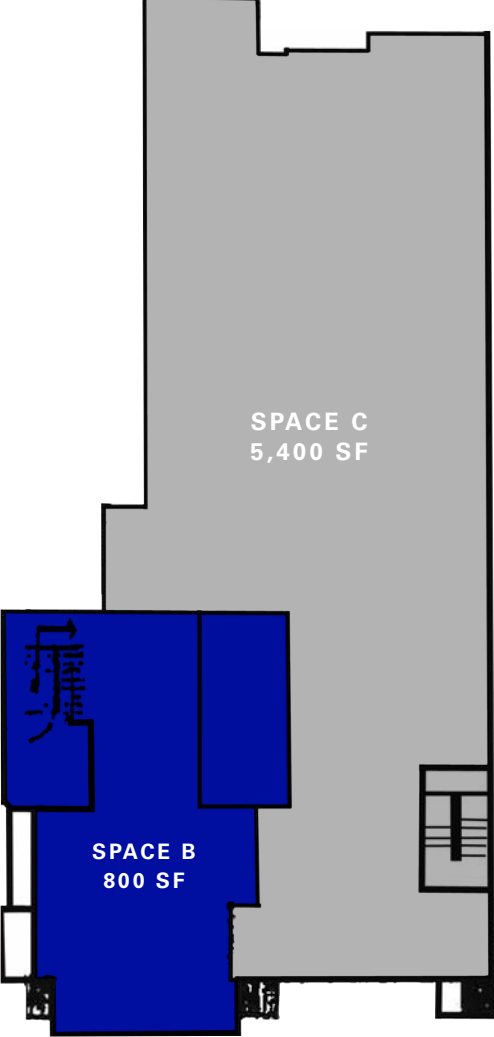
## Space C



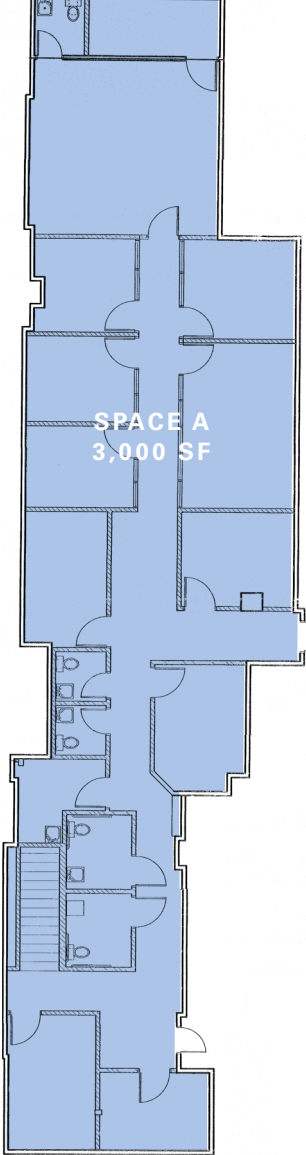
Ground Floor



Mezzanine



Lower Level



## 176 BROADWAY



### CONTACT

**Barry Fishbach**

t 212-331-0115

barry.fishbach@ngkf.com

**Lucas Kooyman**

t 212-372-2384

lkooyman@ngkf.com

**Jason Pruger**

t 212-372-2092

jpruger@ngkf.com

[nrmk.com](http://nrmk.com)