

PALISADES PARK

6801 Palisades Park Court, STE 1
Fort Myers, FL 33912

FOR LEASE



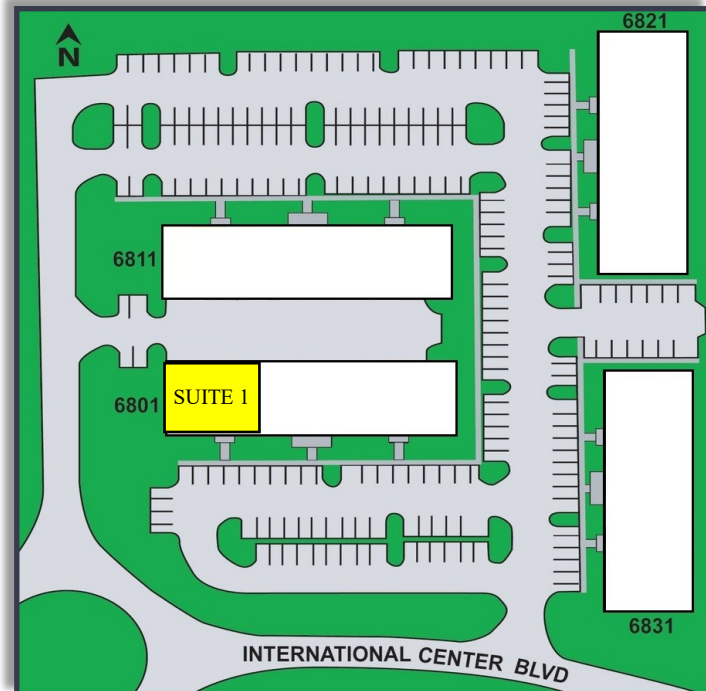
- PREMISES:**
- Centrally located office/medical office park
 - Built-out and ready for occupancy
 - Plenty of parking available
 - Building signage available

AVAILABLE: STE 1: 2,754± SF

LEASE RATE: \$17.00 PSF + NNN (est. \$8.50 PSF)

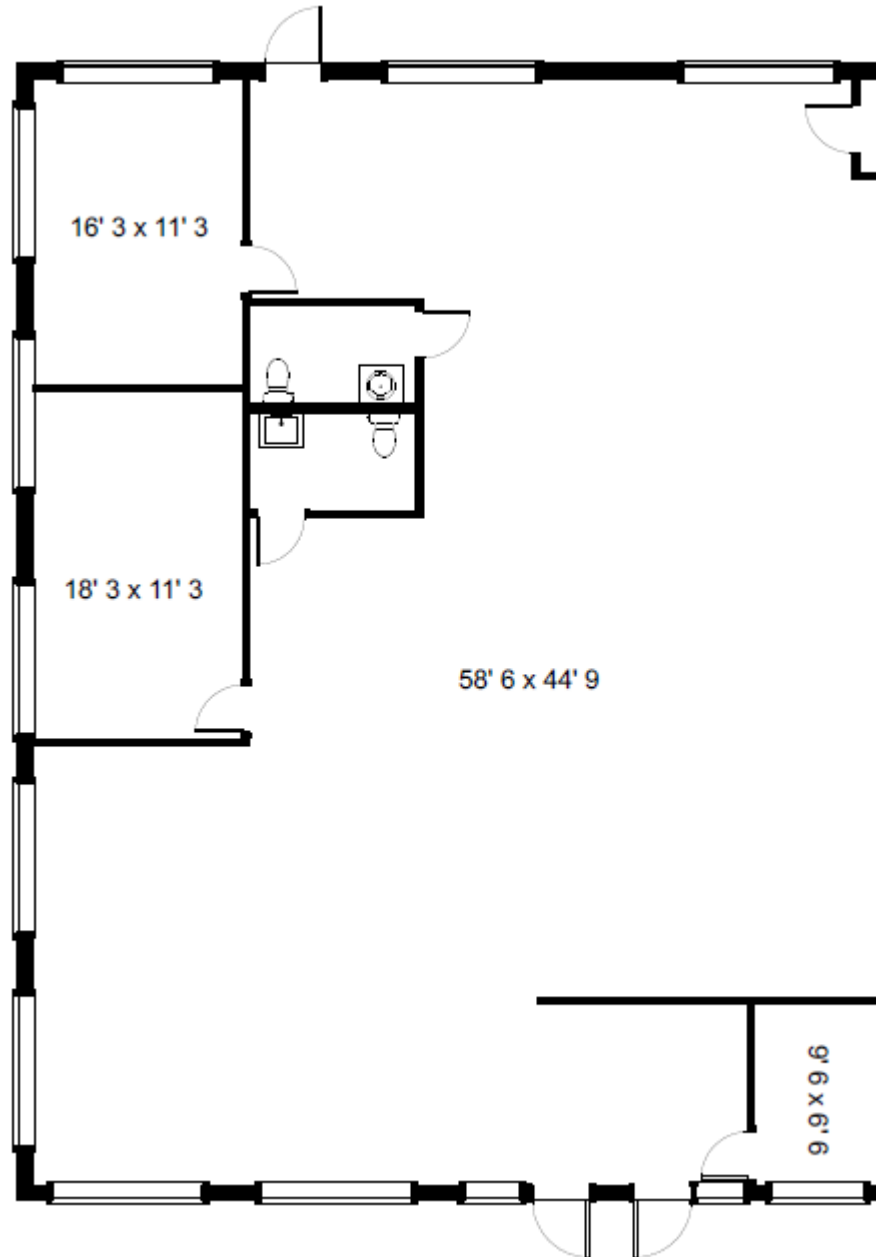
ZONING: Approved for office and medical office uses

LOCATION: Conveniently located 1/2 mile south of the Daniels Pkwy and Six Mile Cypress Pkwy intersection with entry off of Six Mile Cypress and Plantation Road.



PREMIER
COMMERCIAL

FLOOR PLAN



All information is deemed accurate but not guaranteed. Prices and availability subject to change without notice.

STE 1: 2,754± SF

LEASE RATE: \$17.00 PSF + NNN

CONTACT US:

Matthew Stepan, CCIM
Commercial Advisor
MattS@premiermail.net

WT Pearson
Broker Associate
WT@premiermail.net