

REQCE<sup>SM</sup>

# 251 E 13th St

Retail Space Available in New York

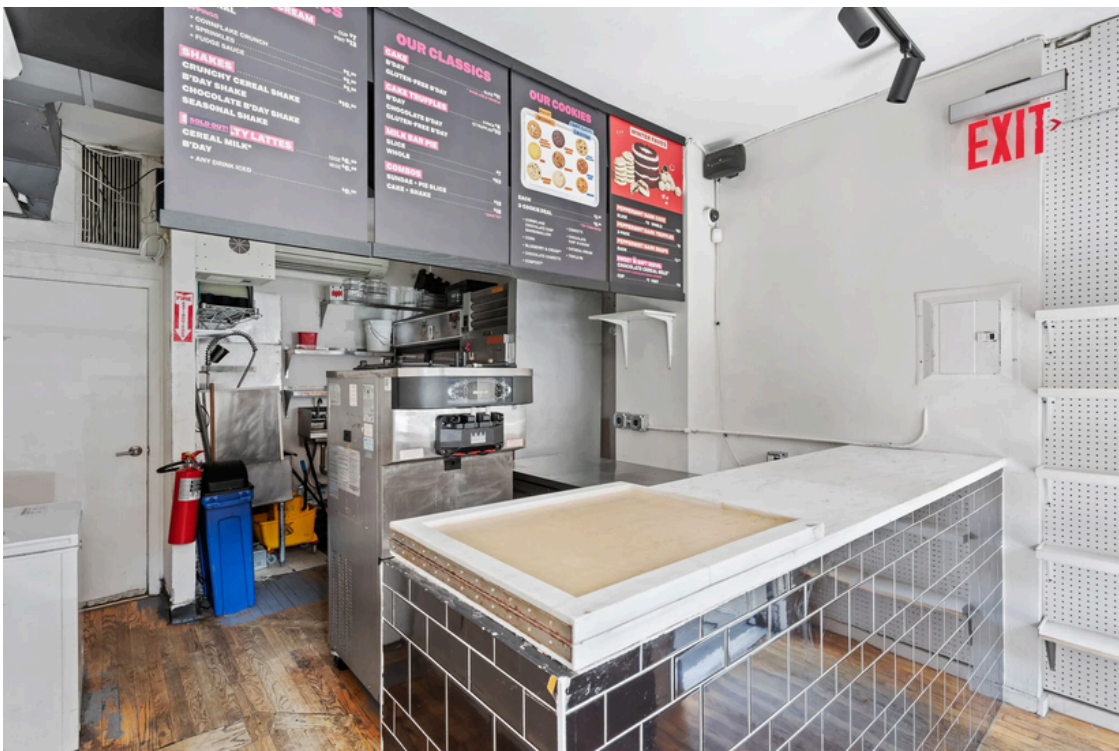
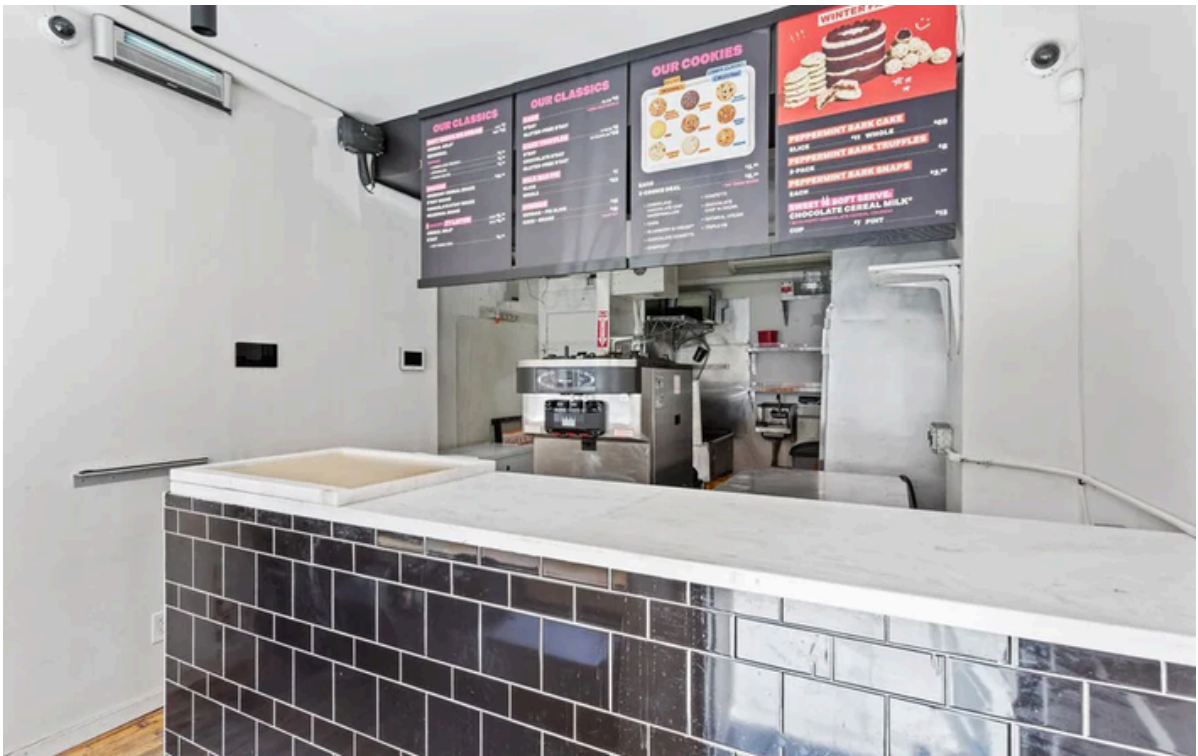
The former Milk Bar Bakery offers a prime location with great visibility and natural light. Key features include:

- Built-in shelving and service counter
- Existing equipment for a turnkey operation
- Clean white-box interior and private restroom
- All-electric setup with potential outdoor seating
- Versatile space suitable for various concepts like a bakery, café, or wine bar

Close to 2nd Avenue, Stuyvesant Square, and Union Square.



## Ground Floor | 350 SF



TERM	RENTAL RATE	SPACE USE	AVAILABILITY
Negotiable	Upon Request	Retail	Immediate