

FILLMORE DISTRICT'S PREMIER OFFICE SPACE



Space Highlights:

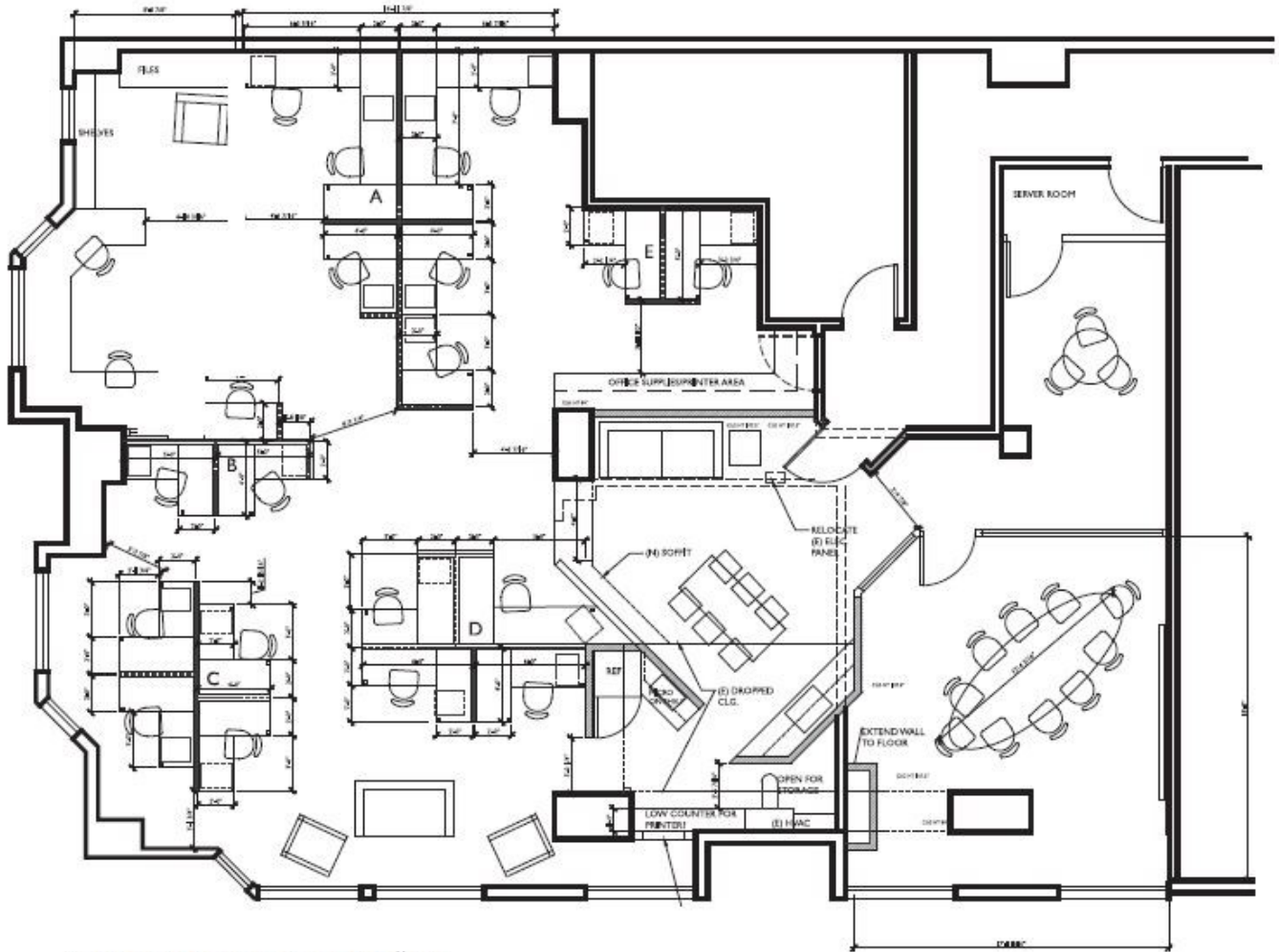
- Size: +/- 2,900 SF.
- Rent: \$8,800/ mo.
- Available: Immediately
- Remodeled Office space with 18 unit in workstations, conference room, private office, and kitchenette
- High Visibility location with excellent street presence
- Great restaurant corridor which include Statebird Provisions, Progress, Boba Guys, Wise Sons, Starbucks, and Popeyes
- Free 1.5 hour parking in the Safeway parking lot
- Conveniently located close to public transportation —38 Geary lines to Downtown/Richmond District

For additional information, Contact:
PATRICK SZETO
License # 01342118
415.928.6600 x390
patrick@amrci.com

AMERICAN REALTY & CONSTRUCTION INC.
1489 WEBSTER STREET #218
SAN FRANCISCO, CA 94115



1508 FILLMORE STREET, STE 303



1508 FILLMORE STREET #303

