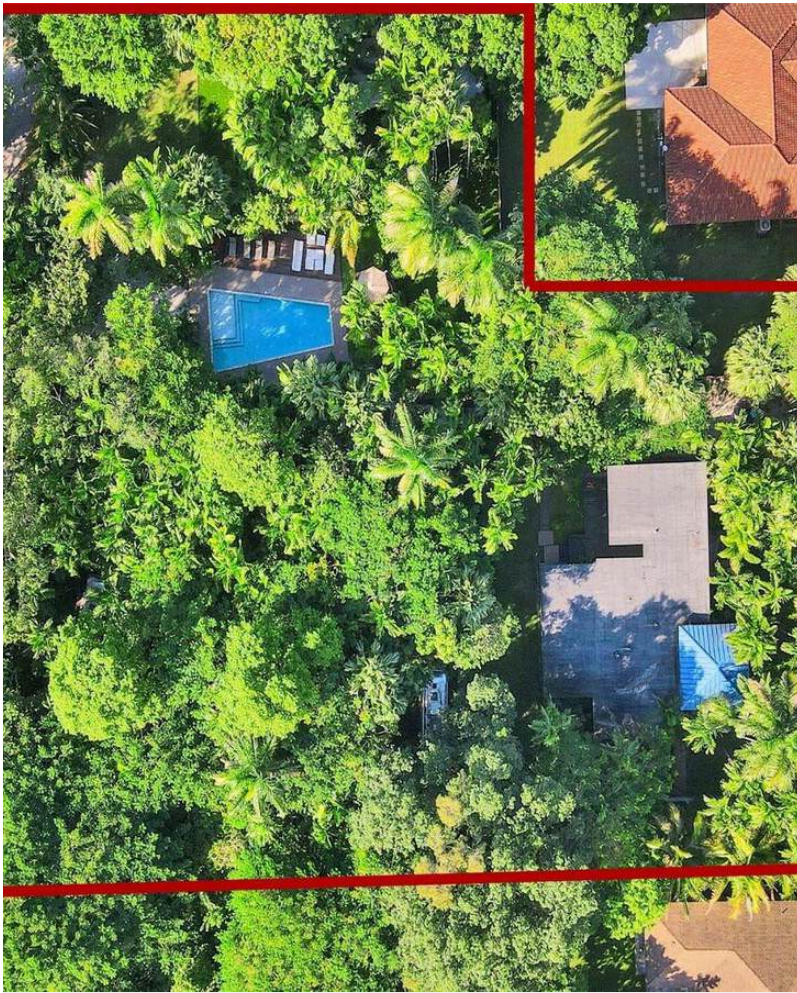


## 1.2 ACRE LUSCIOUS COMPOUND, MONEY MAKER!

14560 NE 3rd Ct, Miami, FL 33161



**Ricky Kallabat**  
KW Commercial  
700 NE 90th St, Miami, FL 33138  
[richardk@kw.com](mailto:richardk@kw.com)  
(305) 747-5117



# 1.2 ACRE LUSCIOUS COMPOUND, MONEY MAKER!

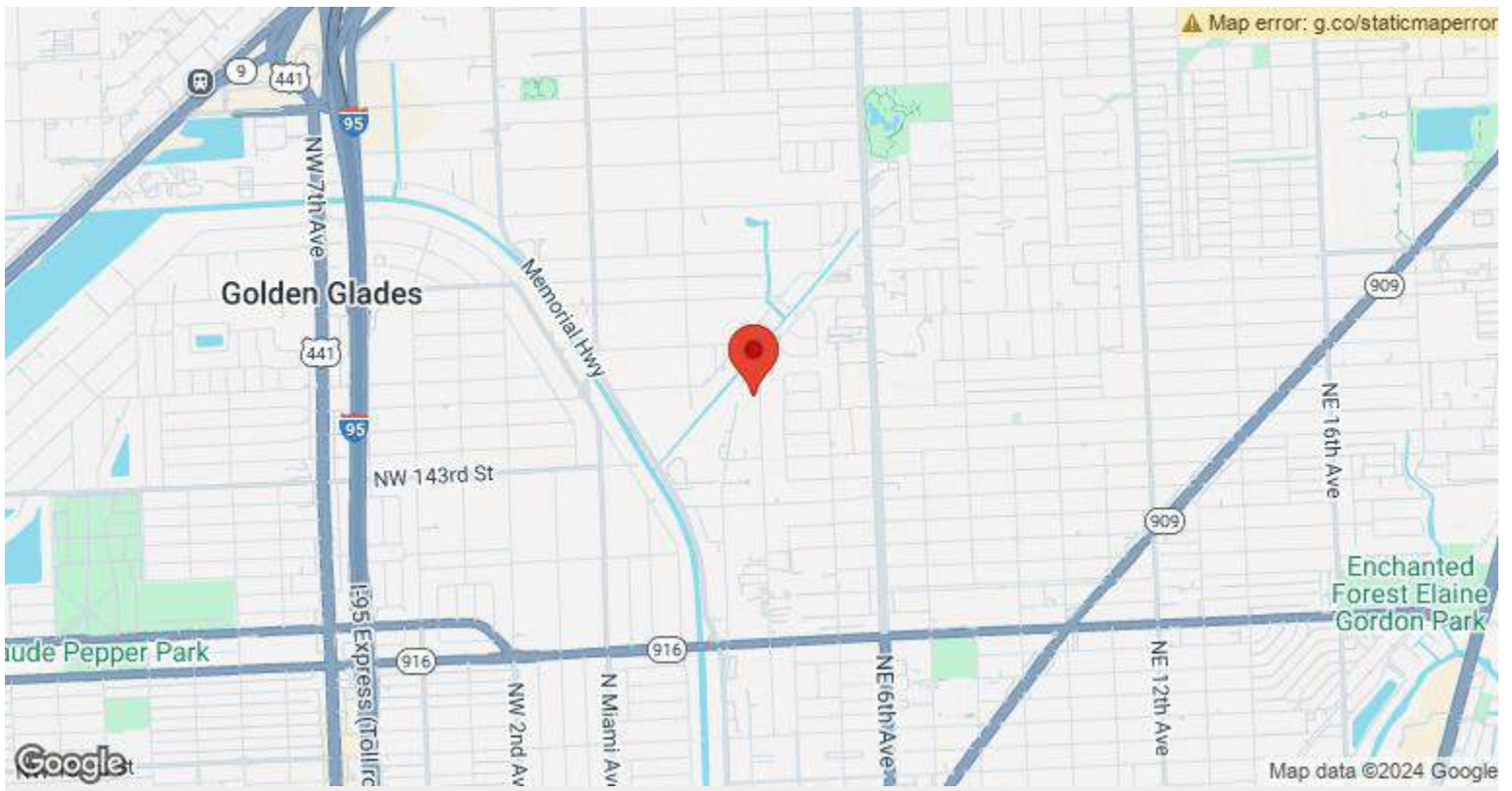
\$2,800,000

Escape to your Spiritual Retreat in the Balinese Jungle, on a dead-end street in the heart of Miami! Welcome home to 1000 Palms Hideout! Seriously, we promise you've NEVER seen anything like this. This unique main home offers 4 BR, 2 bath, over 2,000 total SFT on a massive 1.2-acre lot. This magnificent compound can provide multiple streams of income & a path to healing & wellness! Yes, the possibilities are ENDLESS!! Or just do AIRBNB and make a ton of money! You decide. With sleek black porcelain tile throughout, 10 ft ceilings (20 ft in the living area). Italian custom kitchen with floor-to-ceiling cabinets, quartz...

- 1.2 ACRES OF BUILDABLE, PRIVATE, FENCED LAND
- MULTIPLE STREAMS OF INCOME
- SELLER FINANCING AVAILABLE
- DEVELOPERS, BUILDERS & INVESTORS = GOLDMINE OPPORTUNITY

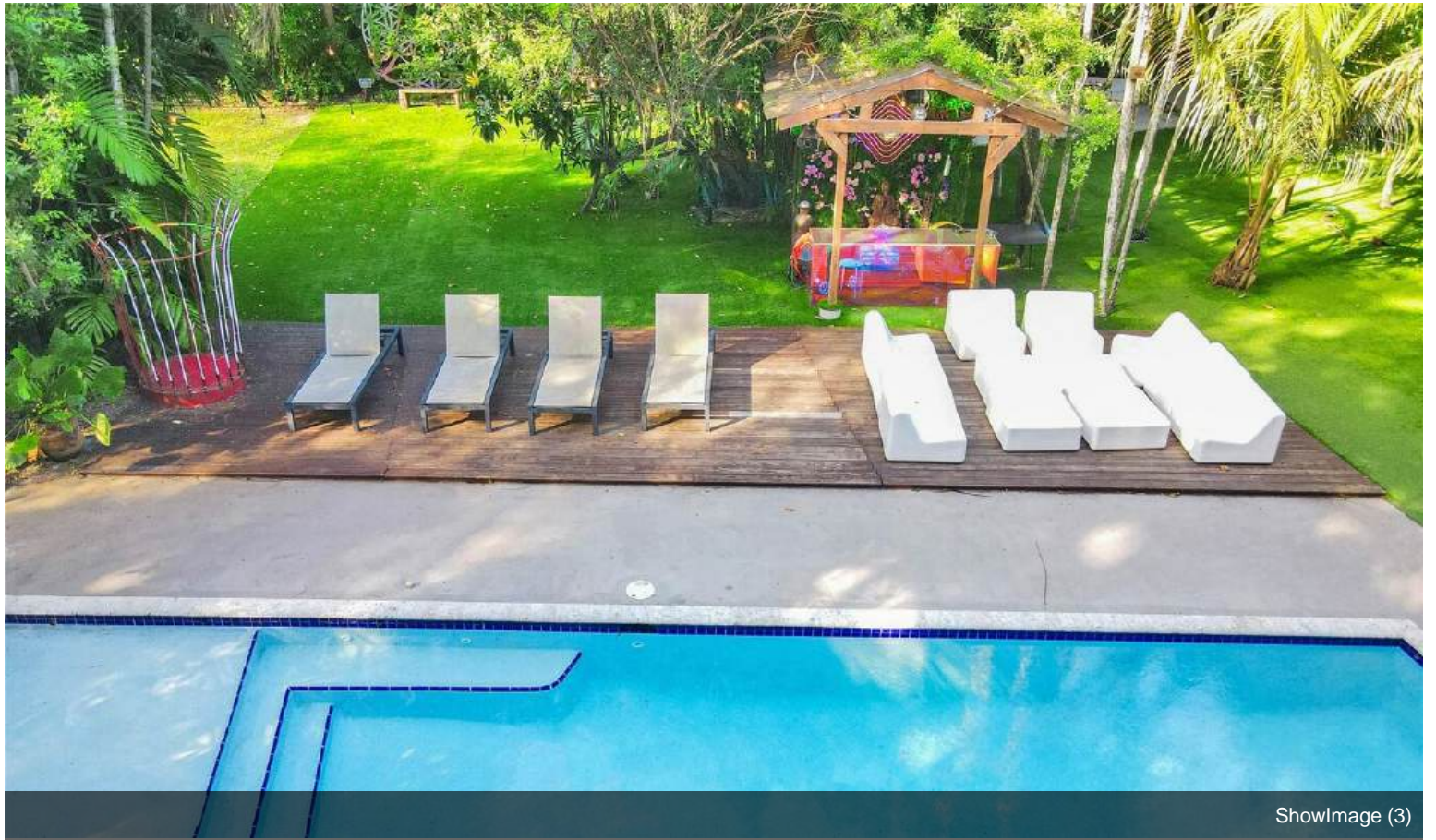


Price:	\$2,800,000
No. Units:	3
Property Type:	Multifamily
Sale Type:	Investment
Gross Building Area:	2,717 SF
Sale Conditions:	Build to Suit
No. Stories:	1
Year Built:	1968
APN / Parcel ID:	30-2219-000-0031
Walk Score ®:	41 (Car-Dependent)
Transit Score ®:	36 (Some Transit)



14560 NE 3rd Ct, Miami, FL 33161

## Property Photos



ShowImage (3)

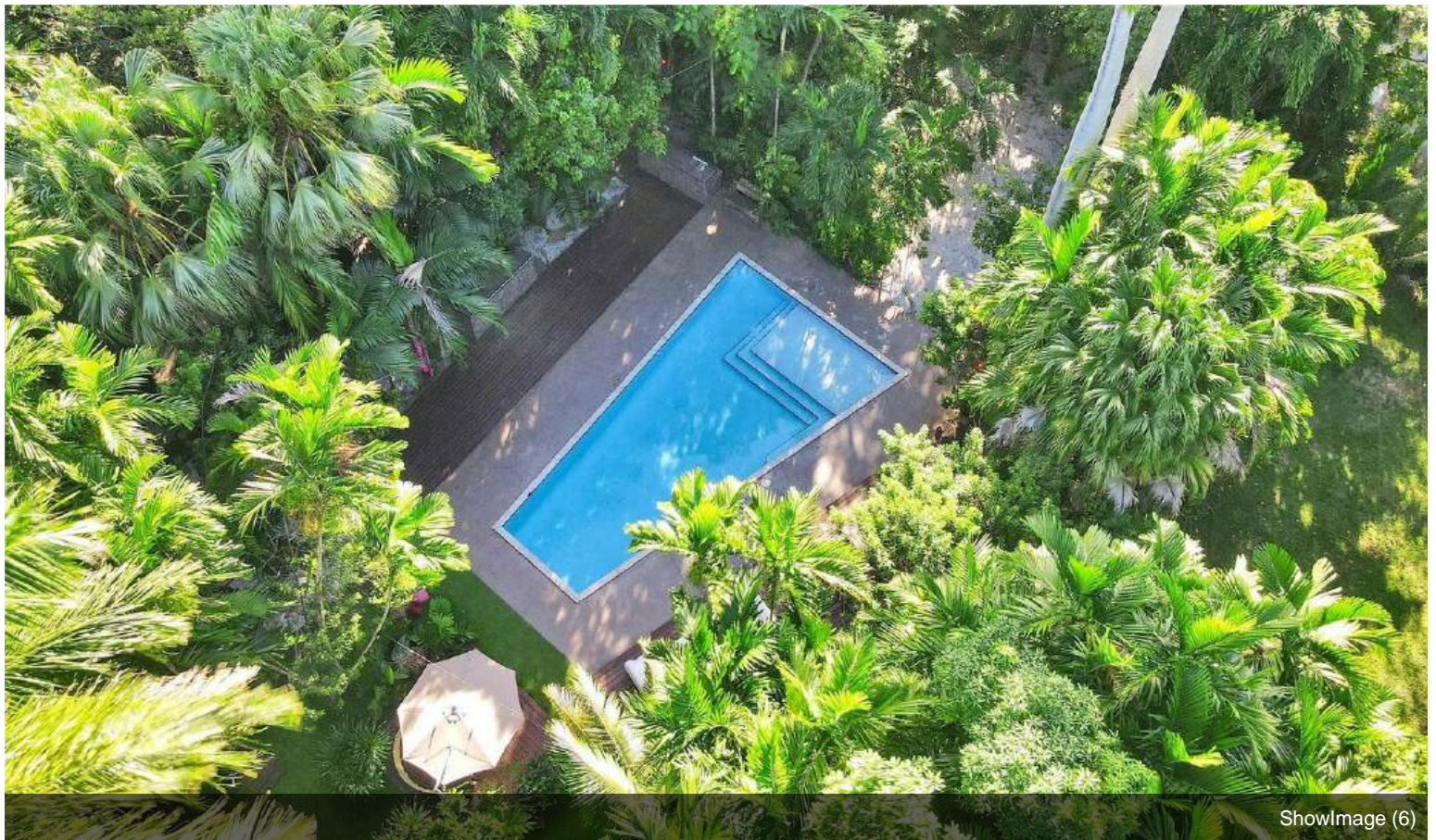


ShowImage (4)

## Property Photos

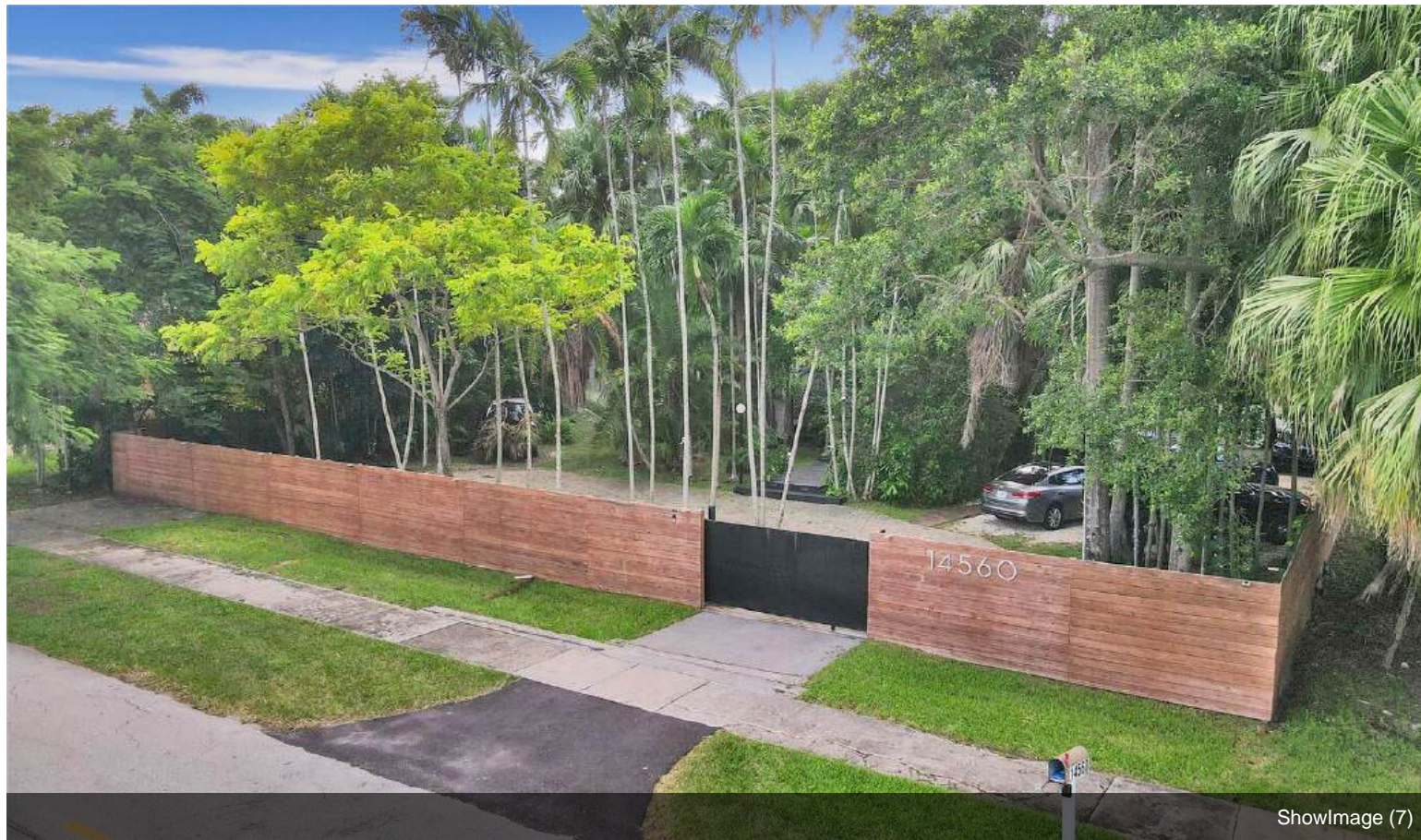


ShowImage (5)

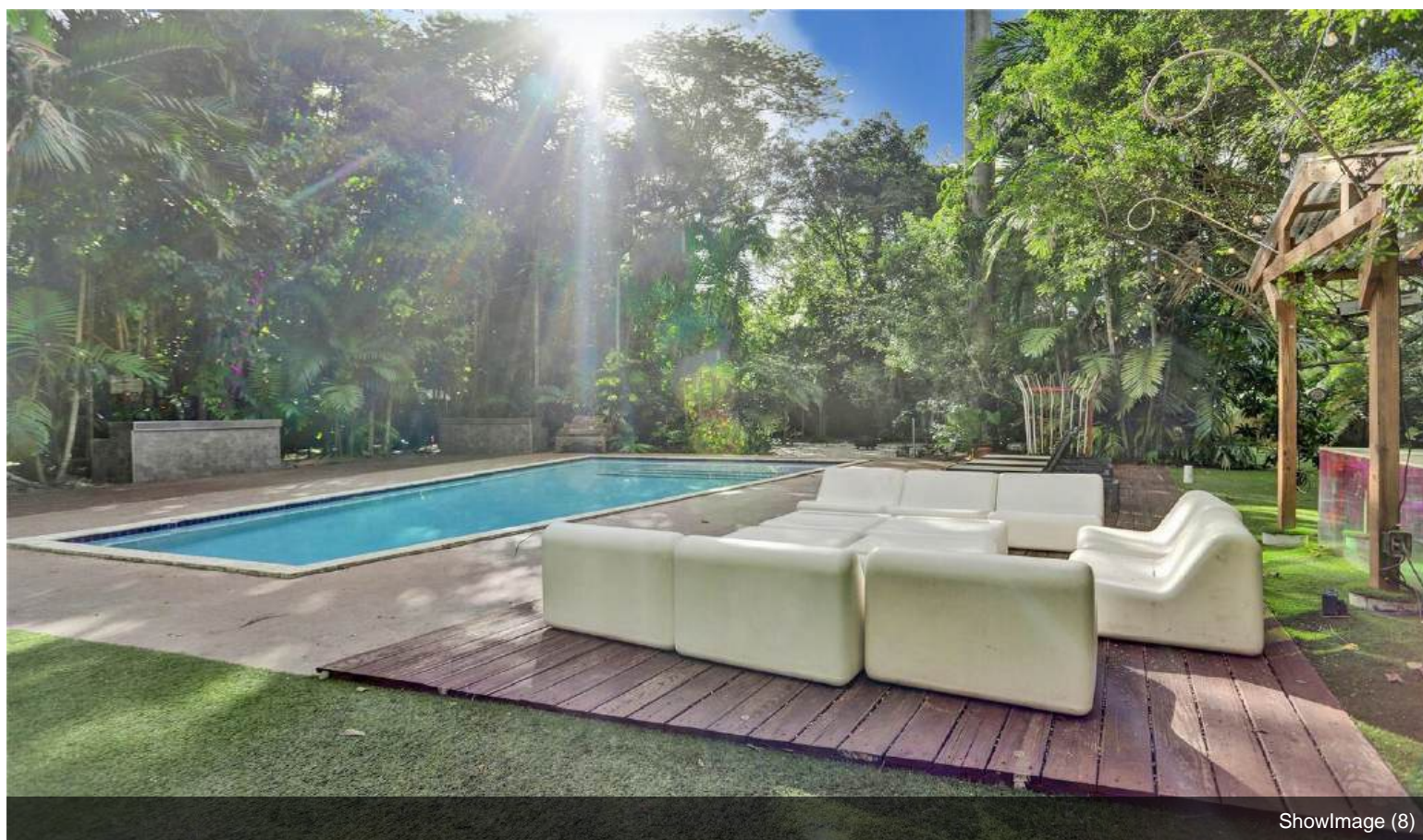


ShowImage (6)

# Property Photos

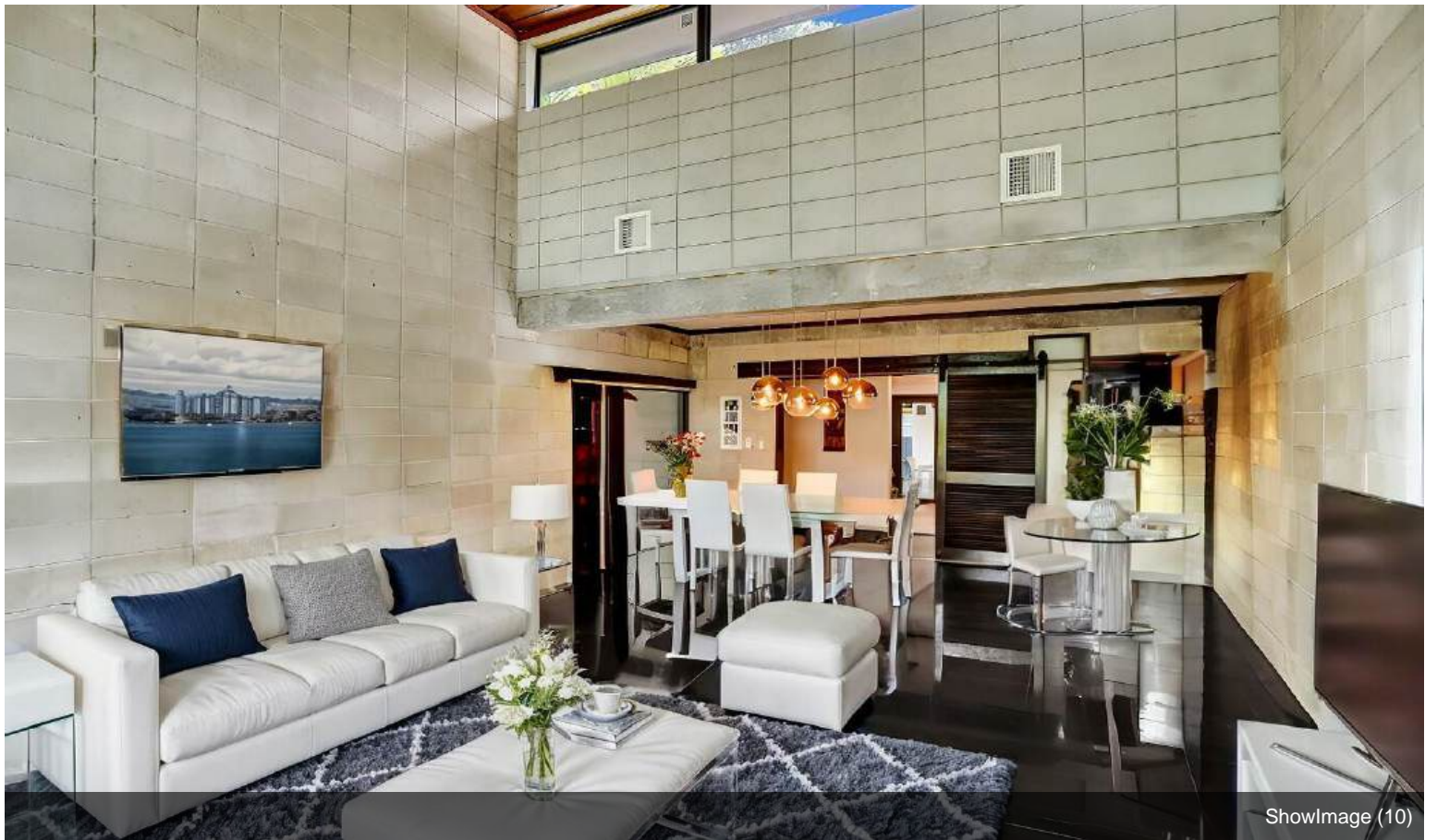


ShowImage (7)



ShowImage (8)

## Property Photos



## Property Photos



ShowImage (11)



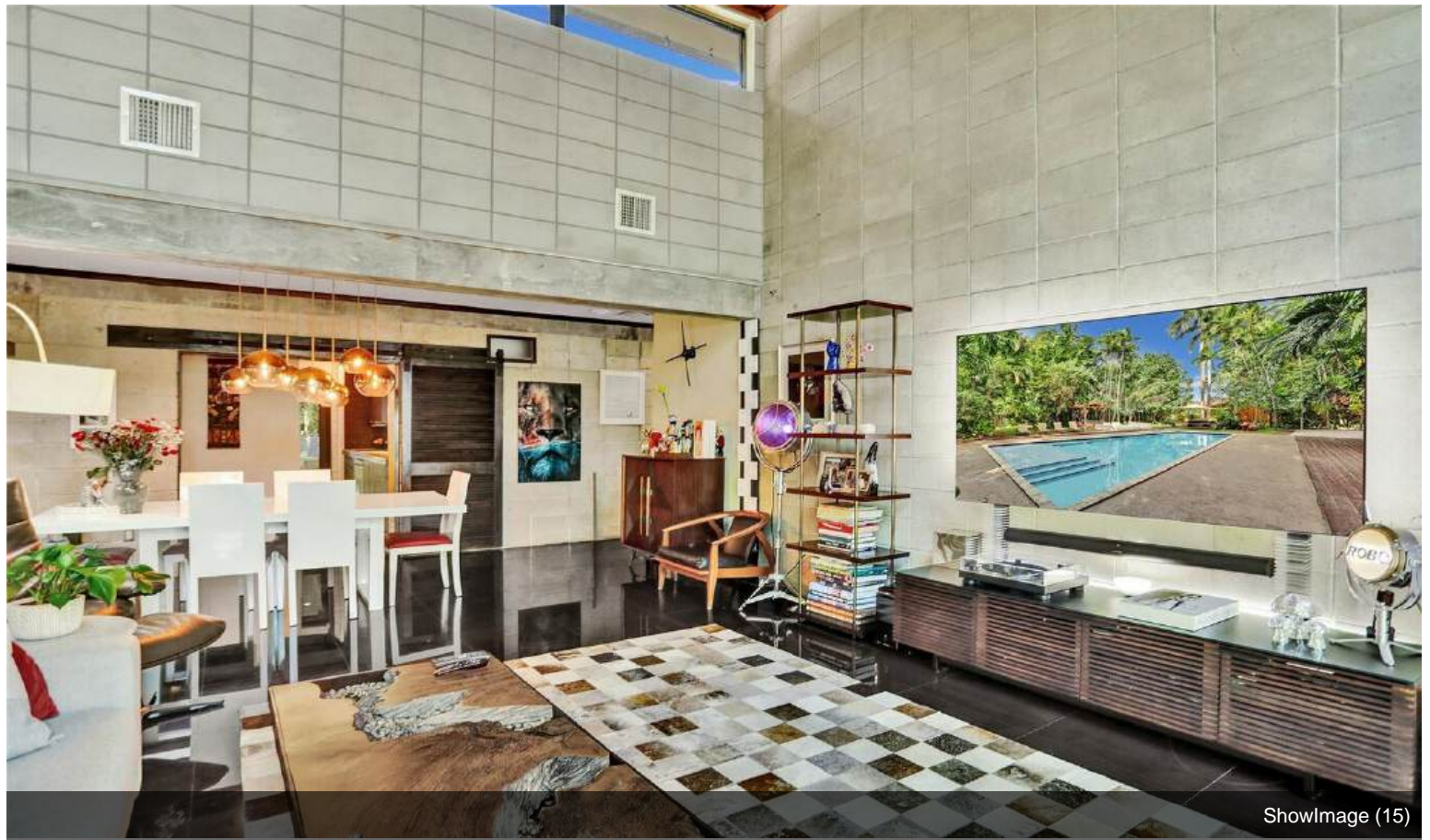
ShowImage (12)



## Property Photos



# Property Photos



ShowImage (15)



ShowImage (16)

## Property Photos



## Property Photos

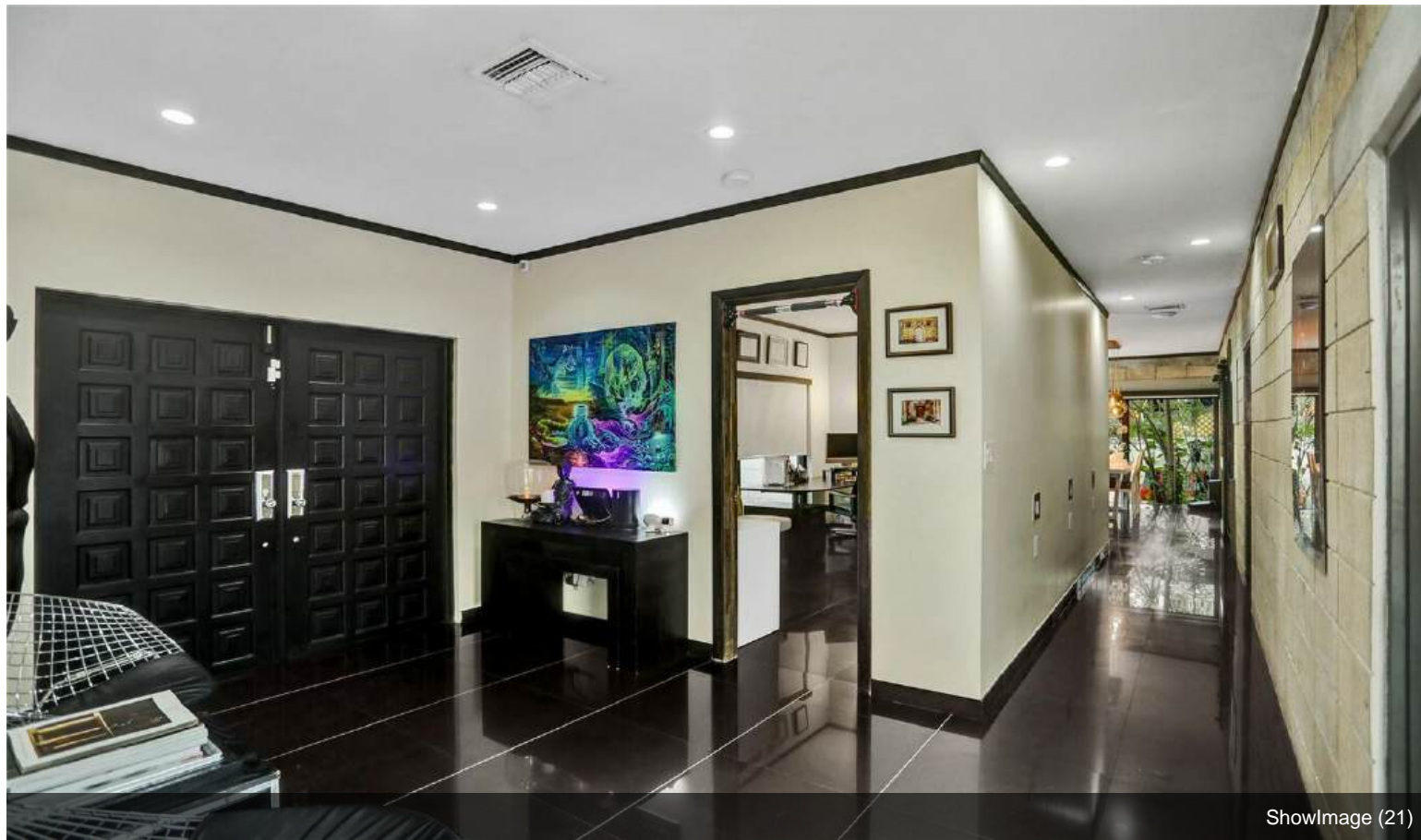


ShowImage (19)

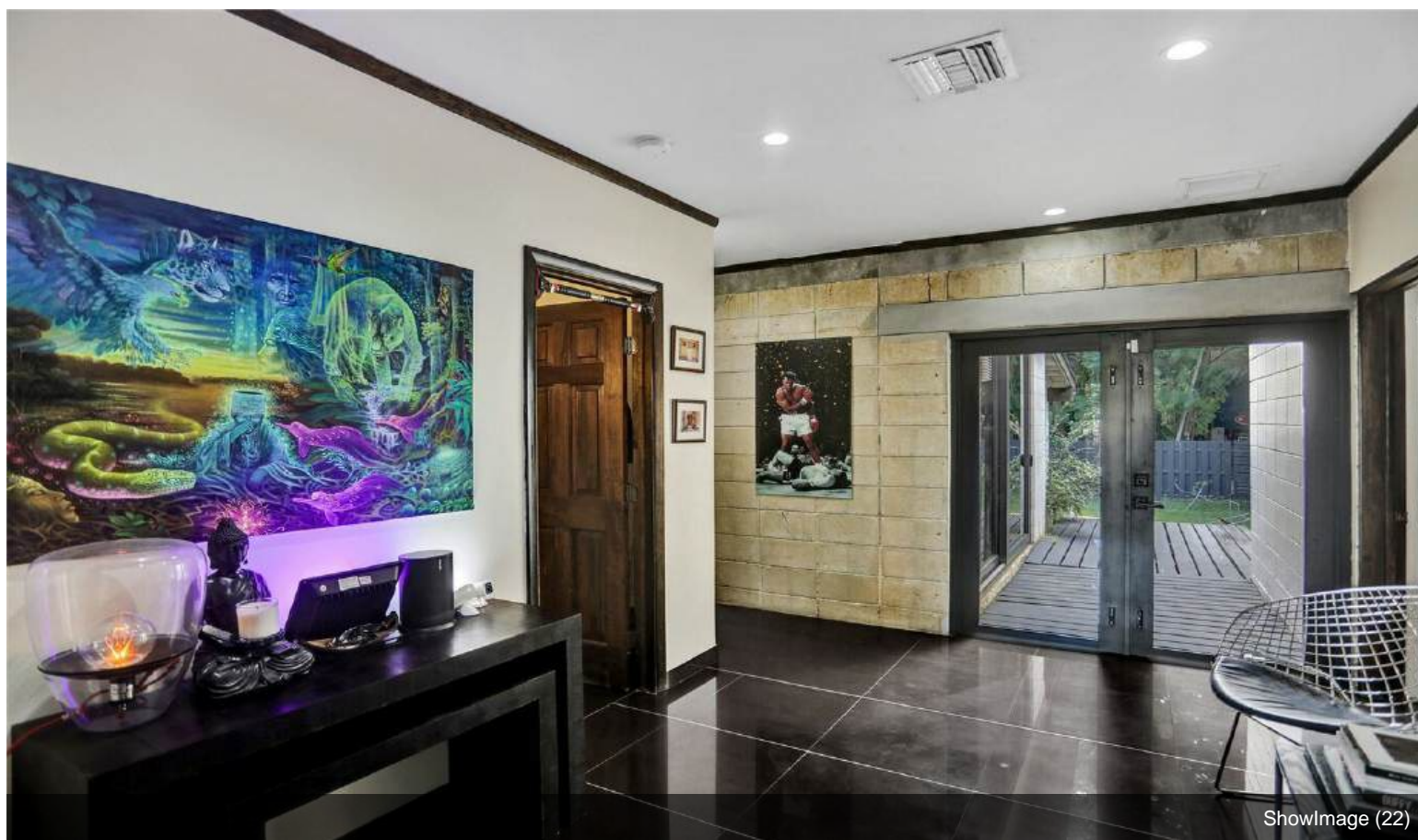


ShowImage (20)

# Property Photos



ShowImage (21)



ShowImage (22)

## Property Photos



ShowImage (23)



ShowImage (24)

# Property Photos

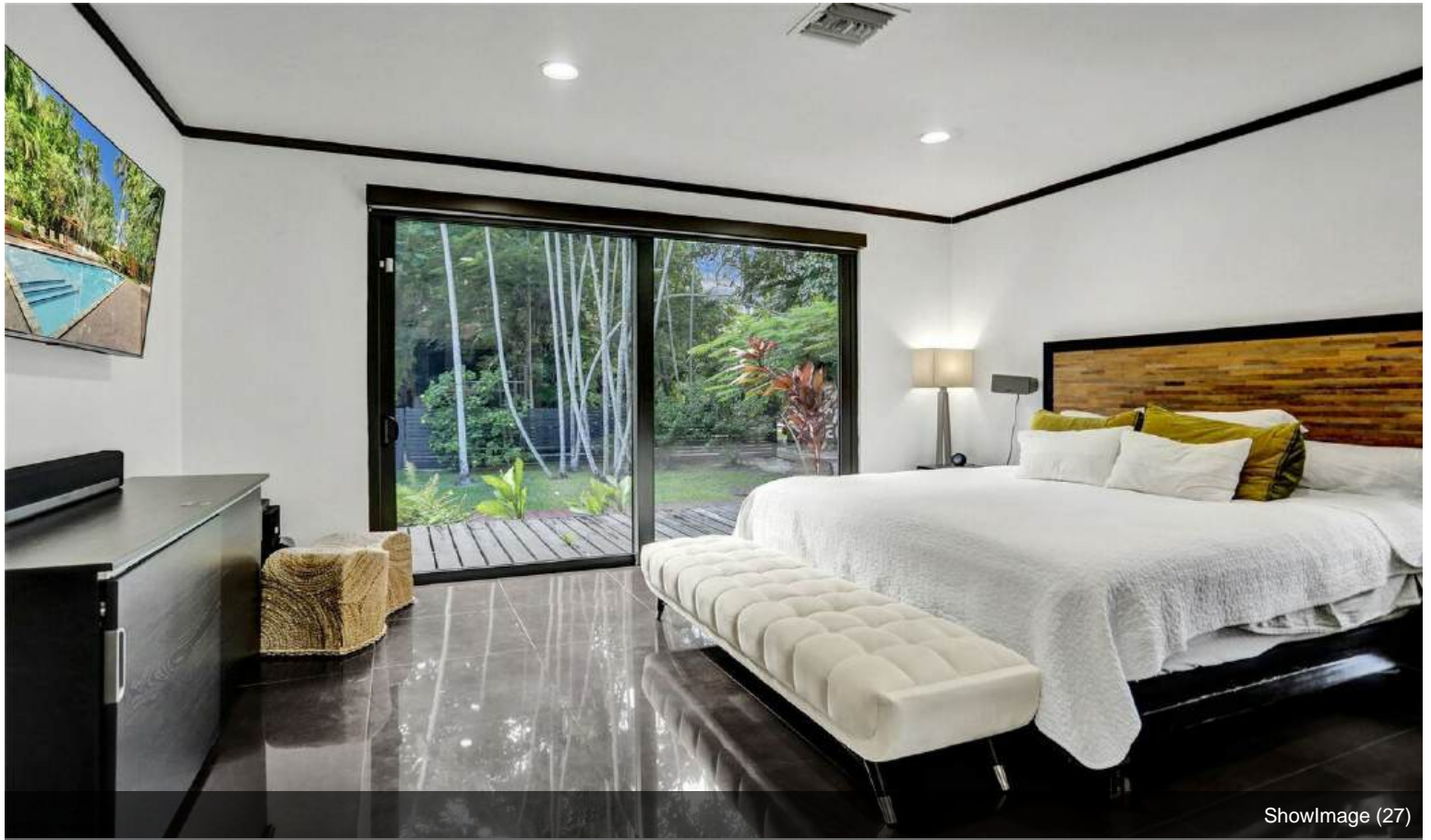


ShowImage (25)



ShowImage (26)

## Property Photos



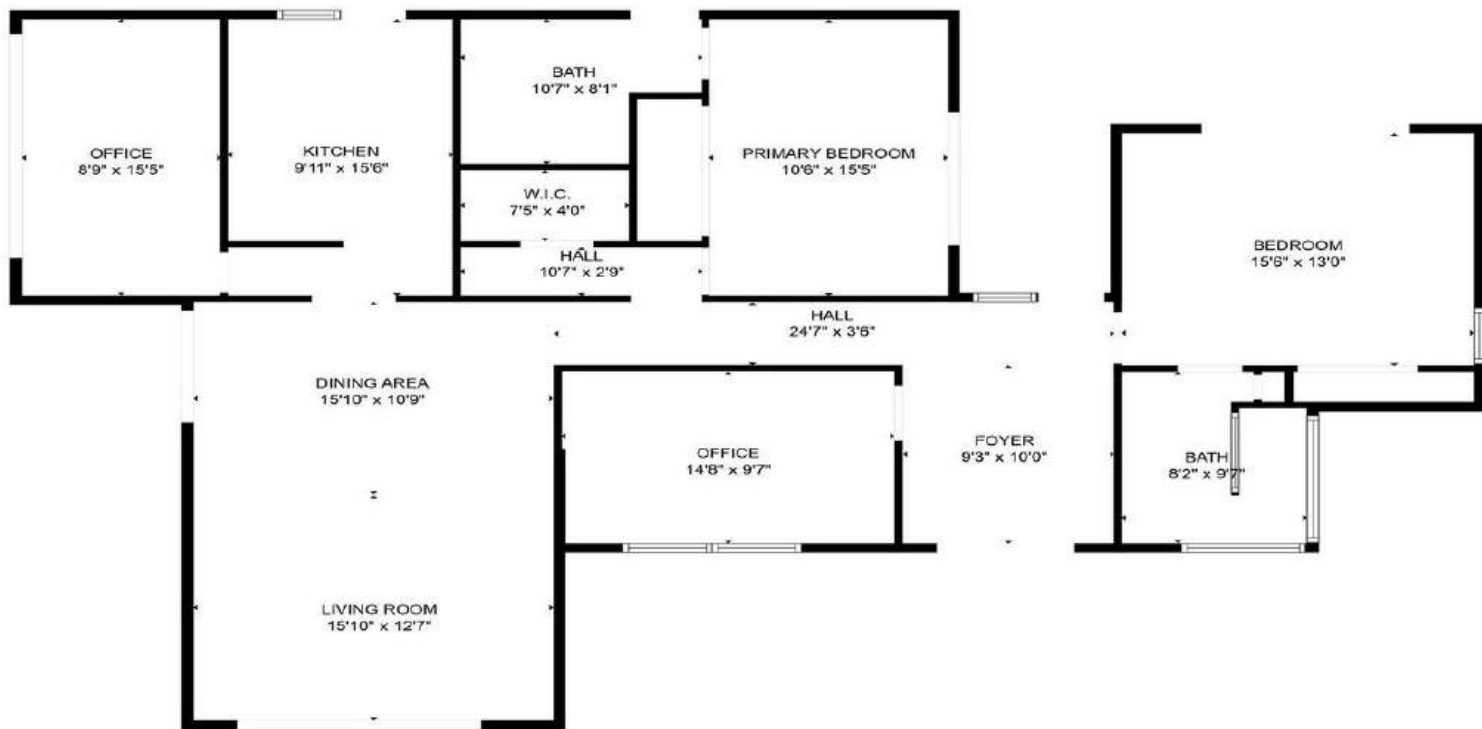
ShowImage (27)



ShowImage (28)



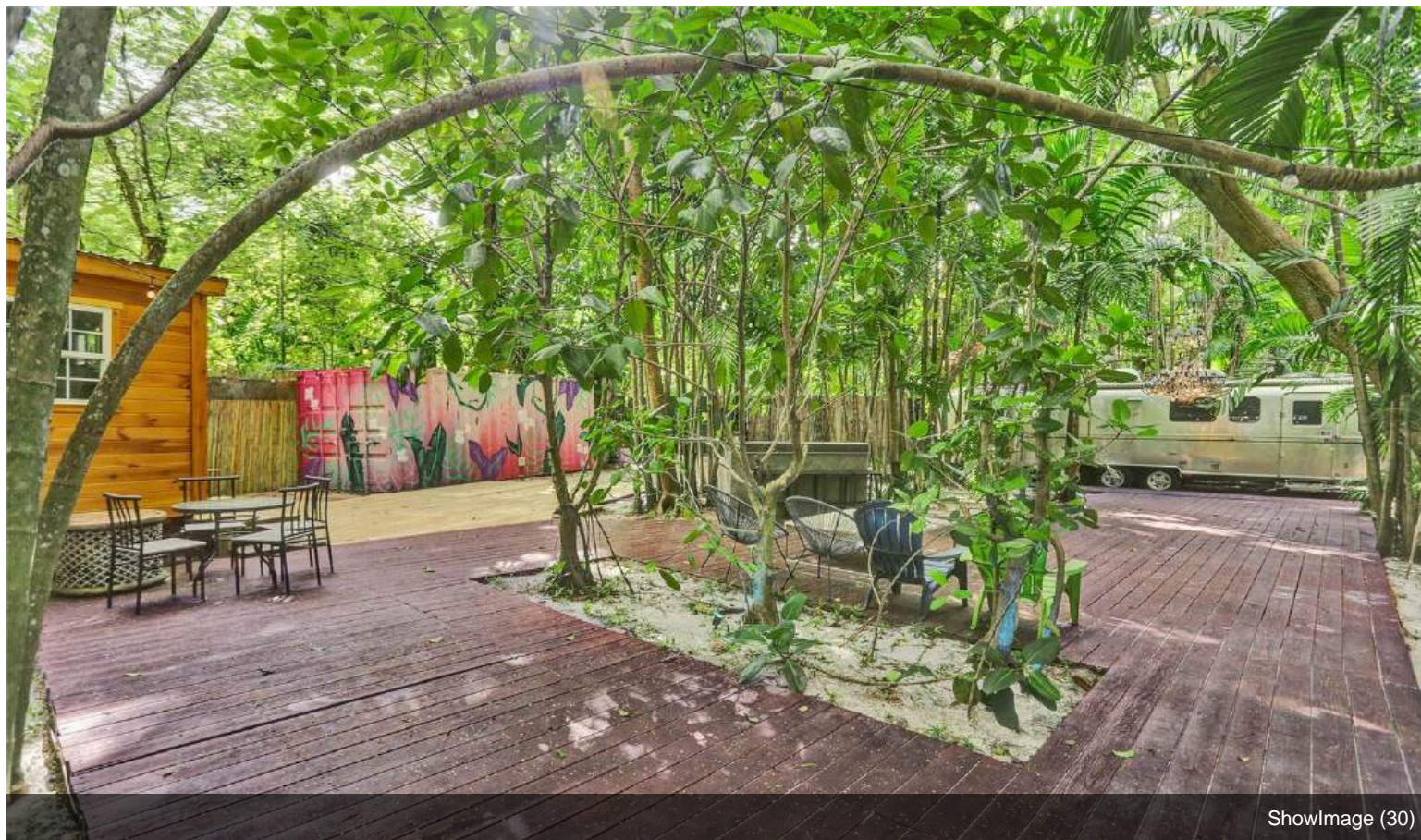
# Property Photos



TOTAL: 1649 sq. ft.  
FLOOR 1: 1649 sq. ft.

FLOOR PLAN CREATED BY CURICASA A/E. MEASUREMENTS DERIVED FROMLY RELIABLE BUT NOT GUARANTEED.

ShowImage (29)

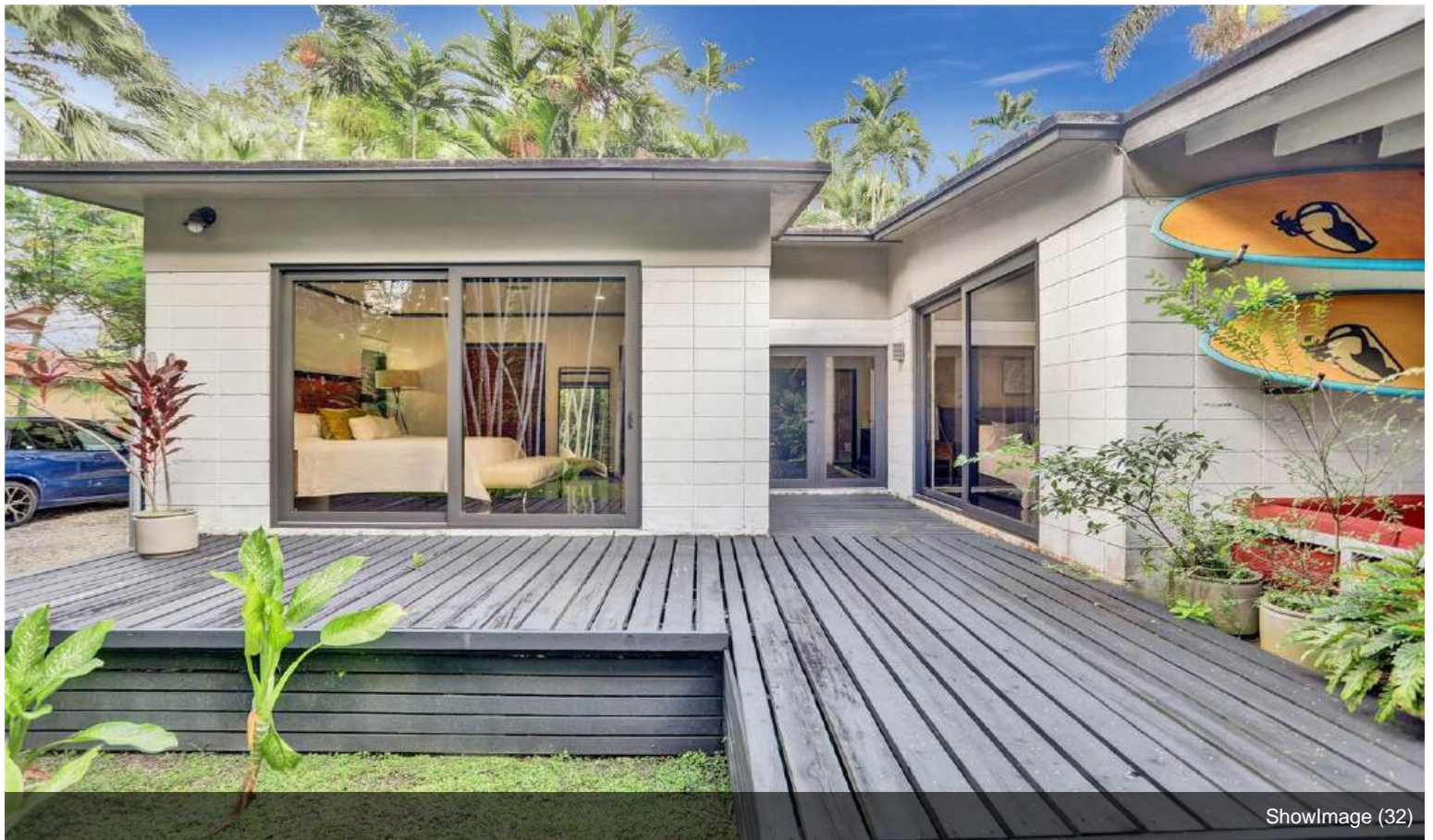


ShowImage (30)

# Property Photos



ShowImage (31)



ShowImage (32)

# Property Photos



ShowImage (33)



ShowImage (34)

## Property Photos



ShowImage (35)

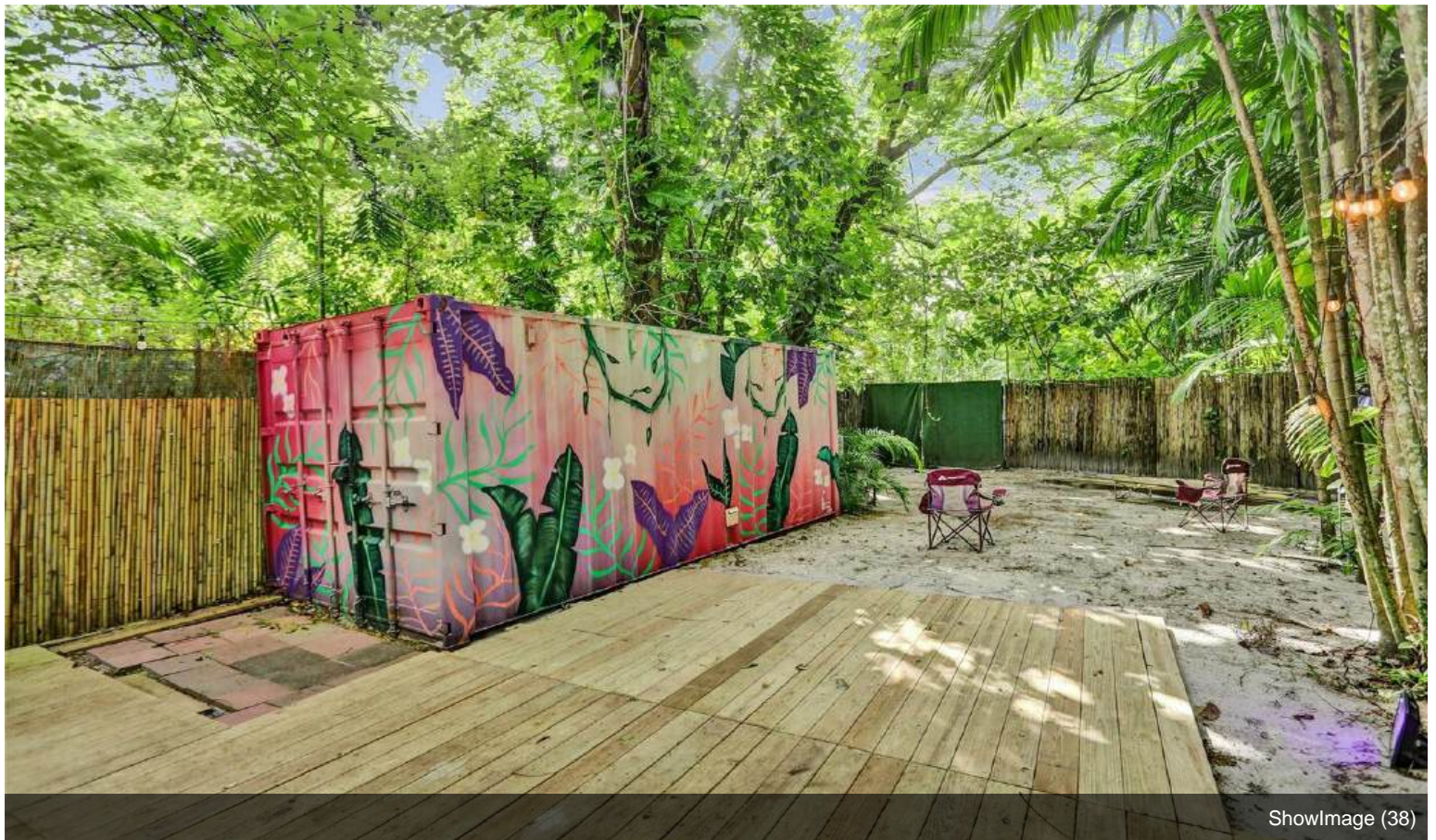


ShowImage (36)

## Property Photos



ShowImage (37)



ShowImage (38)

## Property Photos



ShowImage (39)



ShowImage (40)

# Property Photos



ShowImage (41)



ShowImage (42)

# Property Photos



ShowImage (43)



ShowImage (44)



## Property Photos



ShowImage (45)



ShowImage (46)

## Property Photos



ShowImage (47)



ShowImage (48)

# Property Photos



ShowImage (49)



ShowImage (50)

# Property Photos



ShowImage (51)



ShowImage (52)

## Property Photos



ShowImage (53)

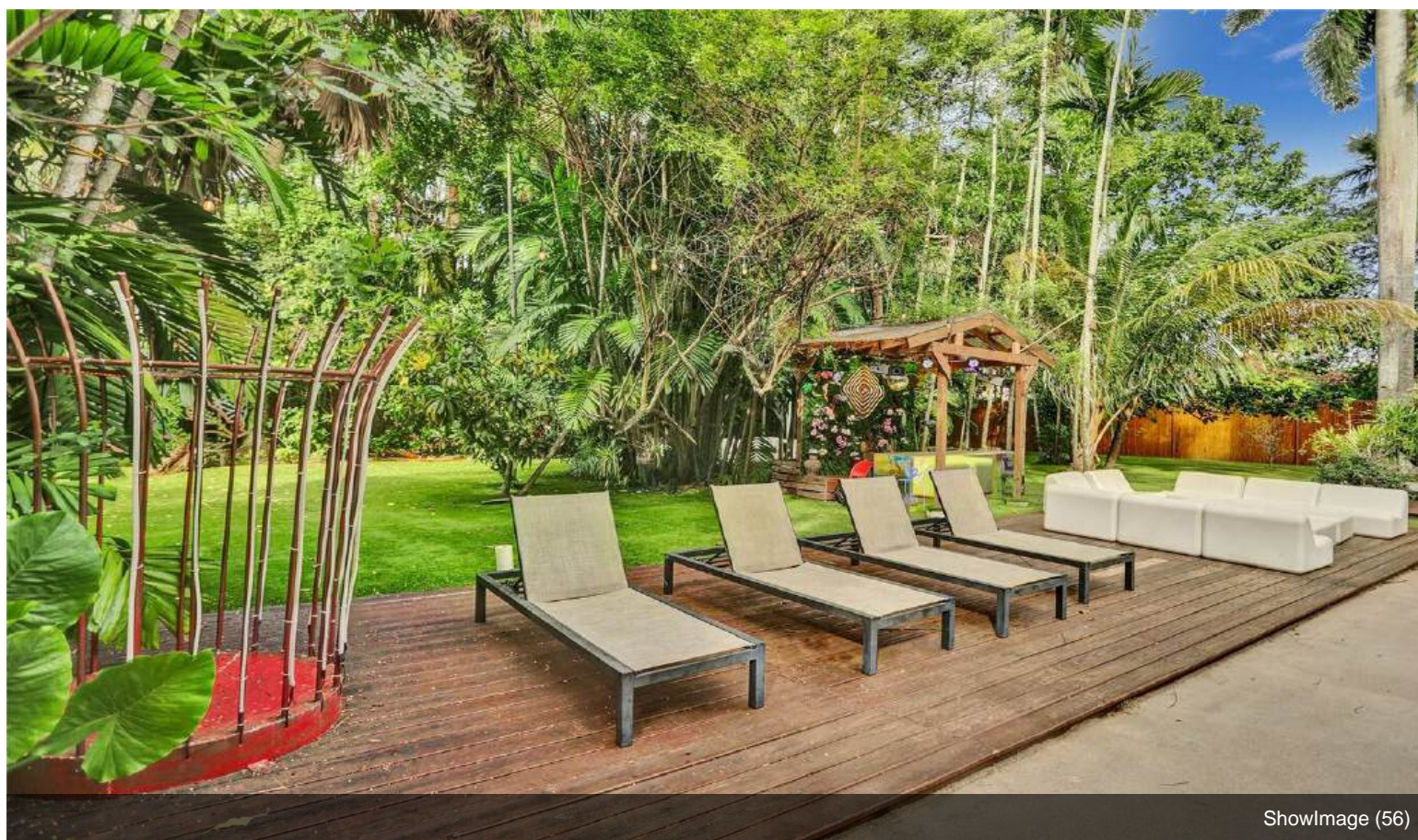


ShowImage (54)

## Property Photos

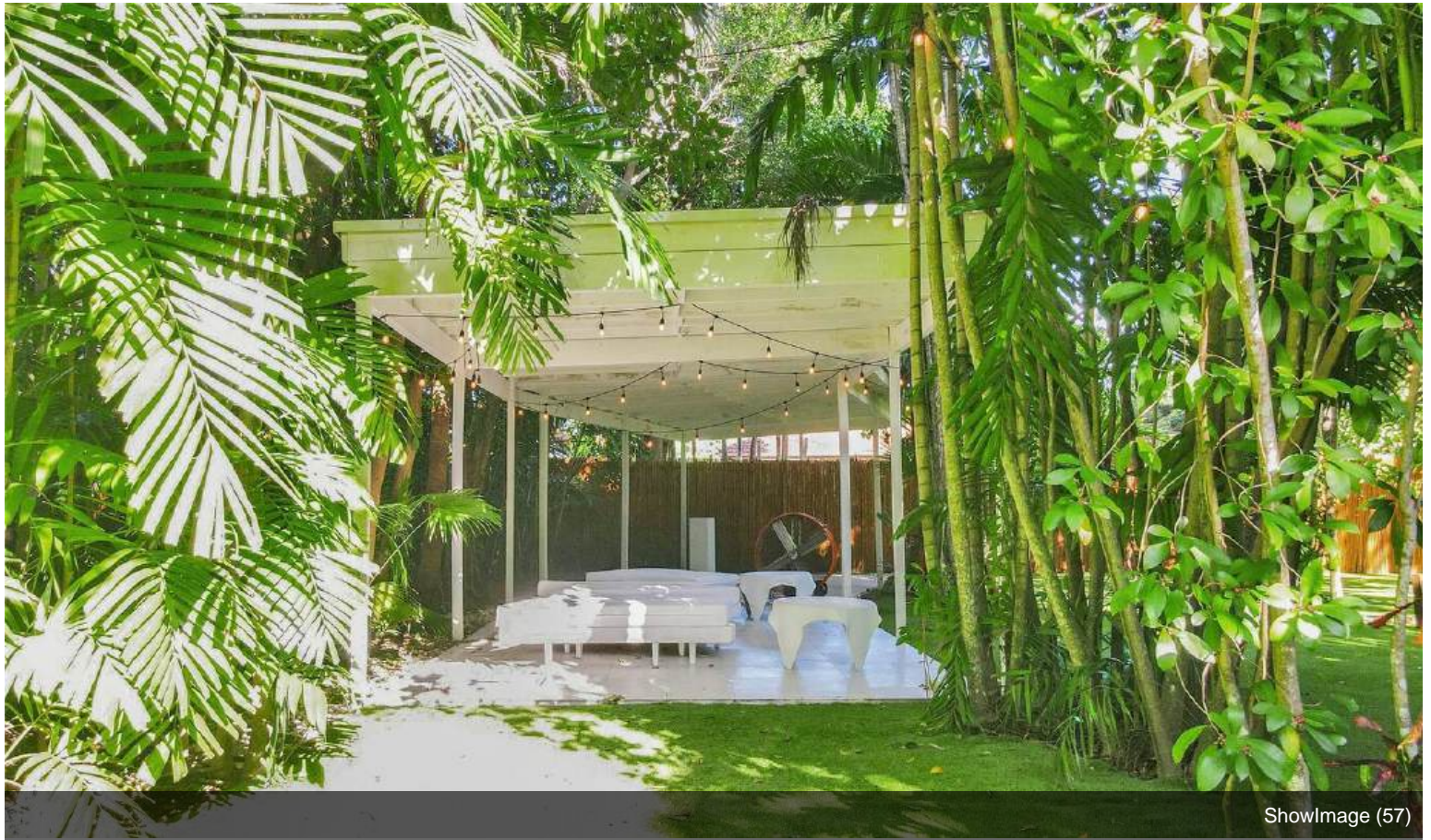


ShowImage (55)

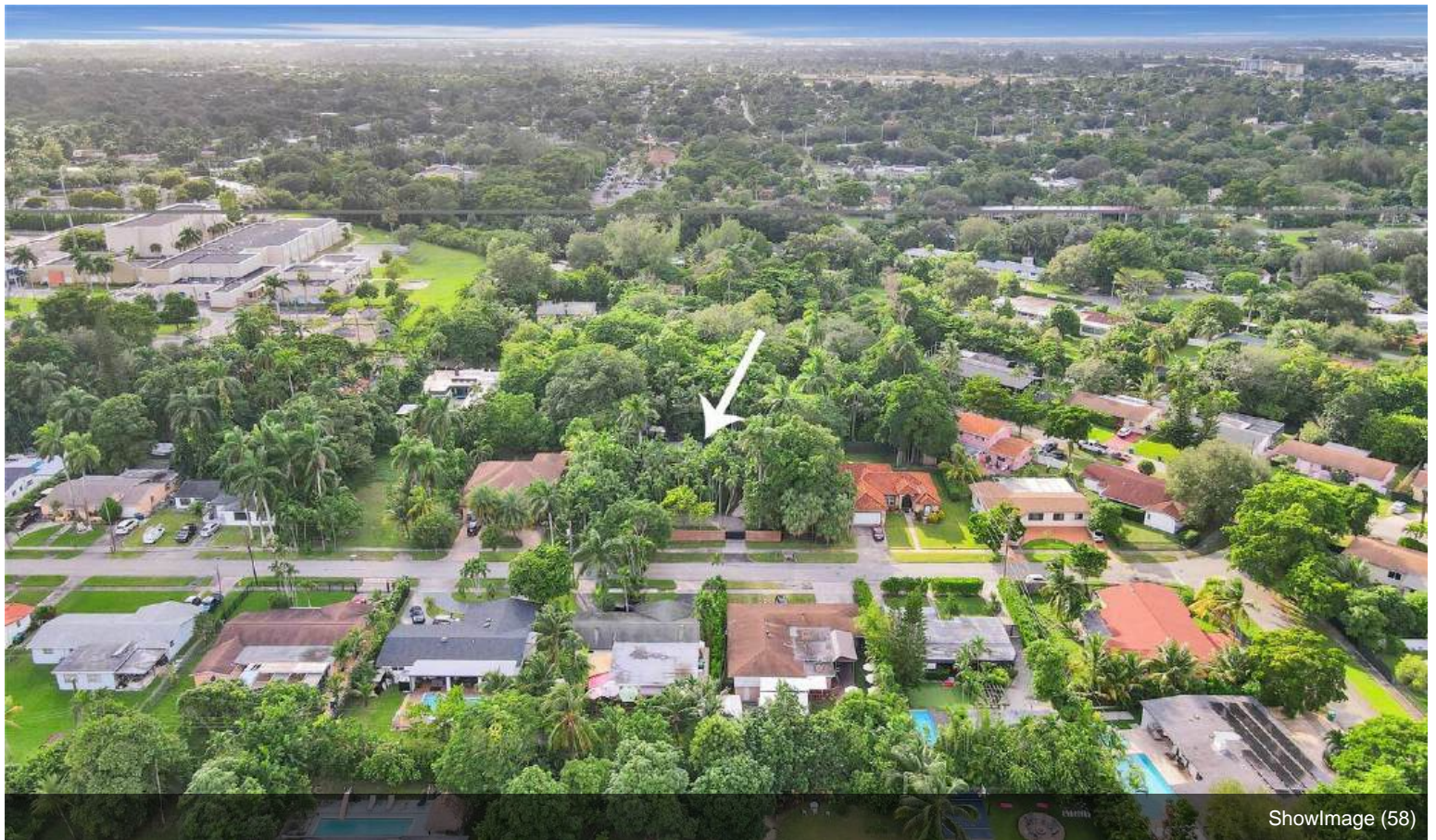


ShowImage (56)

## Property Photos

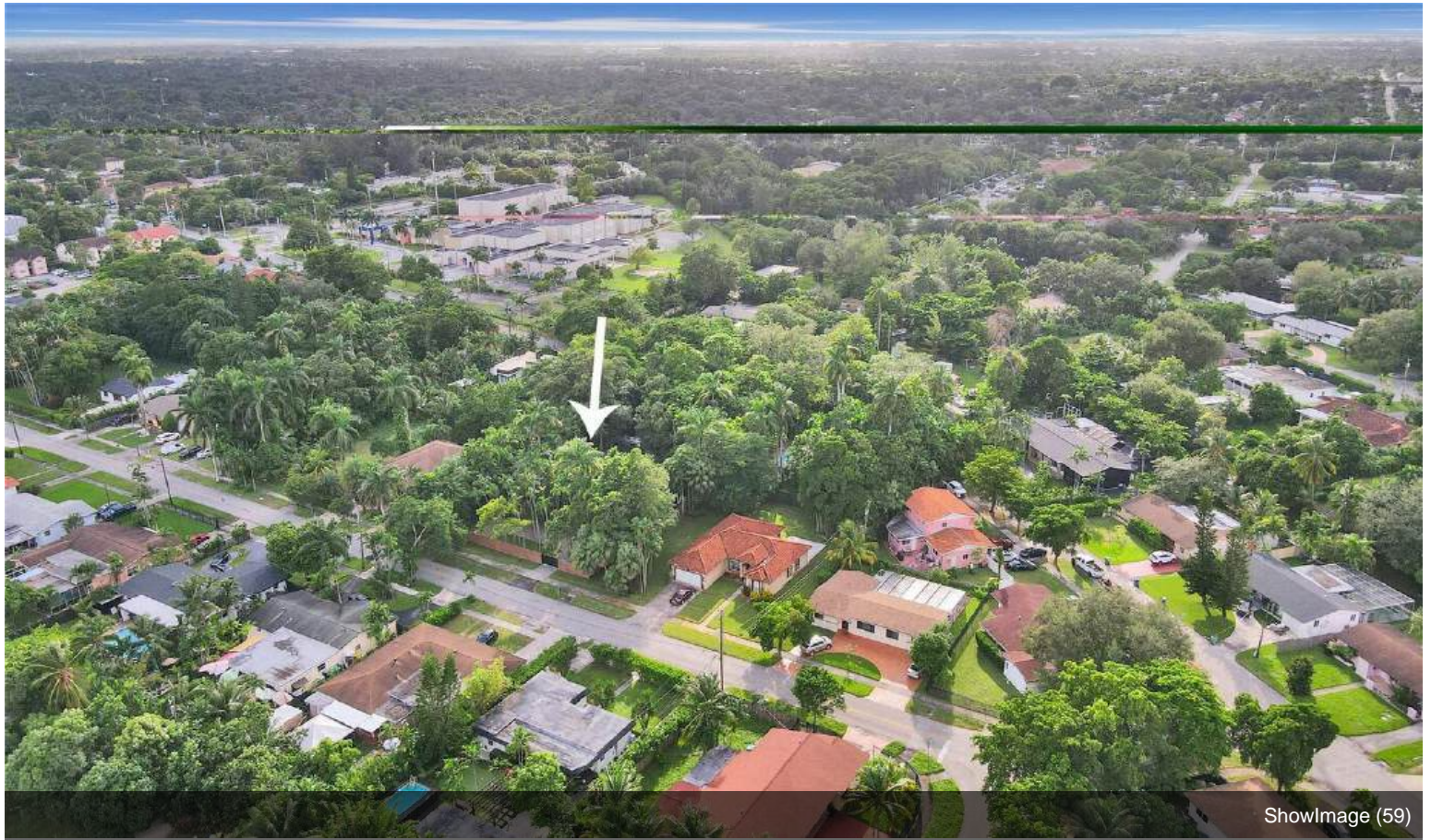


ShowImage (57)



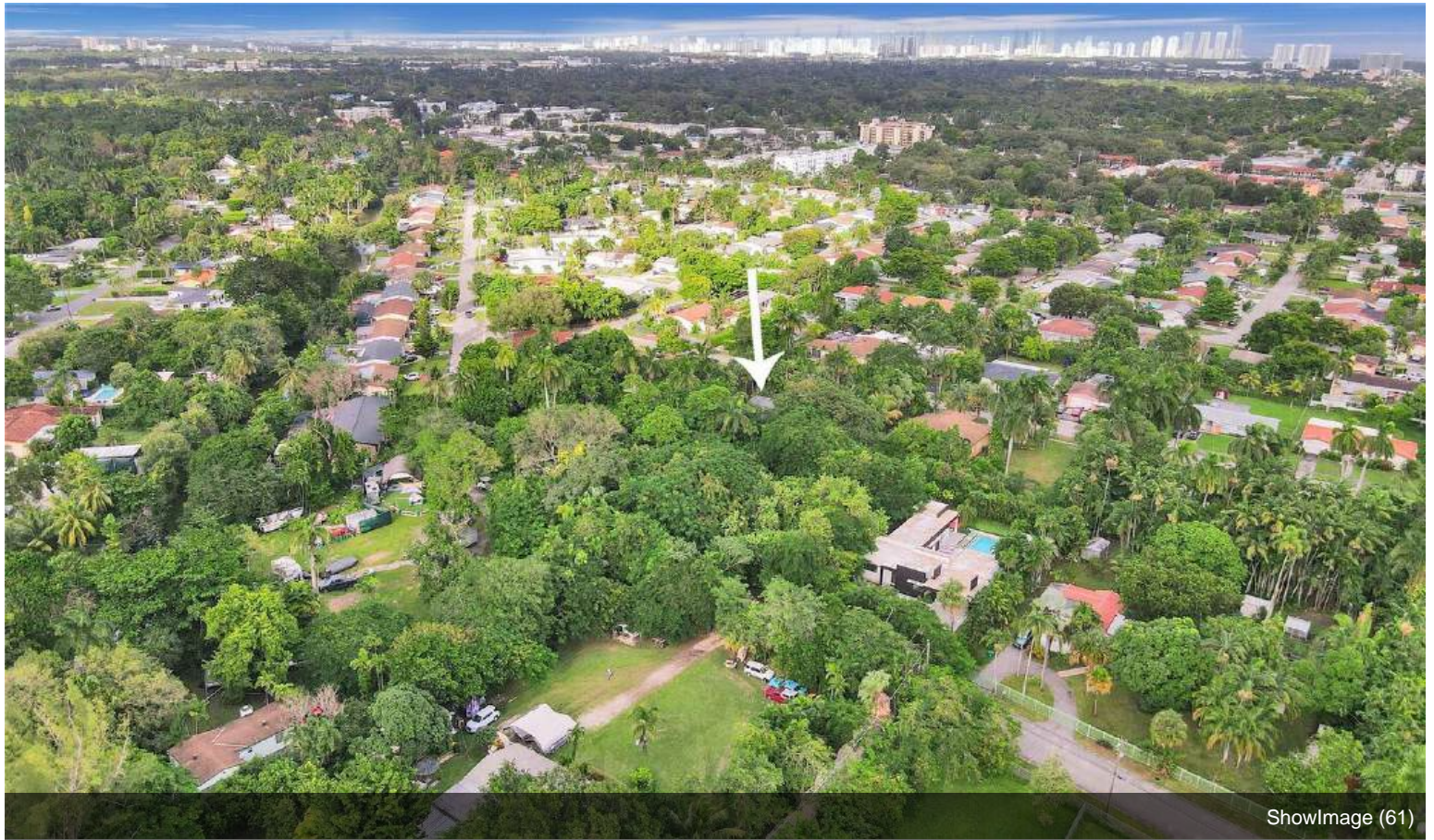
ShowImage (58)

# Property Photos

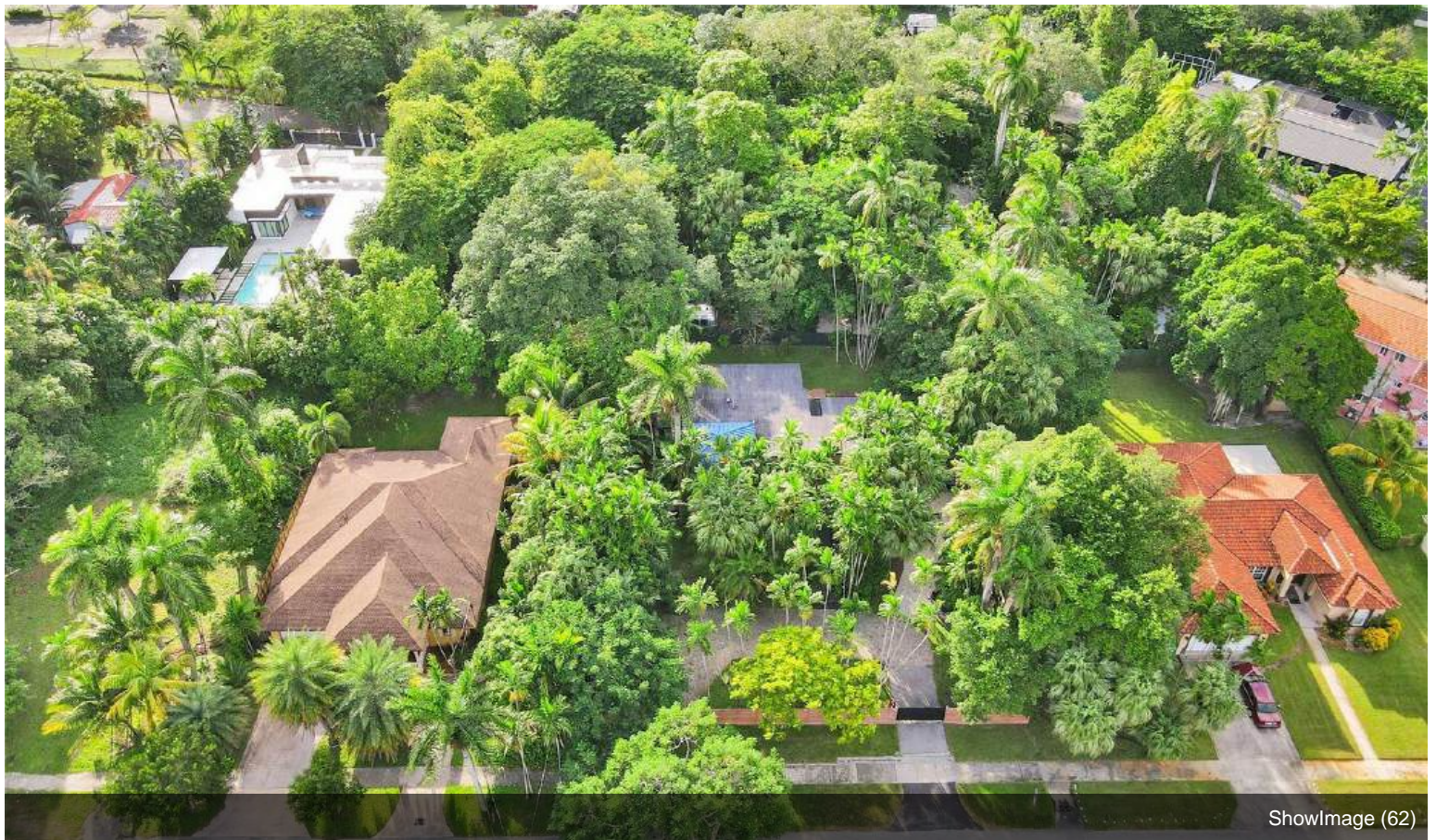




# Property Photos



ShowImage (61)



ShowImage (62)