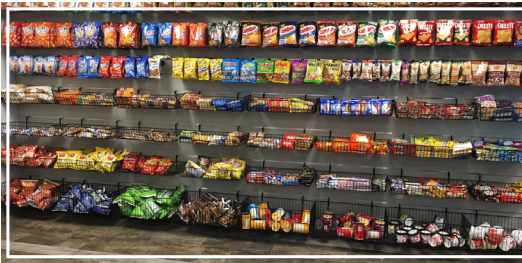


STONERIDGE I

41000/41100 WOODWARD AVENUE, BLOOMFIELD HILLS



PREMISES

- Three-story, 150,000 SF office building with two connected wings

AVAILABILITY

- 1st Floor: 22,018 SF
- 2nd Floor: Suite from 4,729 SF up to 23,954 SF
- 3rd Floor: Suite from 2,727 SF up to 24,258 SF (divisible)
- ENTIRE WEST (41100) BUILDING

RENTAL RATE

- \$19.95 psf
- 2026 Base Year, plus electricity

FEATURES AND AMENITIES

- **PROMINENT BUILDING SIGNAGE AVAILABLE**
- Fully-equipped fitness center with Peloton bikes
- Micro-market, grab n' go food service.
- Magnificent wooded setting in the heart of Bloomfield Hills
- Inviting three-story rotunda lobbies and recently renovated common areas and restrooms
- Convenient points of entry, including walk-out access on both first and second floors
- Well-lit parking with adjacent 2-level covered parking deck
- Computerized security/entry access
- Convenient I-75 access less than a mile away
- Nearby hotels and fine restaurants

FOR MORE INFORMATION

Dan Leppink | dleppink@kojaian.com
Eric Horwitz | ehorwitz@kojaian.com
Kojaian Management Corporation
Kojaian.com
248.644.7600

MORE THAN
BUILDINGS

LOCATION | BUSINESS | IMAGE | SUCCESS

KOJAIAN

KOJAIAN.COM

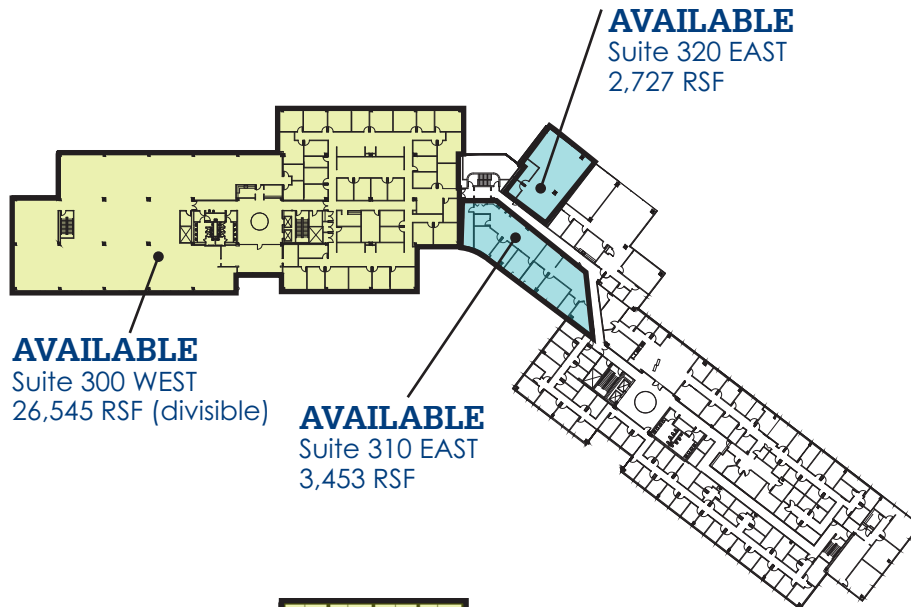
STONERIDGE I

41000/41100 WOODWARD AVENUE, BLOOMFIELD HILLS

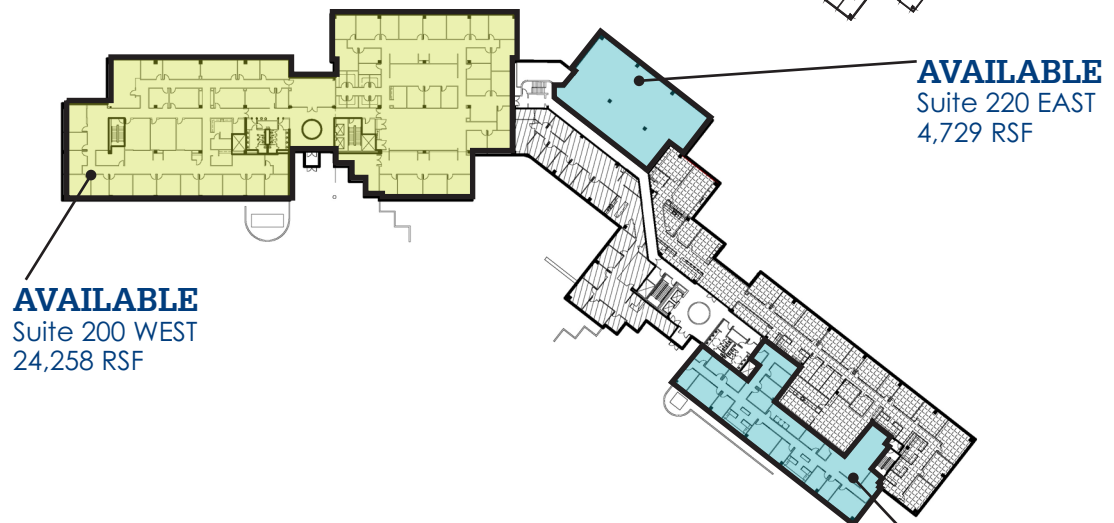
 41100 WOODWARD AVENUE -AVAILABILITY

 41000 WOODWARD AVENUE -AVAILABILITY

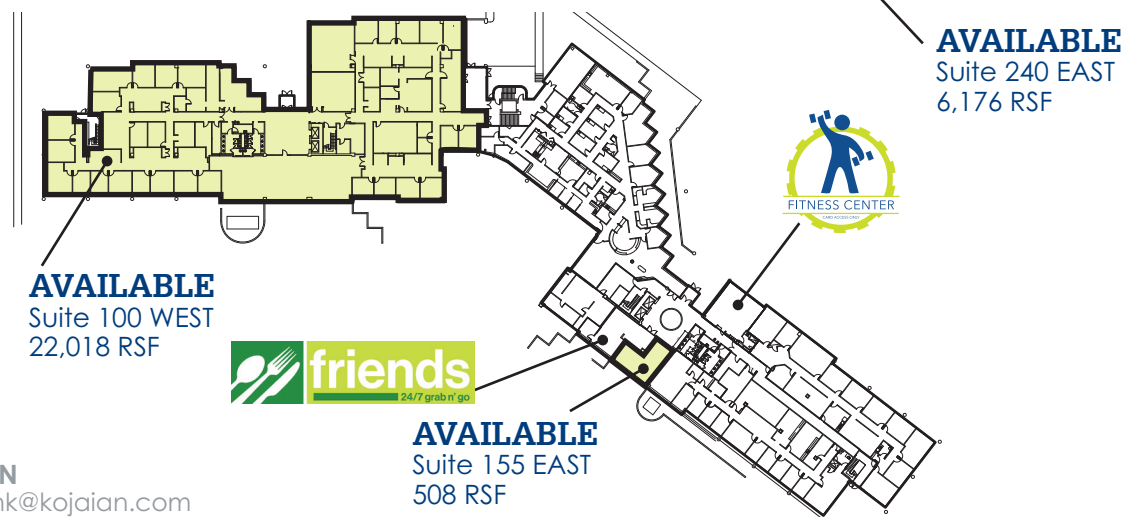
THIRD FLOOR



SECOND FLOOR



GROUND FLOOR



FOR MORE INFORMATION

Dan Leppink | dleppink@kojaian.com
Eric Horwitz | ehorwitz@kojaian.com
Kojaian Management Corporation
Kojaian.com
248.644.7600