

**Lease Rate:****\$9.95/SF**

\$1.40/SF NNN

FOR LEASE

# 160 E 19th St Holland, MI

Holland Office/Industrial Flex Space

## Property Highlights

- 2,552 SF Suite Available
- (1) Glass Overhead Door
- 12' 7" Clear Height
- Open Floor Plan with (1) Conference Room and (2) Offices
- Private Pedestrian Entrance
- (1) Private Restroom and Kitchenette
- Previously Occupied by AVI for National Communication and Audio-Visual Services

### CONTACT US

**Chris VanderBand**

Senior Associate

616 258 0128

chris.vanderband@colliers.com

**Colliers West Michigan**

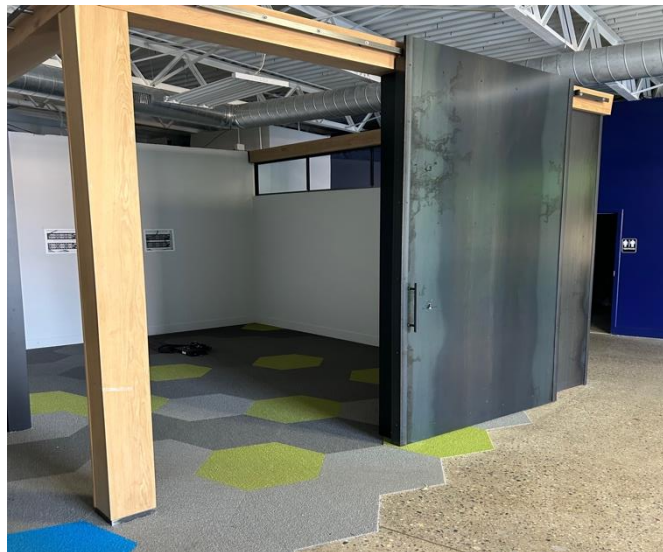
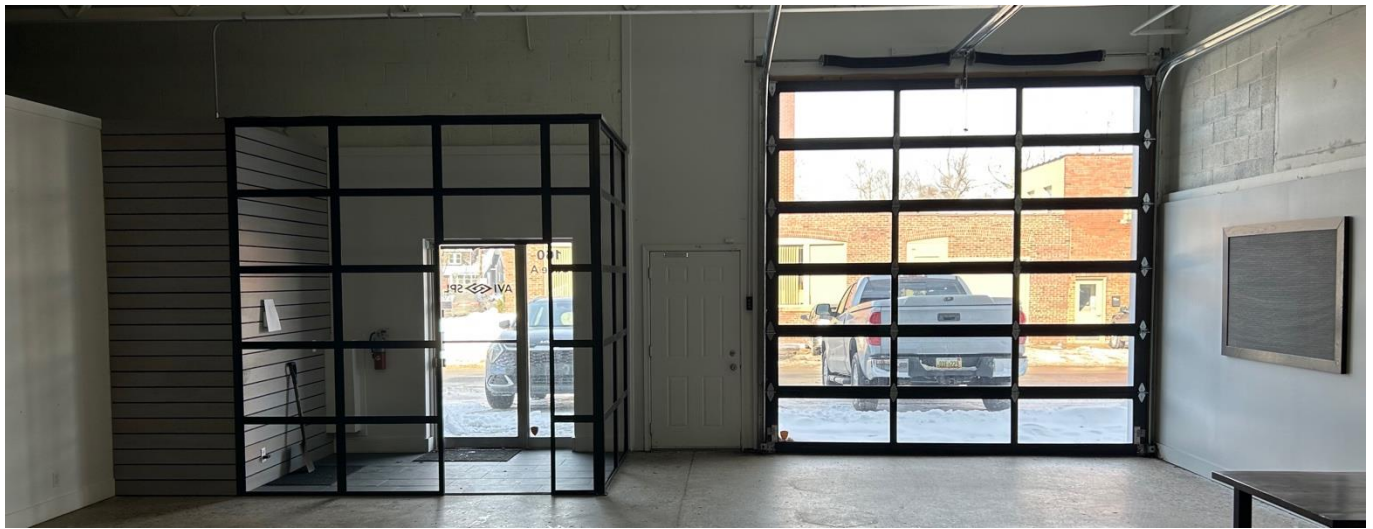
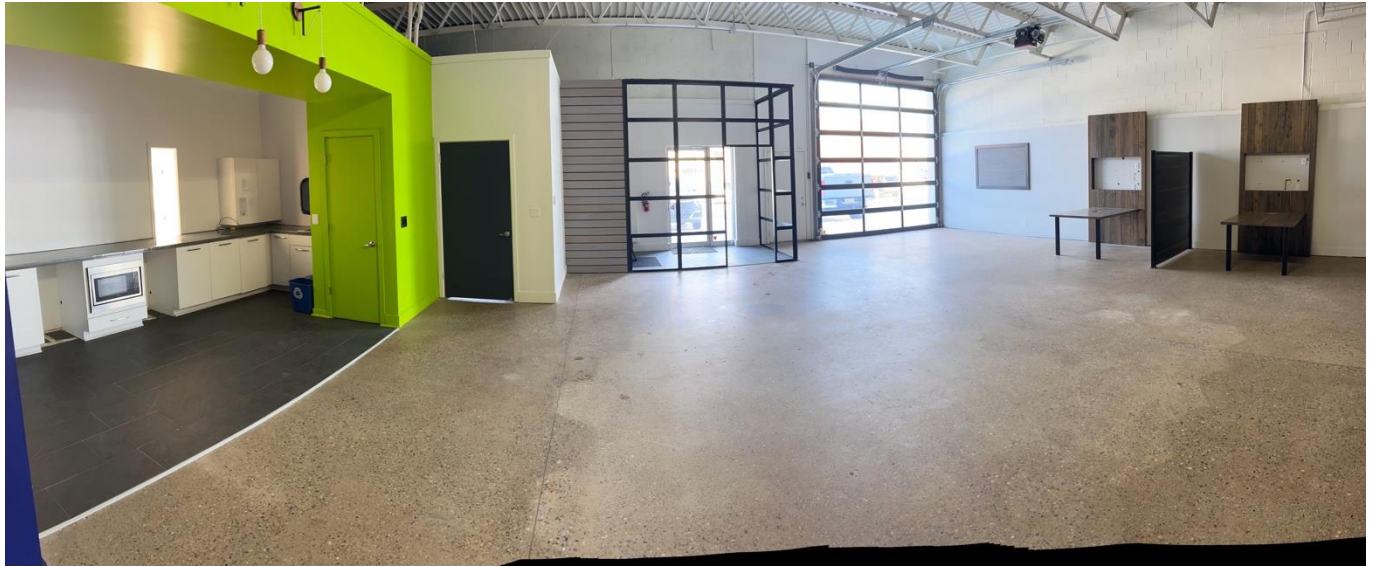
333 Bridge St NW, Suite 1010

Grand Rapids, MI 49504

colliers.com/westmichigan



# Interior Photos



# Building Specifications



## Property Details

<b>Gross SF:</b>	2,552 SF
<b>Year Built:</b>	1920
<b>Overhead Door:</b>	1
<b>Municipality:</b>	City of Holland
<b>Zoning:</b>	I-1
<b>Acres:</b>	0.82 Acres
<b>Parcel Id:</b>	70-16-32-232-001

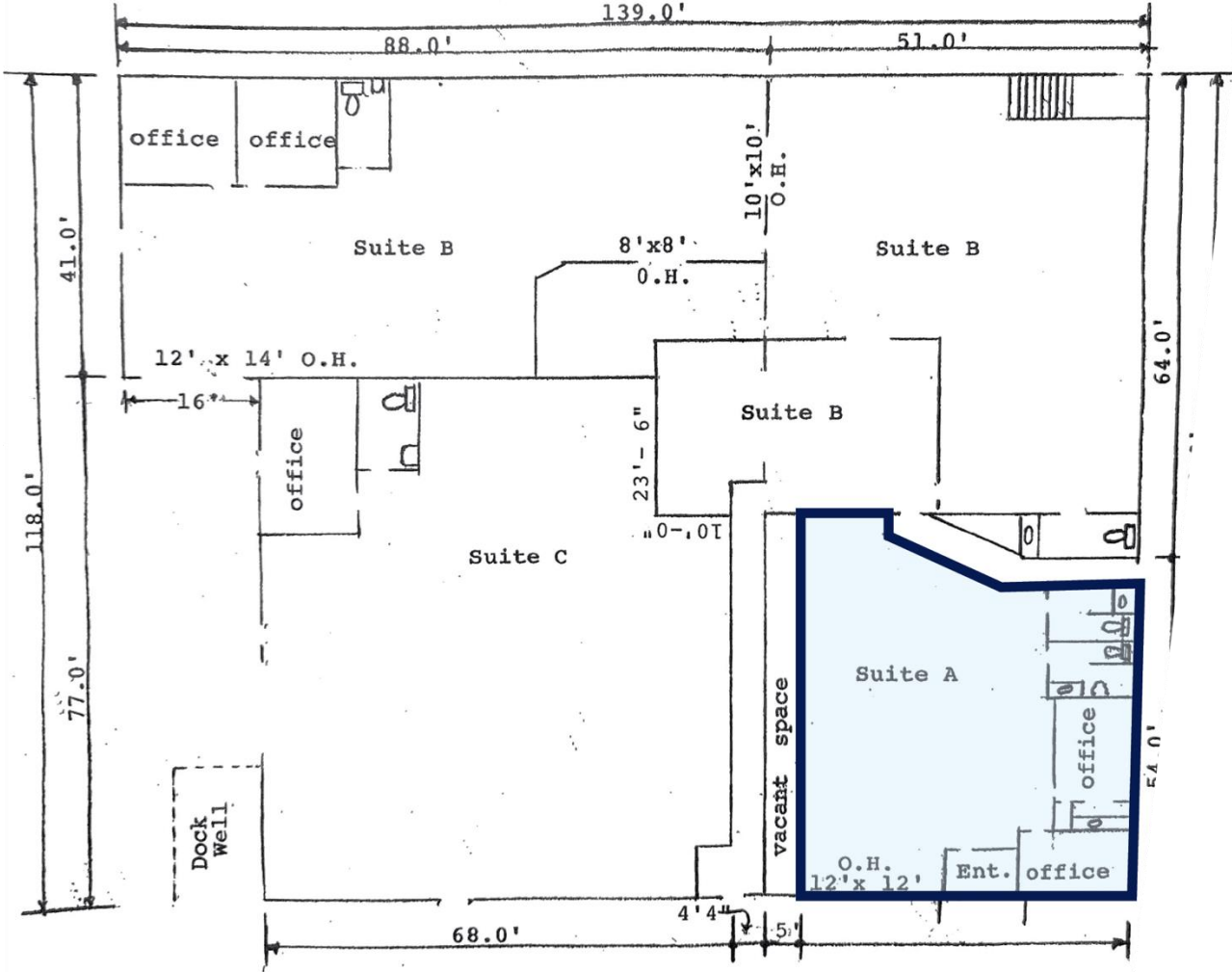
## Financials

<b>Lease Rate:</b>	\$9.95/SF
<b>Monthly Rate:</b>	\$2,116
<b>Lease Type:</b>	NNN
<b>NNN Expense</b>	\$1.40/SF
<b>Availability</b>	April 1 <sup>st</sup> 2026

## Location Highlights

- Established Neighbors Include Haveman Electrical Services and Worden Company
- Located Less Than 0.5 Miles from the Hope College and Downtown Holland and 1.3 Miles From US-31

# Floor Plan

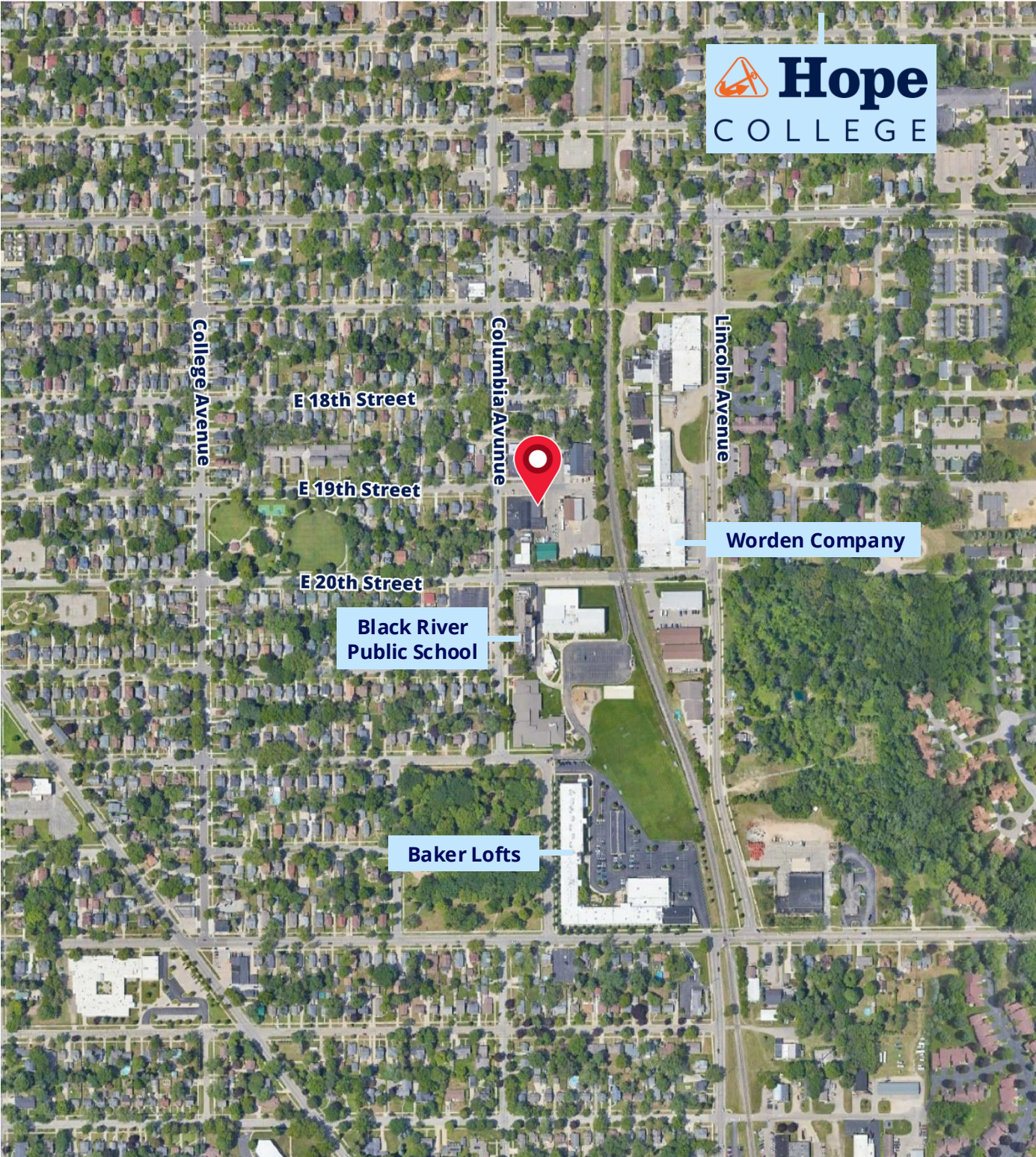


Suite A  
2,552 SF

# Aerial Map



# Merchant Map



# Demographics

CURRENT YEAR SUMMARY	1 MILE RADIUS	3 MILE RADIUS	5 MILE RADIUS
Total Population	13,799	51,603	100,477
Total Households	4,856	20,363	38,873
Total Family Households	2,839	12,688	25,898
Average Household Size	2.38	2.41	2.51
Median Age	31.5	37.0	38.1
Population Age 25+	8,043	34,105	67,855
5 YEAR PROJECTED TRENDS: ANNUAL RATE			
Population	0.25%	0.53%	0.52%
Households	0.72%	0.94%	0.90%
Families	0.47%	0.72%	0.70%
Median Household Income	1.41%	1.96%	1.85%
CURRENT YEAR POPULATION BY SEX			
Male Population / % Male	47.2%	48.9%	49.4%
Female Population / % Female	52.8%	51.1%	50.6%
INCOME & HOUSEHOLDS SUMMARY			
2025 Median Household Income	\$75,042	\$70,921	\$79,058
Average Household Income	\$91,766	\$91,336	\$101,874
Per Capita Income	\$32,805	\$35,838	\$39,517
SUMMARY BUSINESS DATA			
Total Businesses	855	2,869	4,043
Total Daytime Population	19,433	71,138	114,500
Daytime Population: Workers	12,783	46,682	68,465
Daytime Population: Residents	6,650	24,456	46,035

#### Data Notes:

- Household population includes persons not residing in group quarters. Average Household Size is the household population divided by total households. Persons in families include the householder and persons related to the householder by birth, marriage, or adoption.
- Income represents the preceding year, expressed in current dollars. Household income includes wage and salary earnings, interest dividends, net rents, pensions, SSI and welfare payments, child support, and alimony.
- Per Capita Income represents the income received by all persons aged 15 years and over divided by the total population.



**Chris VanderBand**  
616 258 0128  
chris.vanderband@colliers.com