

FOR SALE

# S.A.G.E. Complex

510 Stewart Drive, Syracuse, New York 13212



Multi-Level Industrial Building

## 194,876± SF Secure Industrial Facility

### Property Highlights

This unique, multi-level building that opened in 1956 was constructed by the U.S. Military as a secure, controlled facility, capable of surviving a nuclear disaster. The complex has no windows, two-foot-thick reinforced concrete walls and one-foot-thick reinforced concrete floors.

- 194,876± SF total square feet in four buildings:
  - **Building 501** – 74,437± SF on three levels with rooftop helipad
    - Ceiling heights:
      - 1<sup>st</sup> Floor – 13'
      - 2<sup>nd</sup> Floor – 18'
      - 3<sup>rd</sup> Floor – 13'
  - **Building 502** – 96,657± SF on four levels
    - Ceiling heights:
      - 1<sup>st</sup> Floor – 18'
      - 2<sup>nd</sup> Floor – 13'
      - 3<sup>rd</sup> Floor – 16'
      - 4<sup>th</sup> Floor – 21'
  - **Building 503** – 23,296± SF, previously housed backup generators
  - **Building 504** was a water-cooling tower (SF not counted in over total square footage of site)
- Total square footage includes a 486± SF security office at the main entrance
- Facility has one (1) dock door that has access to two (2) 8-ton freight elevators (one in each building)
- Potential to add docks or overhead doors in various locations around the complex.
- Ground level of facility is 60,000± SF and shared between the two buildings
- Situated on 10.91± acres
- Site is securely fenced making it ideal for an owner/user with outdoor storage
- Parking available on site as well as across Stewart Drive in separate striped/paved lot
- The Property is located north of the City of Syracuse within two miles of Hancock International Airport, 1-81 and I-90 (New York State Thruway)

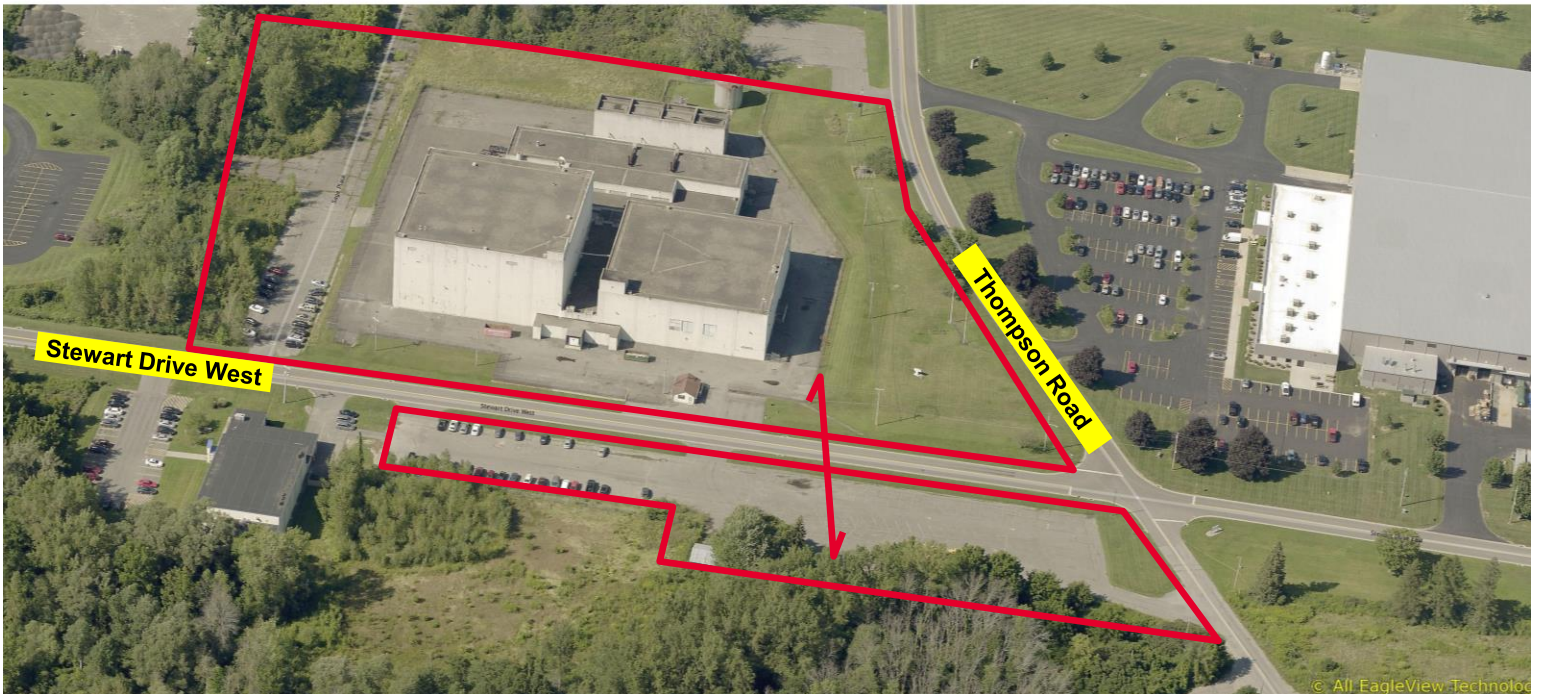
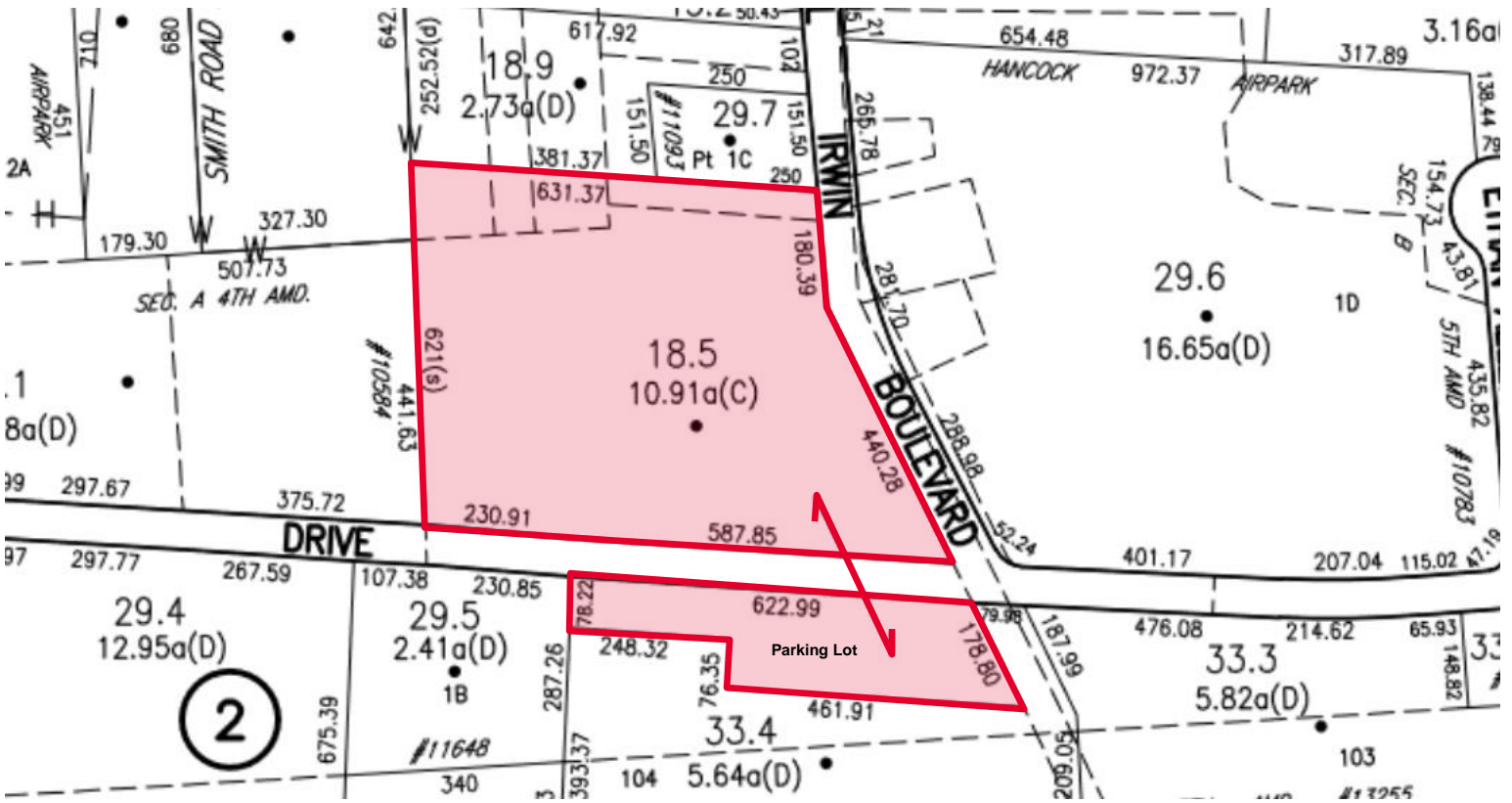
### Contact

**KIMBERLY BOYNTON**  
Real Estate Salesperson  
+1 315 445 8535  
kboynton@pyramidbrokerage.com

5845 Widewaters Pkwy, Suite 200  
East Syracuse, New York 13057  
+1 315 445 1030  
pyramidbrokerage.com

FOR SALE

510 Stewart Drive | Syracuse, New York 13212



Approximate plot lines, subject to verification of survey

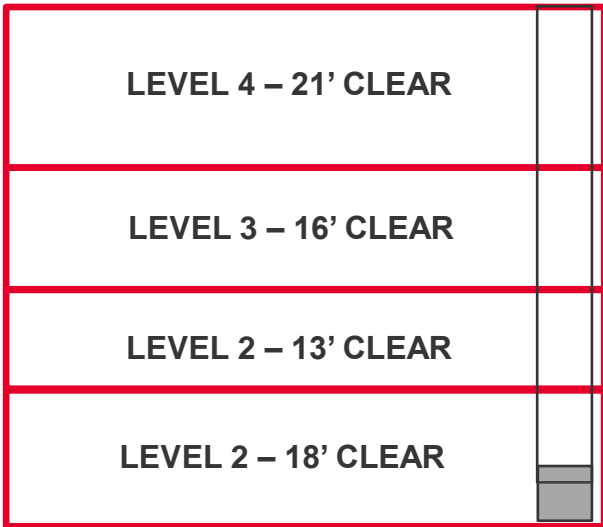


**FOR SALE**

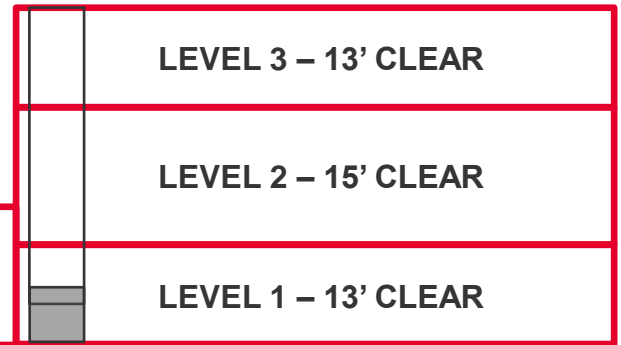
**510 Stewart Drive | Syracuse, New York 13212**



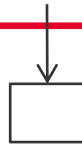
**Building 502**



**Building 501**



**SHARED  
DOCK DOOR**



**1 of 2 8-Ton Elevators  
Adjacent to Loading Dock**



**Common Ground Level for Buildings 501 & 502**





FOR SALE

510 Stewart Drive | Syracuse, New York 13212

