

# FOR LEASE



## Property Highlights:

- 1,005 RSF 2nd Floor office suite with conference room and open office space
- Class A atrium office building in Bel Aire Office Park
- Free surface parking at 5/1000 rsf ratio
- Easy access to the I-270/Manchester Road interchange
- Banks, restaurants, service stations, movie theatre, shopping, West County Mall, Des Peres Lodge and Missouri Athletic Club within one-mile radius
- On-site day porter/maintenance
- Professionally managed by Johnson Group, Inc.

**FOR LEASE:**  
**\$22.00 prsf,**  
**full service**

## **12825 Flushing Meadows Drive Suite 230 Town & Country, MO 63131**

For more information, contact  
(314) 862-3000

Daniel J. Johnson (ext. 2)  
danj@j-group.com

or

Sheldon Johnson, SIOR (ext. 6)  
shell@j-group.com

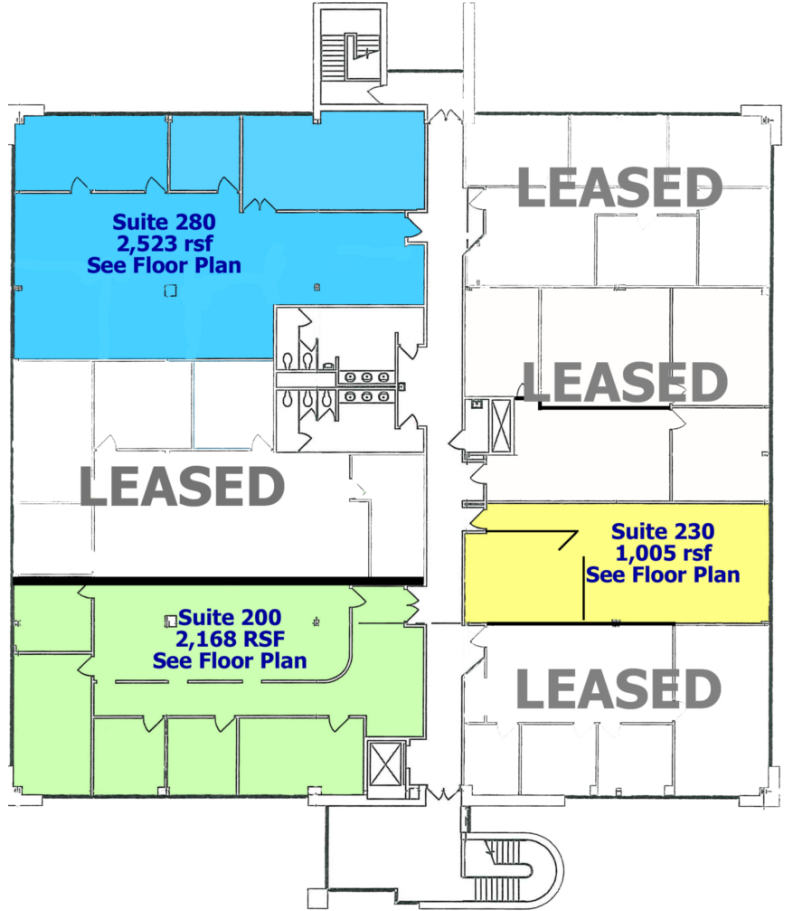
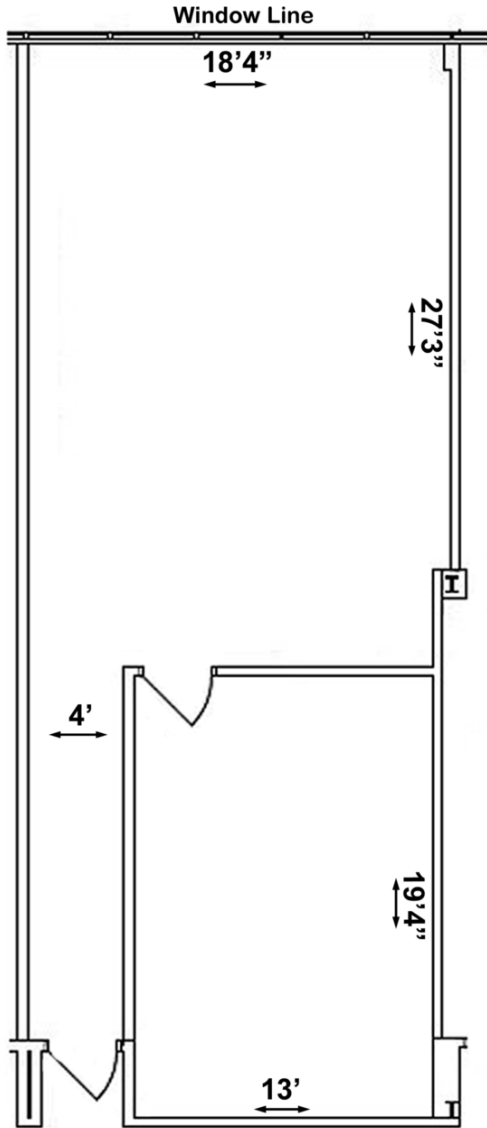
**Johnson  
Group**

1714 Deer Tracks Trail, Suite 100  
St. Louis, Missouri 63131  
(314) 862-3000  
www.j-group.com



Information contained herein has been obtained from the owner of the property or from other sources deemed reliable; however, Broker does not guarantee the accuracy or completeness of this information. Broker cannot guarantee the suitability of these premises for the ultimate lessee's intended use or investment nor does Broker make any representation as to the environmental or other condition of the property and recommends that prospective lessee investigate fully. All properties are subject to prior sale, lease, change or withdrawal. Neither listing broker(s) nor Johnson Group shall be responsible for any typographical errors, misinformation, or misprints and shall be held totally harmless.

**12825 Flushing Meadows Drive  
Suite 230  
±1,005 RSF Office**



**Very desirable Town & Country Location!**

