

1650 Temple Ln.

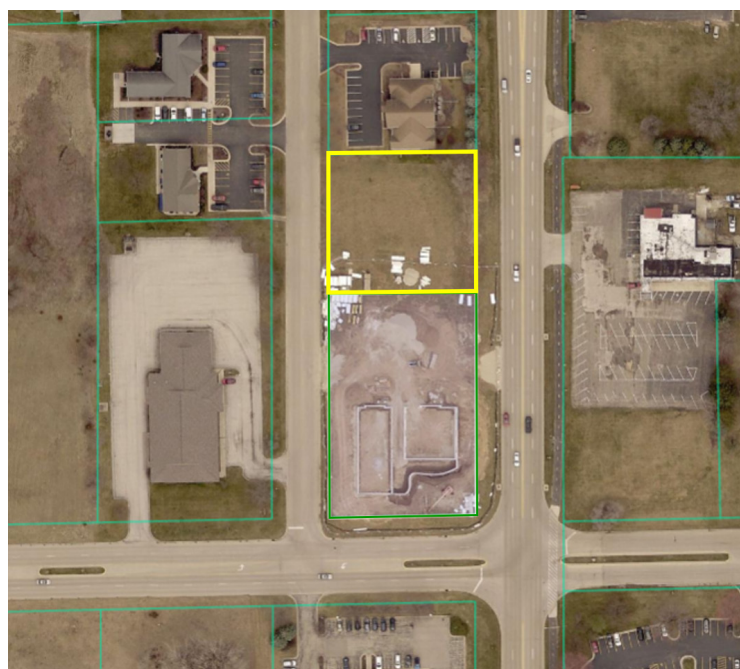
Cherry Valley, IL



Property Highlights

- Retail/Commercial Opportunity!
- Located near other office, service and retail including adjacent restaurant and 6,064 SF of office/retail under construction
- Surrounding prime retailers include CherryVale Mall, Menards, Starbucks, Walmart, McDonald's and many more.
- Two miles south of the I-90/E. State St. interchange
- One mile north of the I-39/Hwy 20 interchange

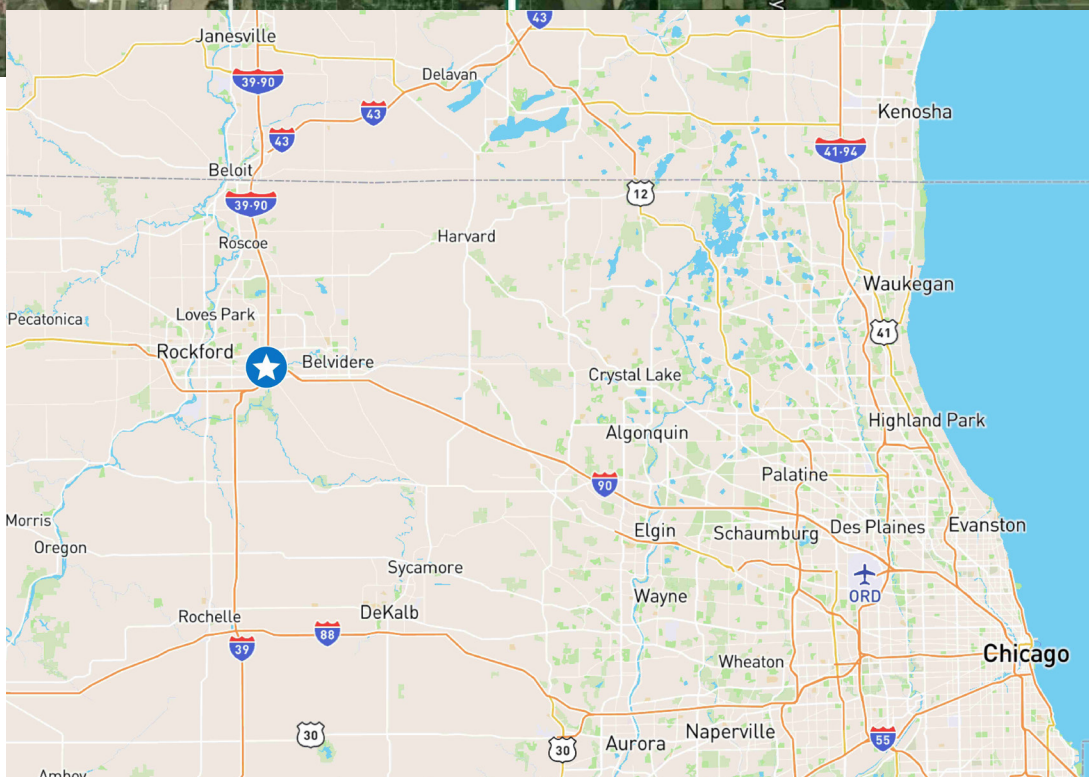
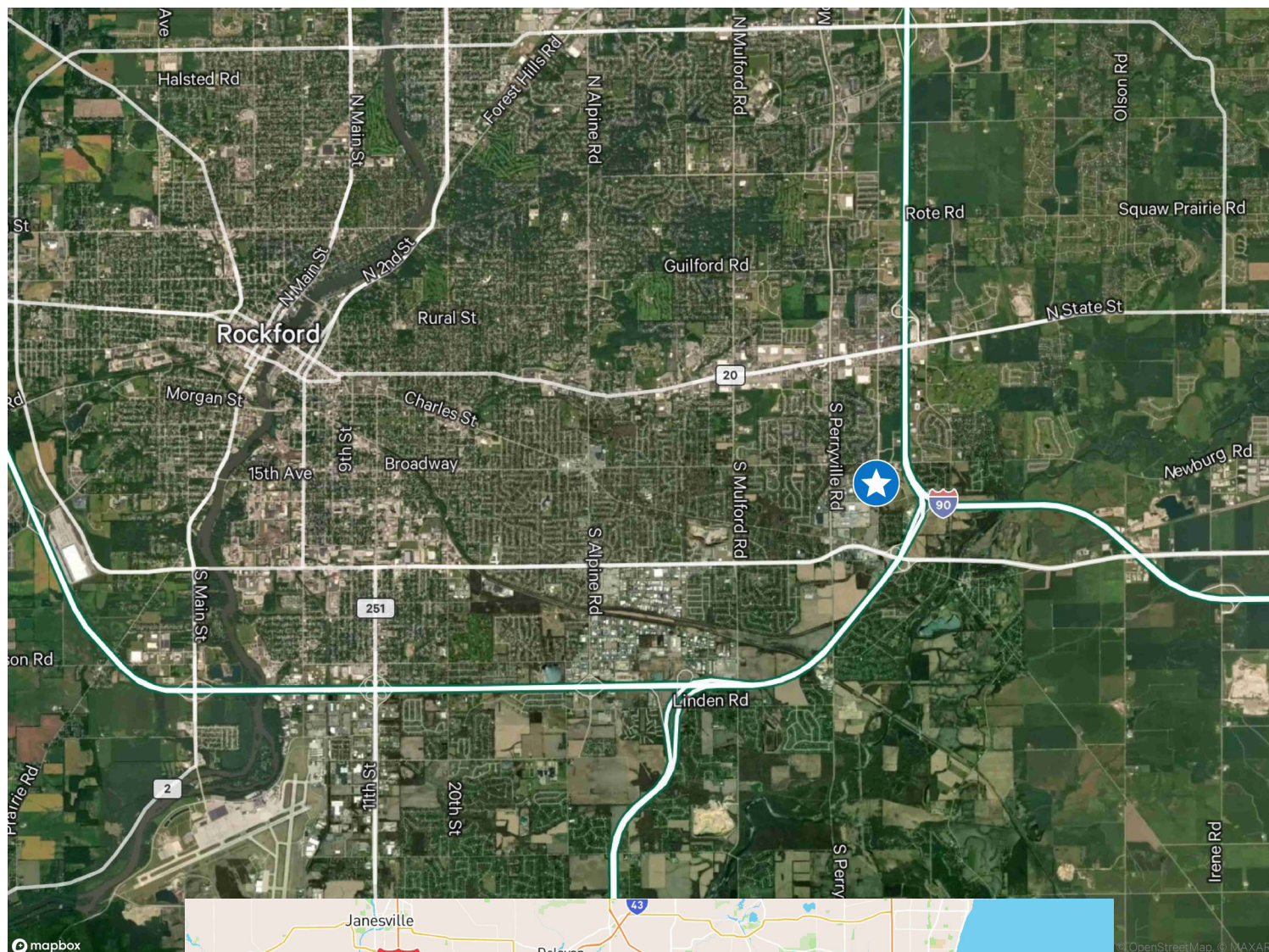
DEMOGRAPHICS	1 MILE	3 MILE	5 MILE
Population	3,654	31,711	93,356
Households	1,588	13,633	39,638
Average Household Income	\$103,265	\$98,571	\$94,620
Daytime Population	5,888	43,518	98,093









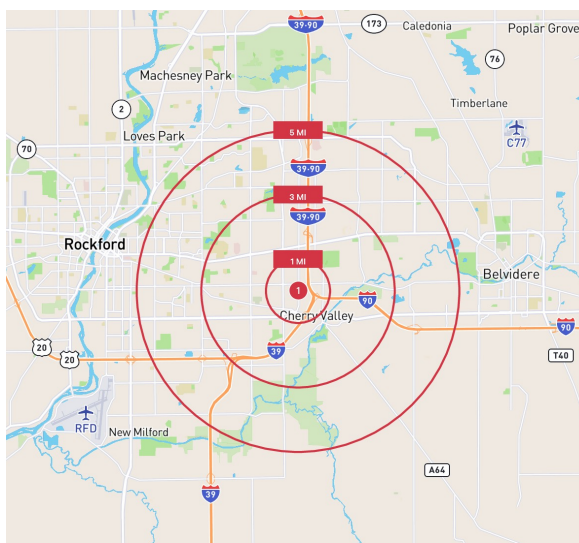
Land

1650 Temple Ln., Cherry Valley, IL

BTS Lease



 POPULATION	1 MILE	3 MILES	5 MILES
2024 Population - Current Year Estimate	3,594	31,711	93,137
2029 Population - Five Year Projection	3,514	30,981	91,058
2020 Population - Census	3,688	32,491	96,122
2010 Population - Census	3,735	32,147	94,907
2020-2024 Annual Population Growth Rate	-0.49%	-0.46%	-0.60%
2024-2029 Annual Population Growth Rate	-0.45%	-0.46%	-0.45%
 HOUSEHOLDS			
2024 Households - Current Year Estimate	1,558	13,633	39,547
2029 Households - Five Year Projection	1,565	13,641	39,547
2020 Households - Census	1,532	13,538	39,350
2010 Households - Census	1,544	13,195	38,676
2020-2024 Compound Annual Household Growth Rate	0.32%	0.13%	0.10%
2024-2029 Annual Household Growth Rate	0.09%	0.01%	0.00%
2024 Average Household Size	2.20	2.25	2.32
 HOUSEHOLD INCOME			
2024 Average Household Income	\$103,036	\$98,571	\$94,567
2029 Average Household Income	\$113,474	\$106,702	\$102,359
2024 Median Household Income	\$78,412	\$75,561	\$71,791
2029 Median Household Income	\$85,420	\$81,103	\$77,376
2024 Per Capita Income	\$45,061	\$42,585	\$40,208
2029 Per Capita Income	\$50,940	\$47,195	\$44,510
 HOUSING UNITS			
2024 Housing Units	1,641	14,439	41,962
2024 Vacant Housing Units	83 5.1%	806 5.6%	2,415 5.8%
2024 Occupied Housing Units	1,558 94.9%	13,633 94.4%	39,547 94.2%
2024 Owner Occupied Housing Units	1,245 75.9%	9,593 66.4%	27,222 64.9%
2024 Renter Occupied Housing Units	313 19.1%	4,040 28.0%	12,325 29.4%
 EDUCATION			
2024 Population 25 and Over	2,853	23,385	65,972
HS and Associates Degrees	1,811 63.5%	13,443 57.5%	38,140 57.8%
Bachelor's Degree or Higher	901 31.6%	8,145 34.8%	21,790 33.0%
 PLACE OF WORK			
2024 Businesses	275	1,892	3,630
2024 Employees	4,306	28,370	54,899



Contact

Karen Walsh
Senior Vice President
815 218 3438
karen.walsh@cbre.com