

# 7275

**GOODLETT FARMS  
PARKWAY**

**MalmoMemphis**  
REAL ESTATE, INC.

**For Lease or Sale**



# PROPERTY DETAILS

## 7275 GOODLETT FARMS PARKWAY

- 50,504 SF one-story office building that includes a 5,842 SF specialized lab located on 5 acres
- Overhead drive-in door at rear of property
- Skylights and natural lighting, perfect for open floorplans
- Owner contributions and aggressive lease rates
- A variety of industry clusters have evolved within the corridor, including medical device manufacturing, pharmaceuticals, healthcare, hospitality, agribusiness/food processing, IT service, and general electronics.

Smith+Nephew

 bioventus®  
Active Healing Through Orthobiologics



  
STRATAS  
FOODS



shelbysystems

 REGIONS

 Aerotek Actalent



  
Yusen Logistics

# 7275 GOODLETT FARMS PARKWAY

## Possible HQ



Well-positioned to attract tenants seeking a local, regional or international headquarters facility with an option for their own custom build out with generous owner contributions.

## Location

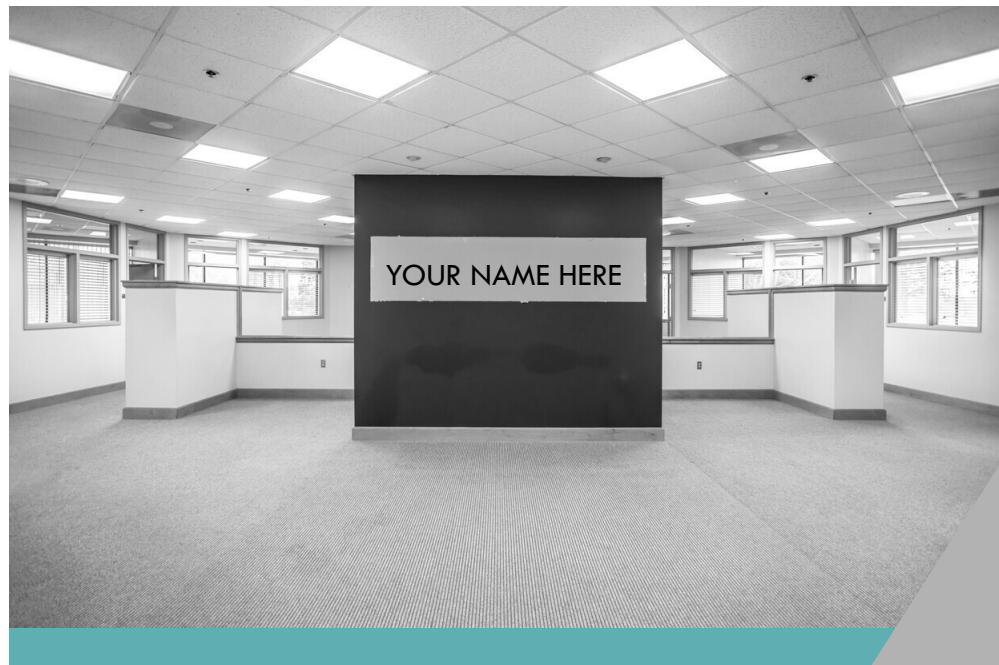
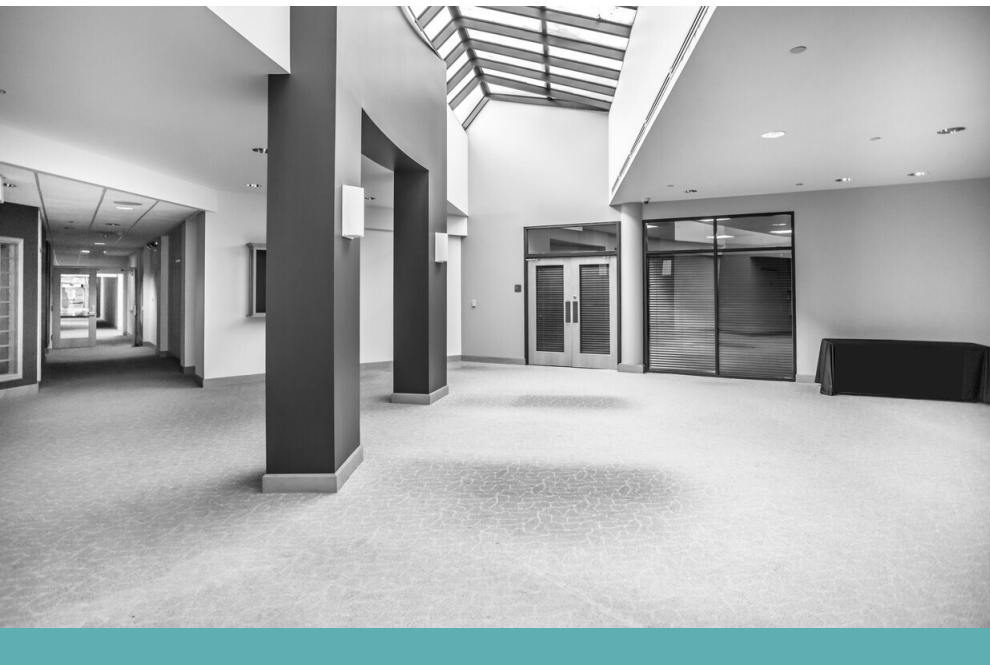
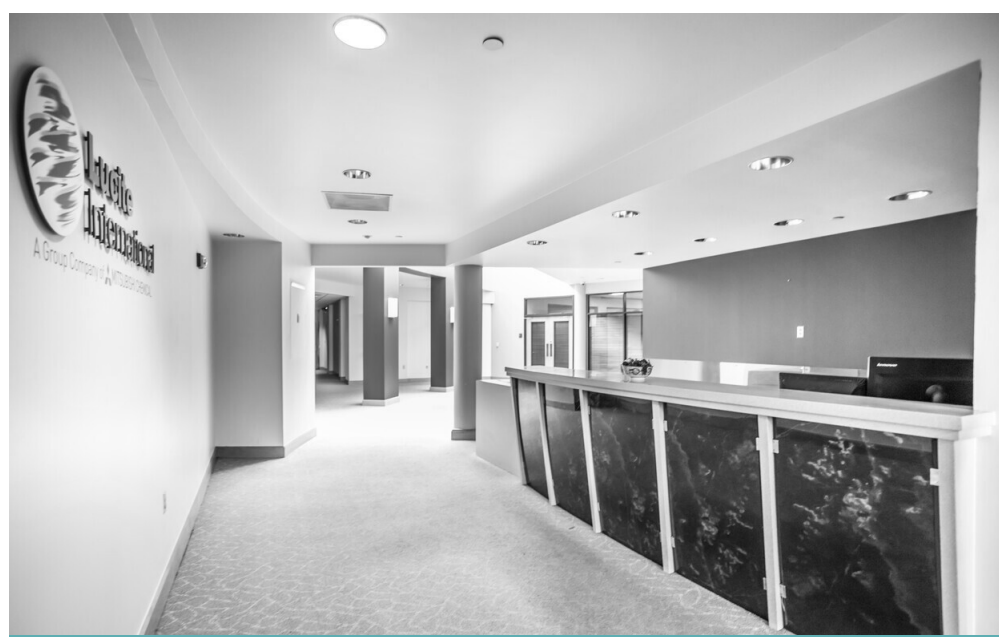
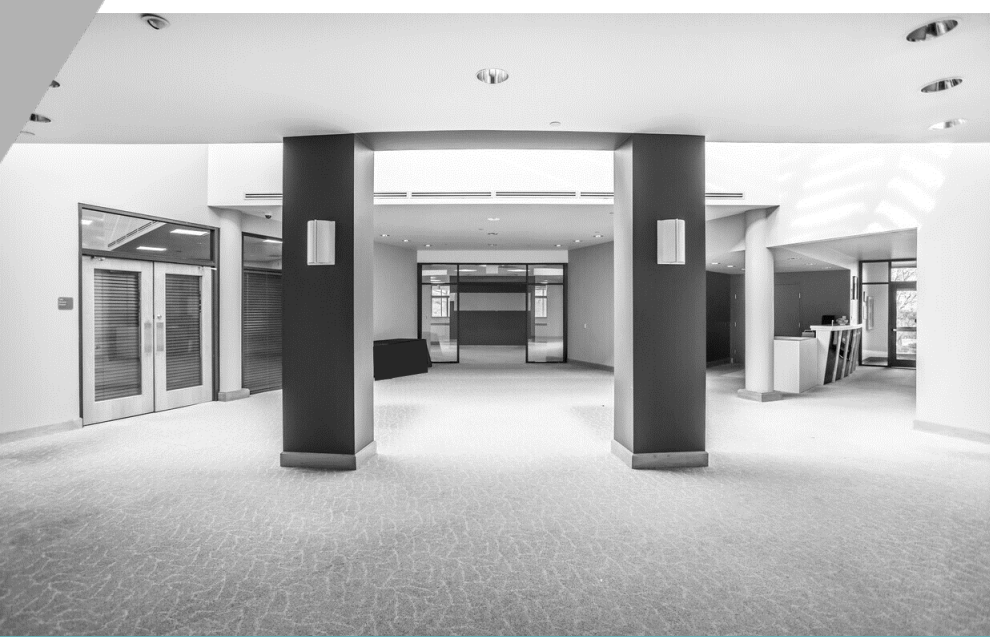


This property sits on just over 5 acres along the Goodlett Farms business corridor which is a one-and-a-half-mile span of scenic parkway. Home to many single-tenant occupancy users. Direct access to prominent I-40 and minutes away from I-240, I-55 & new I-269. Just 45 miles from Blue Oval City, the planned automotive assembly complex that will be operated by Ford Motor Company.

## Demographics



The 5-mile radius consists of a population of more than 170,000 and a median income of  $\pm$  \$66,000. The Property is just a 5-minute drive from more than 300 restaurants and retail centers that include Target, Best Buy, Walmart, Sam's Club, Costco, the Wolfchase Galleria and many other major retailers.





5,842 SF SPECIALTY LAB AND  
FLEXIBLE ZONING FOR  
CUSTOMIZABLE USE

OVERHEAD DRIVE-IN DOOR  
WITH FUTURE DOCK DOOR  
EXPANSION IF NEEDED





Dede Malmo, CCIM

(901) 230-5549

[dmalmo@malmomemphis.com](mailto:dmalmo@malmomemphis.com)

Ashley Krauch

(901) 537-7447

[akrauch@malmomemphis.com](mailto:akrauch@malmomemphis.com)

**MalmoMemphis**  
REAL ESTATE, INC.