



available

## pawleys island plaza

10225 ocean highway north | pawleys island, sc 29585

cre.

### shop space opportunities

- Publix-anchored neighborhood shopping center located in the Pawleys Island submarket of Georgetown County
- Shop space opportunities available ranging from 1,289 sf - 4,100 sf
- Located at the signalized intersection of US Highway 17 (Ocean Highway) and Pettrigru Drive with multiple points of ingress/egress and ample parking
- Join best-in-class national retailers including T.J. Maxx, Ulta Beauty, Petco, Rack Room Shoes, Jersey Mike's, and Smoothie King. Aldi coming soon next door!
- Surrounded by an affluent population with an average household income of \$100K+ within 3-miles. Pawleys Island is a popular vacation destination with more than 1 million visitors annually

### nearby retailers

Publix. ULTA<sup>®</sup> BEAUTY

T.J. maxx petco

RACK  
ROOM  
SHOES



carolina  
retail  
experts concept to  
community

Lindsey Halter, CCIM  
864 270 2089  
lindsey@cre.expert

Taylor Boyd  
854 842 9842  
taylor@cre.expert

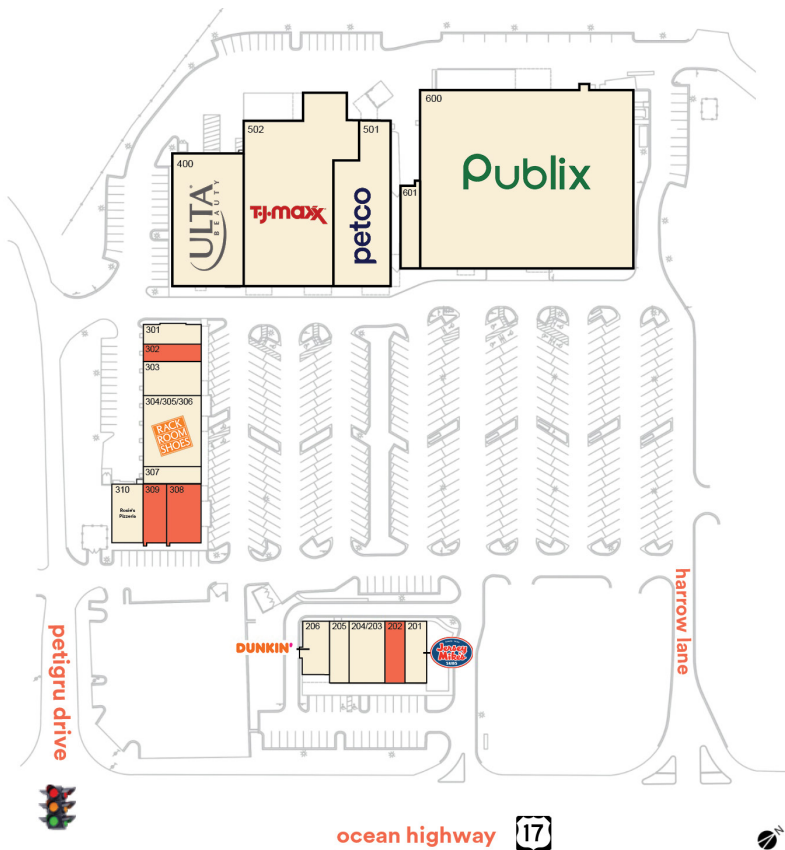
463 king street suite b. charleston, sc 29403 | cre.expert

### traffic counts

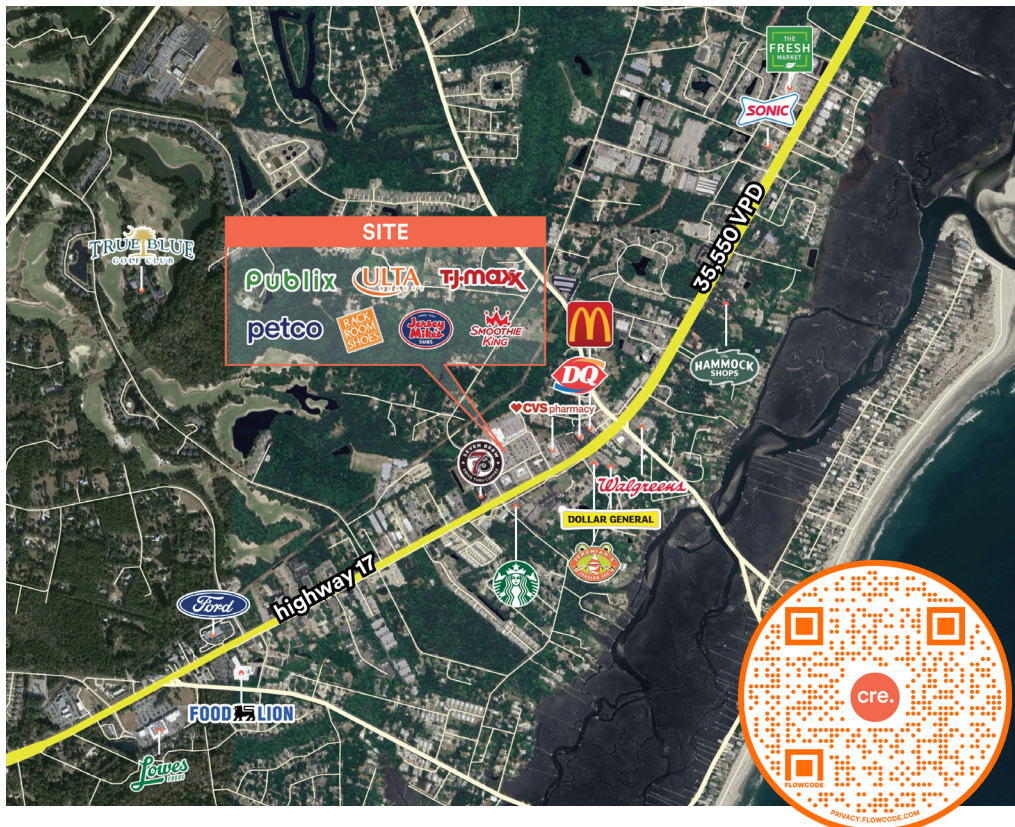
35,550 VPD | Highway 17

Source: Placer.ai 2025





unit	size
unit 201	Jersey Mike's Subs
<b>unit 202</b>	<b>1,600 sf</b>
unit 203/204	Premier Smile & Implant Center
unit 205	J. McLaughlin
unit 206	Dunkin'
unit 301	Nail Pro
<b>unit 302</b>	<b>1,289 sf</b>
unit 303	Chicora Hair
unit 304/305/306	Rack Room Shoes
unit 307	Coin Laundry
<b>unit 308</b>	<b>2,600 sf</b>
<b>unit 309</b>	<b>1,500 sf</b>
unit 310	Rosie's Pizzeria
unit 400	Ulta Beauty
unit 501	Petco
unit 502	T.J. Maxx
unit 600	Publix
unit 601	Smoothie King



### 7 minutes

	6,239 2025 Population
	6,372 2030 Population
	\$77,603 Median Household Income
	55.8 Median Age

### 10 minutes

	13,813 2023 Population
	14,053 2030 Population
	\$81,261 Median Household Income
	59.8 Median Age

Source: ESRI 2025

**carolina  
retail  
experts**  
concept to  
community

**Lindsey Halter, CCIM**  
📞 864 270 2089  
✉️ lindsey@cre.expert

**Taylor Boyd**  
📞 854 842 9842  
✉️ taylor@cre.expert

We obtained the information above from sources we believe to be reliable. However, we have not verified its accuracy and make no guarantee, warranty or representation about it. It is submitted subject to the possibility of errors, omissions, change of price, rental or other conditions, prior sale, lease or financing, or withdrawal without notice. We include projections, opinions, assumptions or estimates for example only, and they may not represent current or future performance of the property. You and your tax and legal advisors should conduct your own investigation of the property and transaction.