

CROWN HEIGHTS, BROOKLYN, NY

785 FRANKLIN AVENUE



SPACE DETAILS

LOCATION

Between St Marks Avenue and Prospect Place

SPACE

Ground Floor: 1,200 SF

POSSESSION

Immediate

ASKING RENT

\$7,500 Per Month

NEIGHBORS

Chavela's, Mayfield, Barboncino Pizza, Franklin Park, Dutch Boy Burger, Gloria's Caribbean Cuisine

TRANSPORTATION



COMMENTS

- Prime Franklin Ave corridor with strong dining and nightlife presence
- High foot traffic with vibrant mix of residential and retail
- Surrounded by well-known restaurants and local hotspots
- Close to Prospect Park and Brooklyn Botanic Garden
- Excellent subway access with multiple lines nearby

CONTACTS

MEYER DAGMY

718-249-3613

m@modcre.com

EDDIE MAMIYE

917-379-6719

e@modcre.com

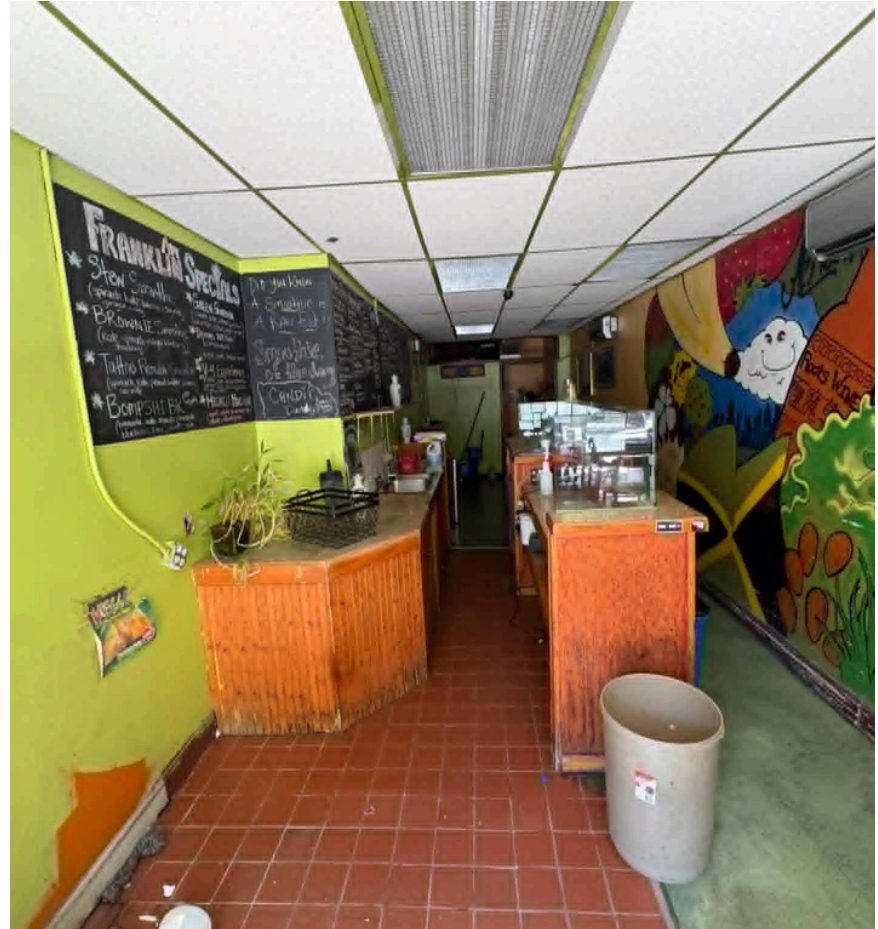
JACK DAGMY

718-249-3614

j@modcre.com



INTERIOR IMAGES



CONTACTS

MEYER DAGMY

718-249-3613

m@modcre.com

EDDIE MAMIYE

917-379-6719

e@modcre.com

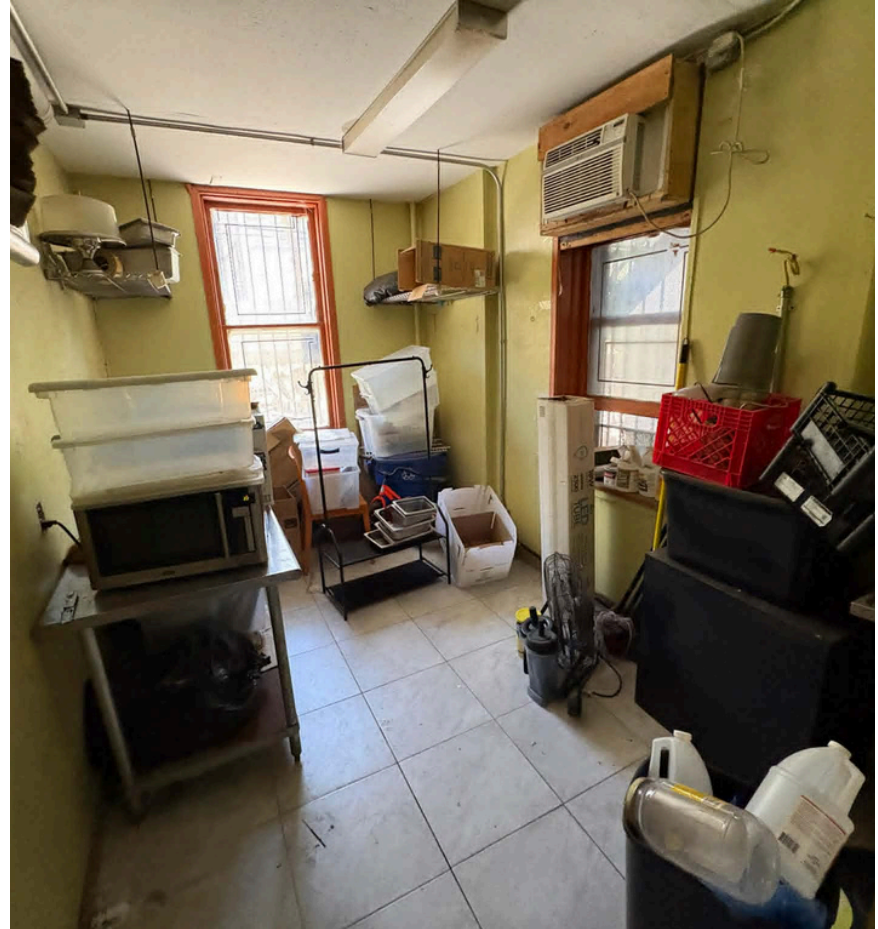
JACK DAGMY

718-249-3614

j@modcre.com



INTERIOR IMAGES



CONTACTS

MEYER DAGMY

718-249-3613

m@modcre.com

EDDIE MAMIYE

917-379-6719

e@modcre.com

JACK DAGMY

718-249-3614

j@modcre.com



INTERIOR IMAGES



CONTACTS

MEYER DAGMY

718-249-3613

m@modcre.com

EDDIE MAMIYE

917-379-6719

e@modcre.com

JACK DAGMY

718-249-3614

j@modcre.com



AREA MAP



CONTACTS

MEYER DAGMY

718-249-3613
m@modcre.com

EDDIE MAMIYE

917-379-6719
e@modcre.com

JACK DAGMY

718-249-3614
j@modcre.com

