



# 4732 STONE DRIVE

TUCKER, GA  
30084

**For Lease**  
**9,558± SF to 19,602± SF**  
**Warehouse Space**

**BRIAN BRATTON, SIOR**  
*Senior Vice President*  
404.942.2028  
bbratton@kingindustrial.com

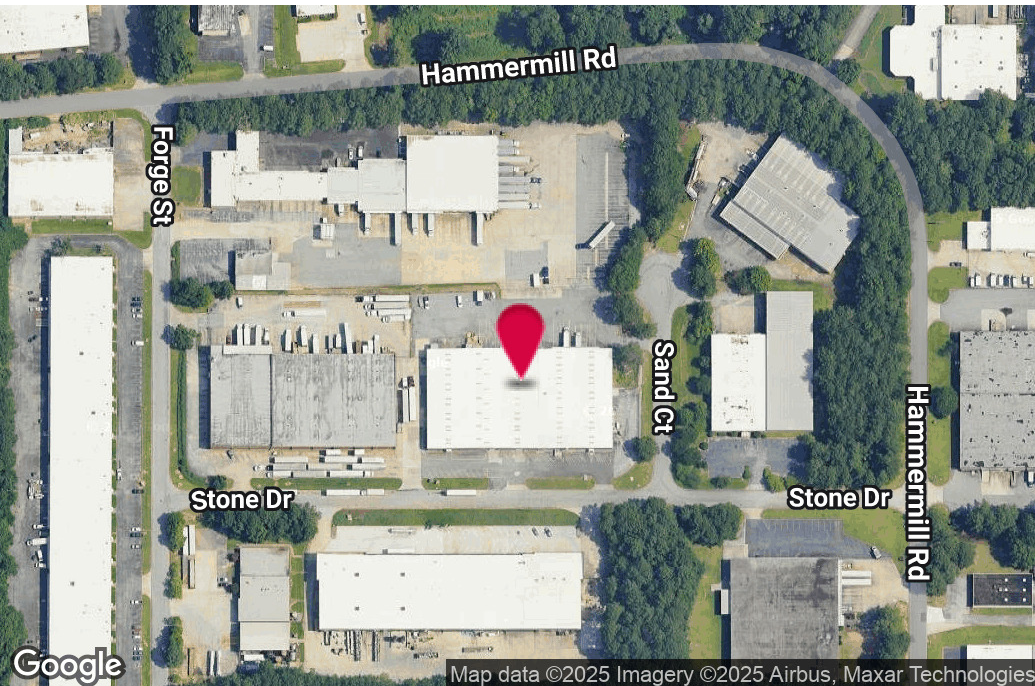
**STEVE RATCHFORD, SIOR, CCIM**  
*Senior Vice President*  
404.942.2003  
sratchford@kingindustrial.com

**king** *Industrial  
Realty, Inc.*

Industrial • Commercial • Investment  
404.942.2000 | [kingindustrial.com](http://kingindustrial.com)



FOR LEASE  
9,558± SF TO  
19,602± SF



## PROPERTY HIGHLIGHTS

- **Ste 300:** 9,558+/- SF, 2 Dock Doors & 1 Drive-In Door
- **Ste 400:** 10,044+/- SF, 2 Dock Doors & 1 Drive-In Door
- 18' - 22' Clear Height
- Sprinklered
- 600 Amp / 480 Volt Power
- 161' Building Depth
- 41' x 34' Column Spacing

## OFFERING SUMMARY

Lot Size:	2.66 Acres
Zoning:	M-1

### BRIAN BRATTON, SIOR

Senior Vice President

404.942.2028

bbratton@kingindustrial.com

### STEVE RATCHFORD, SIOR, CCIM

Senior Vice President

404.942.2003

sratchford@kingindustrial.com

Every effort has been made to provide accurate information, but no liability is assumed for errors or omissions.



Industrial • Commercial • Investment  
404.942.2000 | kingindustrial.com



# WAREHOUSE PHOTOS



**BRIAN BRATTON, SIOR**

Senior Vice President

404.942.2028

bbratton@kingindustrial.com

**STEVE RATCHFORD, SIOR, CCIM**

Senior Vice President

404.942.2003

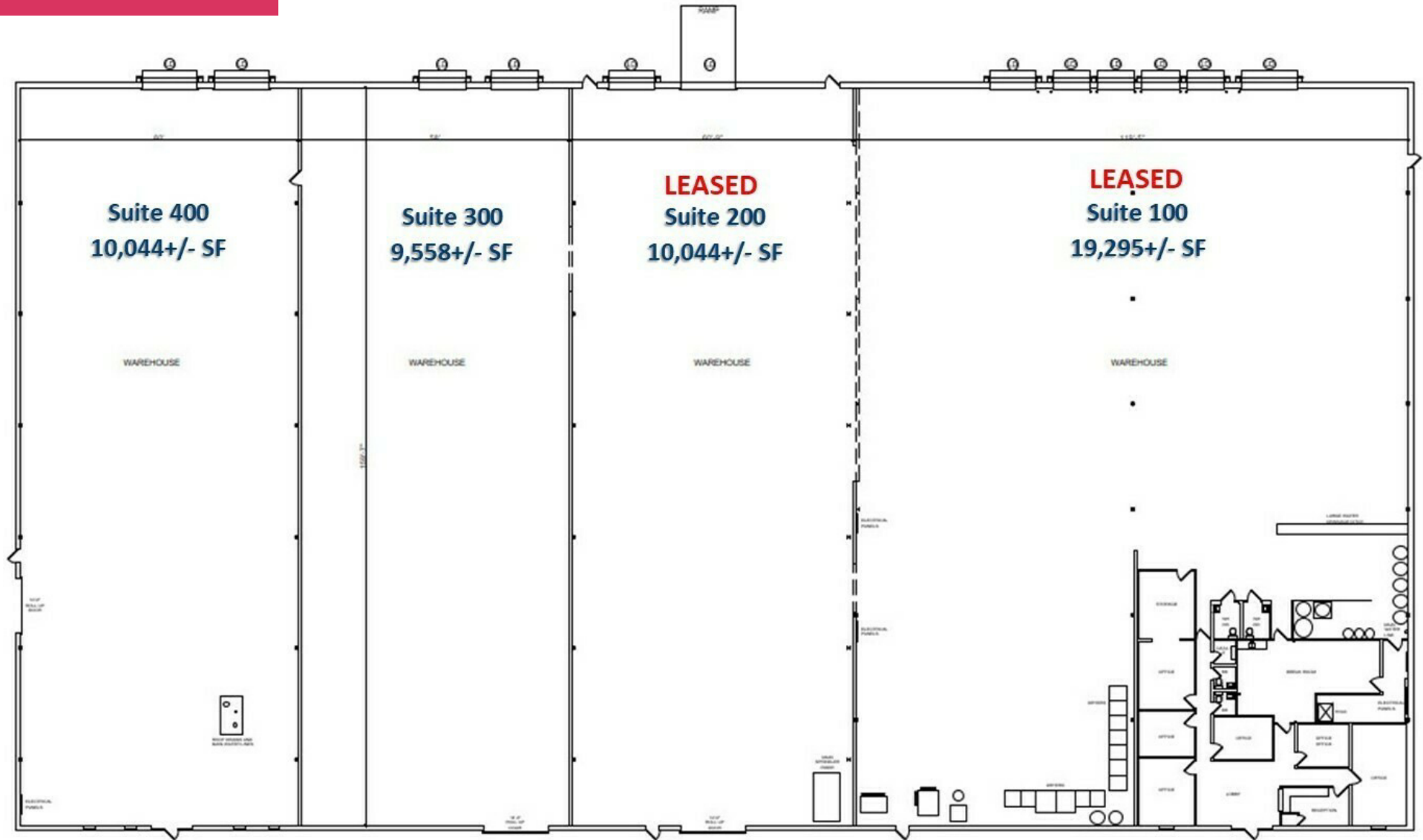
sratchford@kingindustrial.com

**king** Industrial  
Realty, Inc.

**CORFAC**  
INTERNATIONAL

Industrial • Commercial • Investment  
404.942.2000 | kingindustrial.com

# FLOOR PLAN



**BRIAN BRATTON, SIOR**

Senior Vice President

404.942.2028

bbratton@kingindustrial.com

**STEVE RATCHFORD, SIOR, CCIM**

Senior Vice President

404.942.2003

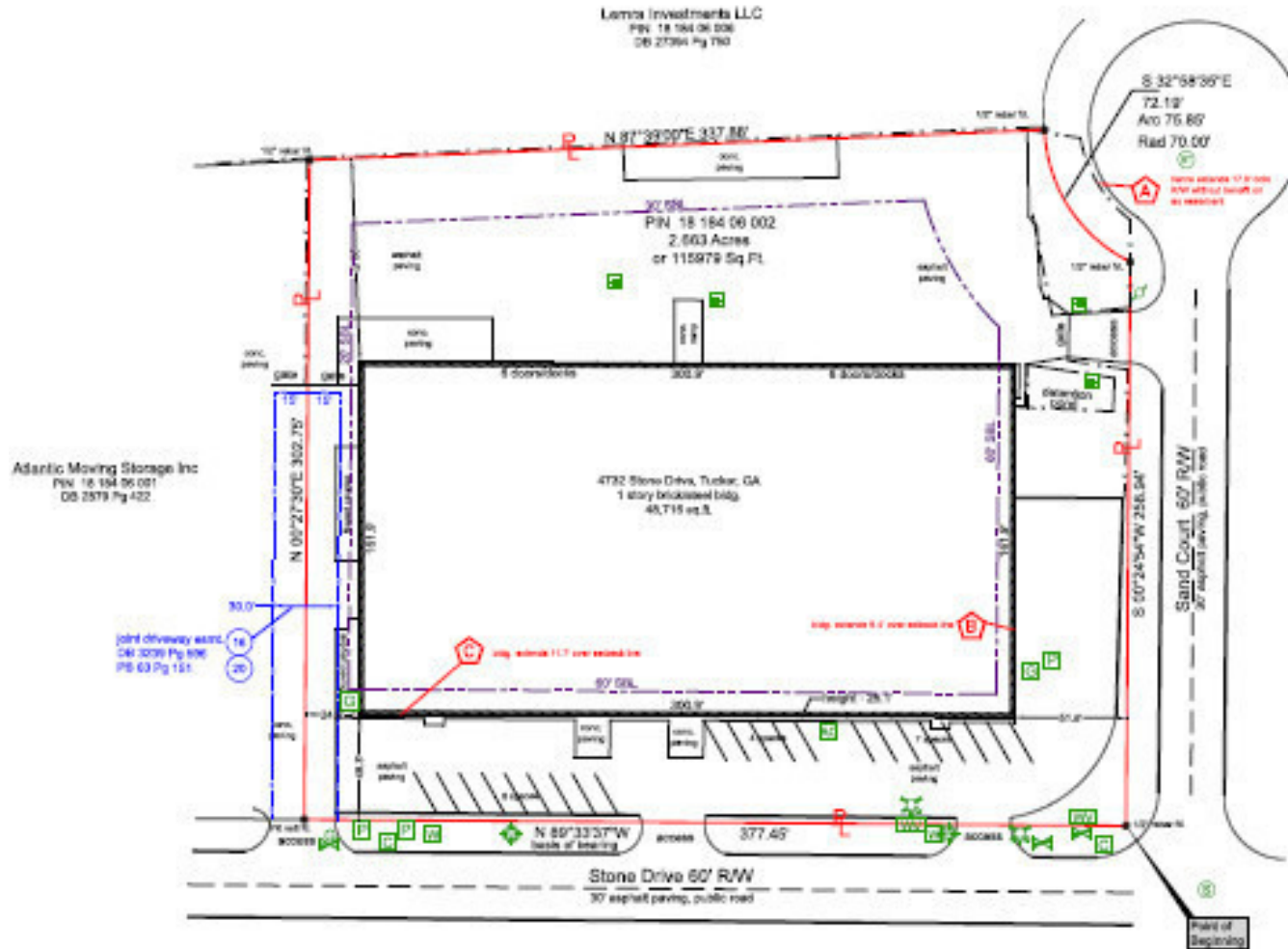
sratchford@kingindustrial.com

**king** Industrial  
Realty, Inc. **CORFAC**  
INTERNATIONAL

Industrial • Commercial • Investment  
404.942.2000 | kingindustrial.com



# SURVEY



**BRIAN BRATTON, SIOR**

*Senior Vice President*

404.942.2028

bbratton@kingindustrial.com

**STEVE RATCHFORD, SIOR, CCIM**

*Senior Vice President*

404.942.2003

sratchford@kingindustrial.com



**King** Industrial Realty, Inc.

**CORFAC**  
INTERNATIONAL

Industrial • Commercial • Investment

404.942.2000 | [kingindustrial.com](http://kingindustrial.com)



A Google Map of the Atlanta, Georgia area. The map shows major highways (Interstates 75, 85, 20, 285, 78, 41, 19, 23, 140, 124, 29, 154, 675) and surrounding cities (Marietta, Atlanta, Decatur, Lithonia, Conyers, Oxford, Auburn, Dacula, Lawrenceville, Grayson, Snellville, Loganville, Between, Walnut Grove, Jersey, Conyers, Oxford, Forest Park, College Park, East Point, South Fulton, Mableton, Vinings, Smyrna, Dunwoody, Sandy Springs, Brookhaven, Tucker, Clarkston, Stone Mountain, Decatur, Norcross, Johns Creek, Duluth, Suwanee, Alpharetta, Roswell, East Cobb, Marietta, Mableton, Vinings, Smyrna, Dunwoody, Sandy Springs, Brookhaven, Tucker, Clarkston, Stone Mountain, Decatur, Norcross, Johns Creek, Duluth, Suwanee, Alpharetta, Roswell, East Cobb, Marietta). A red pin is located near Tucker, Georgia. The Google logo is in the bottom left corner, and a compass rose is in the bottom right corner. The text "Map data ©2025 Google" is visible in the bottom right corner.

404.942.2000 | [kingindustrial.com](http://kingindustrial.com)

*Every effort has been made to provide accurate information, but no liability is assumed for errors or omissions.*





EXCLUSIVELY LISTED BY:

**BRIAN BRATTON, SIOR**

*Senior Vice President*  
bbratton@kingindustrial.com  
404.942.2028

**STEVE RATCHFORD, SIOR, CCIM**

*Senior Vice President*  
sratchford@kingindustrial.com  
404.942.2003

**King** Industrial  
Realty, Inc.

Industrial • Commercial • Investment  
404.942.2000 | kingindustrial.com